

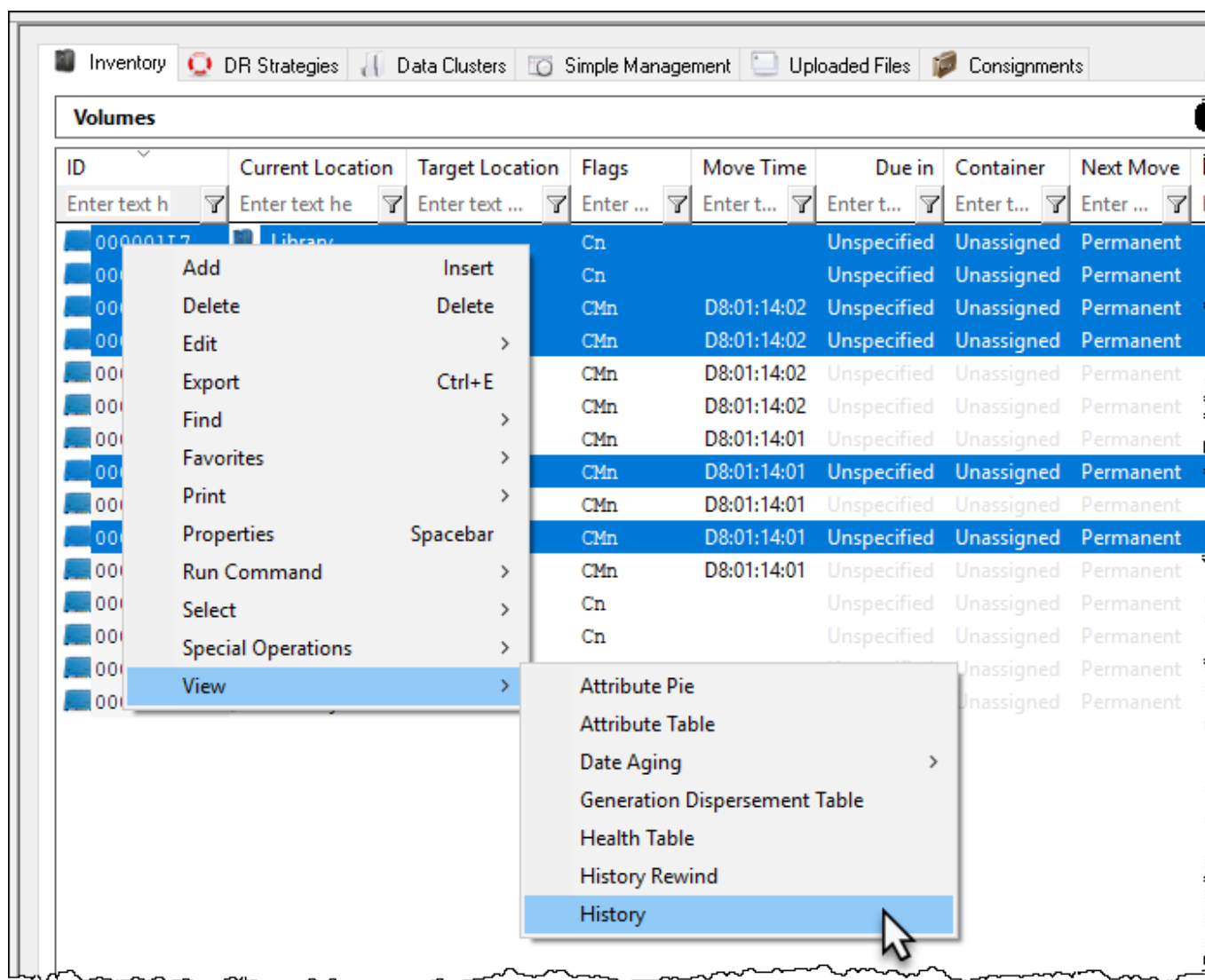
Volume History Table

The Volume History Table displays in a table format. Volumes are displayed in ID order by default.

Selecting Volumes for Display

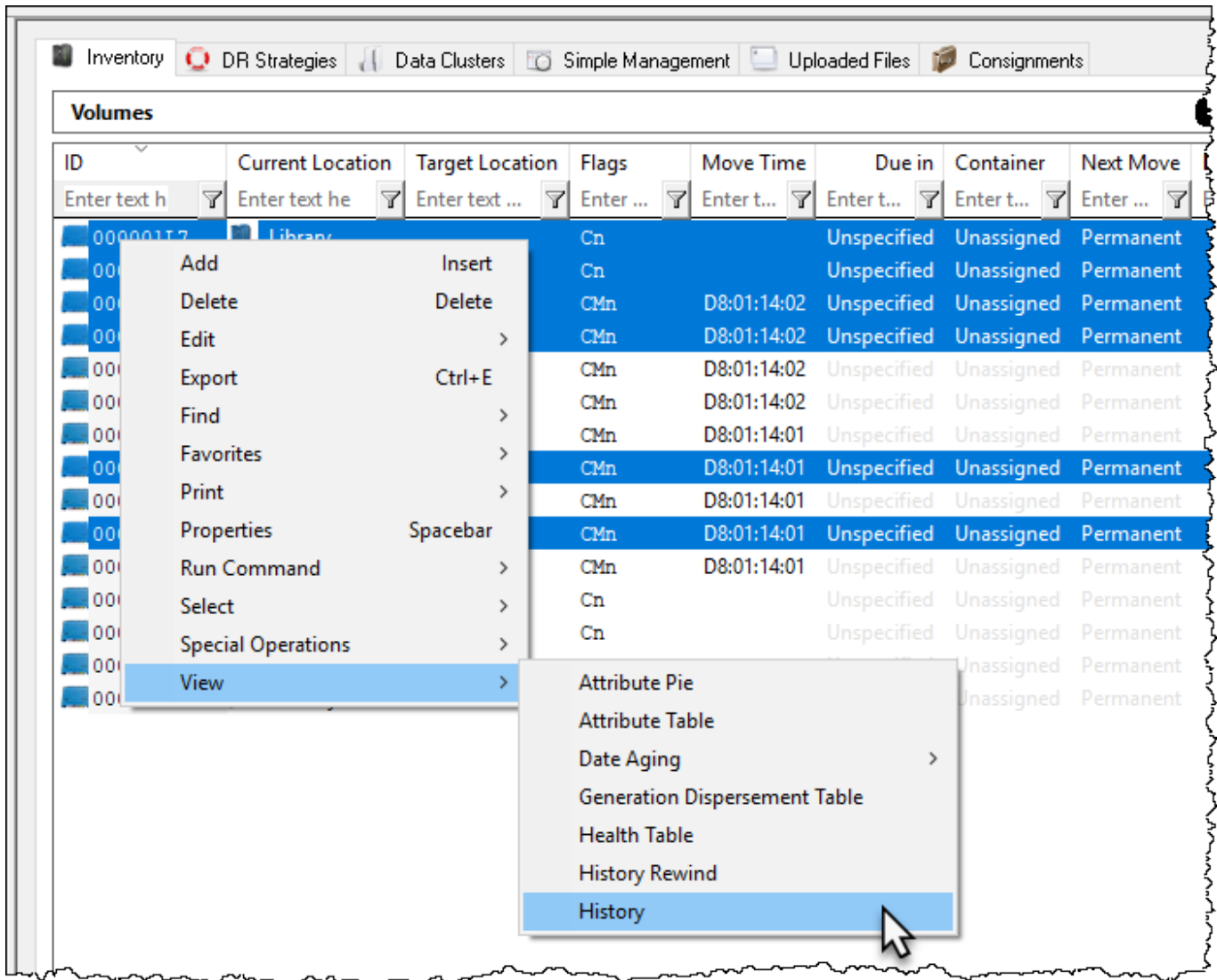
Select all volumes by right-clicking in the inventory window and select **Select→All**, or using **shift+click** and/or **control+click** select the range of tapes required.

Right click the selected volumes and click **View→History**.



Displayed data can be filtered by using the TapeTrack [String Filters](#)

History Report



Exporting Results

To export data, highlight required volumes, right-click and select Export (or press Ctrl+ E) to open **Export Type Selection**.

Select [output format](#) using the radio buttons, set checkbox Open file when export is complete and click OK.

Click the X in the top right of the window to close.

From: <https://rtfm.tapetrack.com/> - **TapeTrack Documentation**

Permanent link: <https://rtfm.tapetrack.com/master/view/history?rev=1592356242>

Last update: **2025/01/21 22:07**

