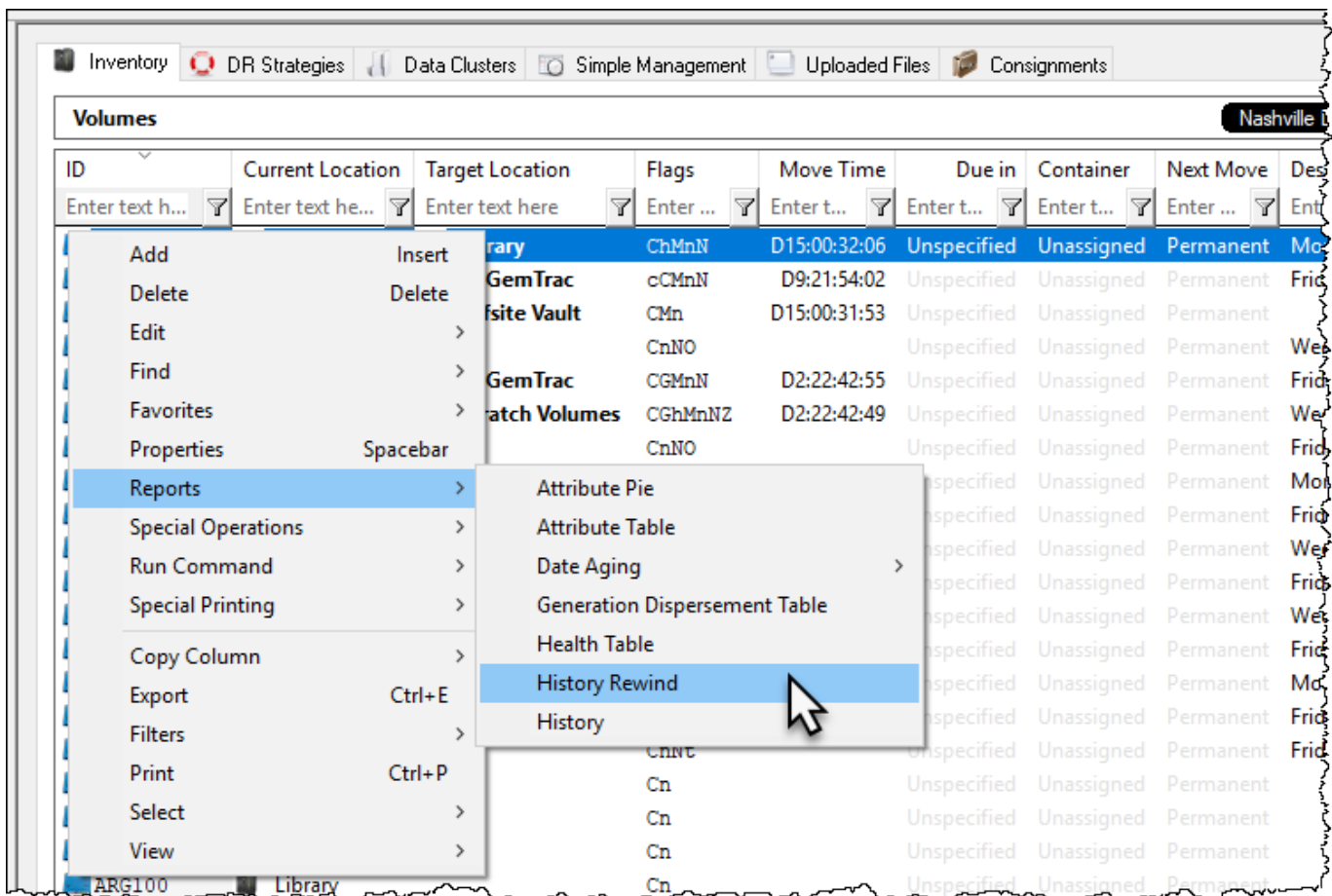


# History Rewind

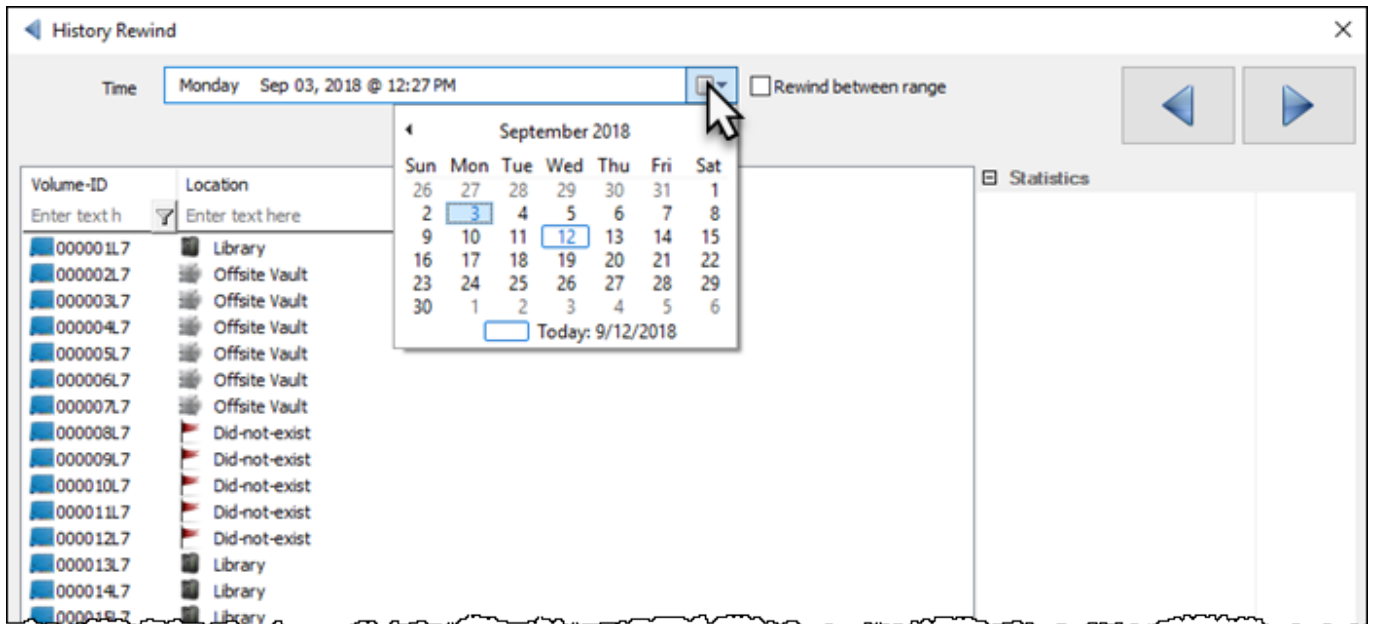
History rewind function allows you to view your inventory of volumes based on a selected date, or differences in inventory between selected dates.

## History Rewind On A Selected Date

Right-click in the inventory window and select View → History Rewind



From the **History Rewind** window click the calendar icon in the drop-down list to select the required date.

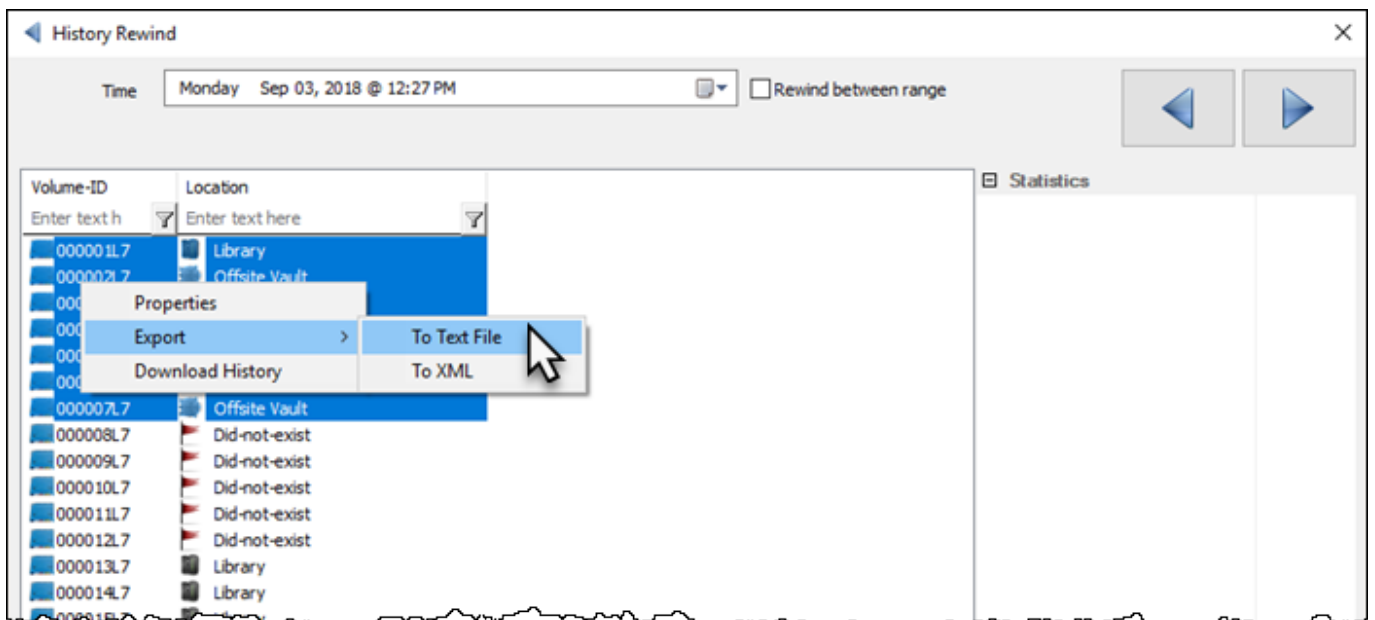


Volumes will be displayed, in volume-ID order by default, showing location on the selected date. Volumes that were not part of the inventory at that date, but are currently, will be displayed as **Did not exist** with a red flag icon.

The selected date may be changed by either selecting another date from the drop-down list or by scrolling, forwards or backwards, with the arrow buttons at the top right of the window.

Results can be [filtered](#) on each/all columns.

Volumes within the list can then be exported to file by selecting the required volumes from the list and then right-clicking and selecting Export → and then choosing file type.

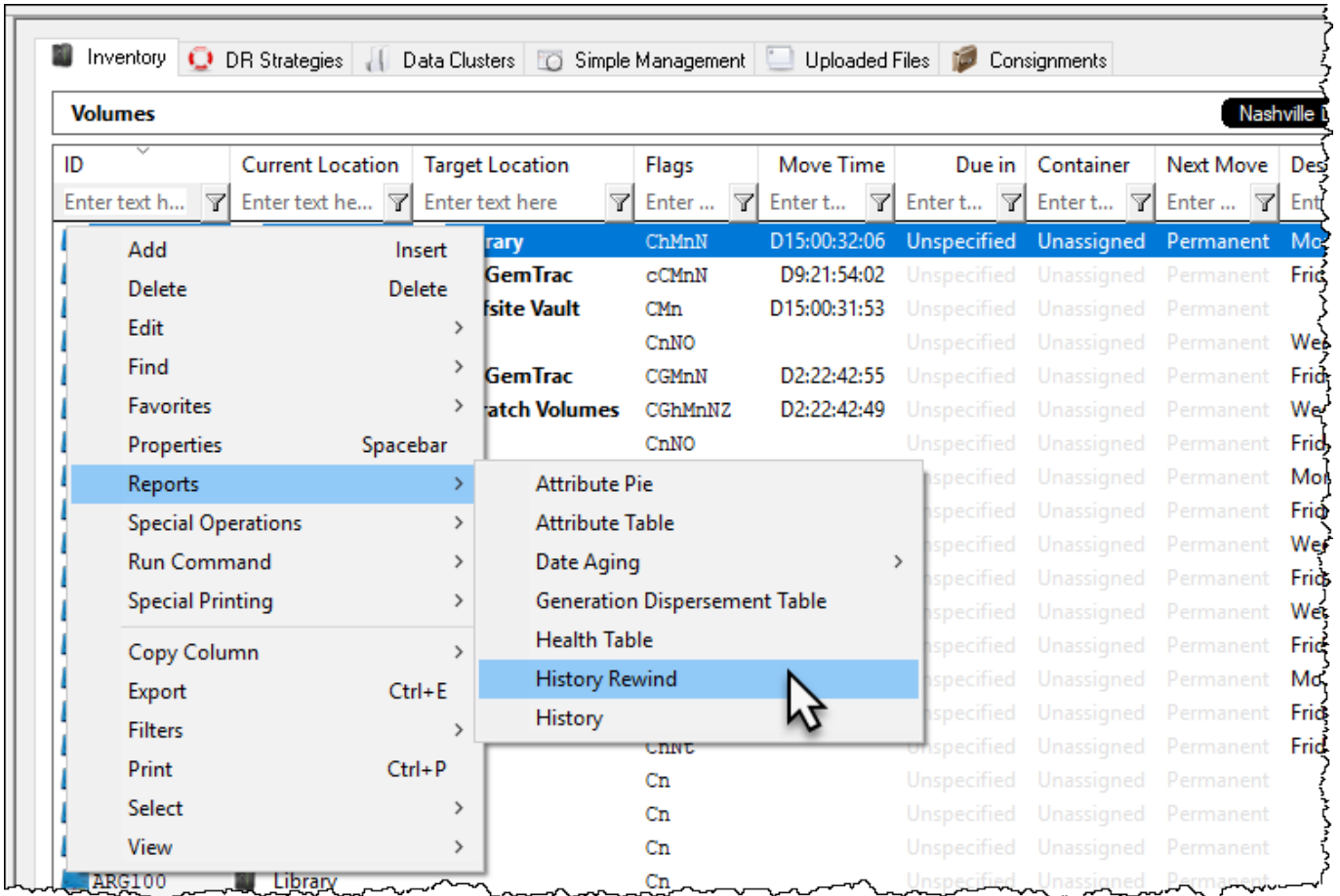


Other right-click options include

- Properties - Opens up the volume's properties window. If more than one volume is selected the properties windows will be opened sequentially, each one after the current window is closed.
- Download History - Downloads the history records of the volumes selected into a reference table.

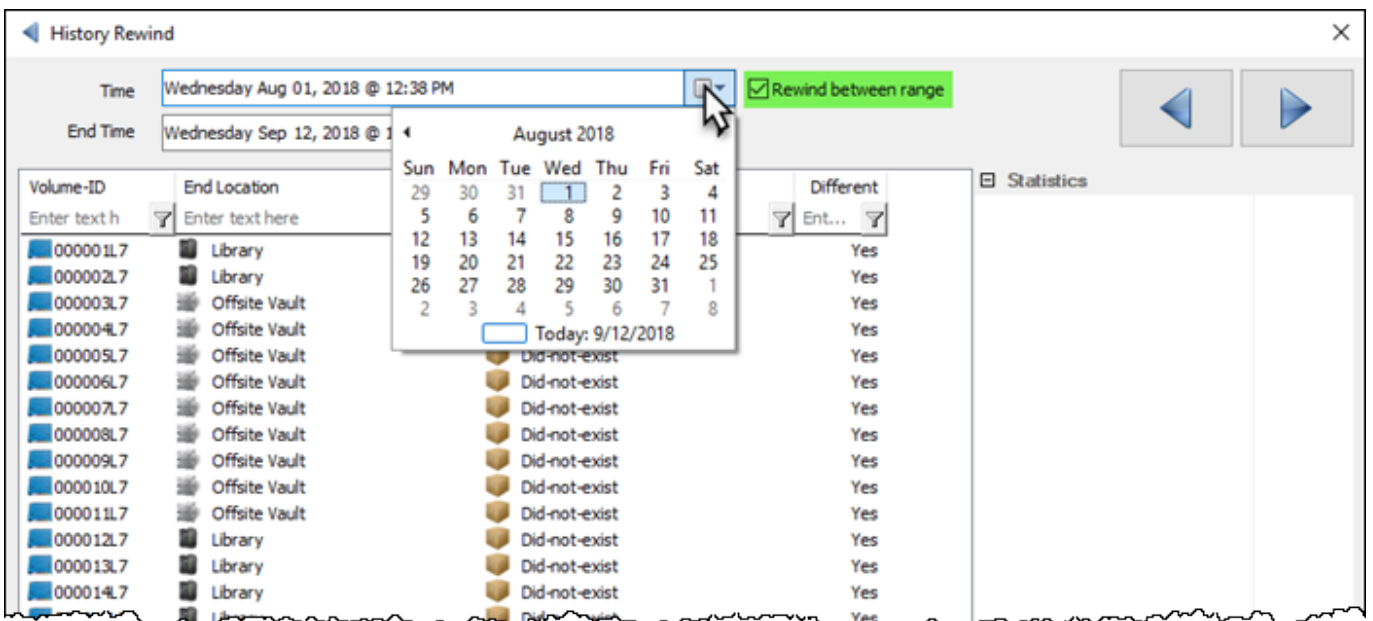
# History Rewind Between A Range Of Dates

Right-click in the inventory window and select View → History Rewind



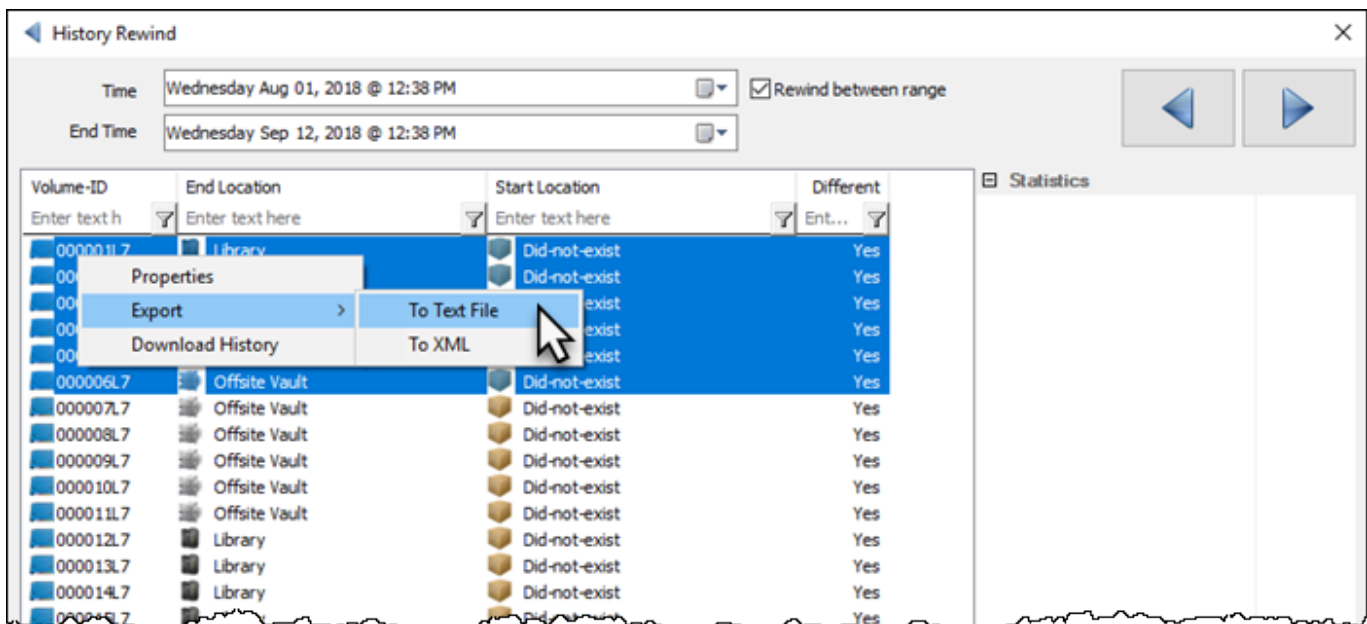
To the right of the drop-down list, check the box **Rewind Between Range** to display a second date drop-down list.

Select start date and end date to display volume-ID's, start and end location and whether there is a difference between the two.



Results can be **filtered** of each/all columns, for example placing **Yes** in the difference column will filter results to only those volumes that are in a different location between the selected date range.

Volumes within the list can then be exported to file by selecting the required volumes from the list and then right-clicking and selecting Export → and then choosing file type.



Other right-click options include

- Properties - Opens up the volume's properties window. If more than one volume is selected the properties windows will be opened sequentially, each one after the current window is closed.
- Download History - Downloads the history records of the volumes selected into a reference table.

From: <https://rtfm.tapetrack.com/> - **TapeTrack Documentation**

Permanent link: [https://rtfm.tapetrack.com/master/view/history\\_rewind?rev=1571072443](https://rtfm.tapetrack.com/master/view/history_rewind?rev=1571072443)

Last update: **2025/01/21 22:07**

