

Date Aging - Last Audit Fail

Displays a table and bar graph of selected **Volumes** last audit fail date.

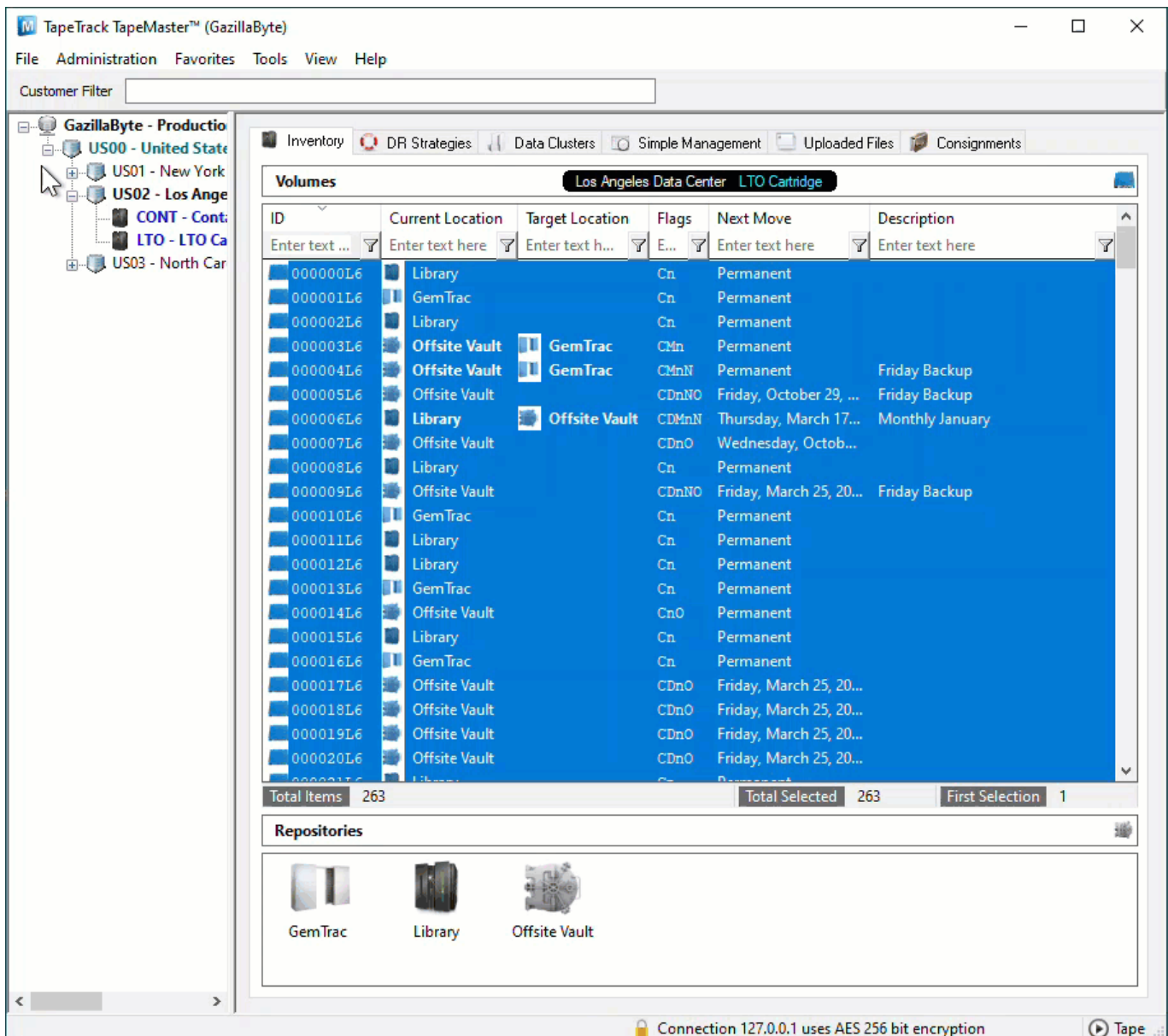
Selecting Volumes for Display

Select all **Volumes** by right-clicking in the Inventory window and select **Select→All**, or using **shift+click** and/or **control+click** select the range of **Volumes** required.

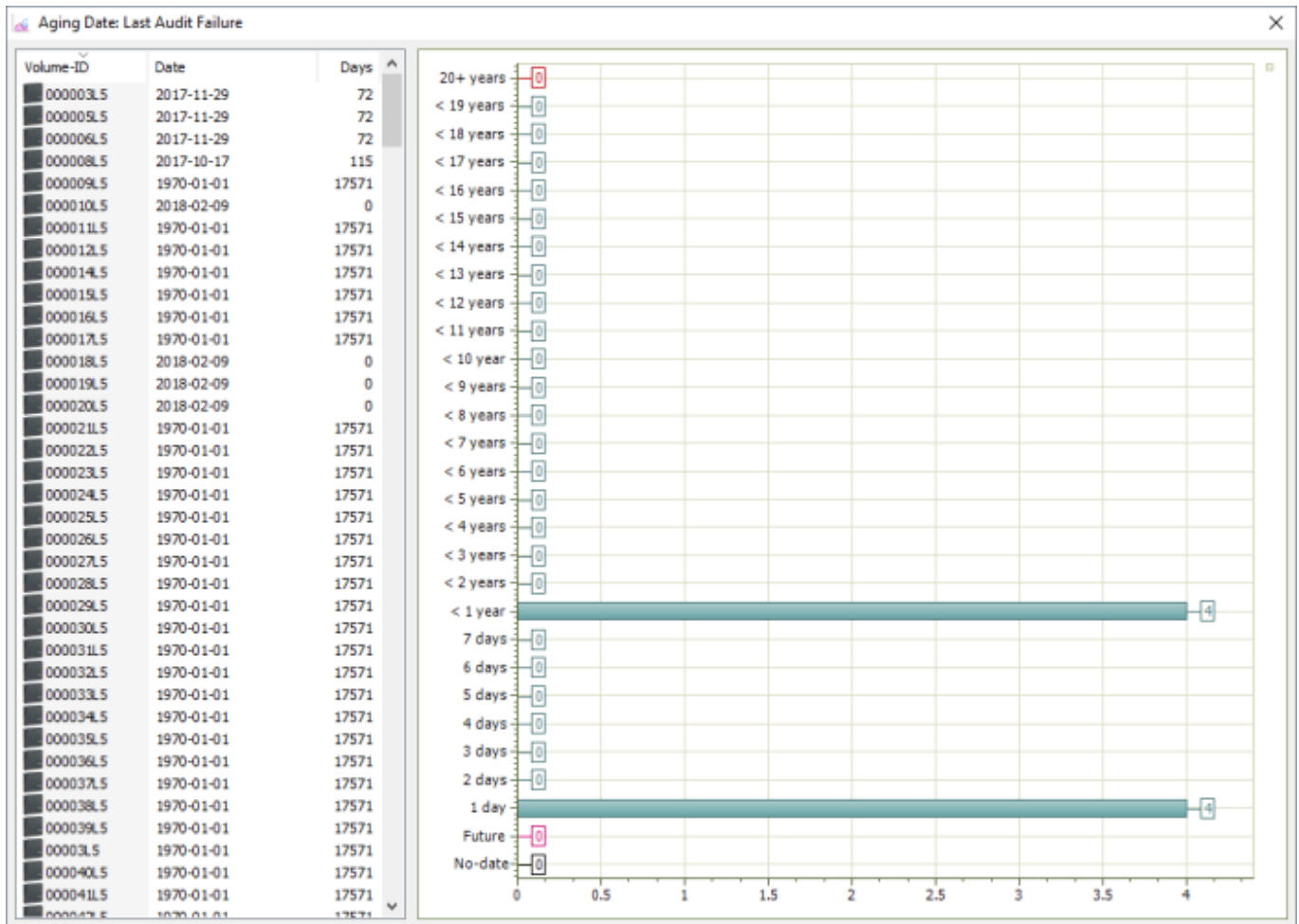


Display Next Move

Right-click the selected **Volumes** and click **Reports→Date Aging→Last Audit Failure Time**.



Volumes and associated information can be reordered by Volume-ID, Date or Days since the last fail by clicking on column headings. Clicking on the same heading will change the displayed order between ascending and descending order.



Right-Click Options

The screenshot shows the TapeTrack TapeMaster interface. On the left is a tree view of the organization structure: **GazillaByte - Production** (parent), **US00 - United State** (child), **US01 - New York** (child), **US02 - Los Ange** (child), **CONT - Cont:** (child), **LTO - LTO Ca** (child), and **US03 - North Car** (child). The main window displays a table of tape volumes for the **Los Angeles Data Center LTO Cartridge**. The table has columns for ID, Current Location, Target Location, Flags, Next Move, and Description. Below the table, it shows **Total Items: 263** and **Total Selected: 1**. At the bottom, there are icons for **GemTrac**, **Library**, and **Offsite Vault** repositories. A status bar at the bottom indicates **Connection 127.0.0.1 uses AES 256 bit encryption**.

ID	Current Location	Target Location	Flags	Next Move	Description
000000L6	Library		Cn	Permanent	
000001L6	GemTrac		Cn	Permanent	
000002L6	Library		Cn	Permanent	
000003L6	Offsite Vault	GemTrac	CMn	Permanent	
000004L6	Offsite Vault	GemTrac	CMnN	Permanent	Friday Backup
000005L6	Offsite Vault		CDnNO	Friday, October 29, ...	Friday Backup
000006L6	Library	Offsite Vault	CDMnN	Thursday, March 17...	Monthly January
000007L6	Offsite Vault		CDnO	Wednesday, Octob...	
000008L6	Library		Cn	Permanent	
000009L6	Offsite Vault		CDnNO	Friday, March 25, 20...	Friday Backup
000010L6	GemTrac		Cn	Permanent	
000011L6	Library		Cn	Permanent	
000012L6	Library		Cn	Permanent	
000013L6	GemTrac		Cn	Permanent	
000014L6	Offsite Vault		CnO	Permanent	
000015L6	Library		Cn	Permanent	
000016L6	GemTrac		Cn	Permanent	
000017L6	Offsite Vault		CDnO	Friday, March 25, 20...	
000018L6	Offsite Vault		CDnO	Friday, March 25, 20...	
000019L6	Offsite Vault		CDnO	Friday, March 25, 20...	
000020L6	Offsite Vault		CDnO	Friday, March 25, 20...	

From: <https://rtfm.tapetrack.com/> - **TapeTrack Documentation**

Permanent link: https://rtfm.tapetrack.com/master/view/last_audit?rev=1629429359

Last update: **2025/01/21 22:07**

