

# Date Aging - Last Move Time

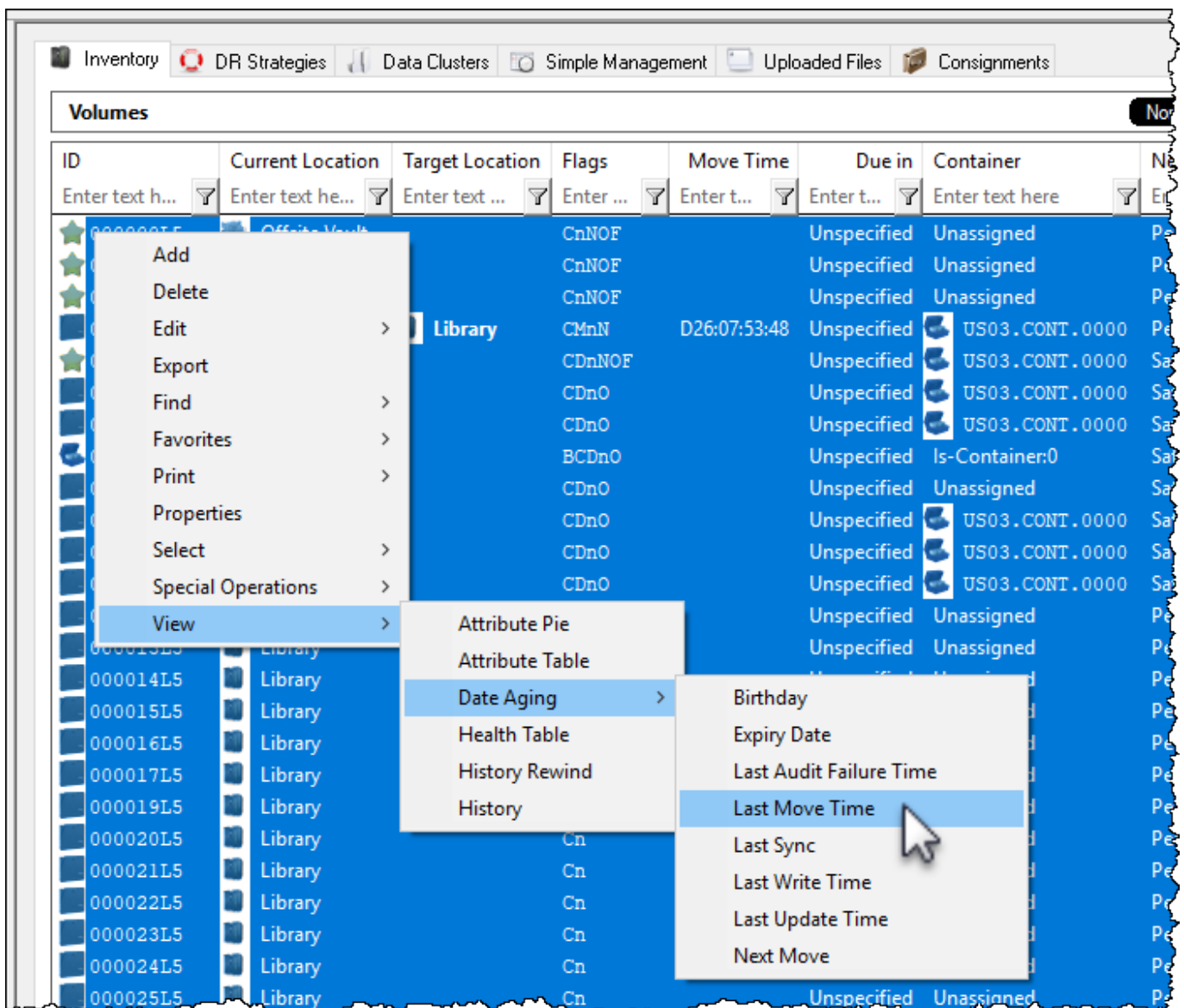
Displays a table and bar graph of selected volumes last move date and time.

## Selecting Volumes for Display

Select all volumes by right-clicking in the inventory window and select **Select→All**, or using **shift+click** and/or **control+click** select the range of tapes required.

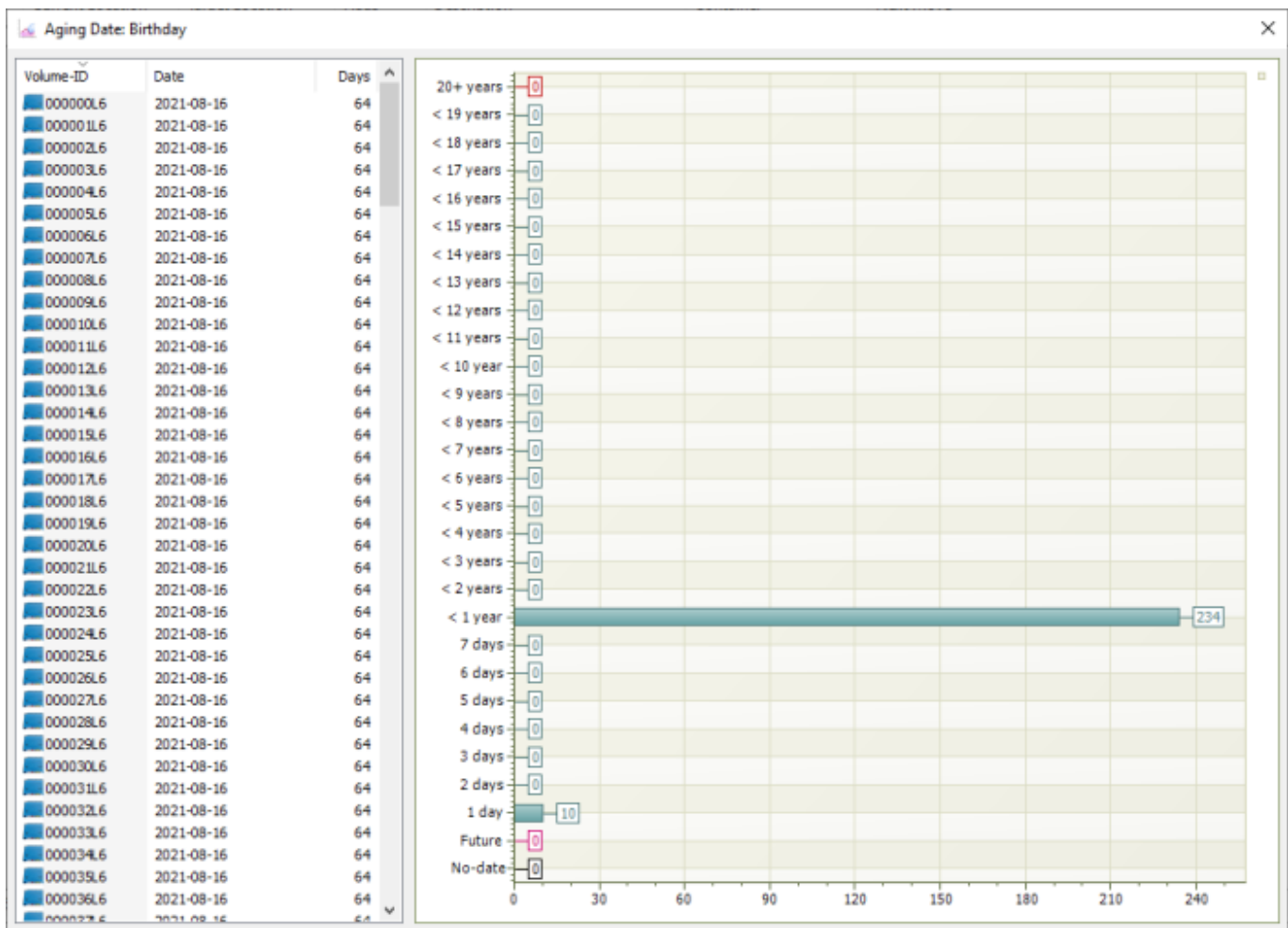
## Display Volume Last Move Time

Right-click the selected volumes and click **View→Date Aging→Last Move Time**.



Volumes and associated information can be reordered by Volume ID, Date created or Days since creation by clicking on column headings. Clicking on the same heading will change the displayed

order between ascending and descending order.



## Right-Click Options

Right-clicking in the table (left) side of the report gives you the options:

- **Edit**
  - **Copy**: Copies the selected Volume ID's to the clipboard.
- **Export**
  - **To Email**: Adds a fixed with text file with Volume IDs, Date and time of creation and days since creation to email.
  - **To Text File**: Exports Volume IDs, Date last moved and days since moved to fixed width text file.
- **Print**
  - **All**: Prints all volumes with Date last moved and days since moved.
  - **Selected**: Prints selected volumes with Date last moved and days since moved.

Click the X in the top right of the window to close.

From:  
<https://rtfm.tapetrack.com/> - **TapeTrack Documentation**

Permanent link:  
[https://rtfm.tapetrack.com/master/view/last\\_move\\_time?rev=1517844327](https://rtfm.tapetrack.com/master/view/last_move_time?rev=1517844327)

Last update: **2025/01/21 22:07**

