

# Date Aging - Last Move Time

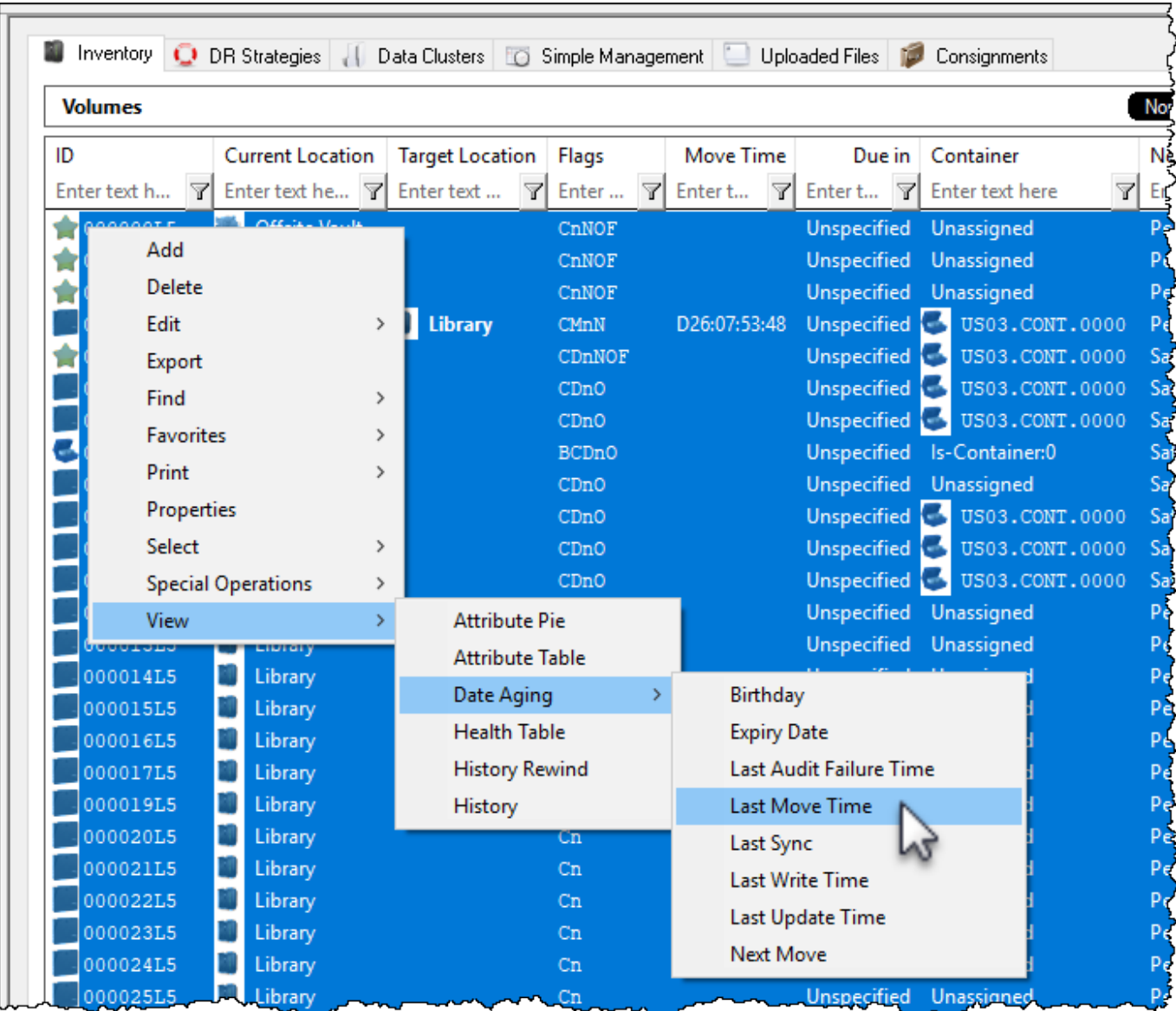
Displays a table and bar graph of selected volumes last move date and time.

## Selecting Volumes for Display

Select all volumes by right-clicking in the inventory window and select **Select→All**, or using **shift+click** and/or **control+click** select the range of tapes required.

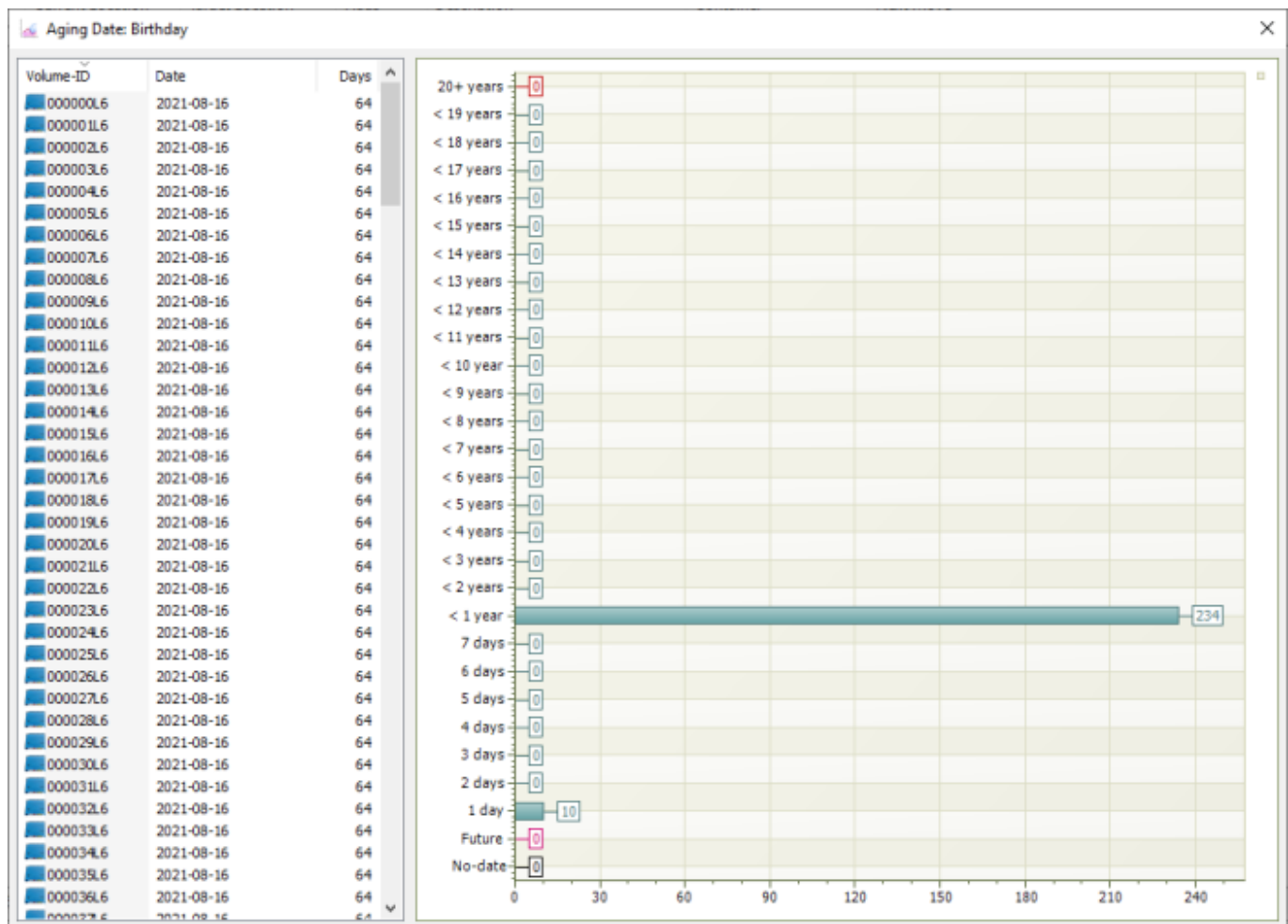
## Display Volume Last Move Time

Right-click the selected volumes and click **View→Date Aging→Last Move Time**.



Volumes and associated information can be reordered by Volume-ID, Date created or Days since creation by clicking on column headings. Clicking on the same heading will change the displayed

order between ascending and descending order.



## Right-Click Options

Right-clicking in the table (left) side of the report gives you the options:

- **Edit**
  - **Copy**: Copies the selected Volume-ID's to the clipboard.
- **Export**
  - **To Email**: Adds a fixed width text file with Volume-IDs, Date and time of creation and days since creation to email.
  - **To Text File**: Exports Volume-IDs, Date last moved and days since moved to fixed width text file.
- **Print**
  - **All**: Prints all volumes with Date last moved and days since moved.
  - **Selected**: Prints selected volumes with Date last moved and days since moved.

Click the X in the top right of the window to close.

From:

<https://rtfm.tapetrack.com/> - **TapeTrack Documentation**

Permanent link:

[https://rtfm.tapetrack.com/master/view/last\\_move\\_time?rev=1551304361](https://rtfm.tapetrack.com/master/view/last_move_time?rev=1551304361)

Last update: **2025/01/21 22:07**

