

Date Aging - Last Move Time

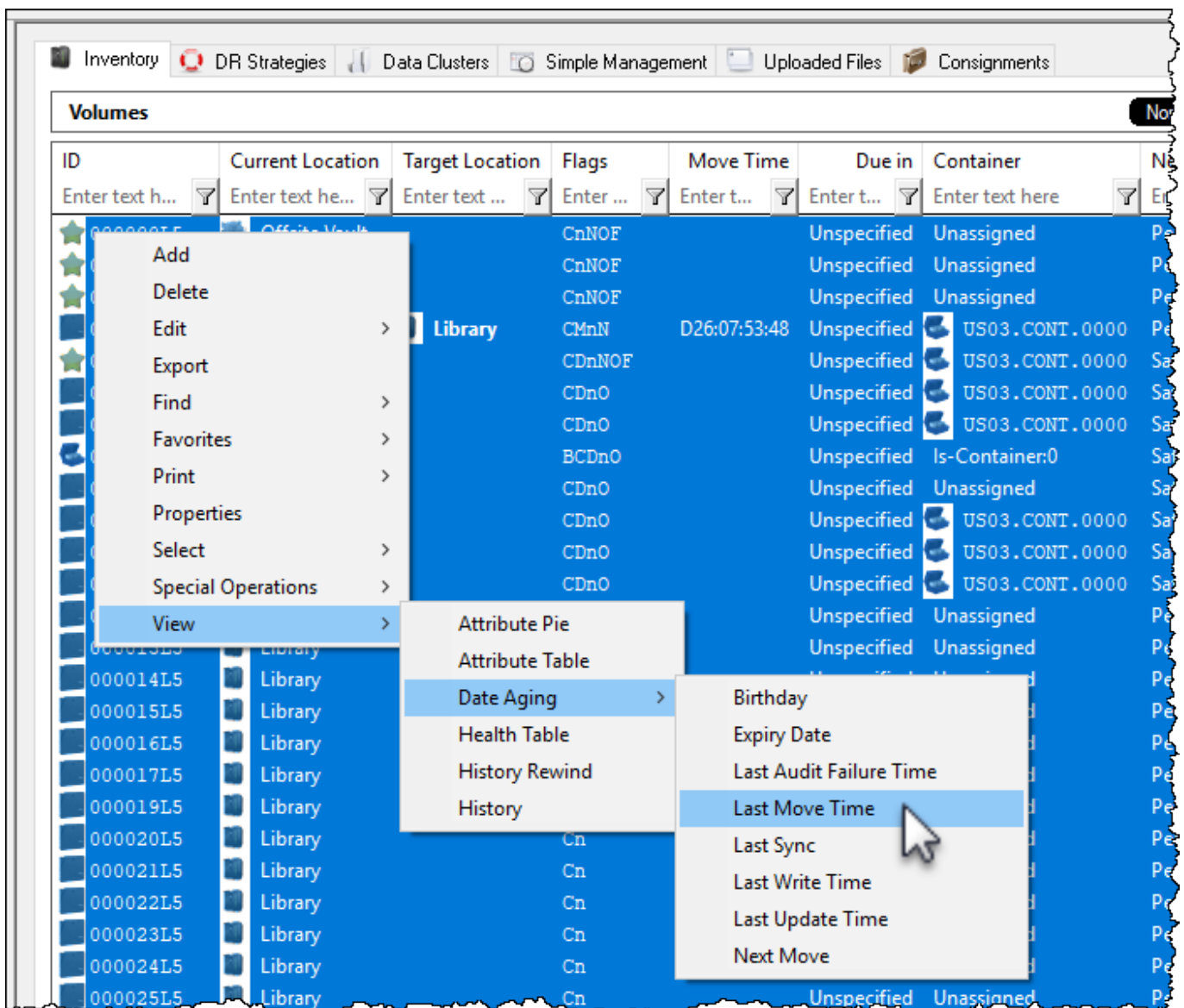
Displays a table and bar graph of selected [Volumes](#) last move date and time.

Selecting Volumes for Display

Select all [Volumes](#) by right-clicking in the Inventory window and select **Select→All**, or using **shift+click** and/or **control+click** select the range of [Volumes](#) required.

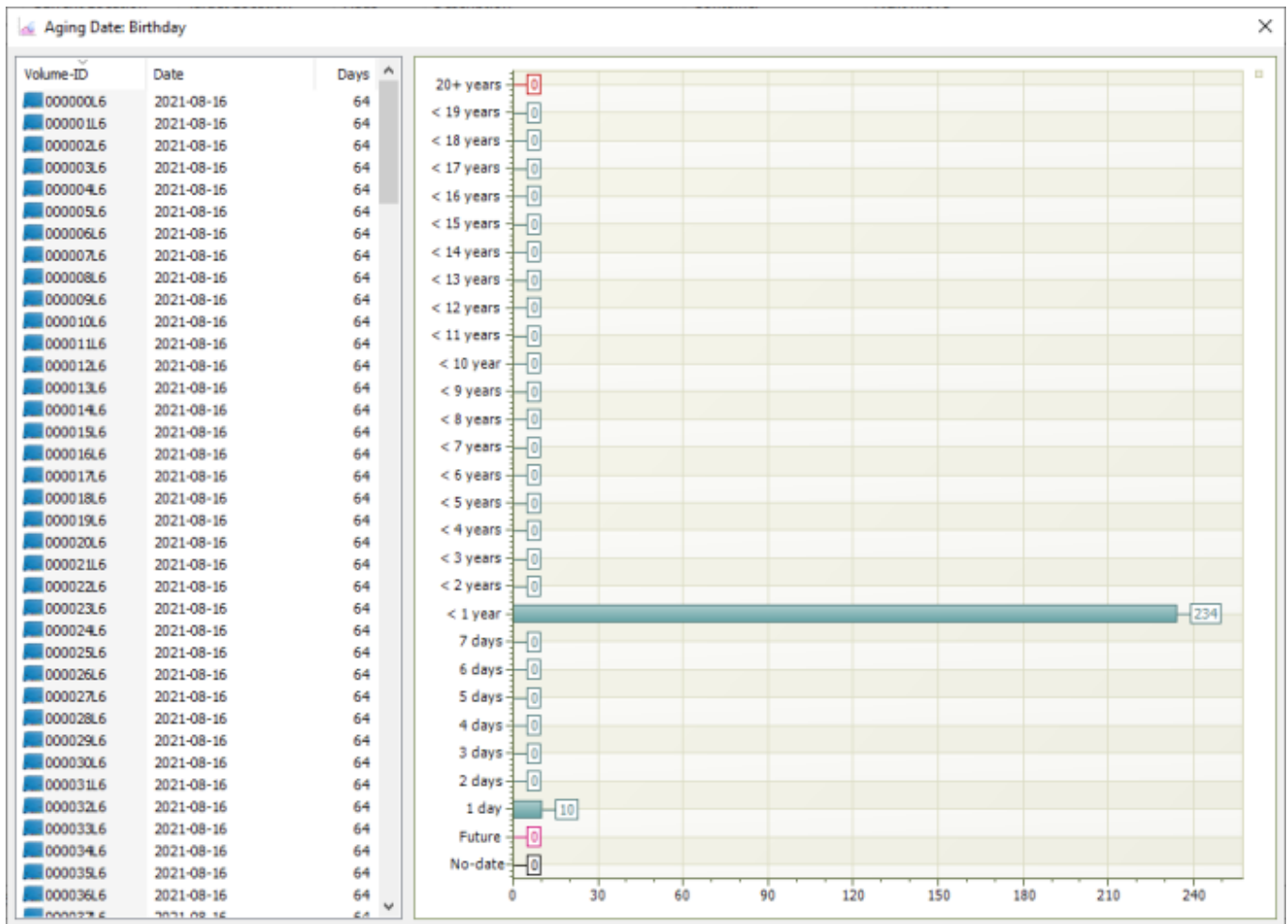
Display Volume Last Move Time

Right-click the selected [Volumes](#) and click **Reports→Date Aging→Last Move Time**.



[Volumes](#) and associated information can be reordered by [Volume-ID](#), Date created or Days since creation by clicking on column headings. Clicking on the same heading will change the displayed

order between ascending and descending order.



Right-Click Options

Right-clicking in the table (left) side of the report gives you the options:

- **Edit**
 - **Copy**: Copies the selected Volume-ID's to the clipboard.
- **Export**
 - **To Email**: Adds a fixed with text file with Volume-IDs, Date and number of days until expiry to email
 - **To Text File**: Exports Volume-IDs, Date and number of days until expiry to fixed width text file.
- **Copy Column**
 - **Volume-ID**
 - **Date**
 - **Days**
- **Export (CTRL+E)**
- **Filters**
 - **Clear All (CTRL+F)**
 - **Restore (CTRL+L)**
 - **Save (CTRL+K)**
- **Print (CTRL+P)**

- **Select**
 - **All (CTRL+A)**
 - **Invert (CTRL+I)**
 - **Random (CTRL+R)**
- **View**
 - **Icon (CTRL+1)**
 - **List (CTRL+2)**
 - **Report (CTRL+3)**
 - **Small Icon (CTRL+4)**

Click the X in the top right of the window to close.

From:
<https://rtfm.tapetrack.com/> - **TapeTrack Documentation**

Permanent link:
https://rtfm.tapetrack.com/master/view/last_move_time?rev=1553134976

Last update: **2025/01/21 22:07**

