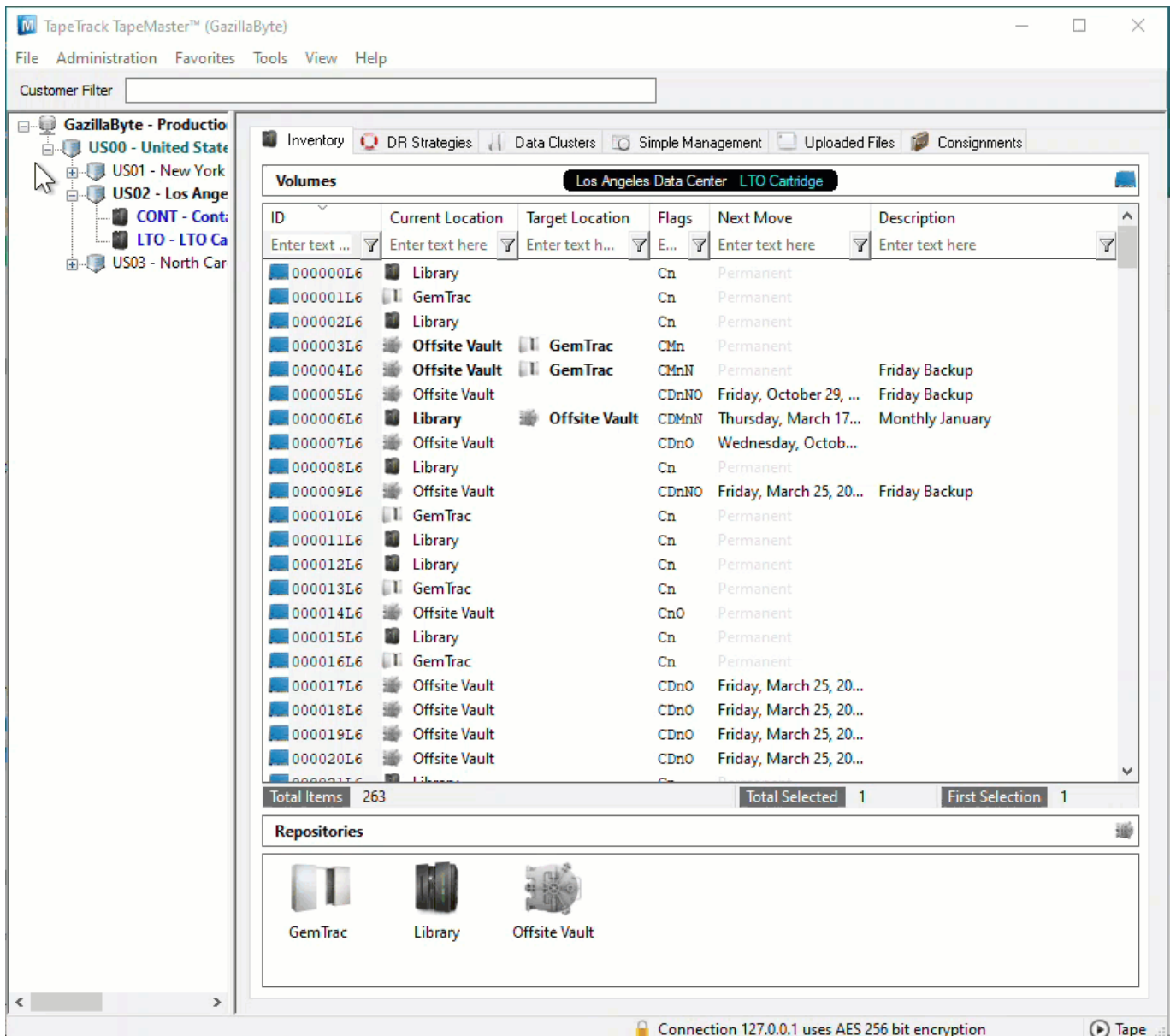


Date Aging - Last Sync

Displays a table and bar graph of selected **Volumes** last synchronization date.

Selecting Volumes for Display

Select all **Volumes** by right-clicking in the Inventory window and select **Select→All**, or using **shift+click** and/or **control+click** select the range of **Volumes** required.

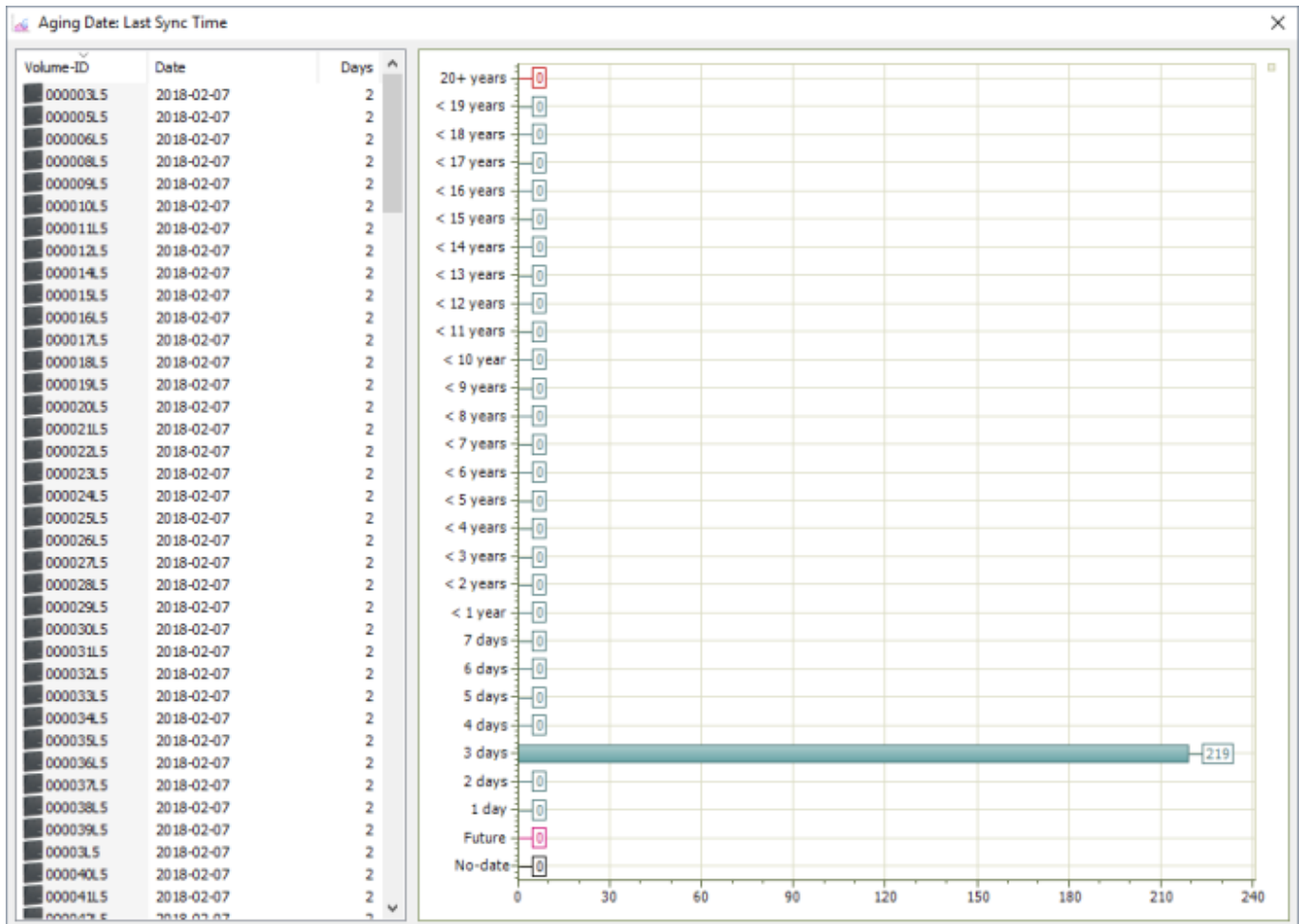


Display Last Sync Date

Right-click the selected **Volumes** and click **Reports→Date Aging→Last Sync**.

The screenshot displays a web application interface with a top navigation bar containing 'Inventory', 'DR Strategies', 'Data Clusters', 'Simple Management', 'Uploaded Files', and 'Consignments'. Below this is a 'Volumes' section with a 'Nashville' label. A table lists volume information with columns: ID, Current Location, Target Location, Flags, Move Time, Due in, Container, and Next Move. A context menu is open over the table, showing options like 'Add', 'Delete', 'Edit', 'Find', 'Favorites', 'Properties', 'Reports', 'Special Operations', 'Run Command', 'Special Printing', 'Copy Column', 'Export', 'Filters', 'Print', 'Select', and 'View'. The 'Reports' menu is expanded, showing 'Attribute Pie', 'Attribute Table', 'Date Aging', 'Generation Dispersement Table', 'Health Table', 'History Rewind', and 'History'. The 'Date Aging' menu is further expanded, showing 'Birthday', 'Expiry Date', 'Last Audit Failure Time', 'Last Move Time', 'Last Sync', 'Last Write Time', 'Last Update Time', and 'Next Move'. A mouse cursor is hovering over the 'Last Sync' option. The table rows include details such as 'Library', 'GemTrac', 'Offsite Vault', and various flags and move times.

Volumes and associated information can be reordered by Volume-ID, Date or Days since last sync by clicking on column headings. Clicking on the same heading will change the displayed order between ascending and descending order.



Right-Click Options

Right-clicking in the table (left) side of the report gives you the options:

- Edit
 - Copy: Copies the selected Volume-ID's to the clipboard.
- Export
 - To Email: Adds a fixed with text file with Volume-IDs, Date and number of days until expiry to email
 - To Text File: Exports Volume-IDs, Date and number of days until expiry to fixed width text file.
- Copy Column
 - Volume - ID: Copies Volume-ID values to windows clipboard.
 - Date: Copies Date values to windows clipboard.
 - Days: Copies Days values to windows clipboard.
- Export (Ctrl+E): Exports data to file.
- Filters
 - Clear All (Ctrl+F): Clears Filter values.
 - Restore (Ctrl+L): Restore Filter values from file.
 - Save (Ctrl+K): Save Filter values to file.
- Print (Ctrl+P): Prints selected **Volumes** to PDF.
- Select
 - All (Ctrl+A): Select all **Volumes**.

- Invert (Ctrl+I): Invert selected [Volumes](#).
- Random (Ctrl+R): Select a [User](#) set number of random [Volumes](#).
- View
 - Icon (Ctrl+1): Set inventory view to Icons.
 - List (Ctrl+2): Set inventory view to List.
 - Report (Ctrl+3): Set inventory view to Report.
 - Small Icon (Ctrl+4): Set inventory view to Small Icons.

Click the X in the top right of the window to close.

From:

<https://rtfm.tapetrack.com/> - **TapeTrack Documentation**

Permanent link:

https://rtfm.tapetrack.com/master/view/last_sync?rev=1629430586

Last update: **2025/01/21 22:07**

