

# Date Aging - Last Update Time

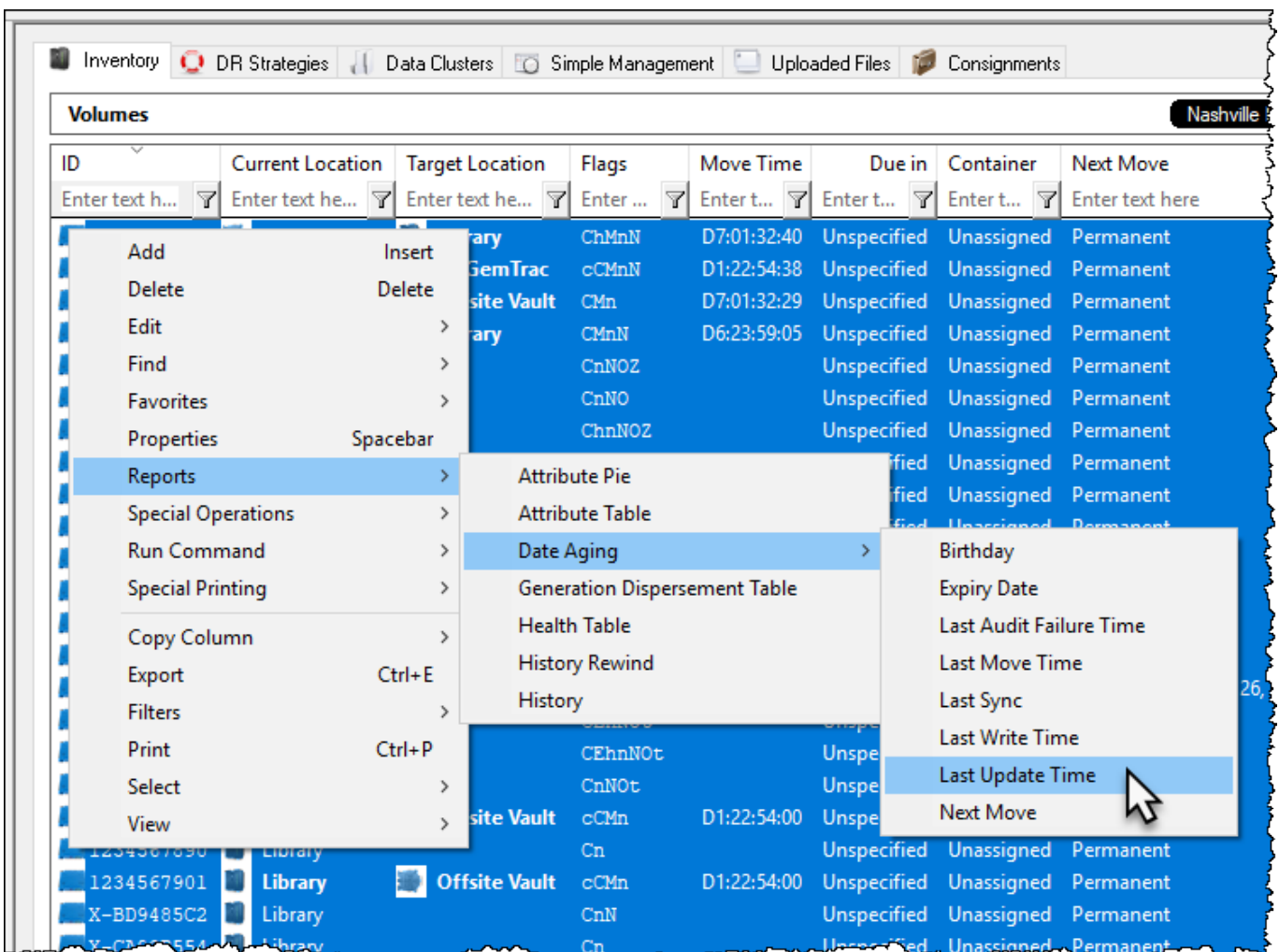
Displays a table and bar graph of selected **Volumes** last update time and date.

## Selecting Volumes for Display

Select all **Volumes** by right-clicking in the inventory window and select **Select→All**, or using **shift+click** and/or **control+click** select the range of **Volumes** required.

## Display Volume Last Update Time

Right-click the selected volumes and click **View→Date Aging→Last Update Time**.



Volumes and associated information can be reordered by Volume-ID, Date or Days since last write by clicking on column headings. Clicking on the same heading will change the displayed order between ascending and descending order.



- **Invert (CTRL+I)**
- **Random (CTRL+R)**
- **View**
  - **Icon (CTRL+1)**
  - **List (CTRL+2)**
  - **Report (CTRL+3)**
  - **Small Icon (CTRL+4)**

Click the X in the top right of the window to close.

From:  
<https://rtfm.tapetrack.com/> - **TapeTrack Documentation**

Permanent link:  
[https://rtfm.tapetrack.com/master/view/last\\_update?rev=1553132853](https://rtfm.tapetrack.com/master/view/last_update?rev=1553132853)

Last update: **2025/01/21 22:07**

