

# Date Aging - Last Write Time

Displays a table and bar graph of selected [Volumes](#) last write time and date.

## Selecting Volumes for Display

Select all [Volumes](#) by right-clicking in the inventory window and select **Select→All**, or using **shift+click** and/or **control+click** select the range of [Volumes](#) required.

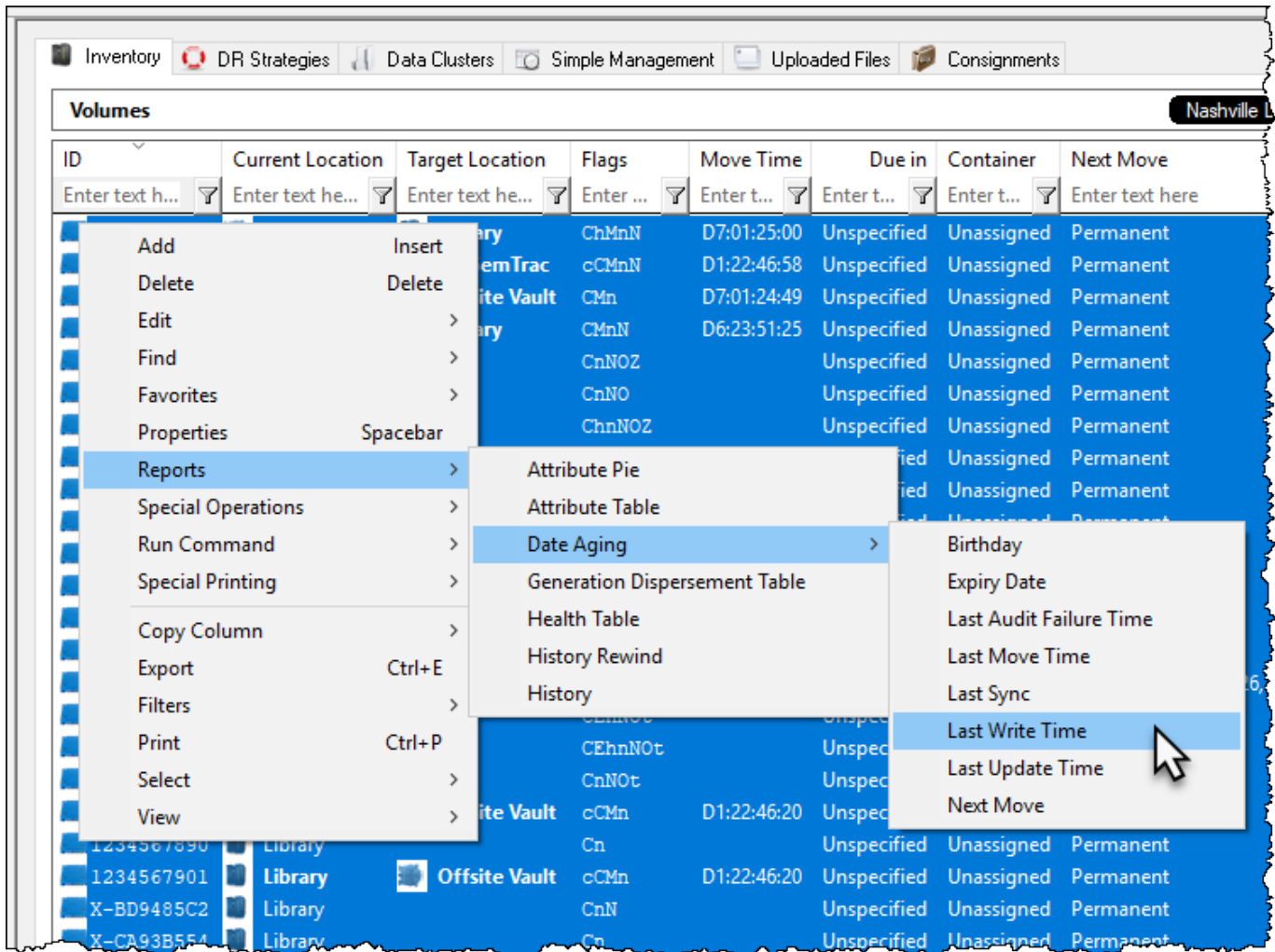
The screenshot displays the TapeTrack TapeMaster interface. The main window shows a table of volumes with the following columns: ID, Current Location, Target Location, Flags, Next Move, and Description. The table is filtered to show volumes in the 'Los Angeles Data Center' using 'LTO Cartridge'.

ID	Current Location	Target Location	Flags	Next Move	Description
000000L6	Library		Cn	Permanent	
000001L6	GemTrac		Cn	Permanent	
000002L6	Library		Cn	Permanent	
000003L6	Offsite Vault	GemTrac	CMn	Permanent	
000004L6	Offsite Vault	GemTrac	CMnN	Permanent	Friday Backup
000005L6	Offsite Vault		CDnNO	Friday, October 29, ...	Friday Backup
000006L6	Library	Offsite Vault	CDMnN	Thursday, March 17...	Monthly January
000007L6	Offsite Vault		CDnO	Wednesday, Octob...	
000008L6	Library		Cn	Permanent	
000009L6	Offsite Vault		CDnNO	Friday, March 25, 20...	Friday Backup
000010L6	GemTrac		Cn	Permanent	
000011L6	Library		Cn	Permanent	
000012L6	Library		Cn	Permanent	
000013L6	GemTrac		Cn	Permanent	
000014L6	Offsite Vault		CnO	Permanent	
000015L6	Library		Cn	Permanent	
000016L6	GemTrac		Cn	Permanent	
000017L6	Offsite Vault		CDnO	Friday, March 25, 20...	
000018L6	Offsite Vault		CDnO	Friday, March 25, 20...	
000019L6	Offsite Vault		CDnO	Friday, March 25, 20...	
000020L6	Offsite Vault		CDnO	Friday, March 25, 20...	

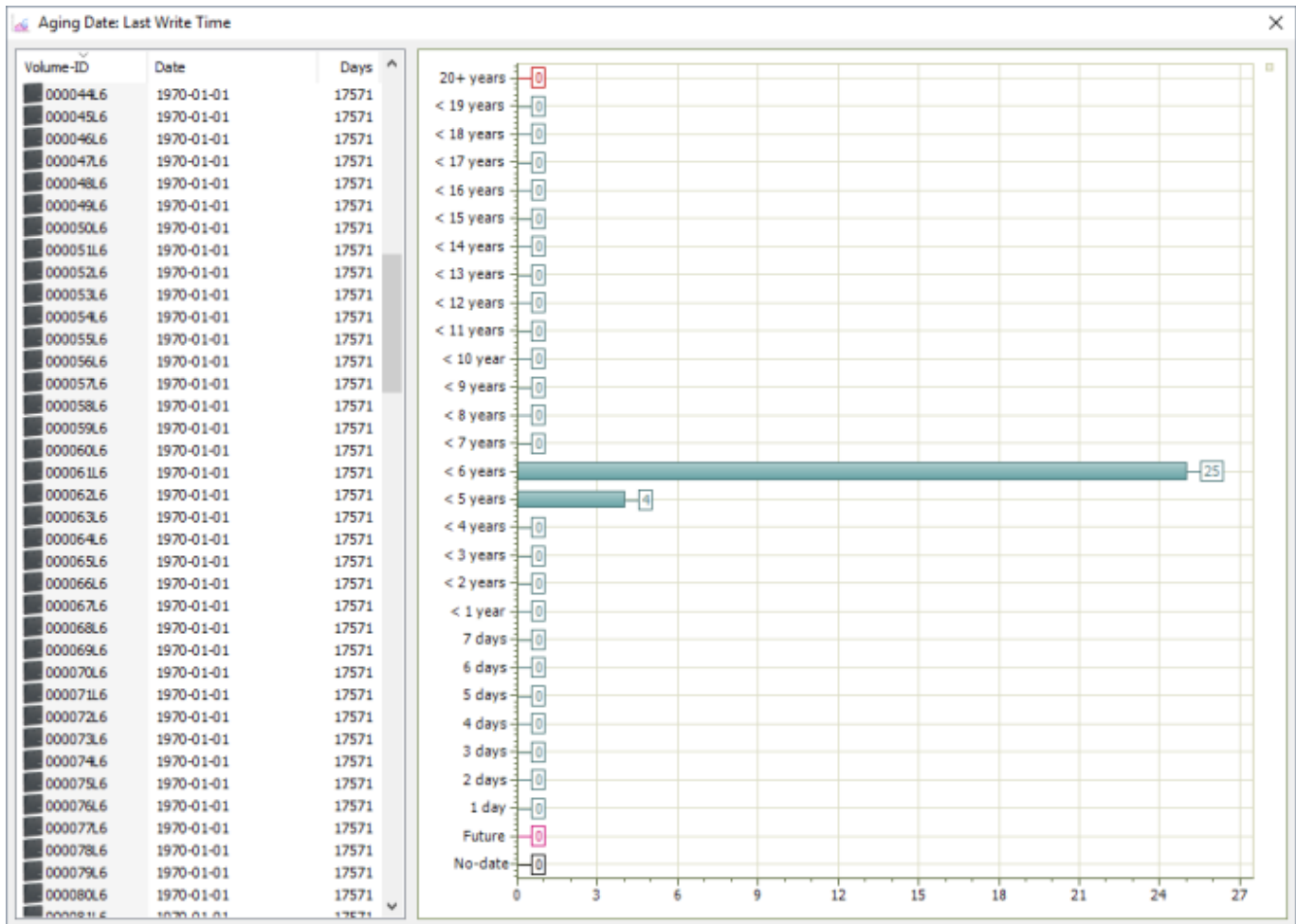
At the bottom of the table, it shows 'Total Items: 263', 'Total Selected: 1', and 'First Selection: 1'. Below the table is a 'Repositories' section with icons for GemTrac, Library, and Offsite Vault. The status bar at the bottom indicates 'Connection 127.0.0.1 uses AES 256 bit encryption' and a 'Tape' icon.

## Display Last Write Time

Right-click the selected [Volumes](#) and click **Reports→Date Aging→Last Write Time**.



Volumes and associated information can be reordered by Volume-ID, Date or Days since last write by clicking on column headings. Clicking on the same heading will change the displayed order between ascending and descending order.



## Right-Click Options

Right clicking on the left window will present a menu of extra functions:

- Properties: Opens [Volume Properties](#), if multiple [Volumes](#) are selected [Volume Properties](#) will open sequentially for each one.
- Copy Column
  - Volume - ID: Copies selected [Volume-ID's](#) column values to Windows Clipboard.
  - Date: Copies selected [Volume-ID's](#) Dates column values to Windows Clipboard.
  - Days: Copies selected [Volume-ID's](#) Days column values to Windows Clipboard.
- Count Unique Values
  - Volume - ID: Counts unique selected [Volume-ID's](#) column values and displays them in a Pie Chart and table.
  - Date: Counts unique selected Dates column values and displays them in a Pie Chart and table.
  - Days: Counts unique selected Days column values and displays them in a Pie Chart and table.
- Export: Opens Export window to export selected [Volume-ID's](#) to file.
- Filters
  - Clear All
  - Restore
  - Save
- Print: Prints selected [Volumes](#) to PDF.

- **Select**
  - All: Selects all **Volumes**.
  - Invert: Inverts **Volume** selection.
  - Random: Opens dialog to select a number of random **Volumes** (input number or percentage to be selected)
- **View**
  - Icon: Displays list in Icon format.
  - List: Displays **Volume-ID's** in List format.
  - Report: Displays list in Report format including **Volume-ID**, Date and Days.
  - Small Icon: Displays list in Small Icon format.
  - Extras
    - Balance Columns: Balances column spacing in report.
    - Display Gridlines: Adds Gridlines to rows in report.
    - Display Pyjama Paper Style: Adds Pyjama paper style shading to rows in report.

2021/08/20 00:37 · Scott Cunliffe

[insert](#)

From: <https://rtfm.tapetrack.com/> - **TapeTrack Documentation**

Permanent link: [https://rtfm.tapetrack.com/master/view/last\\_write?rev=1629431177](https://rtfm.tapetrack.com/master/view/last_write?rev=1629431177)

Last update: **2025/01/21 22:07**

