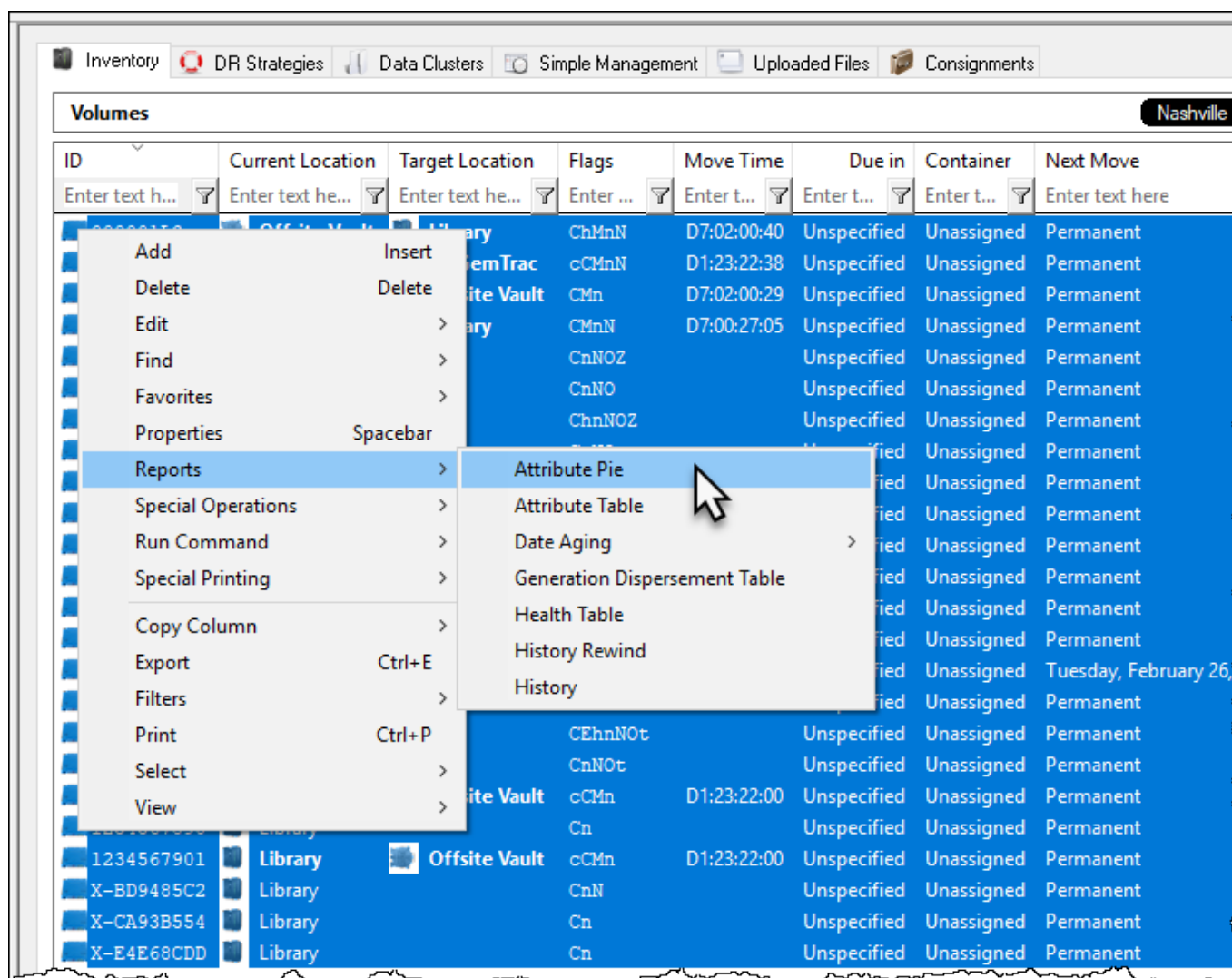


Attribute Pie

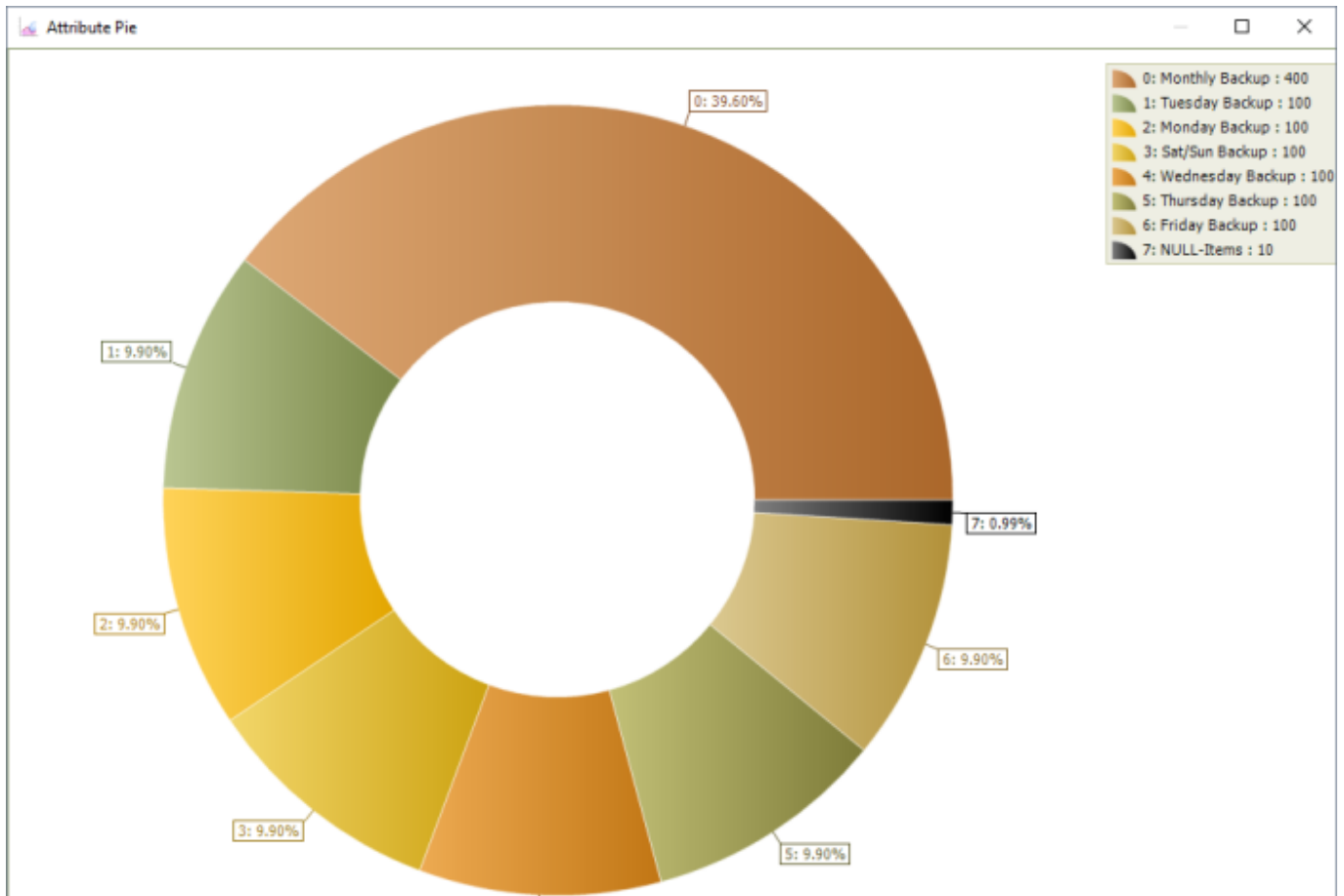
The attribute pie graph displays volume attribute data in a simple easy to read format. Volumes are grouped by similar attribute values and displayed in a % based format with a color coded key.

Selecting Volumes for Display

Select all volumes by right clicking in the inventory window and select **Select→All**, or using **shift+click** and/or **control+click** select the range of tapes required.



Right click the selected volumes and click **View→Attribute Pie**.



Click the X in the top right of the window to close.

From: <https://rtfm.tapetrack.com/> - **TapeTrack Documentation**

Permanent link: https://rtfm.tapetrack.com/master/view_attribute_pie?rev=1513901345

Last update: **2025/01/21 22:07**

