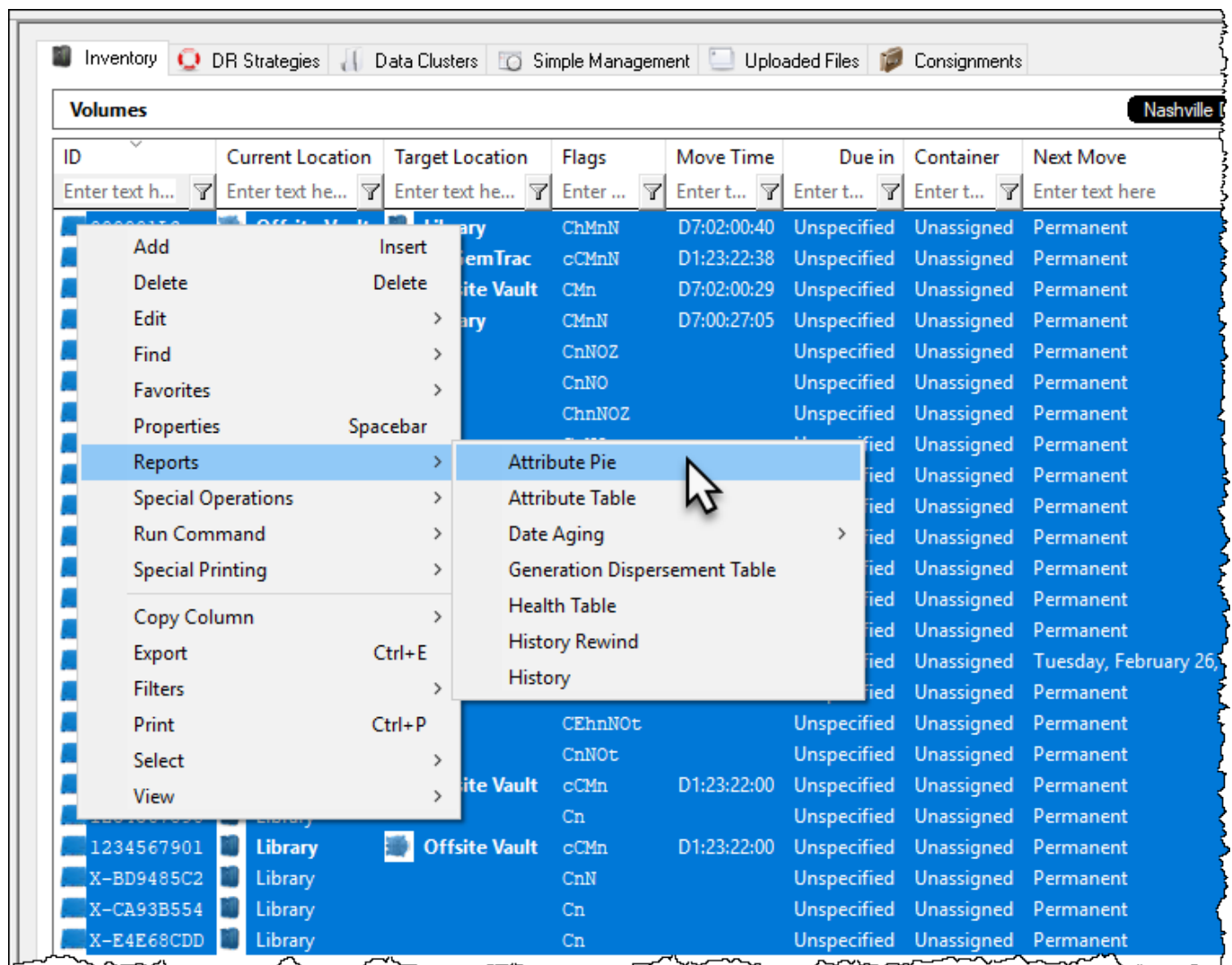


# Attribute Pie

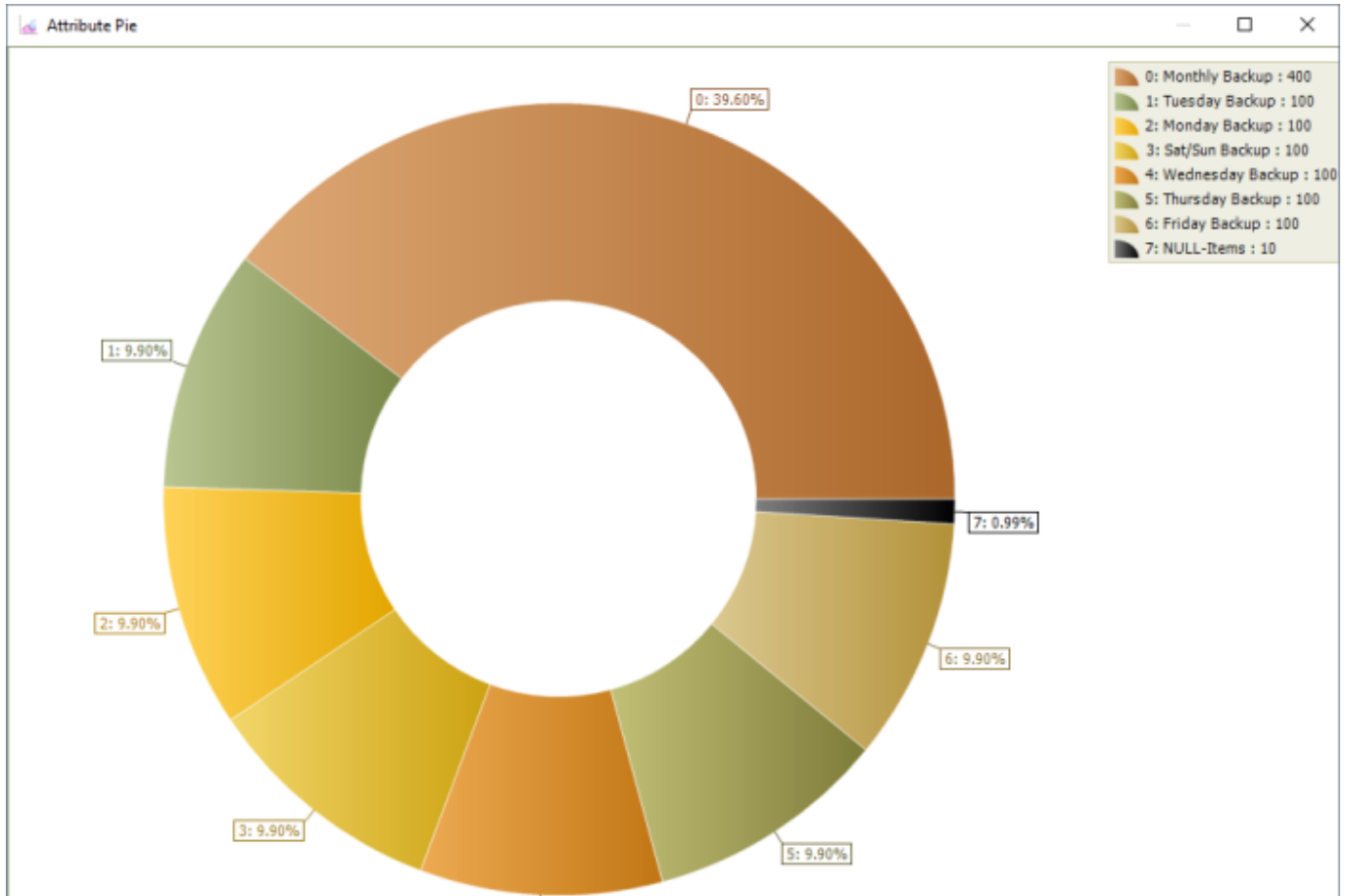
The attribute pie graph displays volume attribute data in a simple easy to read format. Volumes are grouped by similar attribute values and displayed in a % based format with a color coded key.

## Selecting Volumes for Display

Select all volumes by right clicking in the inventory window and select **Select→All**, or using **shift+click** and/or **control+click** select the range of **volumes** required.



Right click the selected volumes and click **View→Attribute Pie**.



Click the X in the top right of the window to close.

From: <https://rtfm.tapetrack.com/> - **TapeTrack Documentation**

Permanent link: [https://rtfm.tapetrack.com/master/view\\_attribute\\_pie?rev=1530151171](https://rtfm.tapetrack.com/master/view_attribute_pie?rev=1530151171)

Last update: **2025/01/21 22:07**

