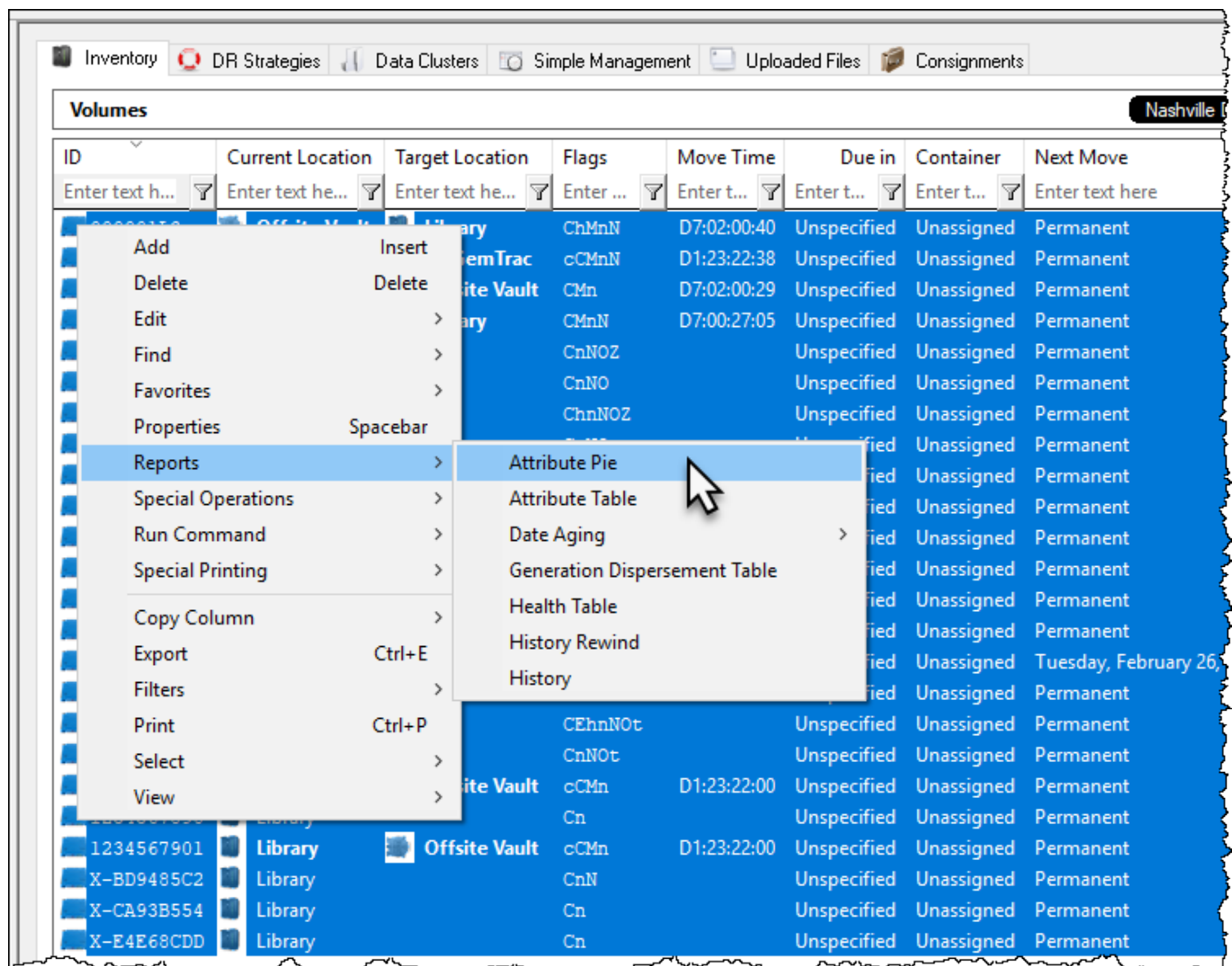


# Attribute Pie

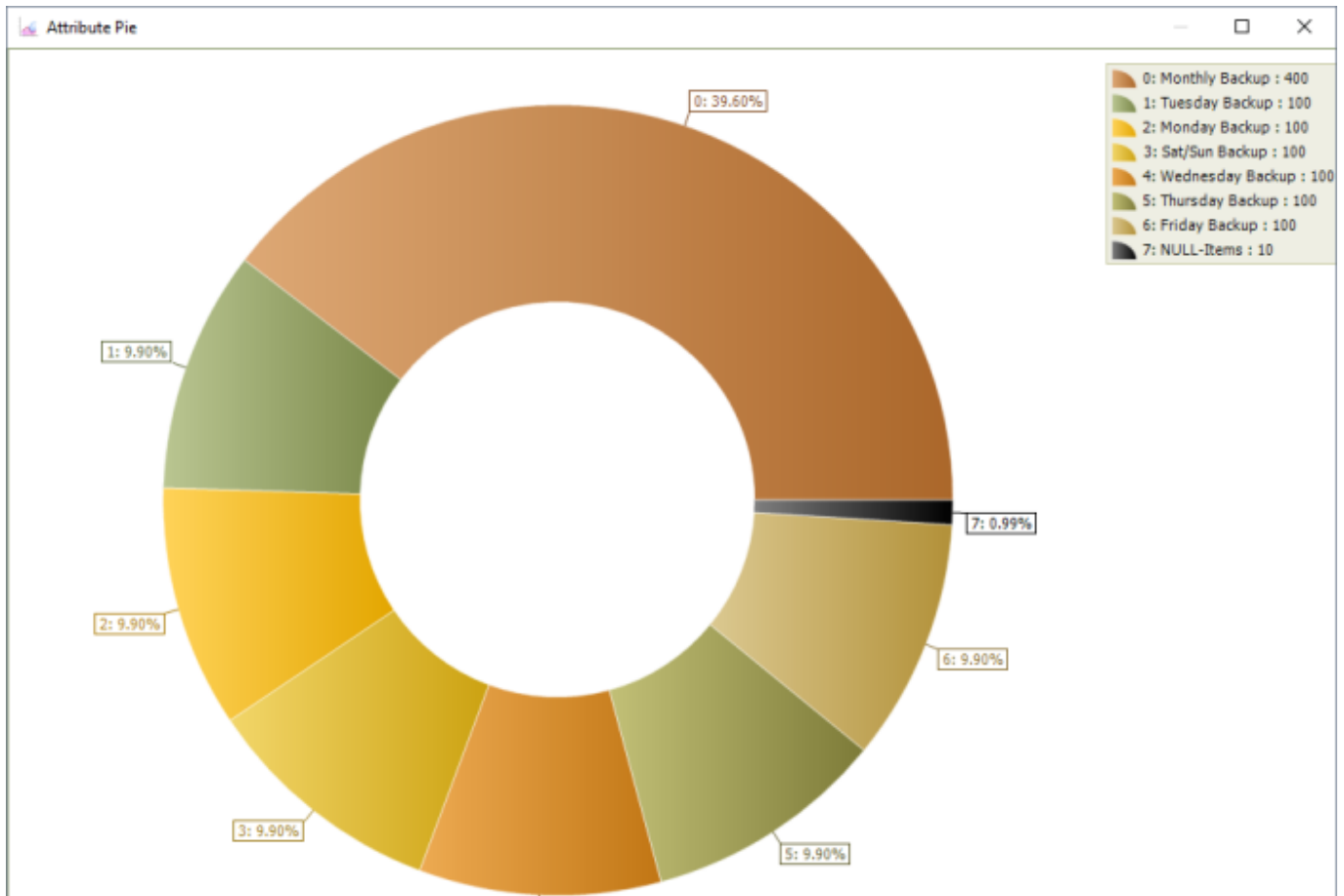
The Attribute pie graph displays **volume** Attribute data in a simple easy to read format. **Volumes** are grouped by similar Attribute values and displayed in a % based format with a color coded key.

## Selecting Volumes for Display

Select all **Volumes** by right clicking in the Inventory window and select **Select→All**, or using **shift+click** and/or **control+click** select the range of **Volumes** required.



Right click the selected **Volumes** and click **Reports→Attribute Pie**.



Click the X in the top right of the window to close.

From: <https://rtfm.tapetrack.com/> - **TapeTrack Documentation**

Permanent link: [https://rtfm.tapetrack.com/master/view\\_attribute\\_pie?rev=1565826380](https://rtfm.tapetrack.com/master/view_attribute_pie?rev=1565826380)

Last update: **2025/01/21 22:07**

