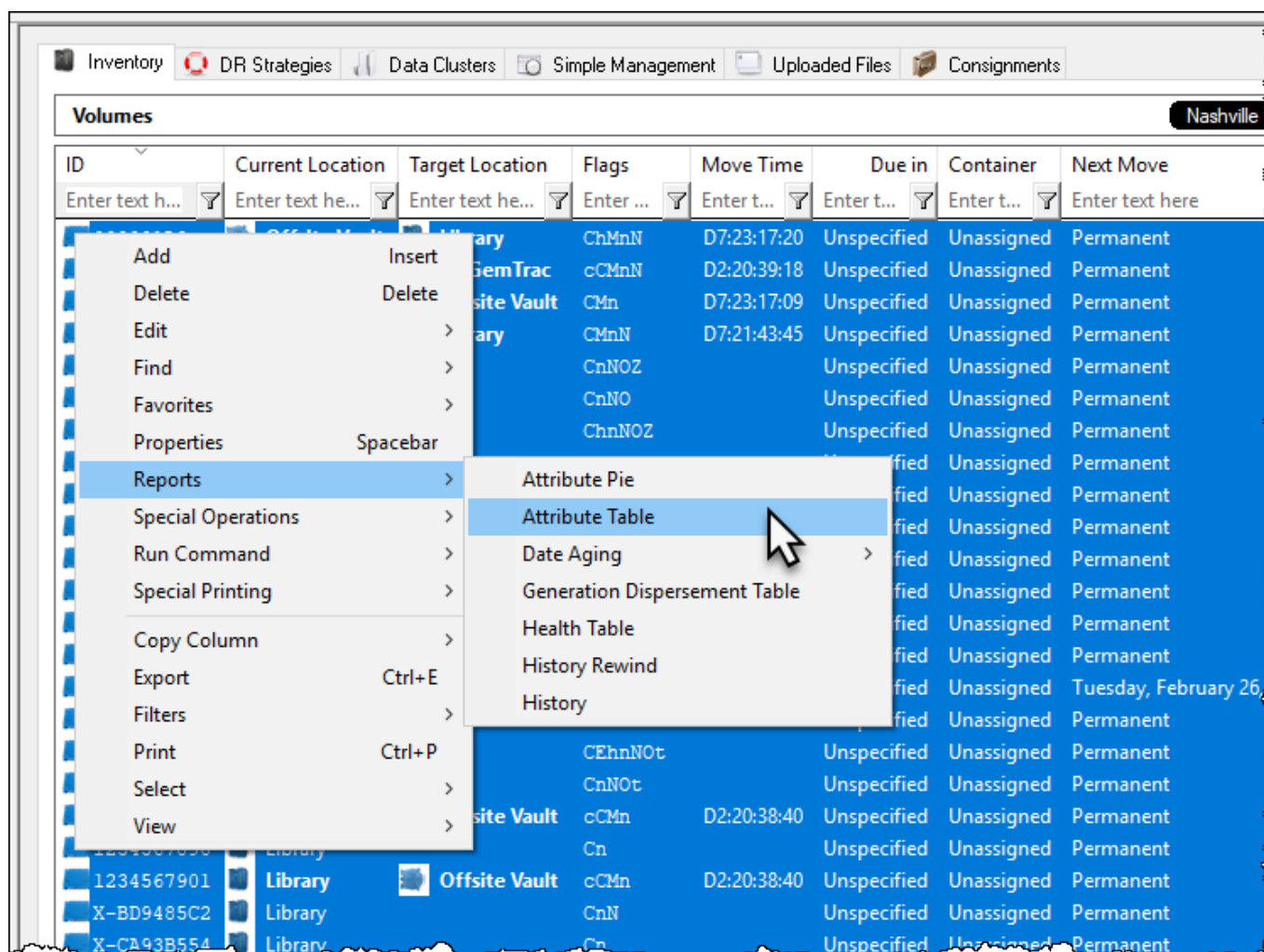


Attribute Table

The attribute table displays **Volume** attribute data in a table format. **Volumes** are displayed in **Volume-ID** order by default.

Selecting Volumes for Display

Select all **Volumes** by right clicking in the Inventory window and select **Select→All**, or using **shift+click** and/or **control+click** select the range of **Volumes** required.



Right click the selected **Volumes** and click **Report→Attribute Table**.

Volume-ID	Description
Enter text h... <input type="text"/>	Month* <input type="text"/>
0000007	Monthly Backup
0000008	Monthly Backup
0000009	Monthly Backup
0000010	Monthly Backup
0000017	Monthly Backup
0000018	Monthly Backup
0000019	Monthly Backup
0000020	Monthly Backup
0000027	Monthly Backup
0000028	Monthly Backup
0000029	Monthly Backup
0000030	Monthly Backup
0000037	Monthly Backup
0000038	Monthly Backup
0000039	Monthly Backup
0000040	Monthly Backup

Data can be filtered by using the TapeTrack [String Filters](#)

Right Click Options

Right-clicking in the table of the report gives you the options:

- **Edit**
 - **Copy**: Copy the selected [Volume-ID's](#)
- **Export**
 - **To Text File**: Exports the selected [Volume-ID's](#), and attribute values to text file.
 - **To XML**: Exports the selected [Volume-ID's](#), and attribute values to XML file.
- **Properties**
- **Properties (inclusive)**
- **Select**
 - **All (Ctrl+A)**: Select all [Volumes](#)
 - **Invert (Ctrl+I)**: Invert selected [Volumes](#)
 - **Random (Ctrl+R)**: Select a number of random [Volumes](#)

Click the X in the top right of the window to close.

From: <https://rtfm.tapetrack.com/> - **TapeTrack Documentation**

Permanent link: https://rtfm.tapetrack.com/master/view_attribute_table?rev=1553219831

Last update: **2025/01/21 22:07**

