

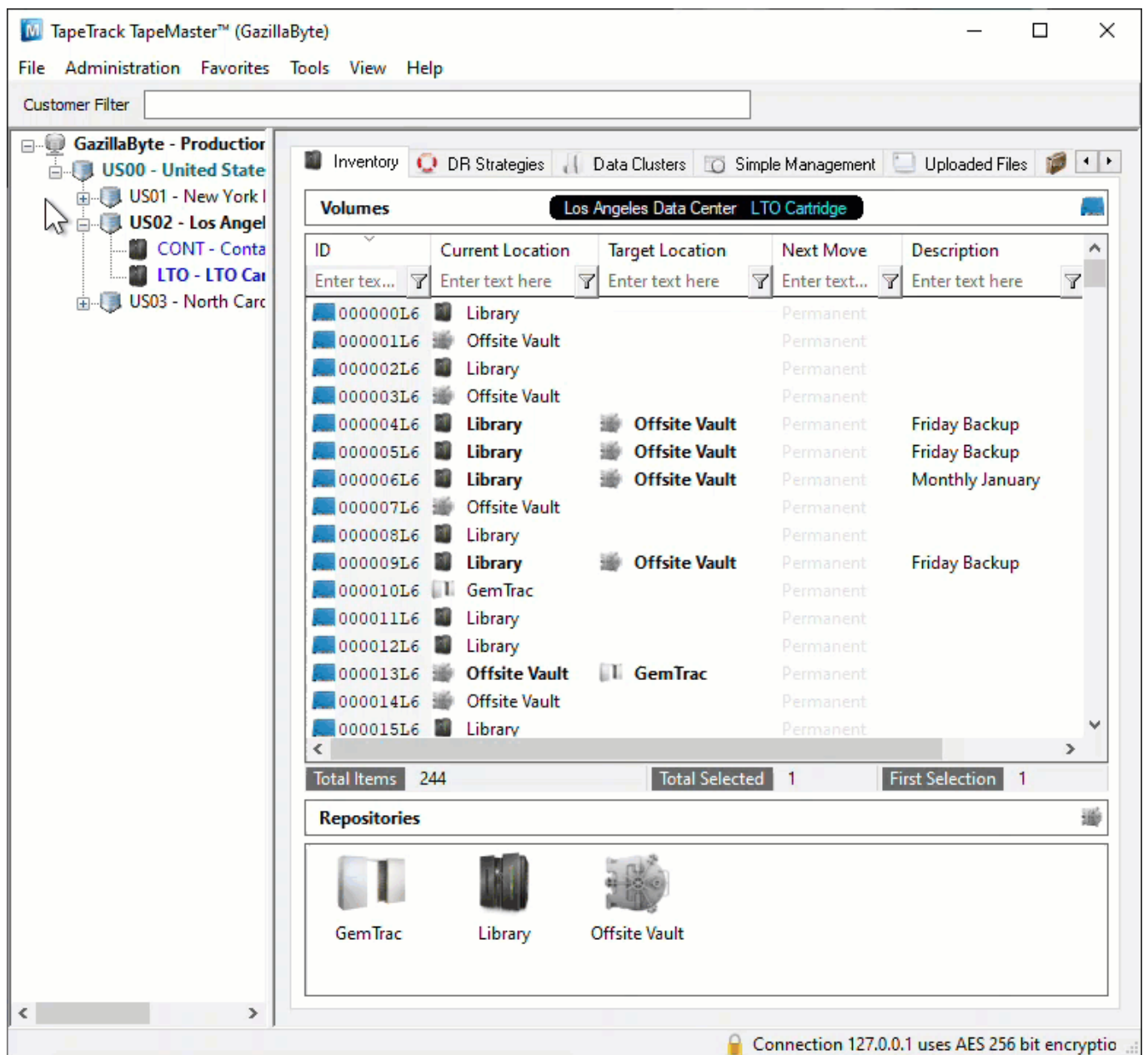
Attribute Table

The Attribute table displays **Volume** Attribute data in a table format and 3D pie chart. **Volumes** are displayed in **Volume-ID** order by default.

Selecting Volumes for Display

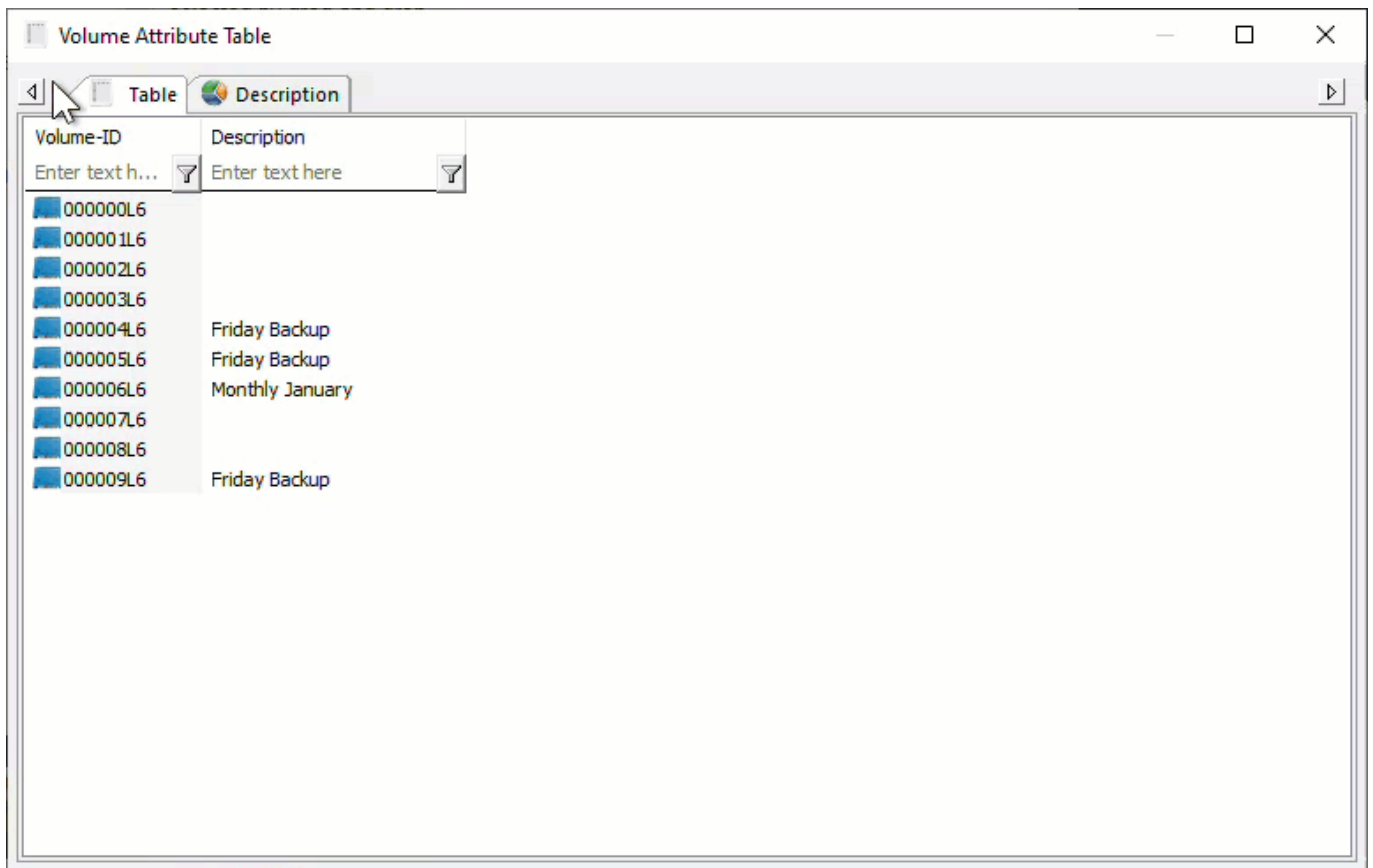
Select all **Volumes** by right-clicking in the Inventory window and select **Select→All**, or using **shift+click** and/or **control+click** select the range of **Volumes** required.

Right-click the selected **Volumes** and click **Report→Attribute Table**.



The Attribute Table will display the selected Volumes along with the currently displayed Attribute value on the Table tab.

The Description tab displays the number of unique description values and the number of instances each value appears. The Pie Chart can be rotated or flipped as required using the mouse cursor and zoomed in and out using the mouse scroll dial.



Volume-ID	Description
000000L6	
000001L6	
000002L6	
000003L6	
000004L6	Friday Backup
000005L6	Friday Backup
000006L6	Monthly January
000007L6	
000008L6	
000009L6	Friday Backup

Data in the Table tab can be filtered by using the TapeTrack [String Filters](#)

Right-Click Options

Right-clicking in the table of the report gives you the options:

- Properties
- Properties (inclusive)

-
- Copy Columns
 - Volume-ID
 - Description
 - Copy Unique Values
 - Volume-ID
 - Description
 - Export (Ctrl+E)
 - Filters
 - Clear All
 - Restore
 - Save'
 - Print

- **Select**
 - All (Ctrl+A): Select all **Volumes**
 - Invert (Ctrl+I): Invert selected **Volumes**
 - Random (Ctrl+R): Select a User set number of random **Volumes**
- **View**
 - Icon (Ctrl+1): Set inventory view to Icons.
 - List (Ctrl+2): Set inventory view to List.
 - Report (Ctrl+3): Set inventory view to Report.
 - Small Icon (Ctrl+4): Set inventory view to Small Icons.

Click the X in the top right of the window to close.

From:

<https://rtfm.tapetrack.com/> - **TapeTrack Documentation**

Permanent link:

https://rtfm.tapetrack.com/master/view_attribute_table?rev=1634521686

Last update: **2025/01/21 22:07**

