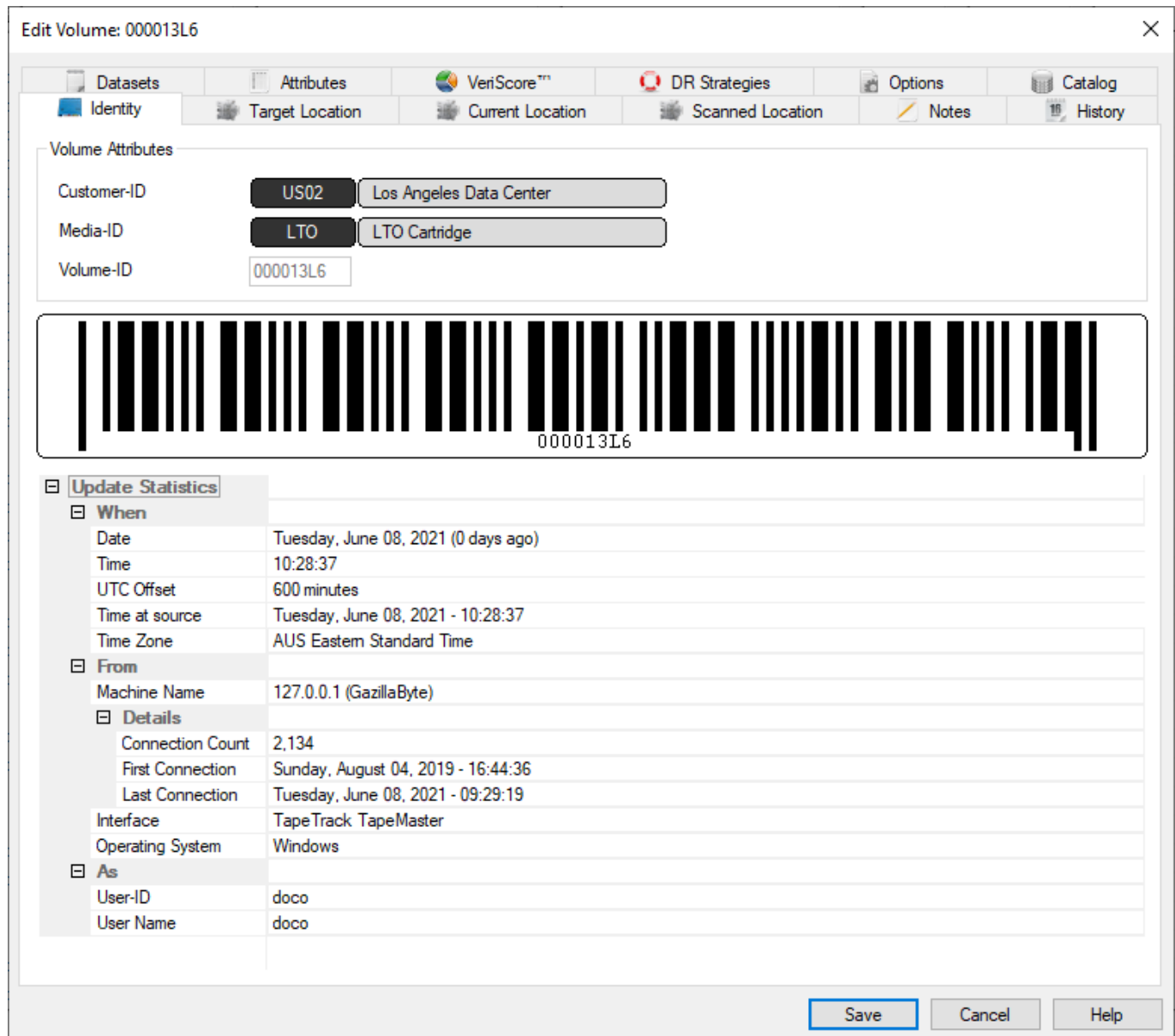


# Volume Properties Window

The **Volume Properties Window** contains information and administrative controls for each individual **Volume**. It can be accessed by right-clicking on a **Volume** in the Inventory window and selecting Properties.

This can also be achieved by either selecting the required **Volume/s** and pressing the space bar on your keyboard or double-clicking the a **Volume** in the **Volume List**.



There are twelve tabs in the **Volume Properties** window.

- **Identity**: Displays the **Customer-ID**, **Media-ID** and **Volume-ID** for the selected **Volume**.
- **Target Location**: Displays the Repository and **Slot** that a **Volume** is moving to if it is in a **Move**. If a **Volume** is not in a **Move**, this will be the same as the Current Location.
- **Current Location**: Displays the **Repository** and **Slot** where a Volume was last confirmed. If a **Volume** is not in a **Move**, this will be the **Repository** where the **Volume** should physically be.
- **Scanned Location**: Displays the **Repository** and **Slot** where a **Volume** was last scanned or confirmed. If a **Volume** is not in a **Move**, this will be the **Repository** that the **Volume** is from.

- **Notes:** Displays Notes about the selected **Volume**.
- **History:** Displays all transactions that have occurred with the selected **Volume**, including Date, Time, **Repository** moved from, and **Repository** moved to.
- **Datasets:** Displays a list of Datasets associated with the selected **Volume**.
- **Attributes:** Used to set **Attributes** for a selected **Volume**.
- **VeriScore™:** Displays VeriScore™ information for each **Volume**.
- **DR Strategies:** Displays which **Disaster Recovery Strategies** a **Volume** is associated with.
- **Options:** Provides a list of configuration options for each **Volume**.
- **Catalog:** Displays Catalog information.

From:

<https://rtfm.tapetrack.com/> - **TapeTrack Documentation**

Permanent link:

[https://rtfm.tapetrack.com/master/volume\\_properties\\_window](https://rtfm.tapetrack.com/master/volume_properties_window)

Last update: **2025/01/21 22:07**

