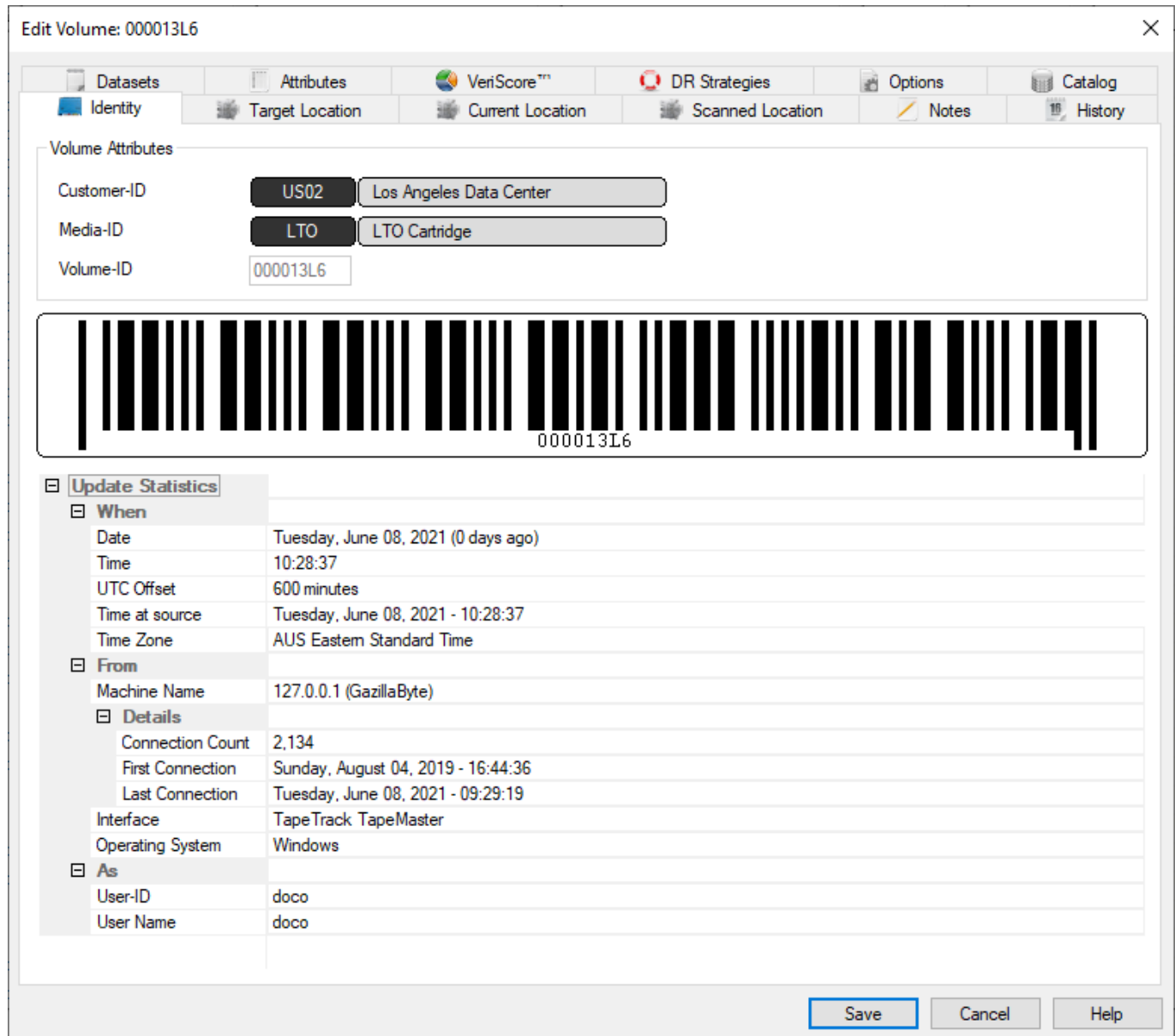


Volume Properties Window

The **Volume Properties Window** contains information and administrative controls for each individual **Volume**. It can be accessed by right-clicking on a **Volume** in the **Volume List** and selecting Properties or by double-clicking a **Volume** in the **Volume List**.



There are twelve tabs in the Volume Properties Window.

1. **Identity**: Displays the **Customer-ID**, **Media-ID** and **Volume-ID** for the selected **Volume**.
2. **Target Location**: Displays the **Repository** and **Slot** that a **Volume** is moving to if it is in a **Move**. If a **Volume** is not in a **Move**, this will be the same as the **Current Location**.
3. **Current Location**: Displays the **Repository** and **Slot** where a **Volume** was last confirmed. If a **Volume** is not in a **Move**, this will be the **Repository** where the **Volume** should physically be.
4. **Scanned Location**: Displays the **Repository** and **Slot** where a **Volume** was last scanned or confirmed. If a **Volume** is not in a **Move**, this will be the **Repository** that the **Volume** is from.
5. **Notes**: Displays **Notes** about the selected **Volume**.
6. **History**: Displays all transactions that have occurred with the selected **Volume**, including **Date**, **Time**, **Repository** moved from, and **Repository** moved to.

7. **Datasets**: Displays a list of Datasets associated with the selected **Volume**.
8. **Attributes**: Used to set **Attributes** for a selected **Volume**.
9. **VeriScore™**: Displays VeriScore™ information for each **Volume**.
10. **DR Strategies**: Displays which **Disaster Recovery Strategies** a **Volume** is associated with.
11. **Options**: Provides a list of configuration options for each **Volume**.
12. **Catalog**:

From:

<https://rtfm.tapetrack.com/> - **TapeTrack Documentation**

Permanent link:

https://rtfm.tapetrack.com/master/volume_properties_window?rev=1526006760

Last update: **2025/01/21 22:07**

