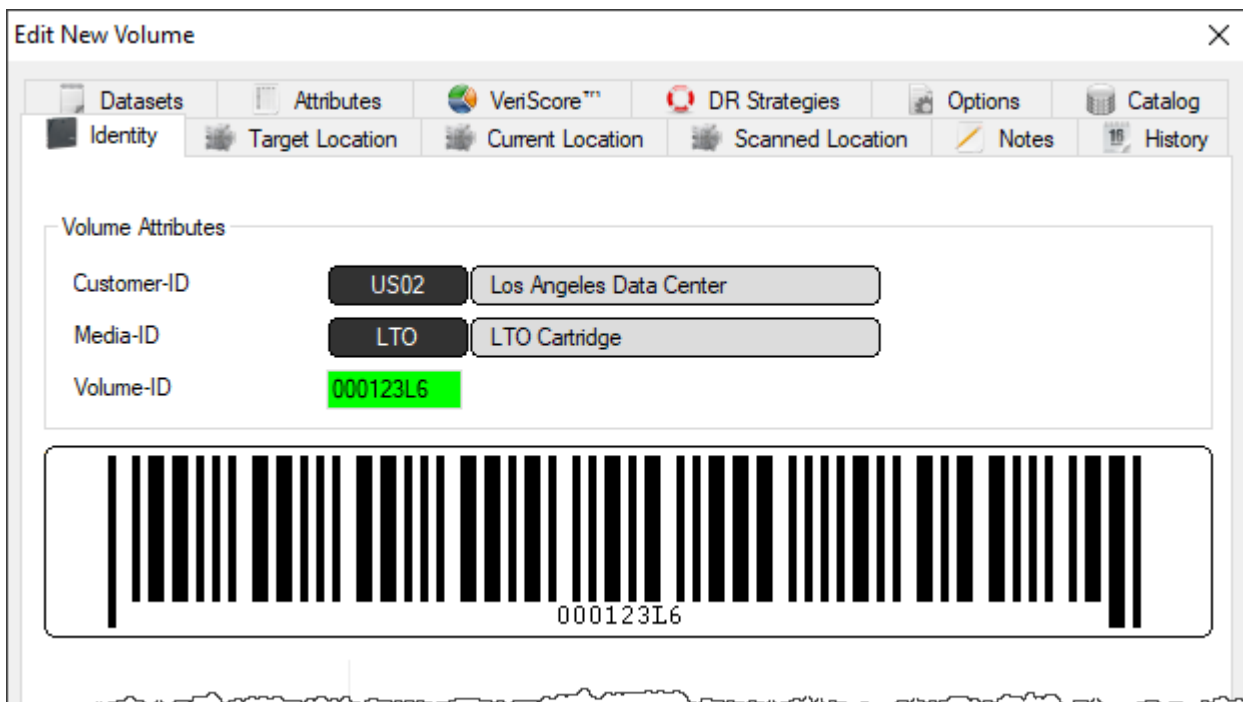
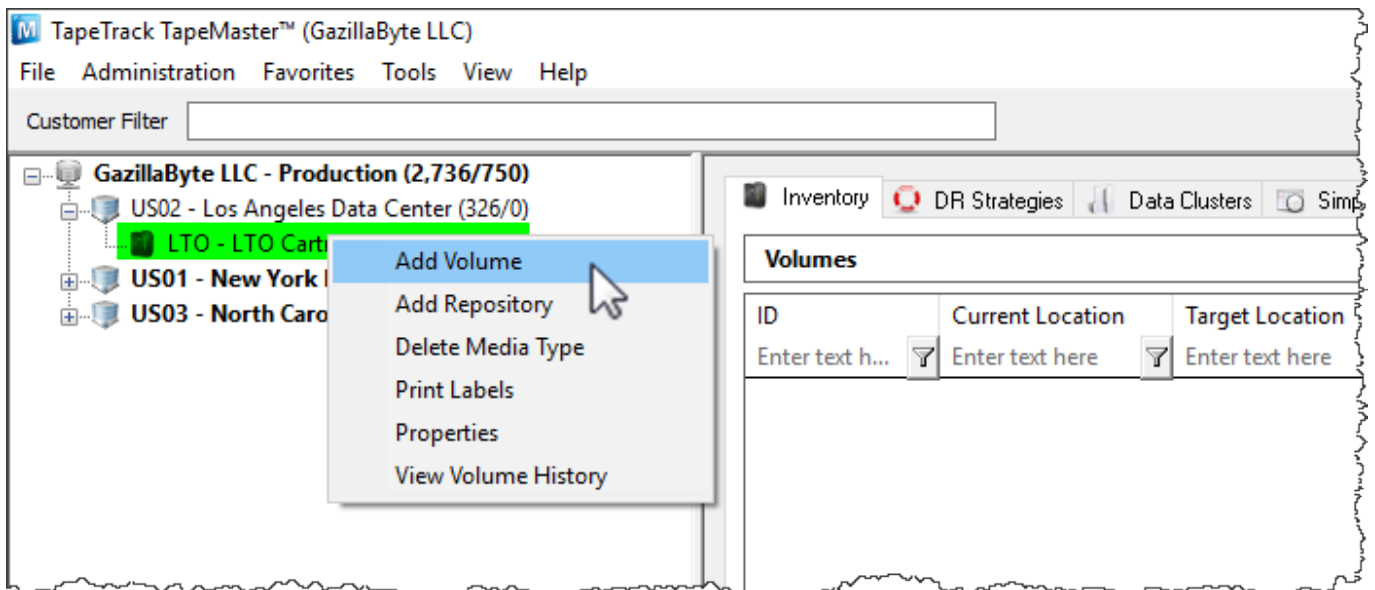


Adding and Deleting Volumes

Adding Volumes

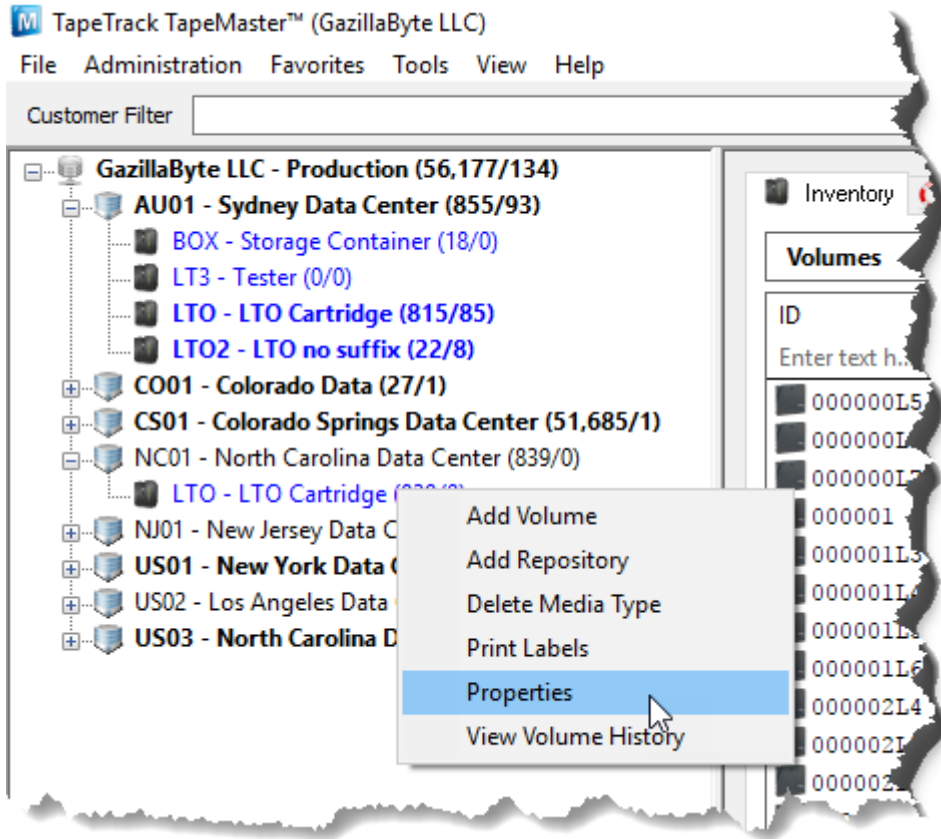
Method 1

To add a Volume, right-click on a Media Type and select “Add Volume” or press **Insert** on the keyboard when viewing the Volume List. Insert the volume ID of the new volume to be added and click Save.



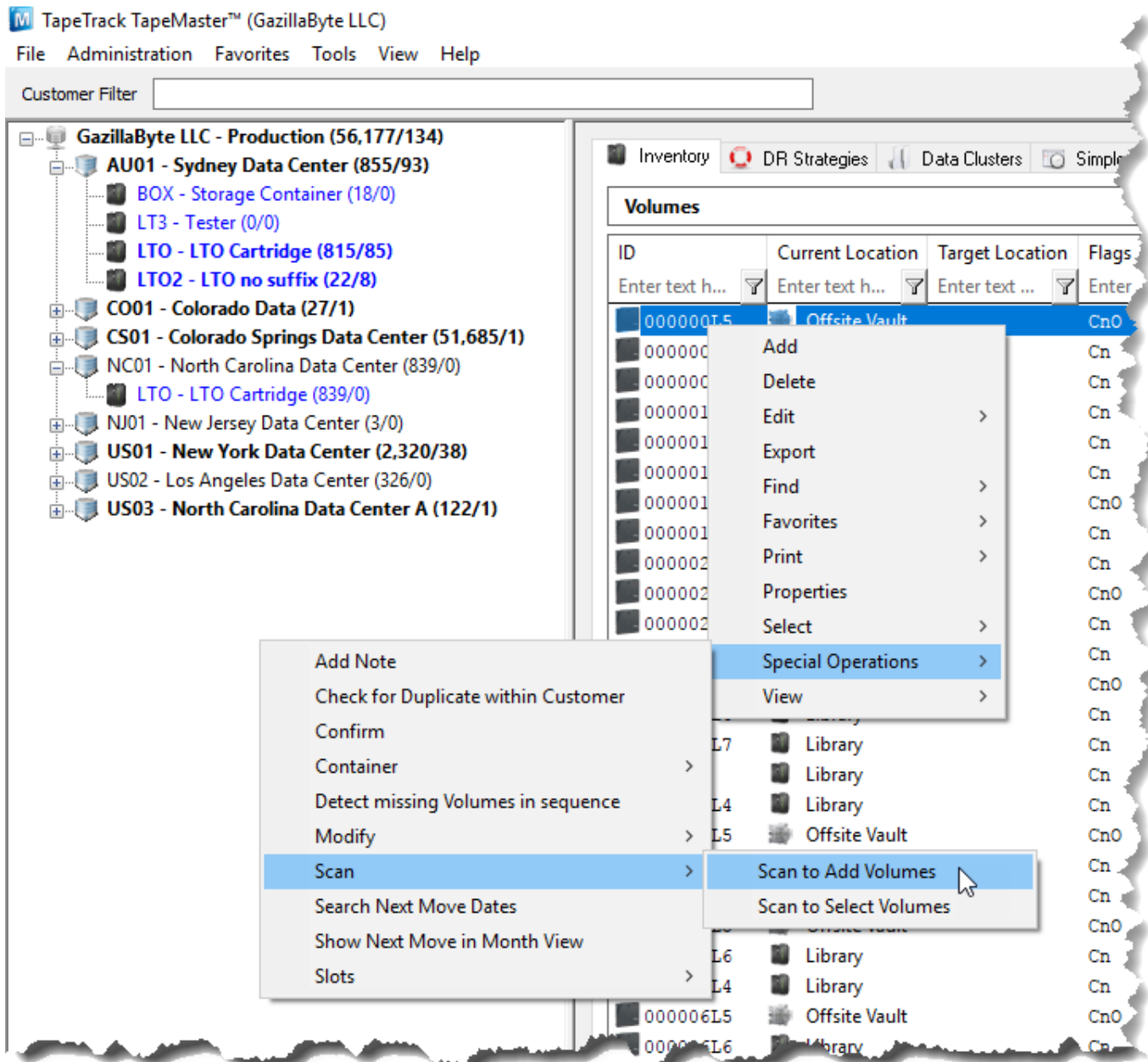
Method 2

Utilize the Volume Serial Building tool located in the Media Type Properties Window.



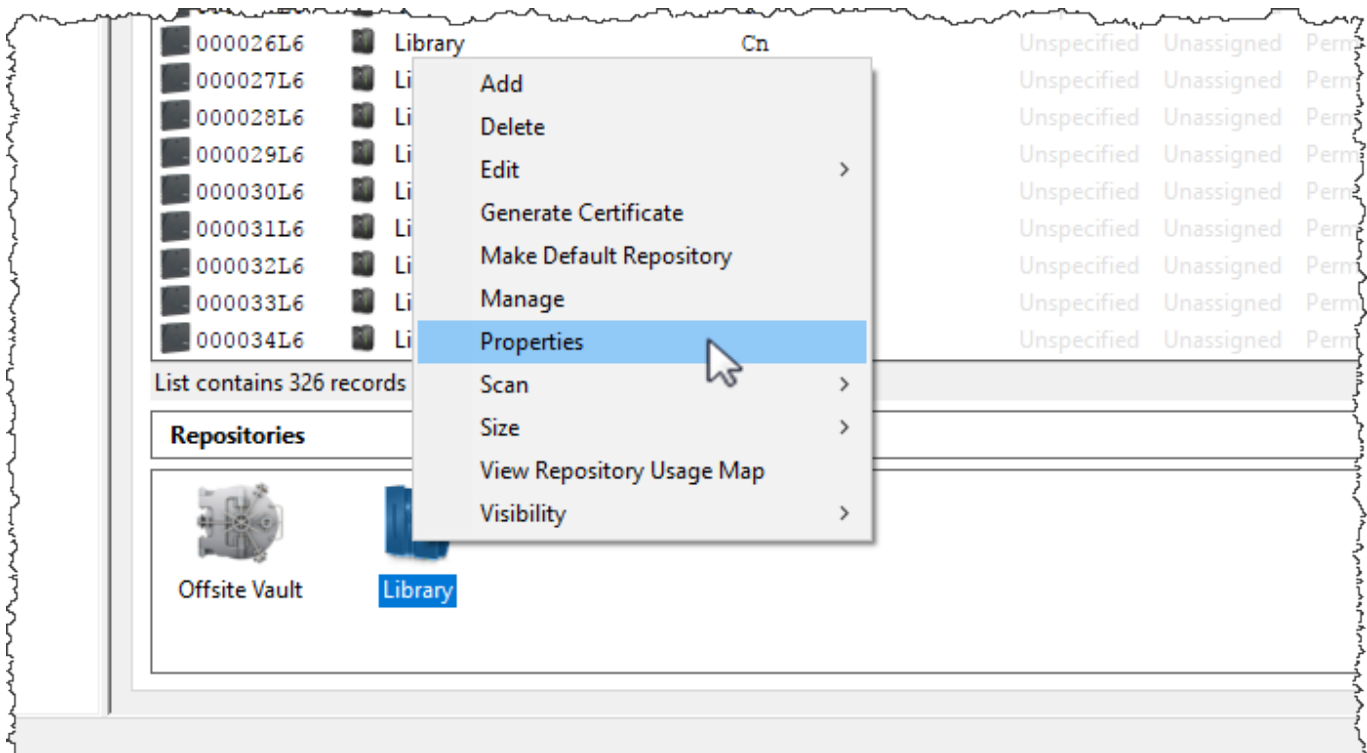
Method 3

Right-Click in the Volume List, navigate to Special Operations, and select "Scan to Add Volumes" to use a Barcode scanner to add Volumes.




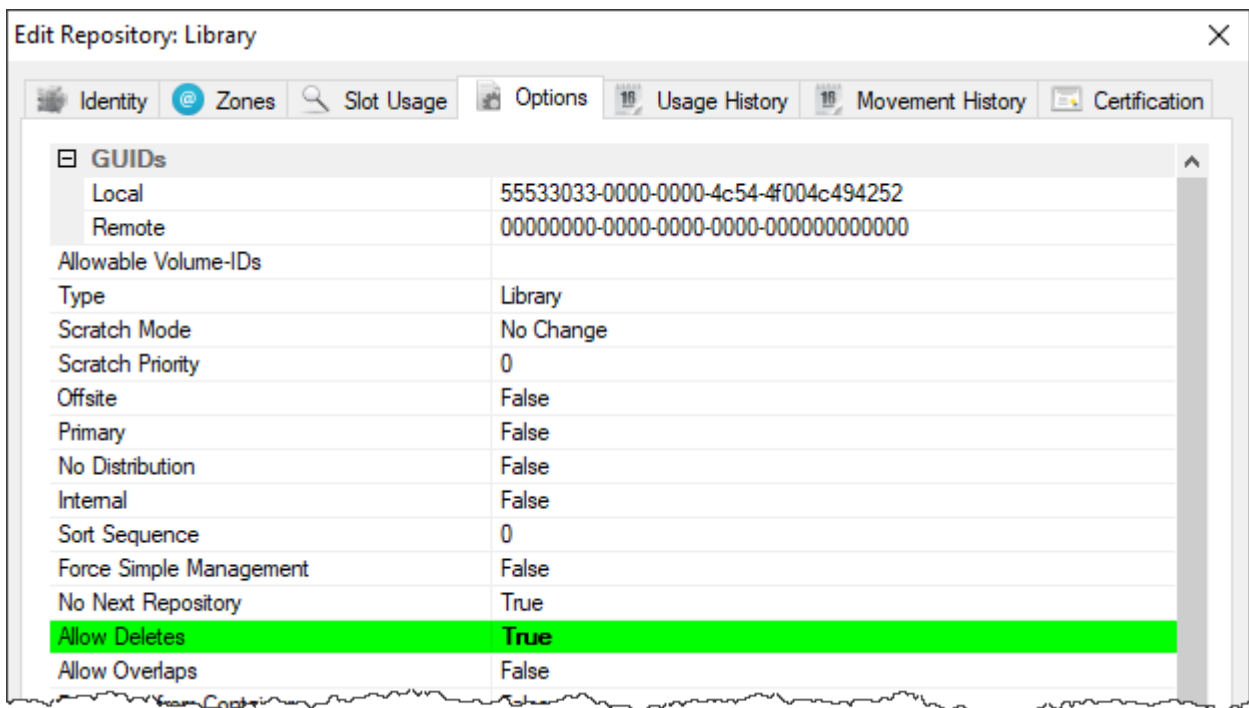
Deleting Volumes

To delete a Volume Allow Deletes must be set to True for the repository the relevant Volume is residing in. To enable this right click on the Repository and select Properties



Under the Options tab, set **Allow Deletes** to True and Save.

 Set **Allow Deletes** back to False when finished removing required volumes to stop accidental deletion of any other volumes.




Select a volume or range select a group of volumes. Right-click and select Delete. A Delete Confirmation window will be displayed. Select Delete this Item or The volume will now be deleted from the database.

To delete multiple Volumes, select the volumes in the Volume List, Right-click, and select Delete Volume. Then select Delete All Items.

The screenshot shows the 'Volumes' section of the TapeTrack application. At the top, there are navigation tabs for 'Inventory', 'DR Strategies', 'Data Clusters', 'Simple Management', and 'Uploaded Files'. Below these, the current context is 'Nashville Data Center LTO Cartridge'. A table lists volume information with columns: ID, Current Location, Target Location, Flags, Move Time, Due in, Container, and Next Move. A context menu is open over the first row, with 'Delete' highlighted. The table data is as follows:

| ID | Current Location | Target Location | Flags | Move Time | Due in | Container | Next Move |
|----------|------------------|-----------------|--------|-------------|-------------|------------|-----------|
| 000001.3 | Library | | CnN | | Unspecified | Unassigned | Permaner |
| 00 | | brary | CDMnNt | D1:01:06:49 | Unspecified | Unassigned | Tuesday, |
| 00 | | | CnNtZ | | Unspecified | Unassigned | Permaner |
| 00 | | | CnNtZ | | Unspecified | Unassigned | Permaner |
| 00 | | brary | CMnNtZ | D4:03:08:46 | Unspecified | Unassigned | Permaner |
| 00 | | | CnN | | Unspecified | Unassigned | Permaner |
| 00 | | | CnNt | | Unspecified | Unassigned | Permaner |
| 00 | | | CnNOT | | Unspecified | Unassigned | Permaner |
| 00 | | | CnNOT | | Unspecified | Unassigned | Permaner |
| 00 | | brary | CMnNZ | D4:03:08:46 | Unspecified | Unassigned | Permaner |
| 00 | | brary | CMnZ | D4:03:08:46 | Unspecified | Unassigned | Permaner |
| 00 | | brary | CMnZ | D4:03:08:46 | Unspecified | Unassigned | Permaner |
| 00 | | brary | CMnZ | D4:03:08:46 | Unspecified | Unassigned | Permaner |
| 00 | | brary | CMnZ | D4:03:08:46 | Unspecified | Unassigned | Permaner |

 If a deleted Volume is added back in to the database, all it's history will remain.

From:
<https://rtfm.tapetrack.com/> - **TapeTrack Documentation**

Permanent link:
<https://rtfm.tapetrack.com/master/volumes?rev=1505698282>

Last update: **2025/01/21 22:07**

