

Adding and Maintaining Volumes

Adding Individual Volumes

To add a [Volume](#) either:

- Right-click on a [Media Type](#) and select Add Volume.

The screenshot displays the TapeTrack TapeMaster™ (GazillaByte) application window. The interface includes a menu bar (File, Administration, Favorites, Tools, View, Help) and a Customer Filter input field. The main area is divided into several sections:

- Left Panel:** A tree view showing the hierarchy of data centers and tape libraries, including "GazillaByte - Production", "US00 - United State", "US01 - New York", "US02 - Los Angeles", "CONT - Cont...", "LTO - LTO Ca", and "US03 - North Ca".
- Top Bar:** Navigation tabs for "Inventory", "DR Strategies", "Data Clusters", "Simple Management", and "Uploaded Files".
- Volumes Table:** A table with columns for ID, Current Location, Target Location, Next Move, and Description. The table is filtered to show "Los Angeles Data Center" and "LTO Cartridge". The table contains 13 rows of volume data.
- Summary:** A bar at the bottom of the table area shows "Total Items: 1,589", "Total Selected: 1", and "First Selection: 13".
- Repositories:** A section below the table showing three repository types: "Gemtrac", "Library", and "Offsite Vault", each with a corresponding icon.

At the bottom right of the window, a status bar indicates "Connection 127.0.0.1 uses AES 256 bit encryption".

- Right-click in the Inventory window and select Add.



- Click in the Inventory window and press Insert on the keyboard

This will open the Edit New Volume window.

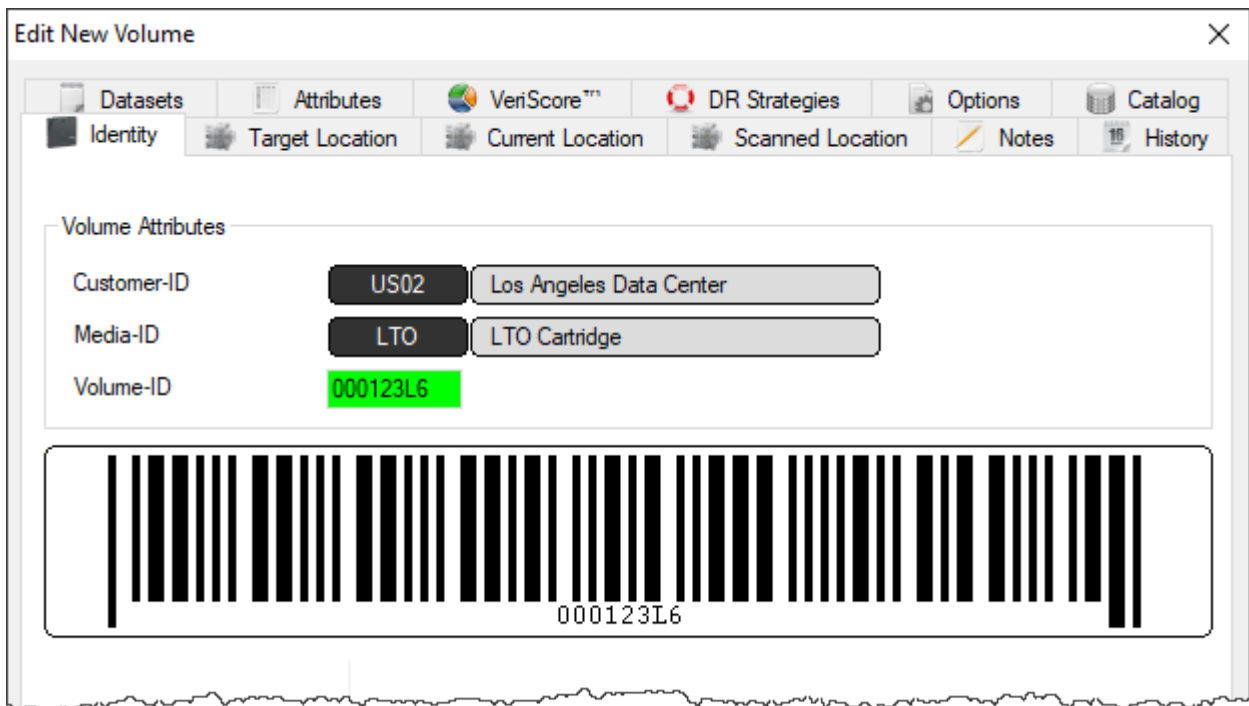
In the Edit New Volume window enter the Volume-ID of the new Volume to be added. Volume-ID's must be unique within a Customer/Media Type scope and must be between 1 and 10 alphanumeric characters long.

Volume Attributes

Customer-ID	US02	Los Angeles Data Center
Media-ID	LTO	LTO Cartridge
Volume-ID		

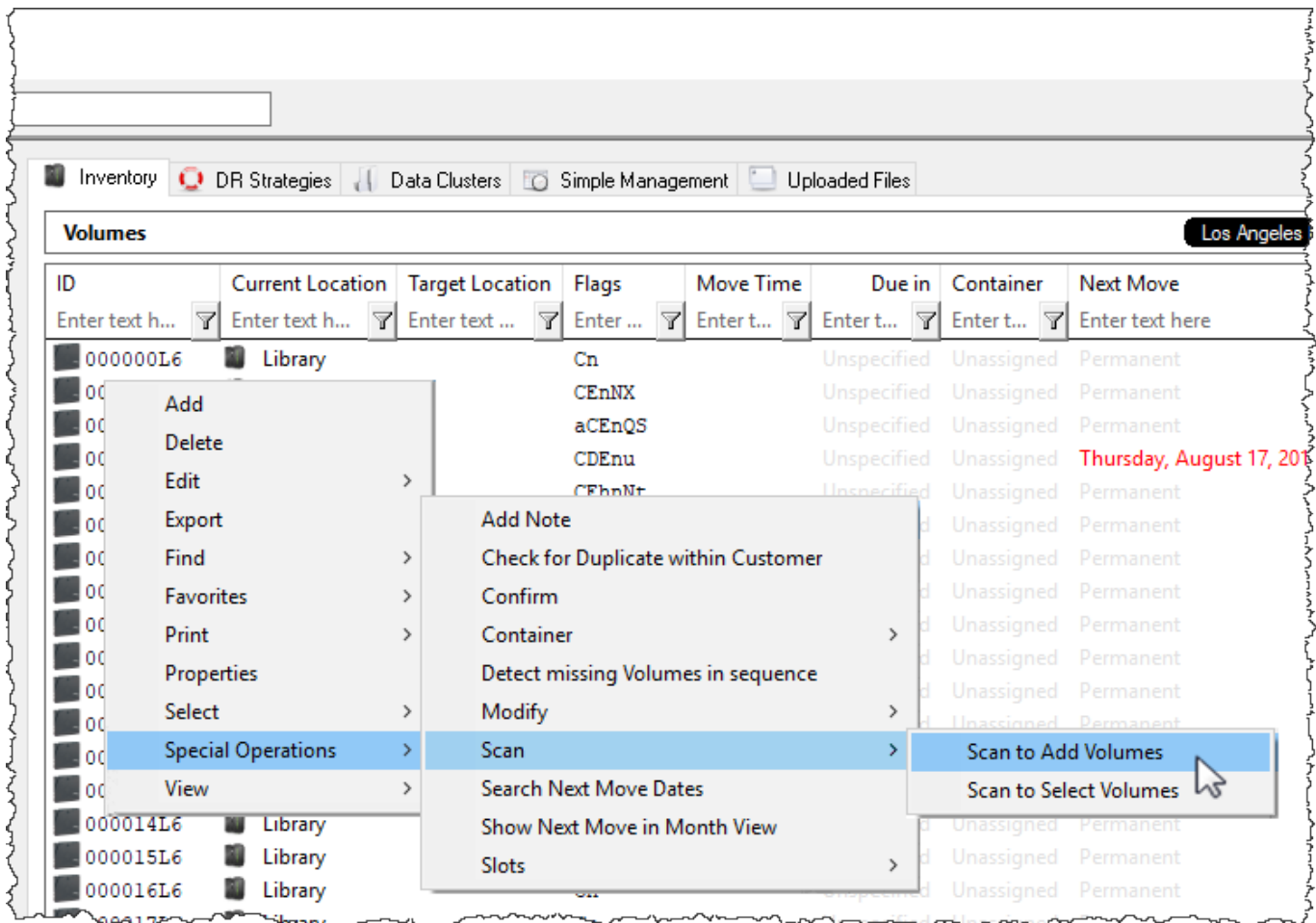
Save Cancel Help

Click Save to add [Volume](#).

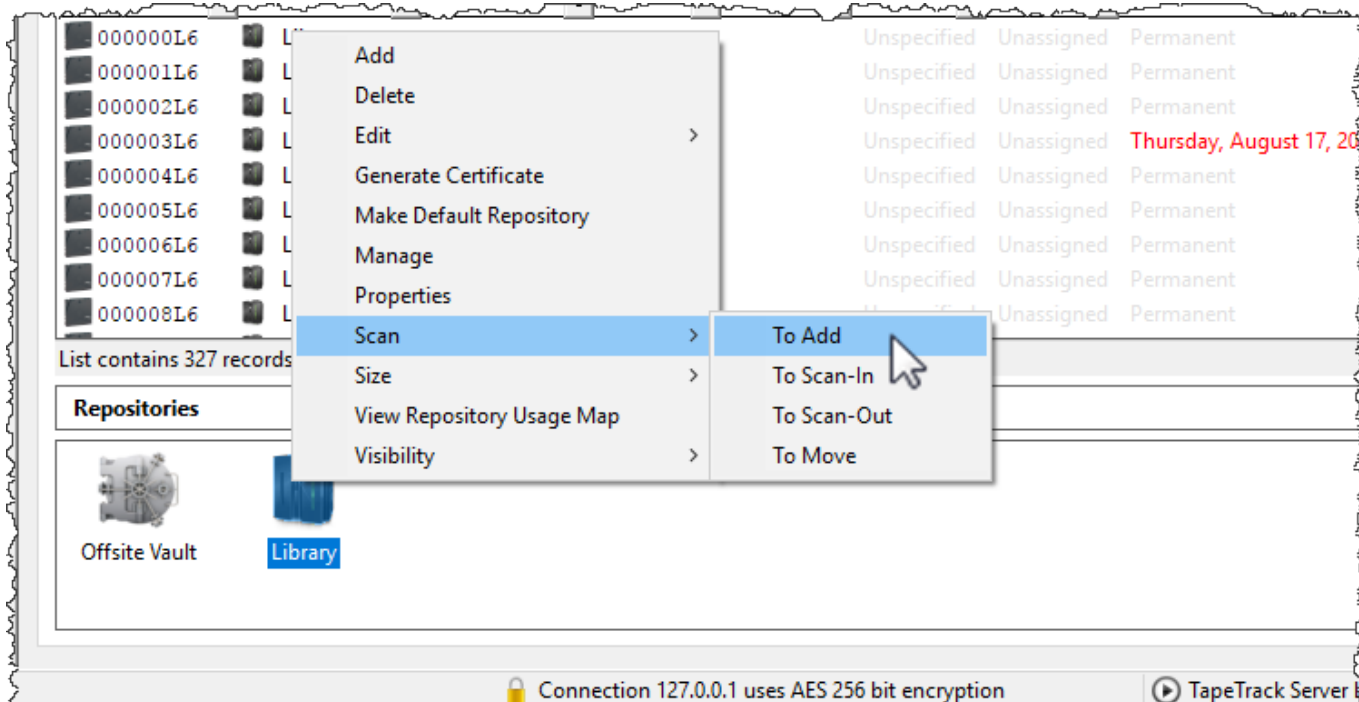


Scan to Add Volumes

Right-Click in the Volume List, navigate to Special Operations, and select Scan → Scan to Add Volumes to use a Barcode scanner to add Volumes to your default Repository.



To add **Volumes** to a **Repository** other than your default, right-click the required **Repository** and select **Scan → To Add** and scan **Volumes** to be added.

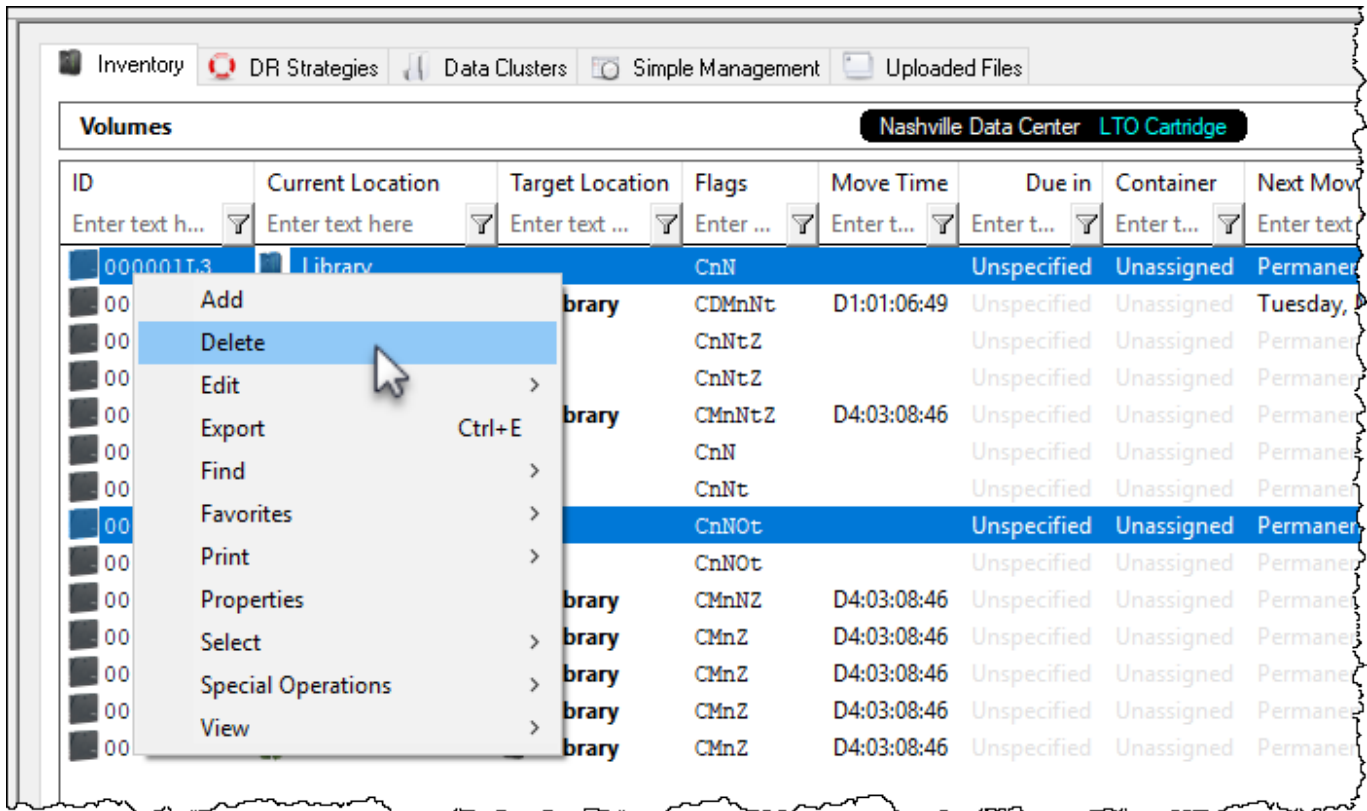


Deleting Volumes


 You must have **Alter** rights to delete **Volumes**

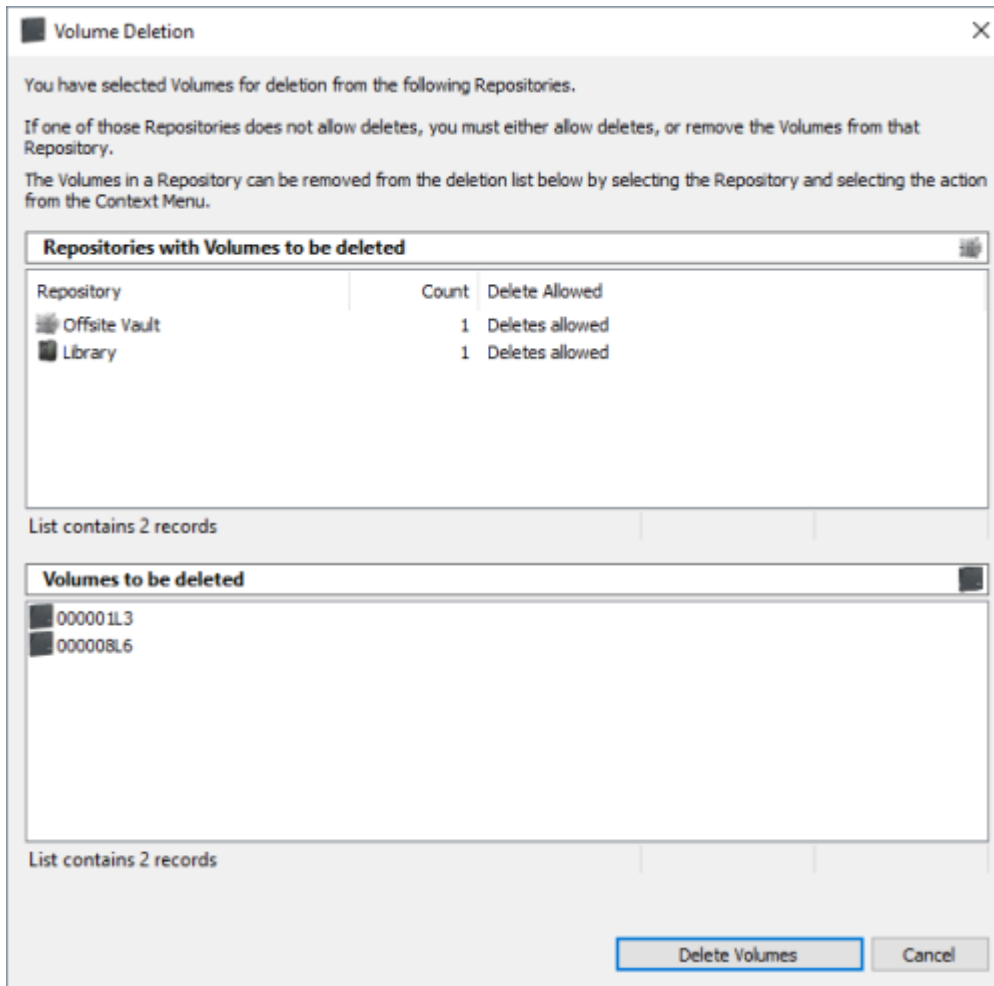
Select the required **Volume** , or range of **Volumes** from the inventory window you want to delete.

Right-click highlighted **Volumes** and select **Delete**, or press **Delete (DEL)** on the keyboard.



The **Volume Deletion** window will display the **Repository** where the **Volumes** to be deleted are located in the top pane and **Volume-ID's** in the lower pane.

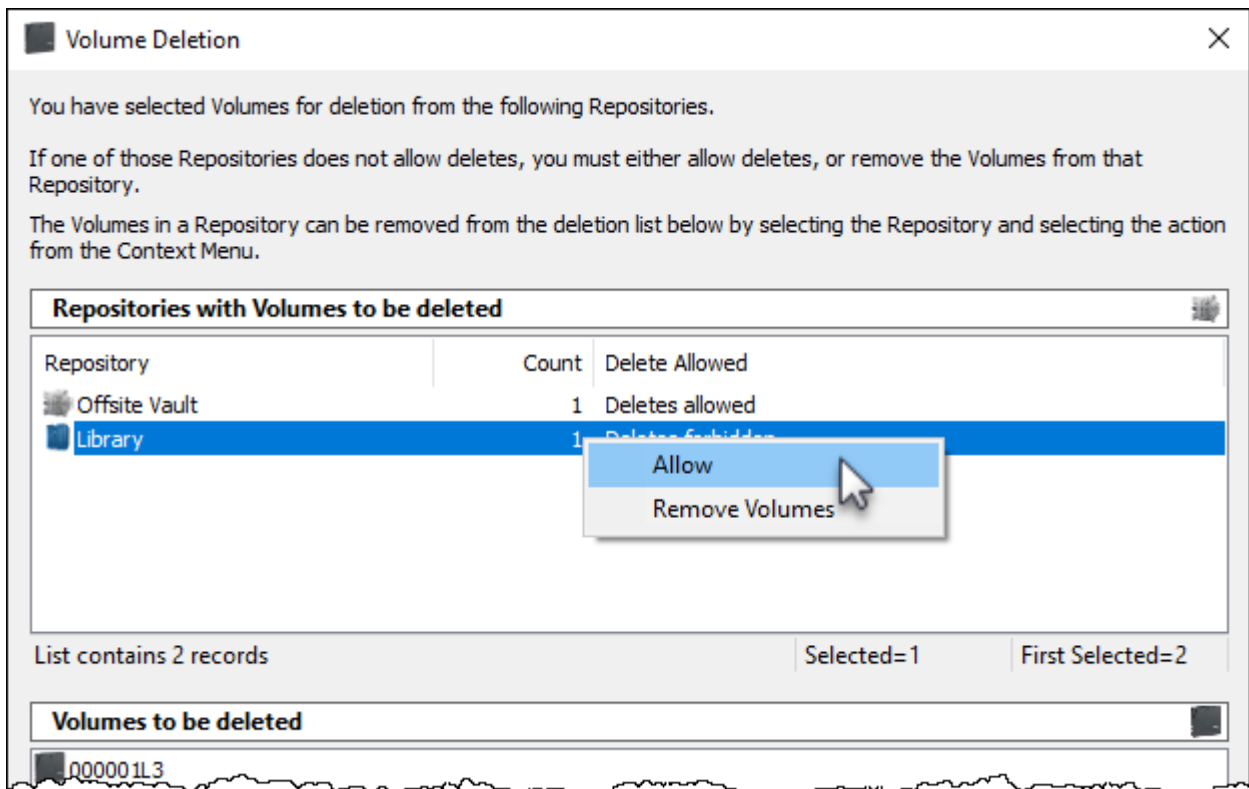
 If the **Volume Deletion** window is not displayed it is because you are running an outdated version of TapeMaster. Instructions to delete **Volumes** in older versions of TapeMaster can be found [here](#)



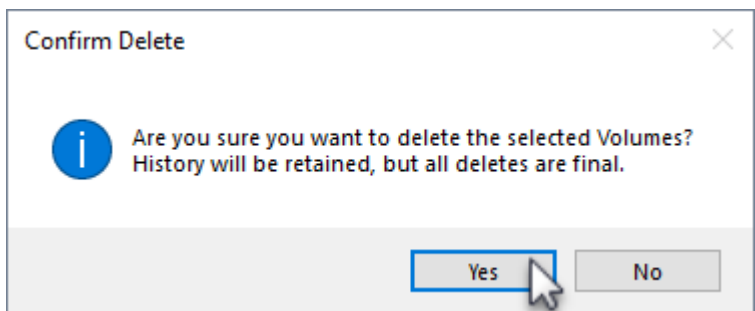
Each row in the top pane will, along with the [Repository Description](#) (or ID), list the number of [Volumes](#) for deletion and the delete status of either **Deletes Allowed** or **Deletes Forbidden**.

For any [Repository](#) listed with a status of **Deletes Forbidden** you must either:

- Right-clicking the row and selecting **Allow** to change status to **Deletes Allowed**
- Right-clicking the row and selecting **Remove** to remove the [Volumes](#) before deletion of any [Volumes](#) located in a [Repository](#) with **Deletes Allowed** status.

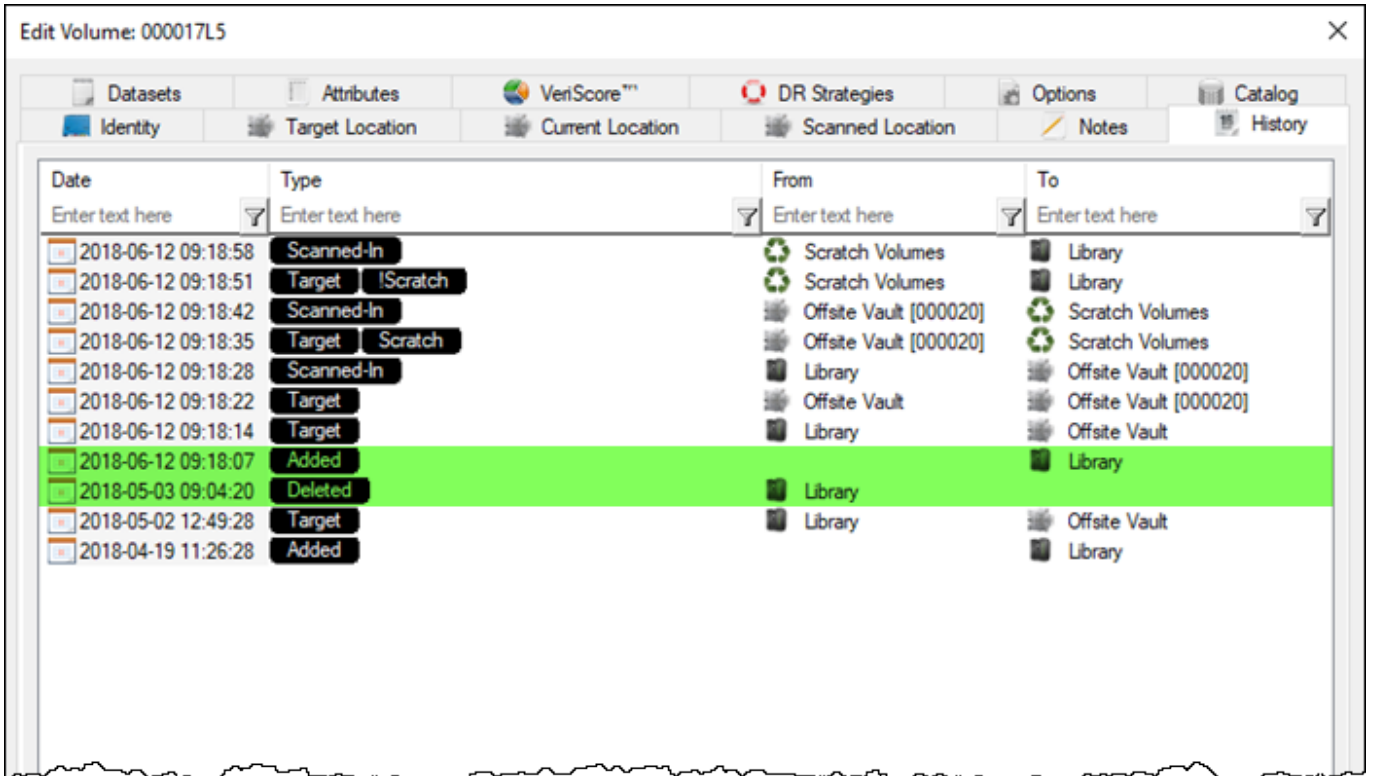


Click **Delete Volumes** and **Yes** to the delete confirmation to delete the **Volumes**.

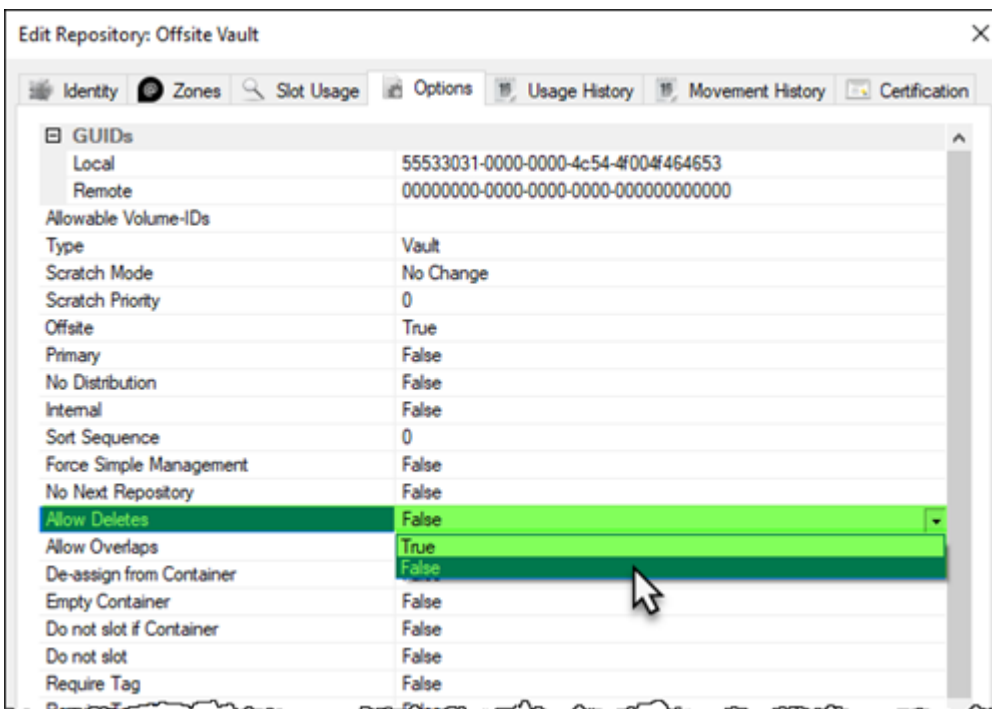


As deleting **Volumes** is permanent, clicking **No** to the delete confirmation is your last opportunity to cancel the delete function.

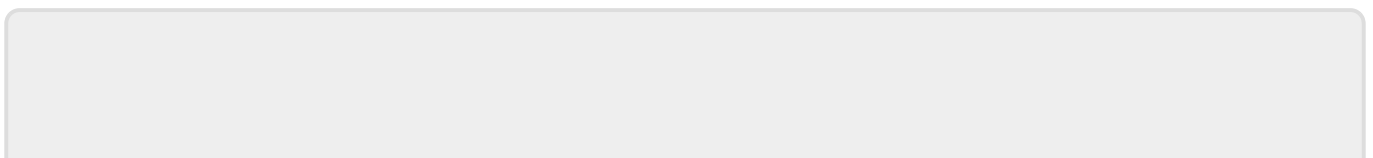
When a **Volume** is deleted its historical entries remain in the database. If a deleted **Volume** is added back into the database, all previous history records including when deleted and added back, are listed under that **Volumes History** tab.



As setting **Repository** to **Allow Deletes** alters the properties of that **Repository**, if required, reset the **Repository** to **no deletes** by right-clicking the required **Repository**, selecting **Properties** and change the **Allow Deletes** field in the **Options** tab to **false**.



See [Special Operations Menu](#) for further information.



From:

<https://rtfm.tapetrack.com/> - **TapeTrack Documentation**

Permanent link:

<https://rtfm.tapetrack.com/master/volumes?rev=1627951458>

Last update: **2025/01/21 22:07**

