

Adding and Maintaining Volumes

Adding Individual Volumes

To add a [Volume](#) either:

- Right-click on a [Media Type](#) and select Add Volume.

The screenshot displays the TapeTrack TapeMaster™ (GazillaByte) application window. The interface includes a menu bar (File, Administration, Favorites, Tools, View, Help) and a Customer Filter input field. The main area is divided into several sections:

- Left Panel:** A tree view showing the hierarchy of data centers and tape libraries, including "GazillaByte - Production", "US00 - United State", "US01 - New York", "US02 - Los Angeles", "CONT - Cont...", "LTO - LTO Ca", and "US03 - North Ca".
- Inventory Window:** A table titled "Volumes" for the "Los Angeles Data Center" and "LTO Cartridge". The table has columns for ID, Current Location, Target Location, Next Move, and Description. The data rows show various tape IDs (e.g., 000006L6, 000008L6, etc.) and their current locations (Library or Offsite Vault).
- Summary:** Below the table, it shows "Total Items: 1,589", "Total Selected: 1", and "First Selection: 13".
- Repositories:** A section at the bottom showing three repository types: Gemtrac, Library, and Offsite Vault, each with a corresponding icon.

At the bottom right of the window, a status bar indicates "Connection 127.0.0.1 uses AES 256 bit encryption".

- Right-click in the Inventory window and select Add.



- Click in the Inventory window and press Insert on the keyboard

This will open the Edit New Volume window.

In the Edit New Volume window enter the Volume-ID of the new Volume to be added. Volume-ID's must be unique within a Customer/Media Type scope and must be between 1 and 10 alphanumeric characters long.

Volume Attributes

| | | |
|-------------|------|-------------------------|
| Customer-ID | US02 | Los Angeles Data Center |
| Media-ID | LTO | LTO Cartridge |
| Volume-ID | | |

Save Cancel Help

Click Save to add [Volume](#).

Adding Multiple Volumes

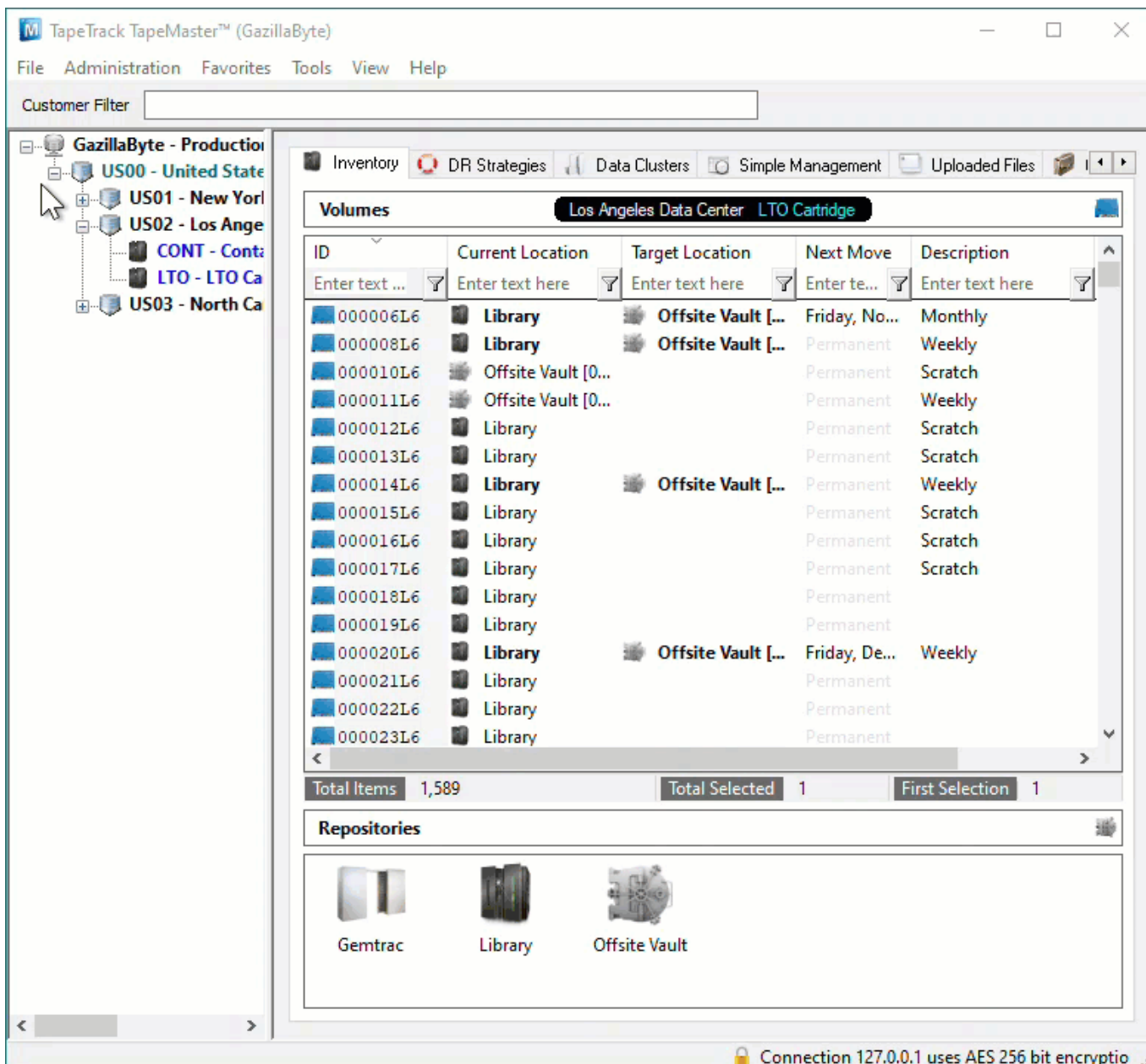
Adding multiple Volumes can be accomplished using several different methods.

- [Scanning Volumes using the "Scan To Add"](#) process, best suited to adding small groups of Volumes with a scanner, keyboard or [GazillaByte CloudScan App](#).
- Pasting in Volumes from Windows Clipboard or file, best suited to adding new Volumes from emailed or file lists of Volume-ID's.
- [Importing Volumes from Excel file](#), best suited to adding Volumes and additional data from Excel sheets.
- [Creating Volumes using the "Volume-ID Building" tool](#).
- Importing Volumes from your Backup Software with TMSS10Sync.
 - [Backup Exec](#)
 - [Commvault](#)
 - [Data Protector](#)

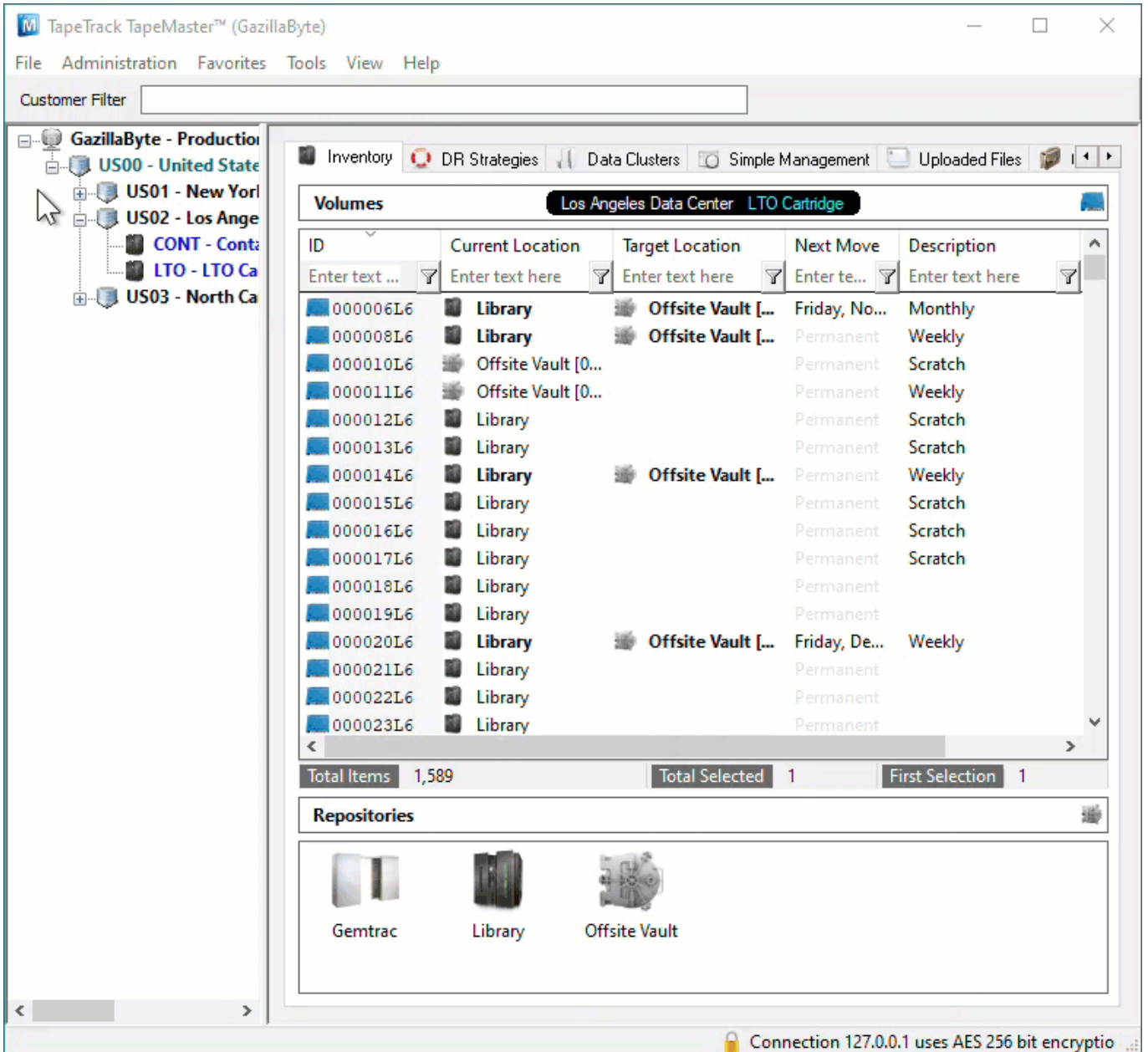
- [Netbackup](#)
- [Networker](#)
- [Tivoli Storage Manager](#)
- [VEEAM](#)

Scan To Add

To add [Volumes](#) to your default [Repository](#) (or Initial [Repository](#) if no default is set) right-click in the Volume List, navigate to Special Operations, and select Scan → Scan to Add Volumes to open the Scan In window.



To add [Volumes](#) to a [Repository](#) other than your default, right-click the required [Repository](#) and select Scan → To Add and scan [Volumes](#) to be added.



Scan your Volume Barcodes using a Barcode scanner to add [Volumes](#) to TapeTrack.

Once all Volumes have been scanned, close the Scan In window by clicking the X at the top right corner.

Deleting Volumes

For information on deleting Volumes see [Deleting Volumes](#)

From: <https://rtfm.tapetrack.com/> - **TapeTrack Documentation**

Permanent link: <https://rtfm.tapetrack.com/master/volumes?rev=1627960495>

Last update: **2025/01/21 22:07**



