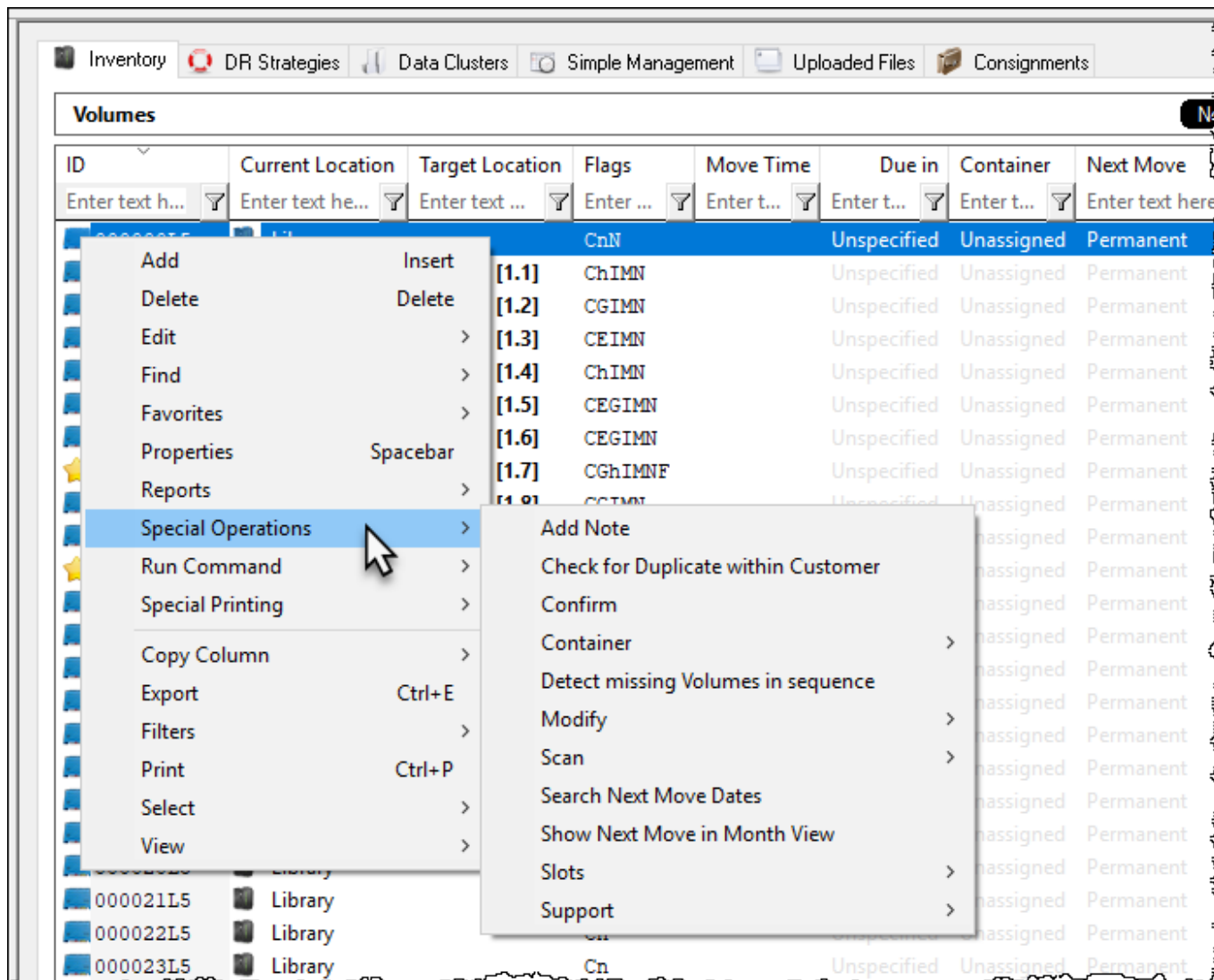


# Special Operations Menu

The **Special Operations Menu** provides advanced functions for [Volumes](#).



## Operations

- **Add Note:** The [Add Note](#) function will launch the [Add Note](#) window.
- **Check for Duplicate within Customer:** The “Check for Duplicate within Customer” will search the current [Customer](#) for [Volumes](#) with the same [Volume-ID](#) as the selected [Volume](#).
- **Confirm:** The “Confirm” operation confirms the selected [Volume](#) at its Target Location when it is in a move.
- **Container:** The Container Menu provides three options:
  - Register: Register will add the designation of “Container” to a Volume.
  - De-Register: De-Register will remove the designation of “Container” from a [Volume](#).
  - Purge: Purge will remove all [Volumes](#) from a Container.
- **Detect missing volumes in a sequence** will scan through the selected [Volumes](#) and list any volume ID's missing from the numerical sequence.
- **Find Duplicate Slots:** The “Find Duplicate Slots” will find [Volumes](#) that have been assigned to the same Slot as another [Volume](#).
- **Modify:** The Modify Menu contains options to:

- Add a [Volume](#) to a Container
- Add a [Volume](#) to a Data Cluster
- Set a Volume's Home Repository
- Modify [Flags](#)
- Modify Return Dates.
- **Scan:** The Scan menu contains options to :
  - **Scan to Add Volumes:** The “Scan to Add Volumes” Function will launch the [Barcode Scanning Window](#) and add the [Volumes](#) being scanned to the selected [Customer](#) and [Media Type](#).
  - **Scan to Select Volumes:** The “Scan to Select Volumes” function will launch the [Barcode Scanning Window](#) and select the [Volumes](#) being scanned in the [Volume List](#).
  - **Search Next Move Dates** opens the Next Move Date Search window. This enables you to search for tapes moving on a certain day or days within the current media.
- **Show Move Dates in Month View:** The Show Move Dates in Month View function will launch a window displaying the [move](#) dates for the selected [Volume\(s\)](#) in a calendar format.
- **Slots**
  - **Find Duplicate Slots** will search the current [Media Type](#) for any slots occupied by multiple [Volumes](#).

From:  
<https://rtfm.tapetrack.com/> - **TapeTrack Documentation**

Permanent link:  
[https://rtfm.tapetrack.com/master/volumes\\_special\\_operations?rev=1513816165](https://rtfm.tapetrack.com/master/volumes_special_operations?rev=1513816165)

Last update: **2025/01/21 22:07**

