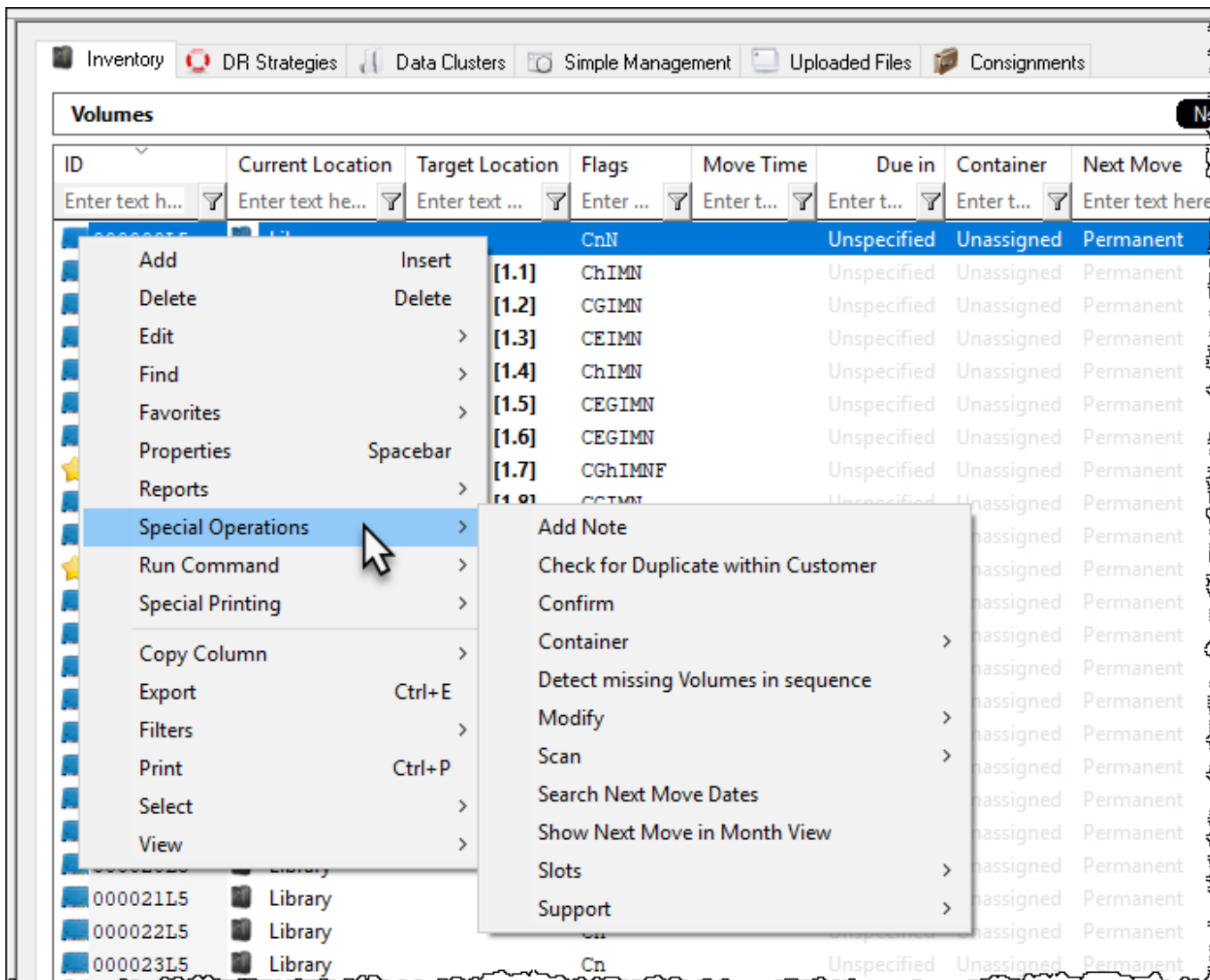


Special Operations Menu

The **Special Operations Menu** provides advanced functions for [Volumes](#).



Operations

- **Add Note:** The [Add Note](#) function will launch the [Add Note](#) window.
- **Check for Duplicate within Customer:** The “Check for Duplicate within Customer” will search the current [Customer](#) for [Volumes](#) with the same [Volume-ID](#) as the selected [Volume](#).
- **Confirm:** The “Confirm” operation confirms the selected [Volume](#) at its Target Location when it is in a move.
- **Container:** The Container Menu provides three options:
 - Register: Register will add the designation of “Container” to a Volume.
 - De-Register: De-Register will remove the designation of “Container” from a [Volume](#).
 - Purge: Purge will remove all [Volumes](#) from a Container.
- **Detect missing volumes in a sequence** will scan through the selected [Volumes](#) and list any volume ID's missing from the numerical sequence.
- **Find Duplicate Slots:** The “Find Duplicate Slots” will find [Volumes](#) that have been assigned to the same Slot as another [Volume](#).
- **Modify:** The Modify Menu contains options to:

- [Add a Volume to a Container](#)
- [Add a Volume to a Data Cluster](#)
- [Set a Volume's Home Repository](#)
- [Modify Flags](#)
- [Modify Return Dates.](#)
- **Scan:** The Scan menu contains options to :
 - **Scan to Add Volumes:** The “Scan to Add Volumes” Function will launch the [Barcode Scanning Window](#) and add the [Volumes](#) being scanned to the selected [Customer](#) and [Media Type](#).
 - **Scan to Select Volumes:** The “Scan to Select Volumes” function will launch the [Barcode Scanning Window](#) and select the [Volumes](#) being scanned in the [Volume List](#).
 - **Search Next Move Dates** opens the Next Move Date Search window. This enables you to search for tapes moving on a certain day or days within the current media.
- **Show Move Dates in Month View:** The Show Move Dates in Month View function will launch a window displaying the [move](#) dates for the selected [Volume\(s\)](#) in a calendar format.
- **Slots**
 - **Find Duplicate Slots** will search the current [Media Type](#) for any slots occupied by multiple [Volumes](#).

From:
<https://rtfm.tapetrack.com/> - **TapeTrack Documentation**

Permanent link:
https://rtfm.tapetrack.com/master/volumes_special_operations?rev=1526346192

Last update: **2025/01/21 22:07**

