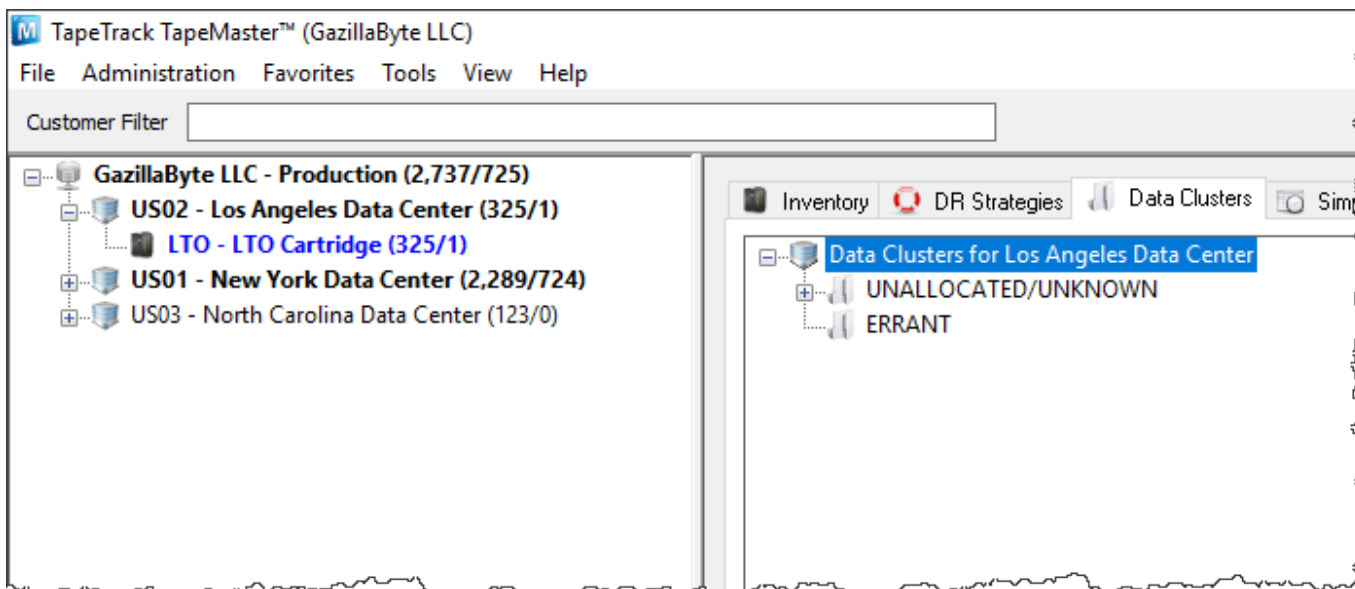


Data Cluster

A Data Cluster is an arbitrary grouping of [Volumes](#) that does not depend on sequential or similar [Volume-IDs](#).

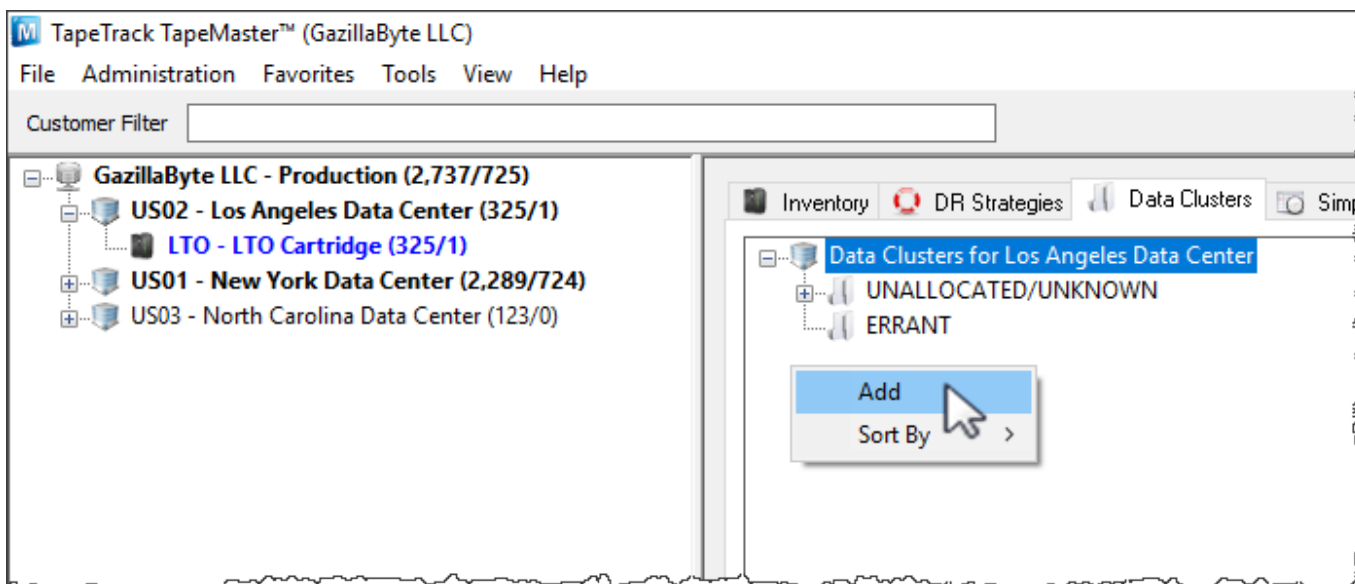
They can be used in combination with [Simple Management Rules](#) to coordinate [Volume](#) movements.



Adding A Data Cluster

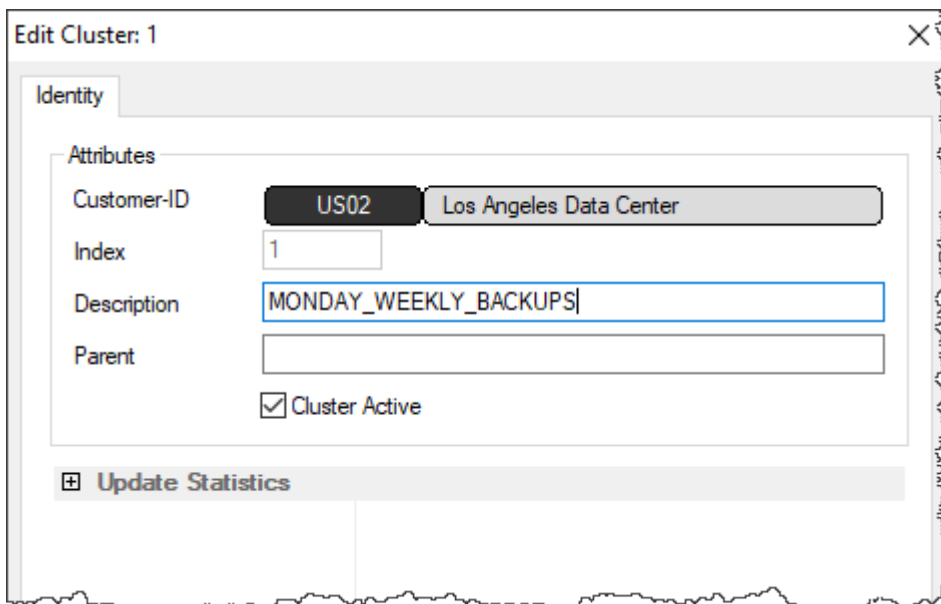
To add a Data Cluster: In TapeMaster, open the Media type of the required [Customer](#) and select the Data Clusters Administrative Tab.

Right-click inside the Data Clusters Administrative Tab and select Add or use the Insert key on the keyboard.



Fill out a brief description of this Data Cluster and, if necessary, insert a Parent Data Cluster for this

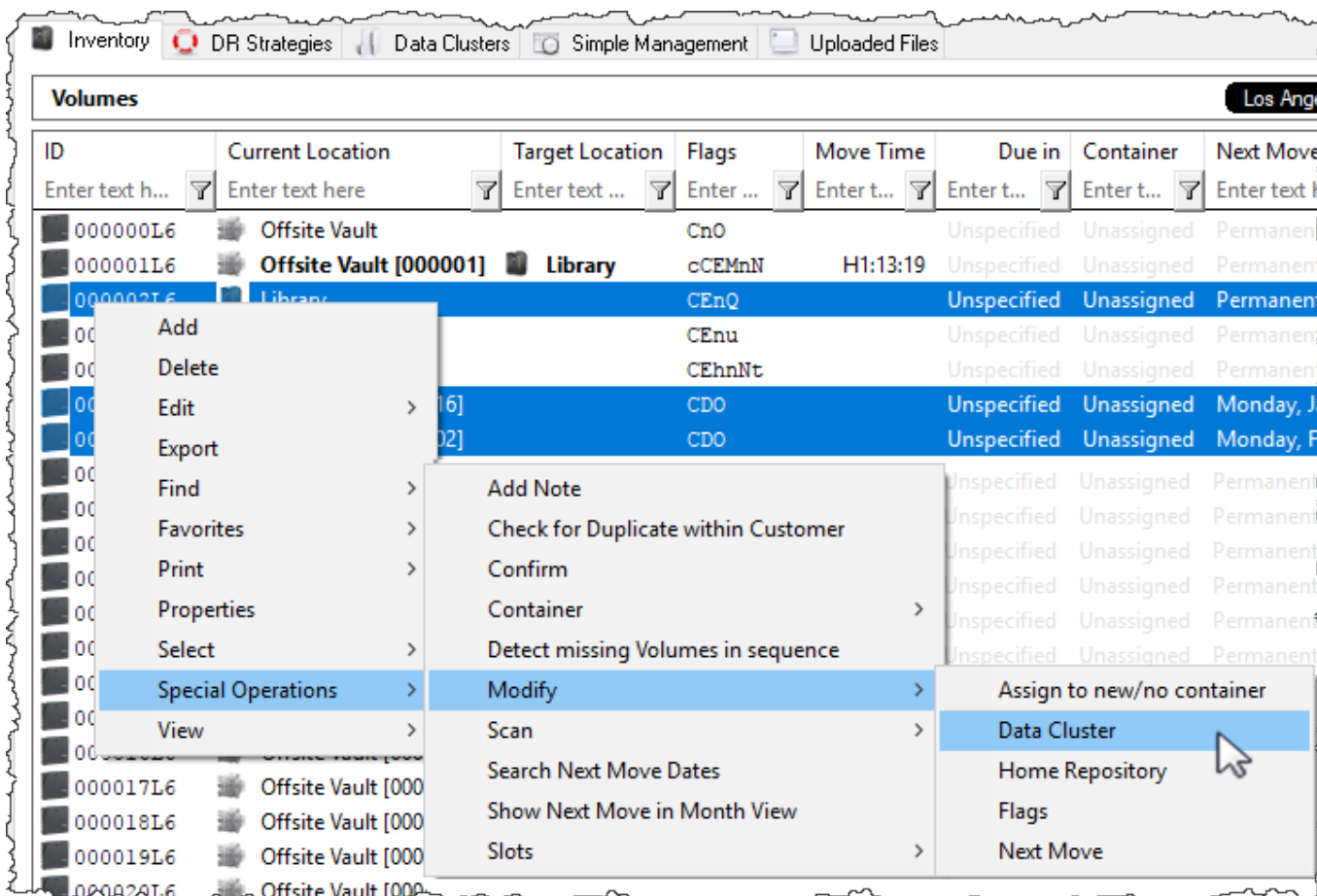
Data Cluster to be nested under.



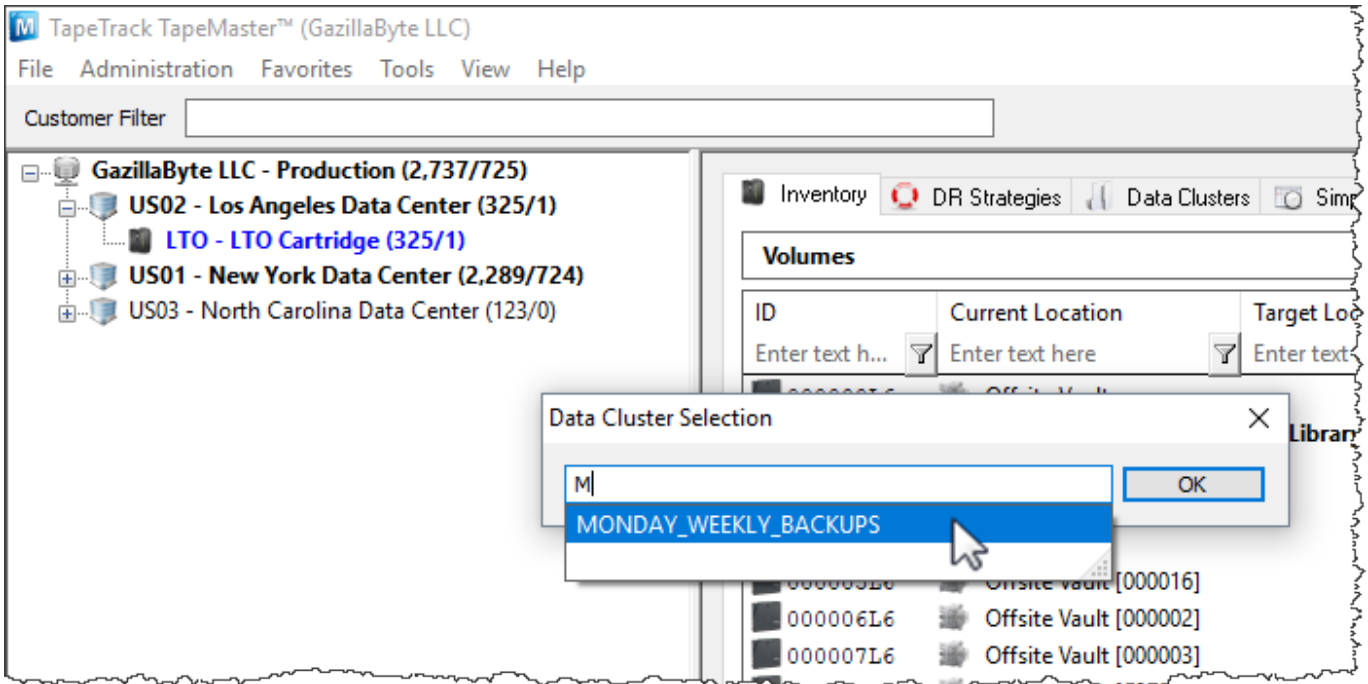
Add Volumes to the Data Cluster.

Adding Multiple Volumes

From the Inventory tab of the required Customers media type: Select the Volumes in the Volume List. Right-click, select Special Operations → Modify → Data Cluster.



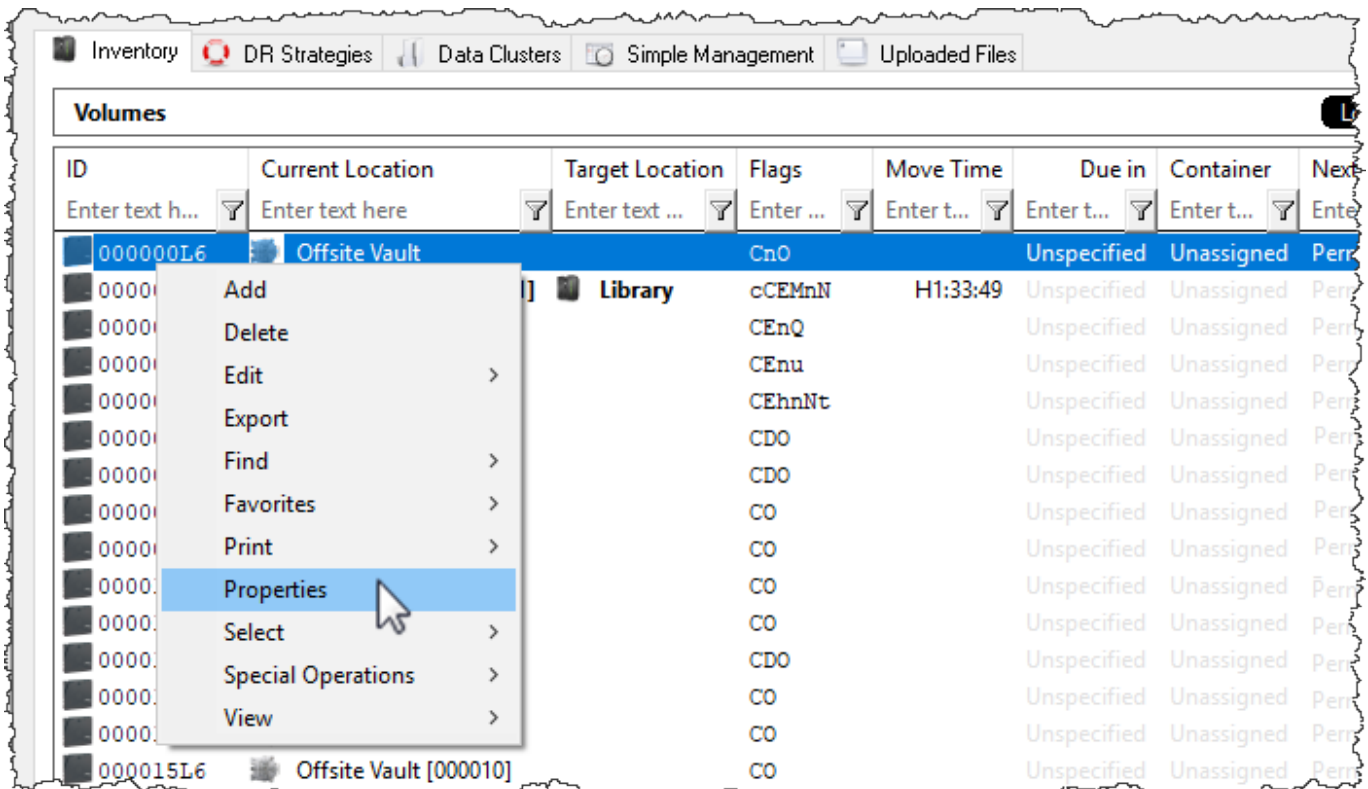
In the Data Cluster Selection window type in the Data Cluster that these Volumes should be associated with, and select from the clusters in the displayed list.



Click OK to save.

Adding Single Volume

Double-click or Right-Click and select Properties on a Volume in the Volume List to launch the Volume Properties Window.



Select the Options tab. At the top will be a field called **Data Cluster** with a drop down menu. Select the Data Cluster to associate this Volume with and click Save.



From:
<https://rtfm.tapetrack.com/> - **TapeTrack Documentation**

Permanent link:
https://rtfm.tapetrack.com/object/data_cluster?rev=1509728846

Last update: **2025/01/21 22:07**

