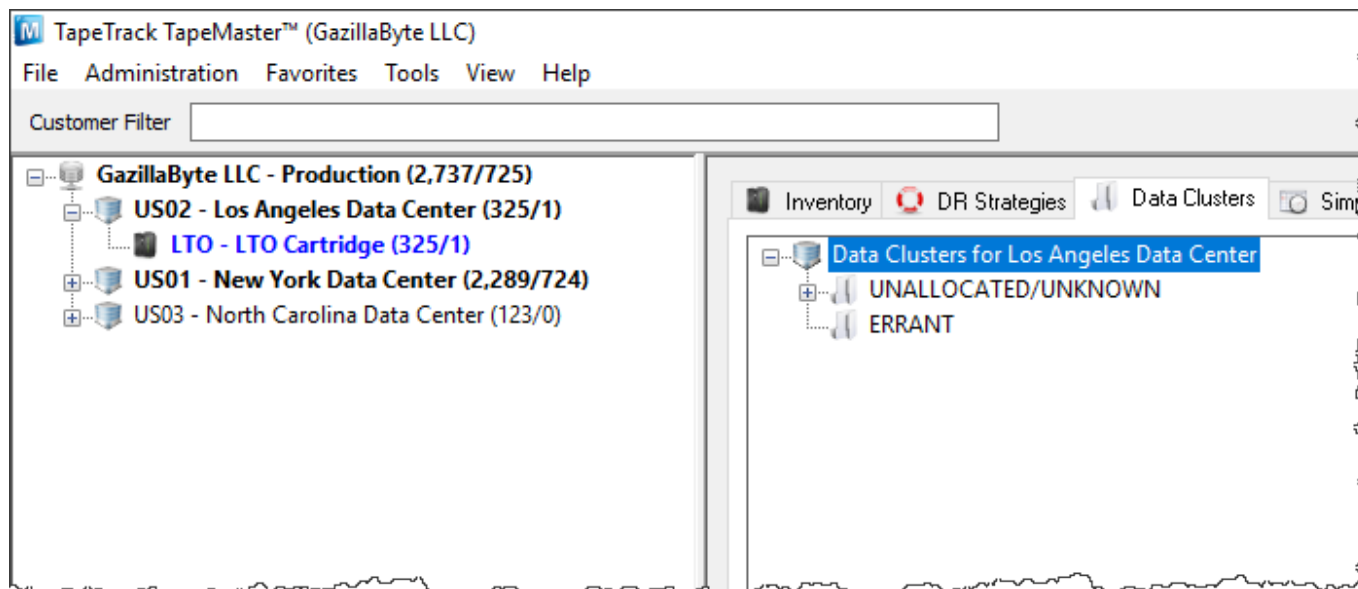


Data Cluster

A Data Cluster is an arbitrary grouping of [Volumes](#) that does not depend on sequential or similar [Volume-IDs](#).

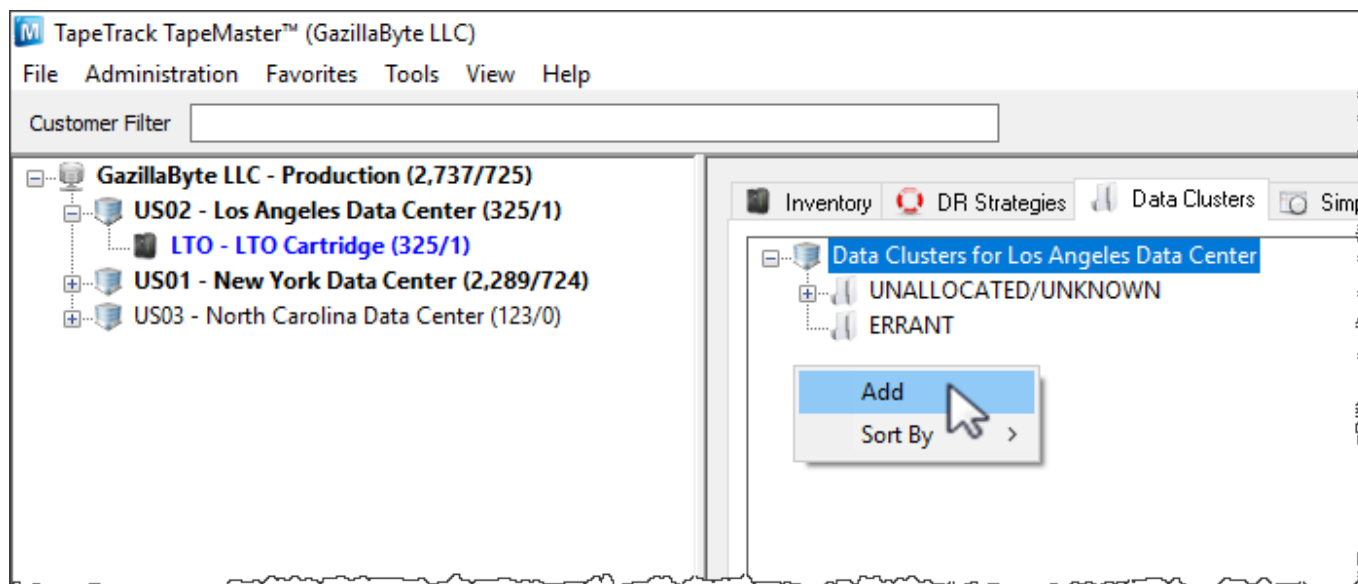
They can be used in combination with [Simple Management Rules](#) to coordinate [Volume](#) movements.



Adding A Data Cluster

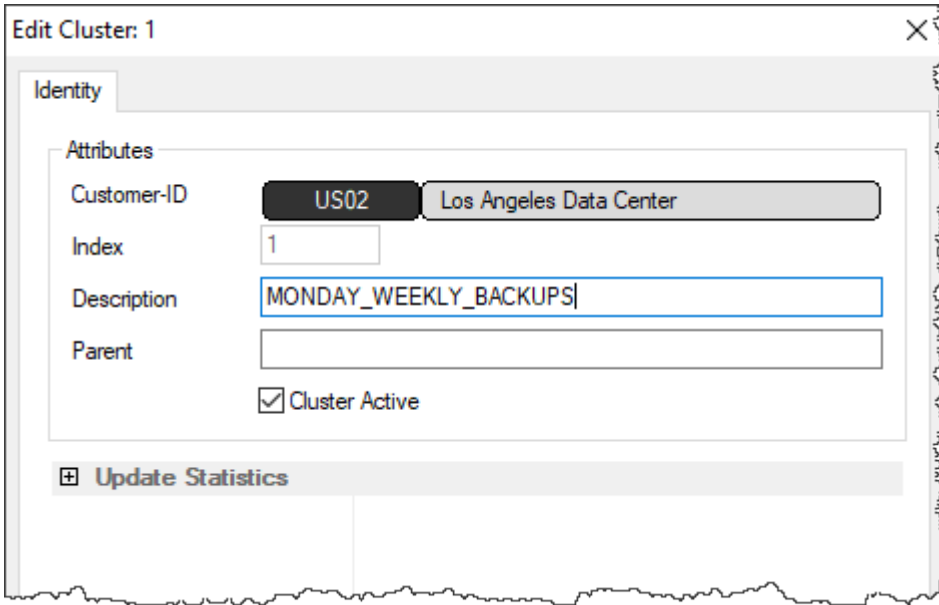
To add a Data Cluster: In TapeMaster, open the Media type of the required [Customer](#) and select the Data Clusters Administrative Tab.

Right-click inside the Data Clusters Administrative Tab and select Add or use the Insert key on the keyboard.



Fill out a brief description of this Data Cluster and, if necessary, insert a Parent Data Cluster for this

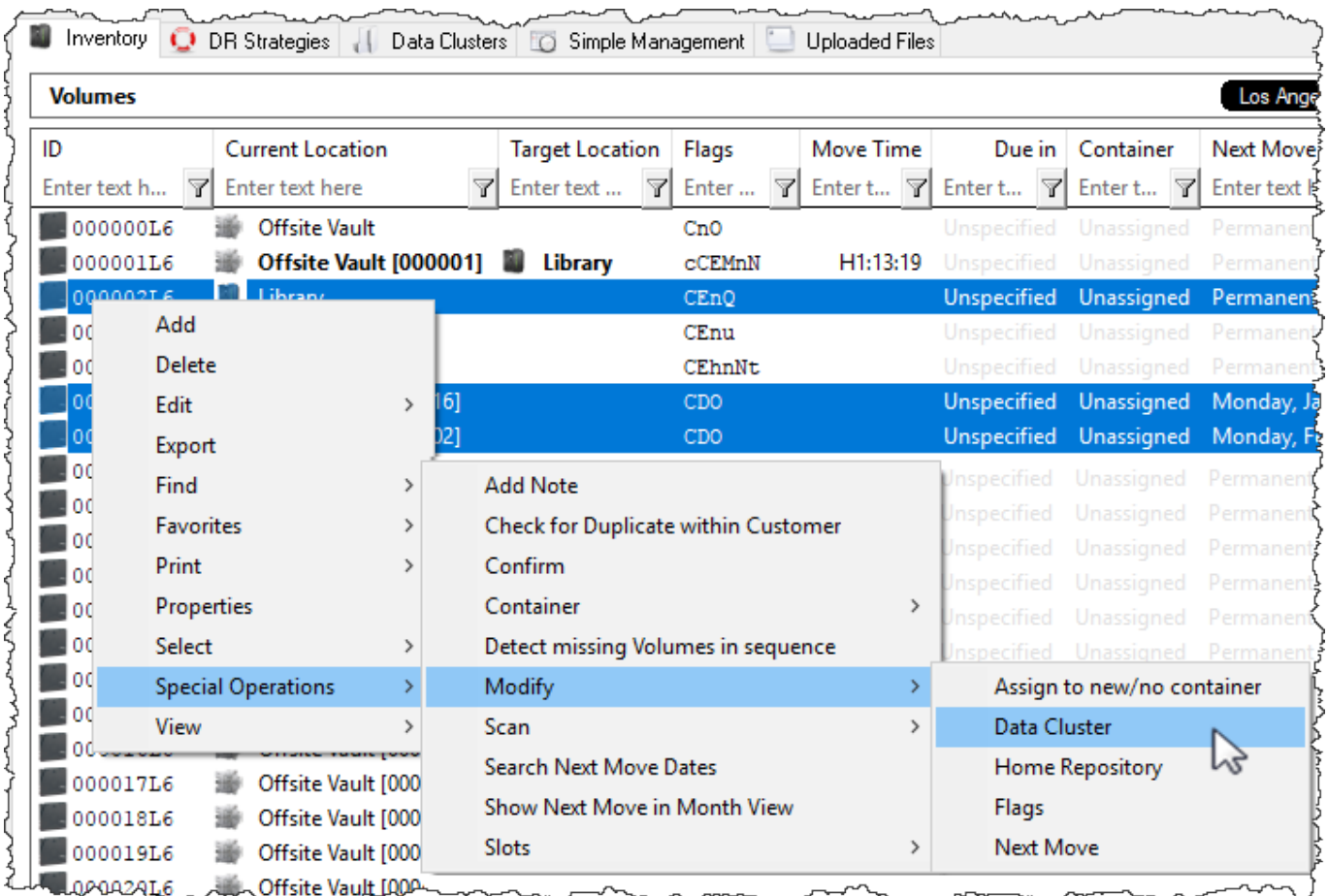
Data Cluster to be nested under.



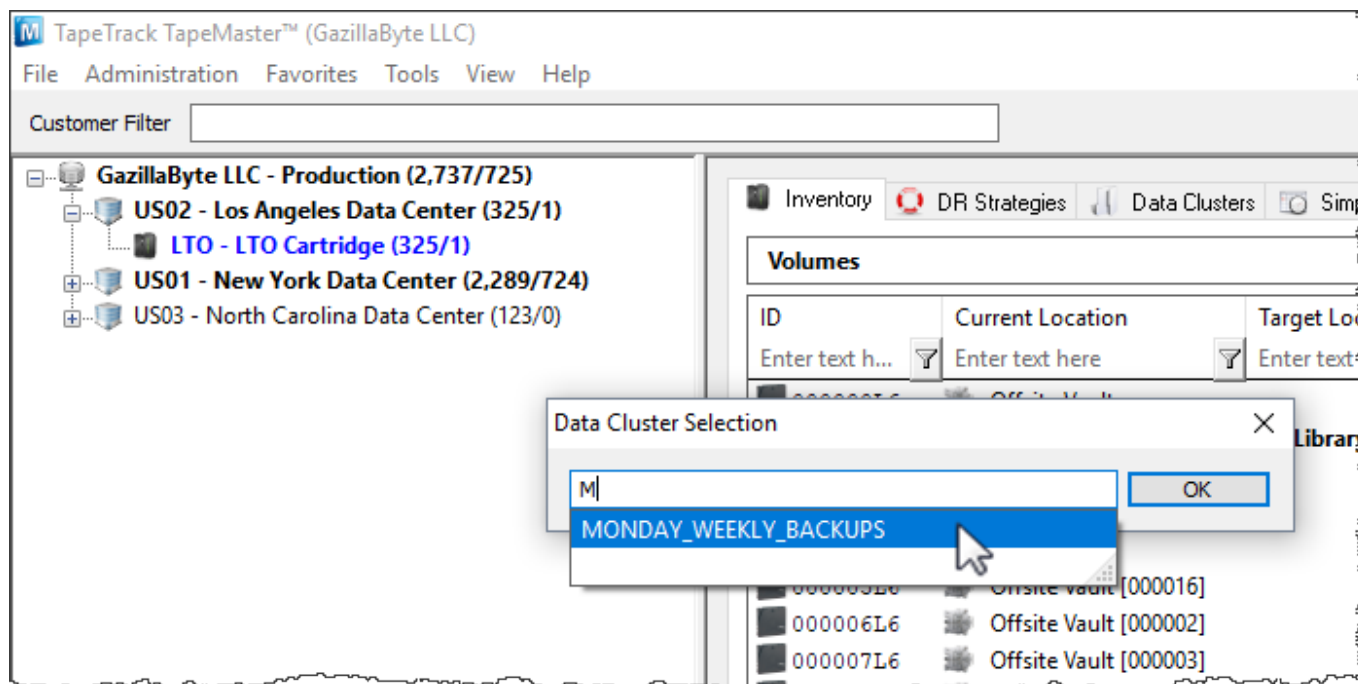
Add Volumes to the Data Cluster.

Adding Multiple Volumes

From the Inventory tab of the required Customers media type: Select the [Volumes](#) in the [Volume List](#). Right-click, select Special Operations → Modify → Data Cluster.



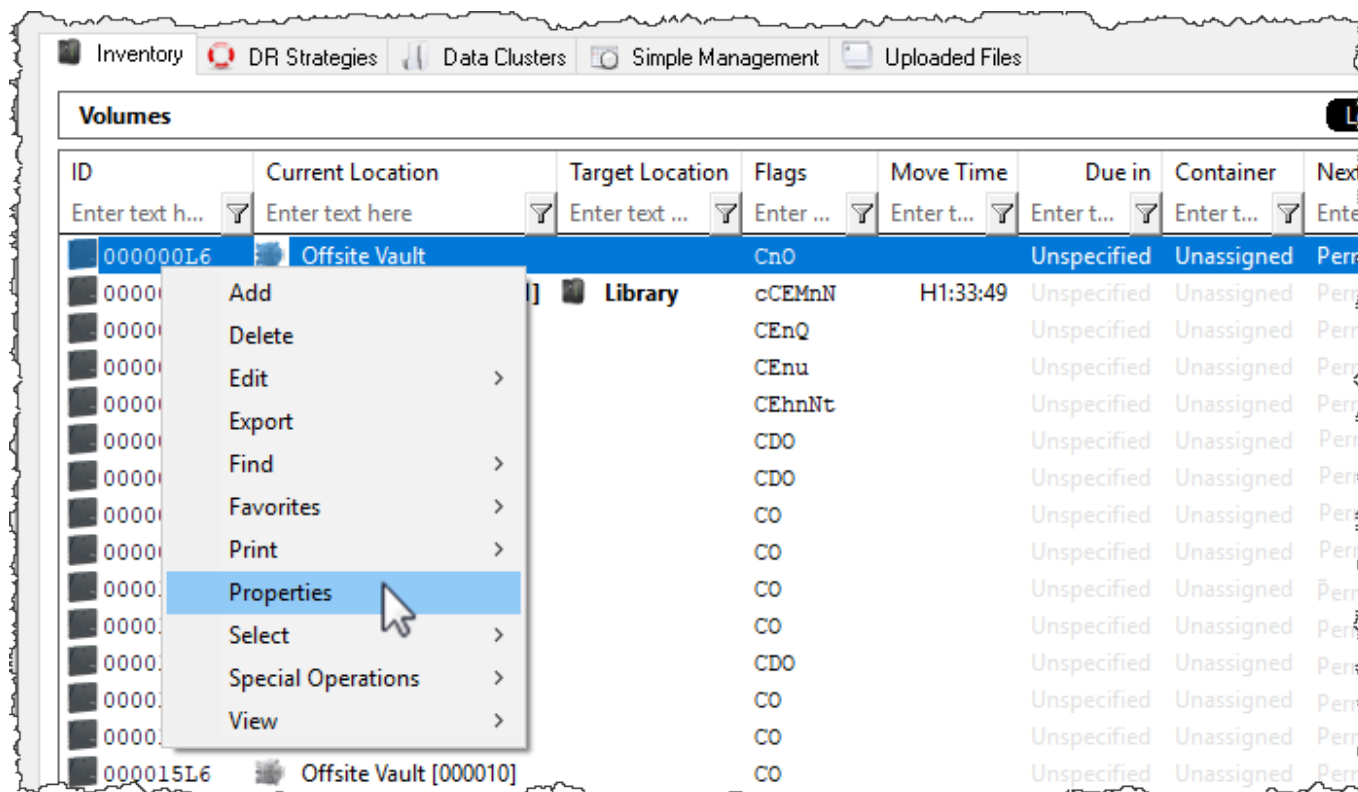
In the Data Cluster Selection window type in the Data Cluster that these **Volumes** should be associated with, and select from the clusters in the displayed list.



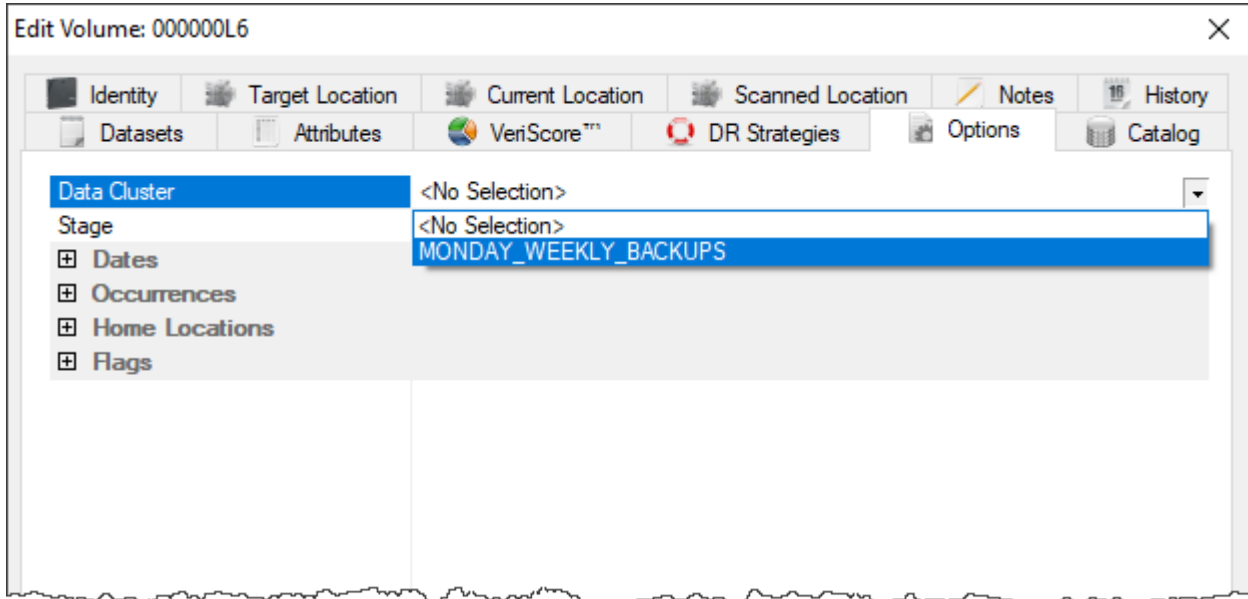
Click OK to save.

Adding Single Volume

Double-click or Right-Click and select Properties on a **Volume** in the **Volume List** to launch the **Volume Properties Window**.



Select the Options tab. At the top will be a field called **Data Cluster** with a drop down menu. Select the Data Cluster to associate this **Volume** with and click Save.



From:
<https://rtfm.tapetrack.com/> - **TapeTrack Documentation**

Permanent link:
https://rtfm.tapetrack.com/object/data_cluster?rev=1509729030

Last update: **2025/01/21 22:07**

