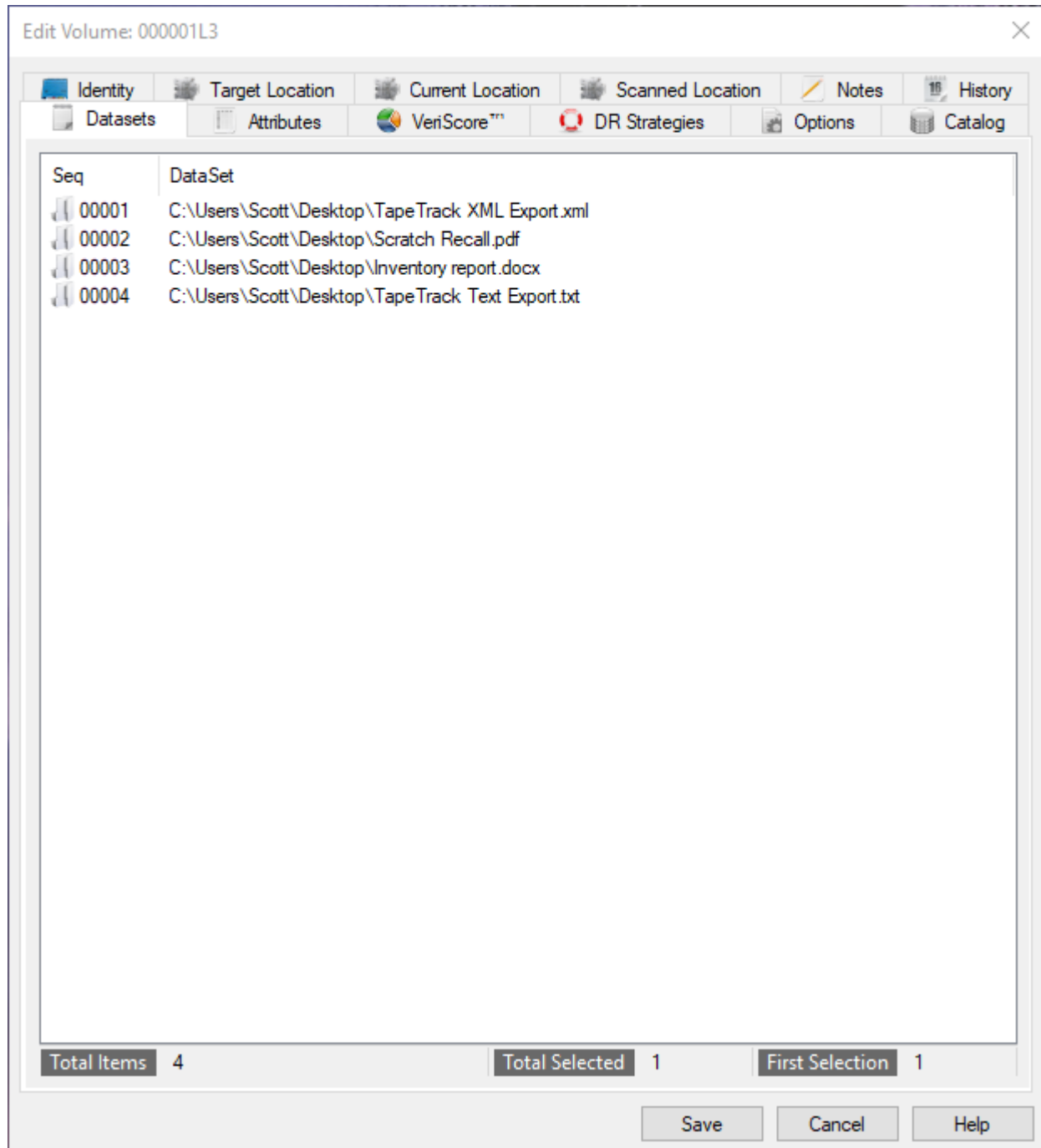


# Volume Datasets

The Datasets Tab in the Volume Properties Window displays a list of Datasets associated with the selected Volume. A Dataset is a piece of information or file stored on a Volume.

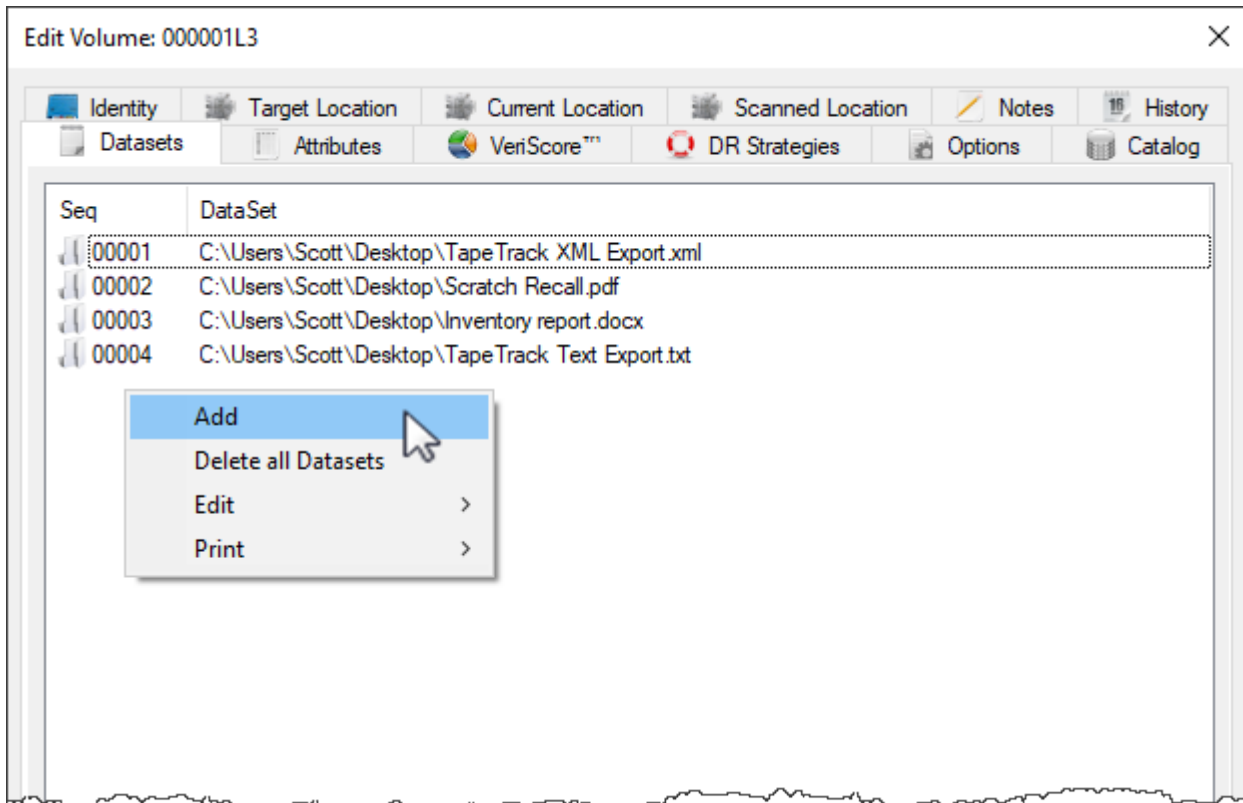


## Adding Datasets

Datasets can be added to the volume by either:

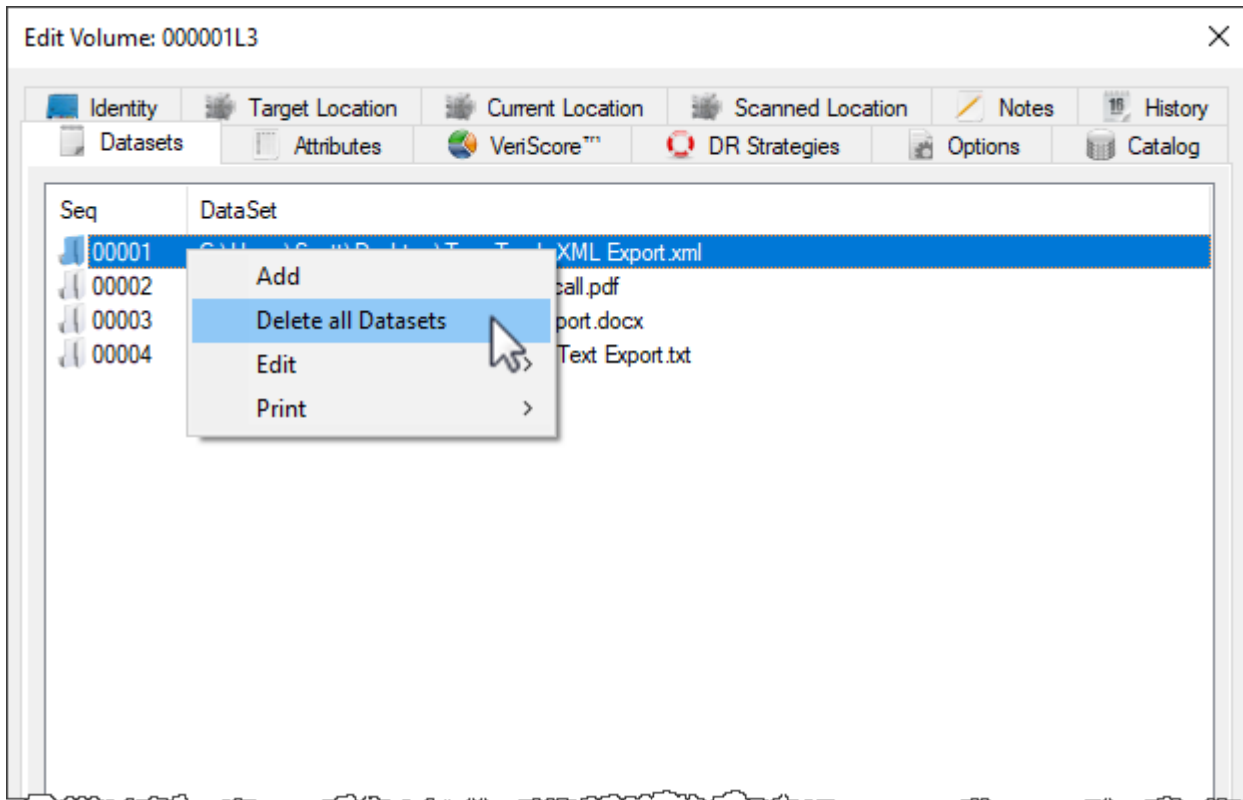
- Right-Clicking in the **Datasets** tab and selecting "Add New Dataset". This will launch a window where a filename or path can be manually added.

- Drag and drop a file or group of files from Windows Explorer to the **Datasets** tab.
- Copy files to the clipboard in Windows Explorer, right click in the **Datasets** tab and select Edit → Paste from Clipboard.



## Deleting Datasets

When deleting datasets from a volume, all datasets will be removed. It is not possible to delete entries one at a time.



## Copying Datasets

To copy a dataset to clipboard, right click on the required entry and select Edit → Copy To Clipboard



## Printing Datasets

To print current datasets, select required dataset entries, right click and select Print and then All to print all entries or Selected to print the selected entries.



From:  
<https://rtfm.tapetrack.com/> - **TapeTrack Documentation**

Permanent link:  
<https://rtfm.tapetrack.com/object/dataset?rev=1526005423>

Last update: **2025/01/21 22:07**

