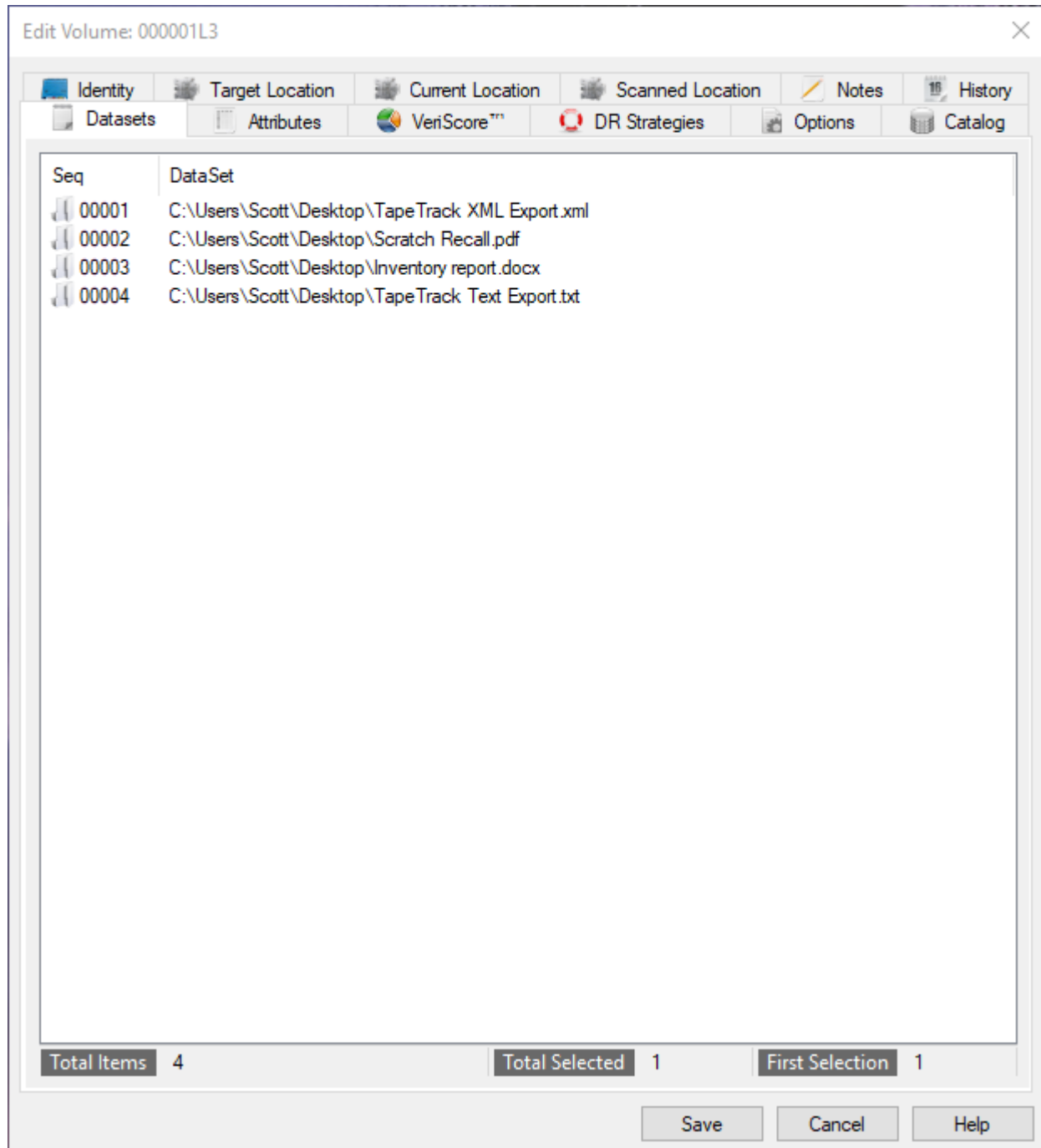


Volume Datasets

The Datasets Tab in the Volume Properties Window displays a list of Datasets associated with the selected Volume. A Dataset is a piece of information or file stored on a Volume.

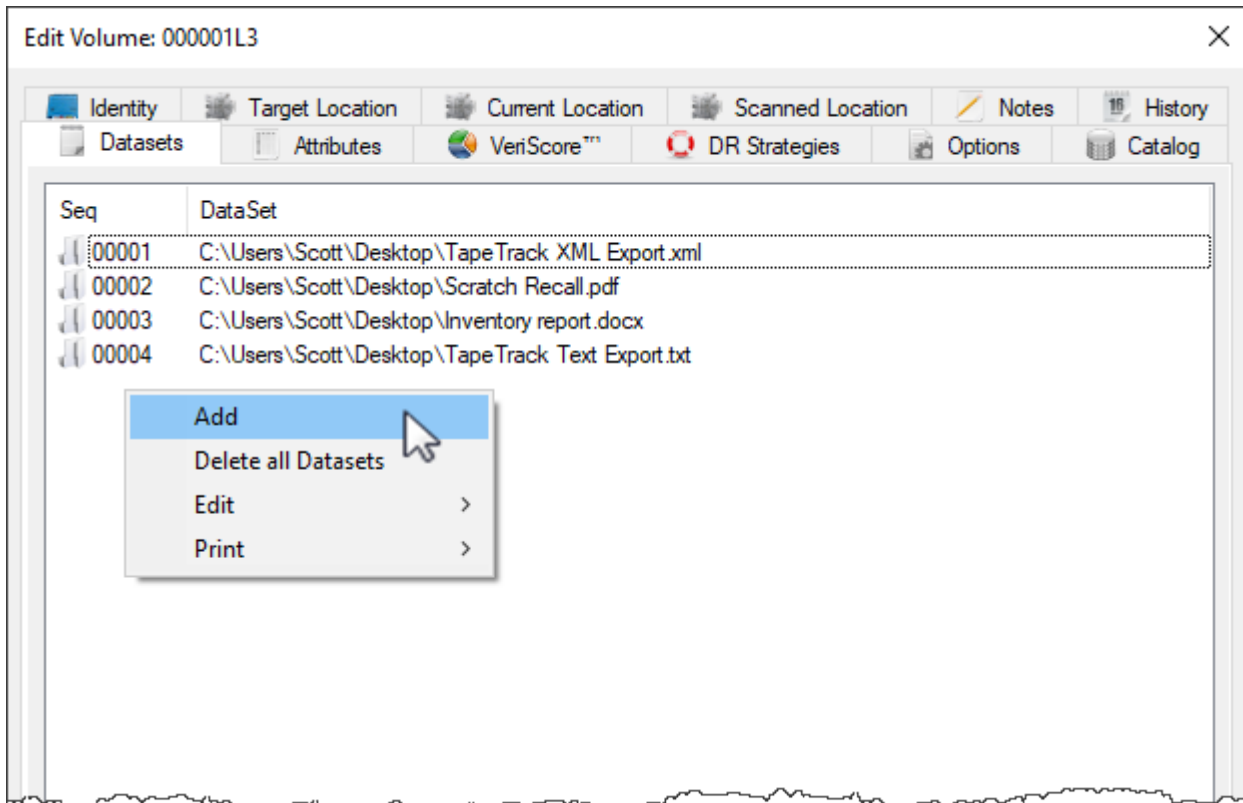


Adding Datasets

Datasets can be added to the volume by either:

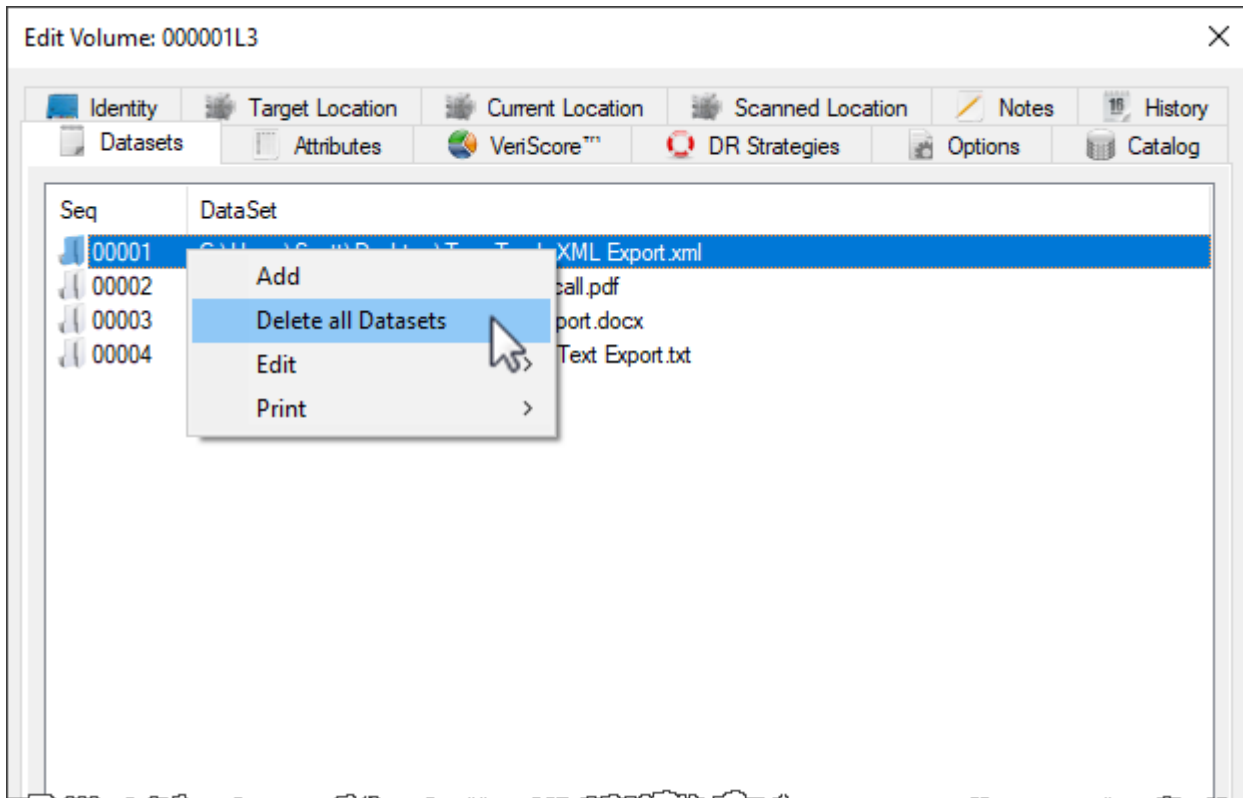
- Right-Clicking in the **Datasets** tab and selecting "Add New Dataset". This will launch a window where a filename or path can be manually added.

- Drag and drop a file or group of files from Windows Explorer to the **Datasets** tab.
- Copy files to the clipboard in Windows Explorer, right click in the **Datasets** tab and select Edit → Paste from Clipboard.



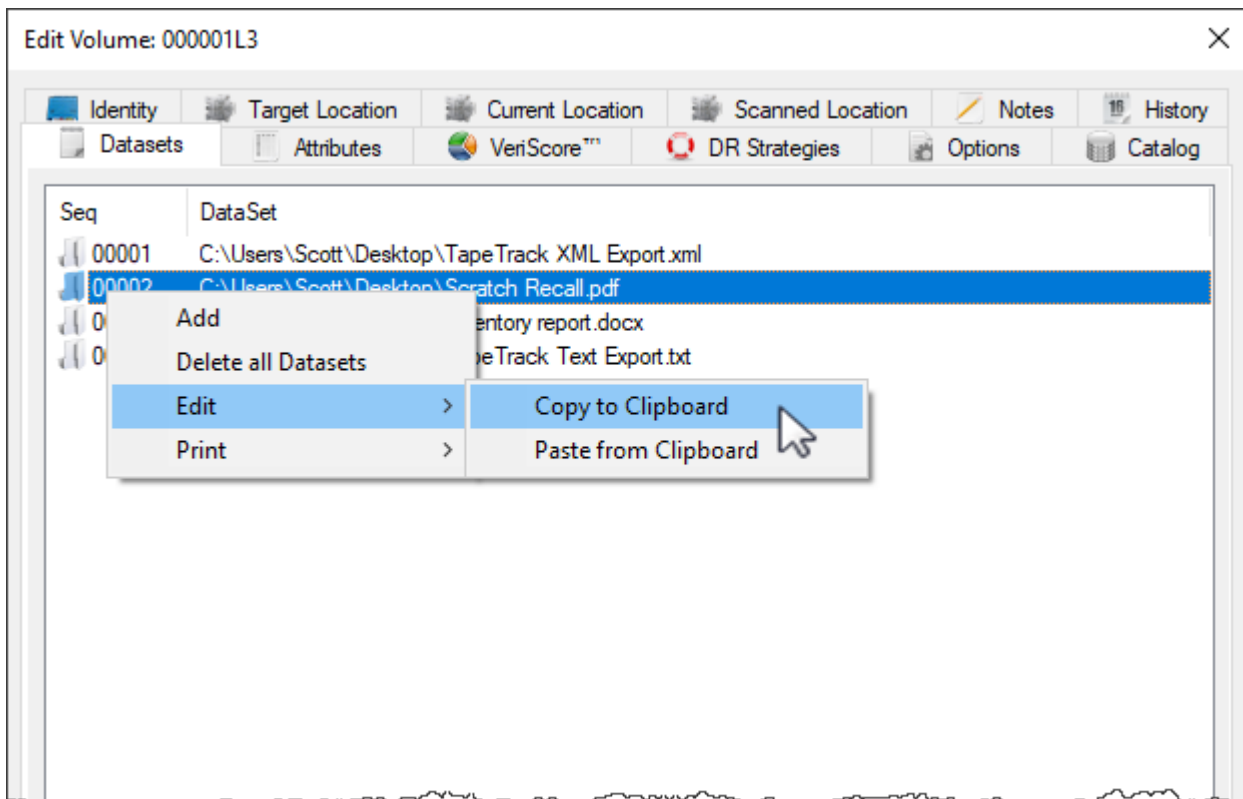
Deleting Datasets

When deleting datasets from a volume, all datasets will be removed. It is not possible to delete entries one at a time.



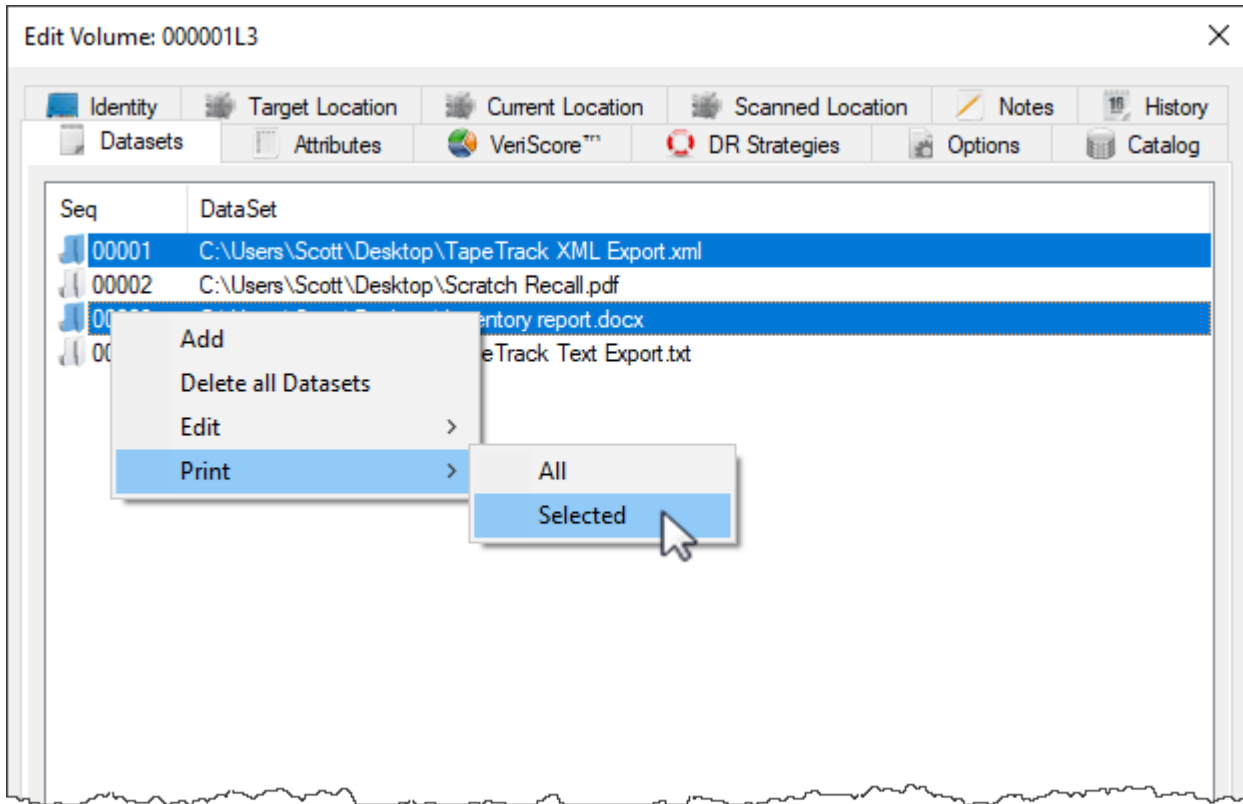
Copying Datasets

To copy a dataset to clipboard, right click on the required entry and select Edit → Copy To Clipboard



Printing Datasets

To print current datasets, select required dataset entries, right click and select Print and then All to print all entries or Selected to print the selected entries.



From: <https://rtfm.tapetrack.com/> - **TapeTrack Documentation**

Permanent link: <https://rtfm.tapetrack.com/object/dataset?rev=1526006713>

Last update: **2025/01/21 22:07**

