

# Media Type



Media is usually separated in TapeTrack according to the media type (eg LTO, CD or 359x). Media generations, such as LTO3 and LTO4, are traditionally grouped together. Media types can be added, or removed, as required for each customer.

## Media-ID

A Media-ID is a string of up to 4 alphanumeric characters associated with a media type.

Each media object's ID must be unique within the parent Customer.

## Media Description

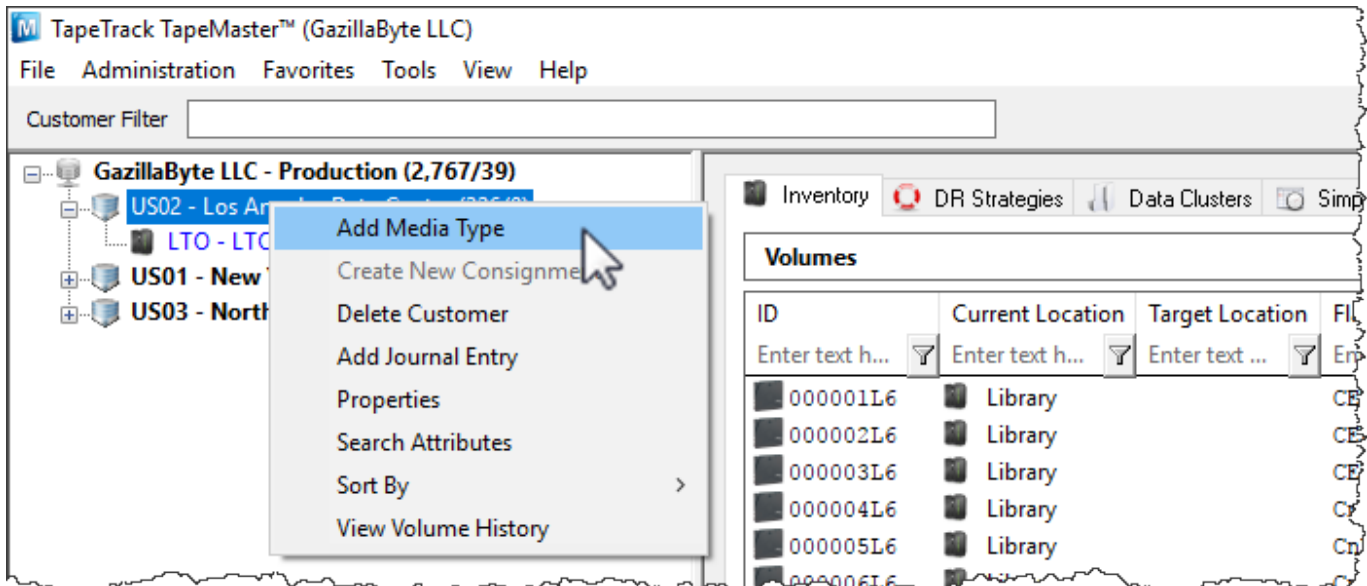
A Media object has a description field. This allows a user friendly description of up to forty alphanumeric characters to be associated with the Media ID.

## Dependencies

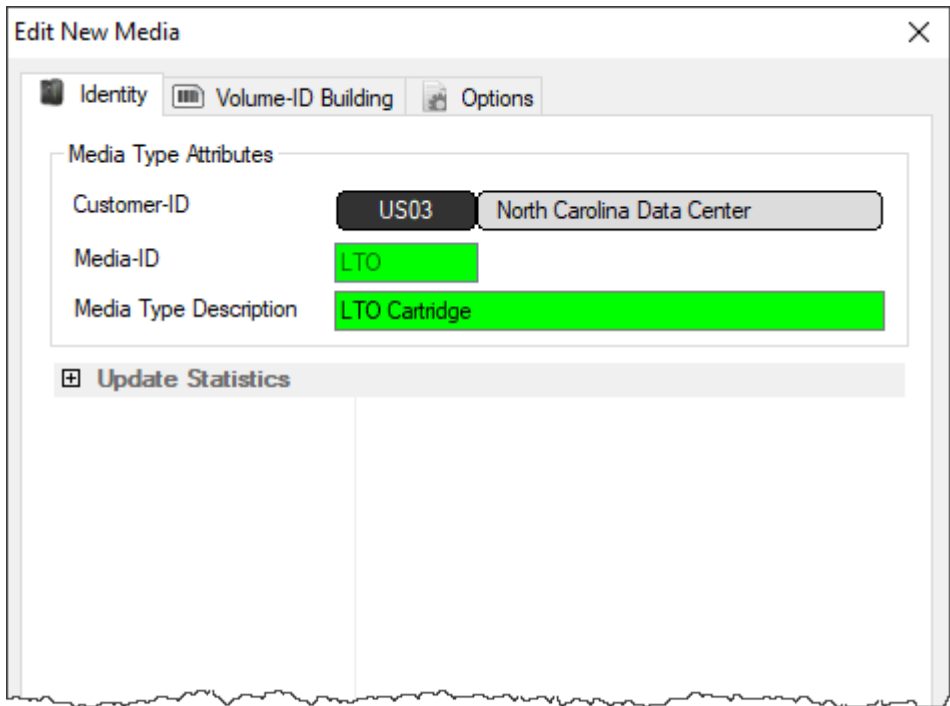
- [Customer](#) (parent)
- [Repository](#) (child)
- [Volume](#) (child)

## Creating a Media Type

To add a media type, right-click a [Customer](#) and select Add Media Type.



This will launch a Edit New Media window. The first tab on the Edit New Media window is the Identity tab. The Identity tab requires the input of a Media ID (up to four characters) and a Media Type Description (up to twenty characters).



The Options Tab provides options for the new Media Type. Set the option values required.

Property	Value
Hide Media Type	False
Internal	False
Maximum Volumes	0
Maximum Repositories	0
Allowable Volume-IDs	?????L?
Default Media Type	<b>True</b>
Auto Simple Management	False
Auto Container	False
Stock Controlled	False
Auto Stock Selection	False
Relaxed Barcode Matching	<b>True</b>
No Move-back Warning	False
Lock Volumes	False
No HealthCheck	False
Show BuiltIn Repositories	False
Remove barcode suffix	False
Barcodes use Modulo43	False
Default Repository	<b>Library</b>

- **Hide Media Type** when set to true removes the media type from view in the [customer tree](#).
- **Internal** media type has an internal purpose and should not be displayed to all applications.
- **Maximum Volumes** allowed. 0 = unlimited.
- **Maximum Repositories** allowed. 0 = unlimited.
- **Allowable Volume-ID's** if set, restricts the allowable [volume ID](#) formats for this [customer](#).
- **Default Media Type** This media type is the default when none can be determined.
- **Auto Simple Management** adds new media with the simple management option.
- **Auto Container** automatically adds new [volumes](#) as containers.
- **Stock Controlled** requires all new volumes to have a stock control type.
- **Auto Stock Selection** selects a stock type for new volumes automatically.
- **Relaxed Barcode Matching** attempts to match a scanned barcode with L|T|J suffix when not found.
- **No Move-back Warning** stops a warning [flag](#) (W) being added to a volume if it moves back to its current repository.
- **Lock Volumes** stops updates from occurring to volume data.
- **No HealthCheck** excludes media from HealthCheck statistics.
- **Show Built In Repositories** includes built in [repositories](#) in displayed list.
- **Remove Barcode Suffix** removes suffix from scanned barcode before processing.
- **Barcodes use Modulo43** will be reviewed for Modulo 43 checksum digits.
- **Default Repository** allocates the default location for new volumes.

Click Save

The next prompt will be to add the relevant [repositories](#).

The dialog box titled "Add Repositories for new Media Type" contains the following text:

You can now add one or more Repositories (by enabling the "Create" property).

A Repository is a general location a tape volume might reside in (i.e. Offsite, Legal Hold).

It is completely up to you how granular you define your Repositories. Some users have one to represent all of their onsite tape libraries, others have one for each tape library.

Below the text are two input fields:

- US04 [ ]
- DLT [ DLT Cartridge ]

A table below shows the details for a repository:

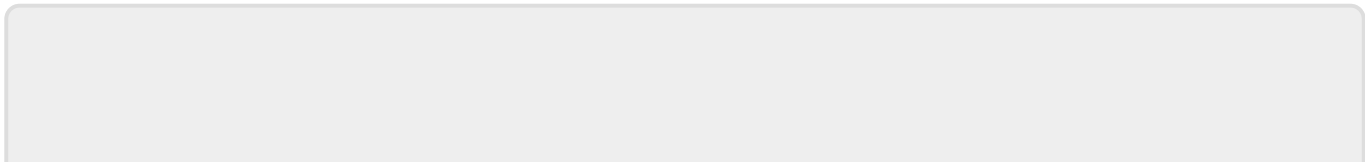
Repository [1]	
ID	OFFS
Description	Offsite Vault
Type	Vault
Next Repository	LIBR
Offsite	True
Initial	False
Create	True

## Deleting Media Types

Right-click a [Media Type](#) in the [Customer Tree](#). Select Delete Media Type.

The screenshot shows the TapeTrack TapeMaster interface for "GazillaByte LLC - Production (2,767/39)". The "Customer Tree" on the left shows a tree structure with "LTO - LTO Cartridge (0/0)" highlighted in green. A context menu is open over it with "Delete Media Type" selected. A "Confirm Delete" dialog box is also open, asking "Are you sure that you want to delete item LTO?" with "Yes", "No", and "Cancel" buttons.

 **Media Types** that contain [Repositories](#) and/or [Volumes](#) cannot be deleted until dependencies are removed.



From:

<https://rtfm.tapetrack.com/> - **TapeTrack Documentation**

Permanent link:

<https://rtfm.tapetrack.com/object/media?rev=1539817430>

Last update: **2025/01/21 22:07**

