

Repository

A Repository represents the general location of a [Volume](#).

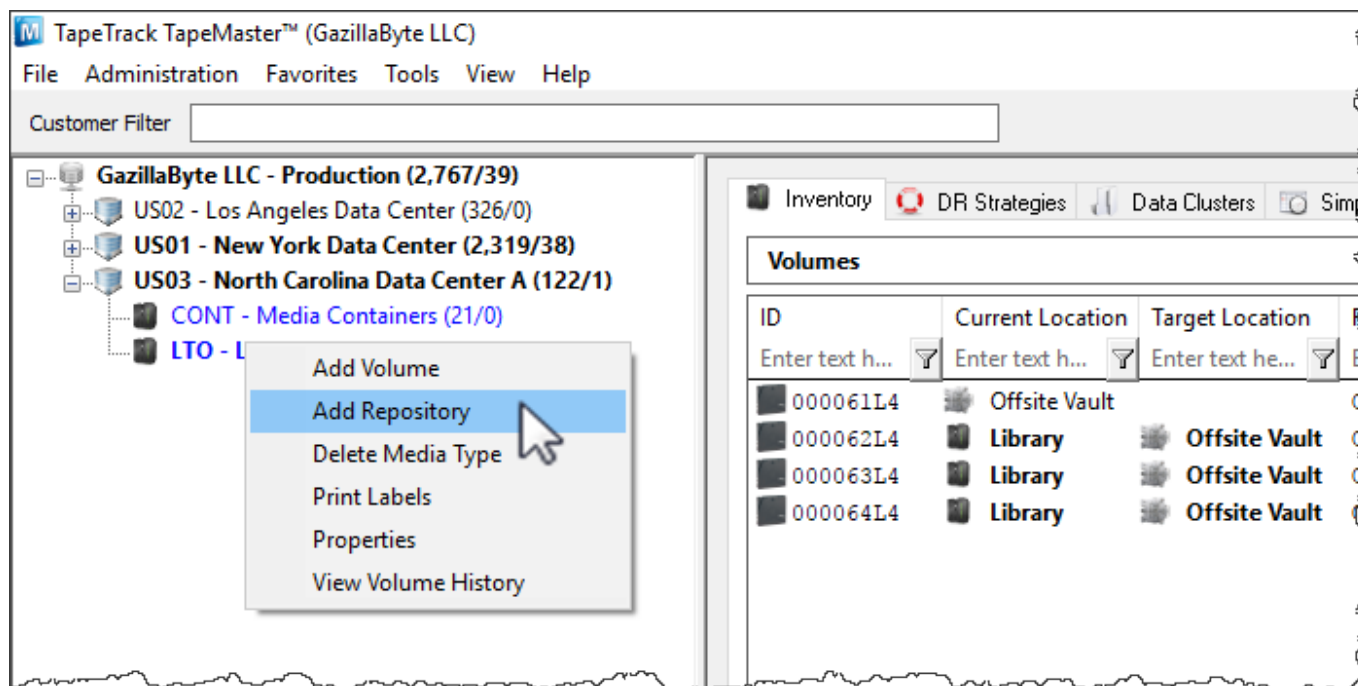
Repository-ID

Dependencies

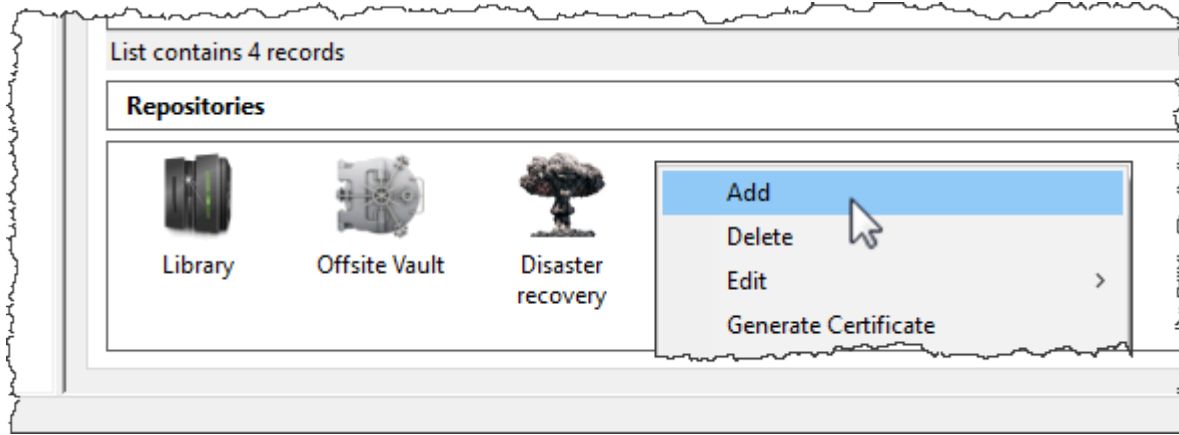
- [Media Type](#) (parent)

Creating a Repository

To add a Repository, right-click on the Media Type that the Repository will be listed under and select Add Repository.



or right click in the **Repositories** window and select Add.

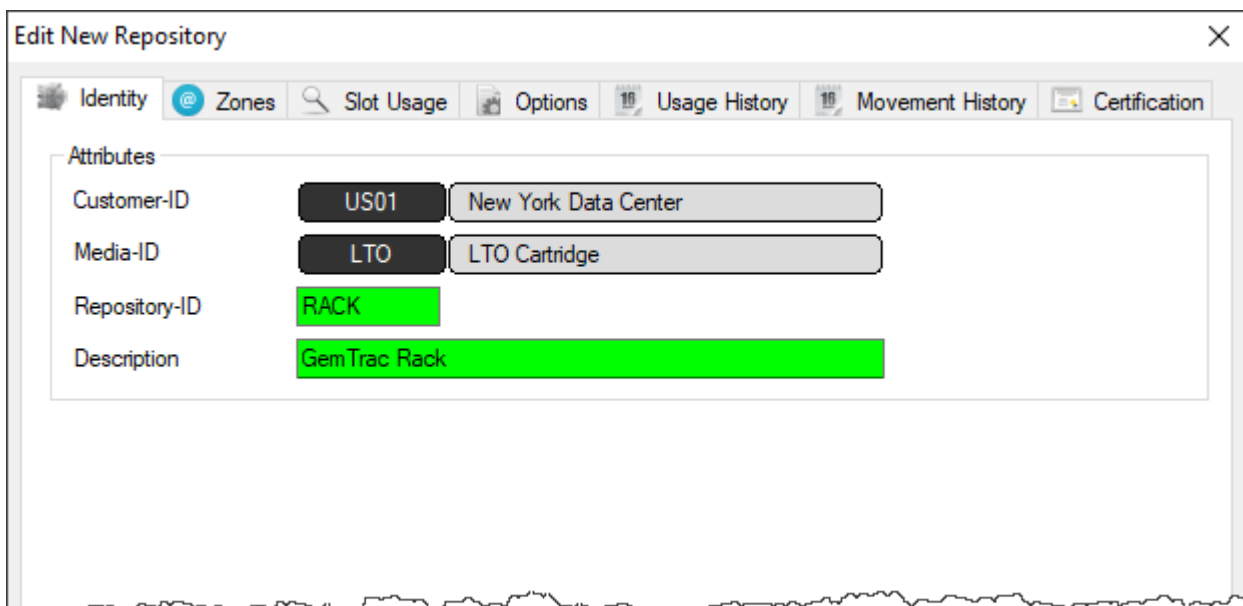


This will launch Edit New Repository window.

Basic Repository Options

Identity



Insert the Repository ID (up to 4 permanent alphanumeric characters) and repository description (up to 20 alphanumeric characters)



Options

Select type of repository to change display icon to match repository function:

- Destruction
- Disaster Recovery
- Legal Hold
- Library
- Ordered
- Rack
- Scratch

-  Transport
-  Vault

Select the repository the volume will move to next (required for all automated tape movement) after this repository.

Click Save to create repository.

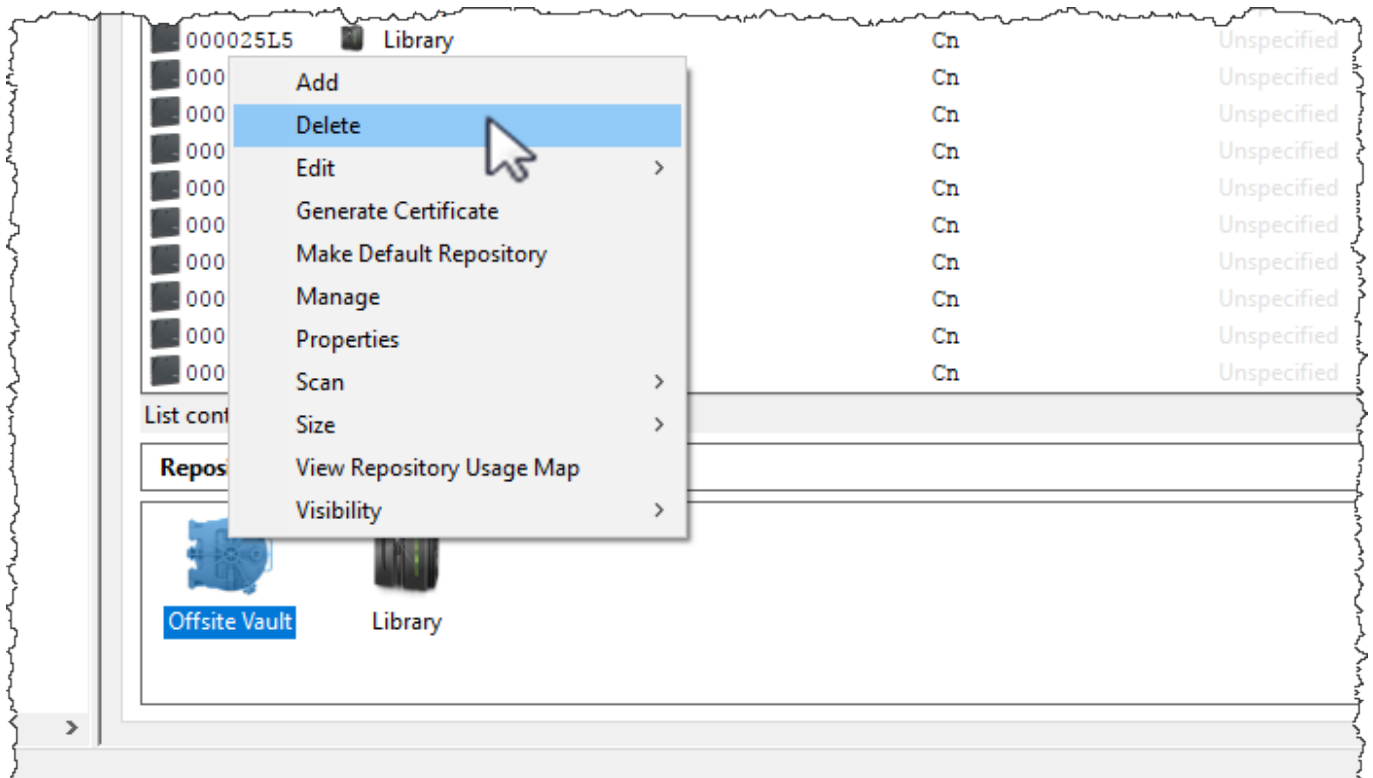
Advanced Repository Options

- [Zones](#)
- [Slot Usage](#)
- [Options](#)
- [Usage History](#)
- [Movement History](#)

Deleting a Repository

To delete a Repository, right-click on the Repository that needs to be deleted and select Delete.

 There must not be any Volumes in this Repository in order to delete it.



From:

<https://rtfm.tapetrack.com/> - **TapeTrack Documentation**

Permanent link:

<https://rtfm.tapetrack.com/object/repository?rev=1507504853>

Last update: **2025/01/21 22:07**

