

# Volume

A Volume represents one physical object. Common Volumes include single LTO Cartridges, single DLT Cartridges, single compact discs, etc.

Volumes are the lowest Object of the TapeTrack hierarchy. They are owned by Customers and Media Types and can be moved between Repositories.

## Volume-ID

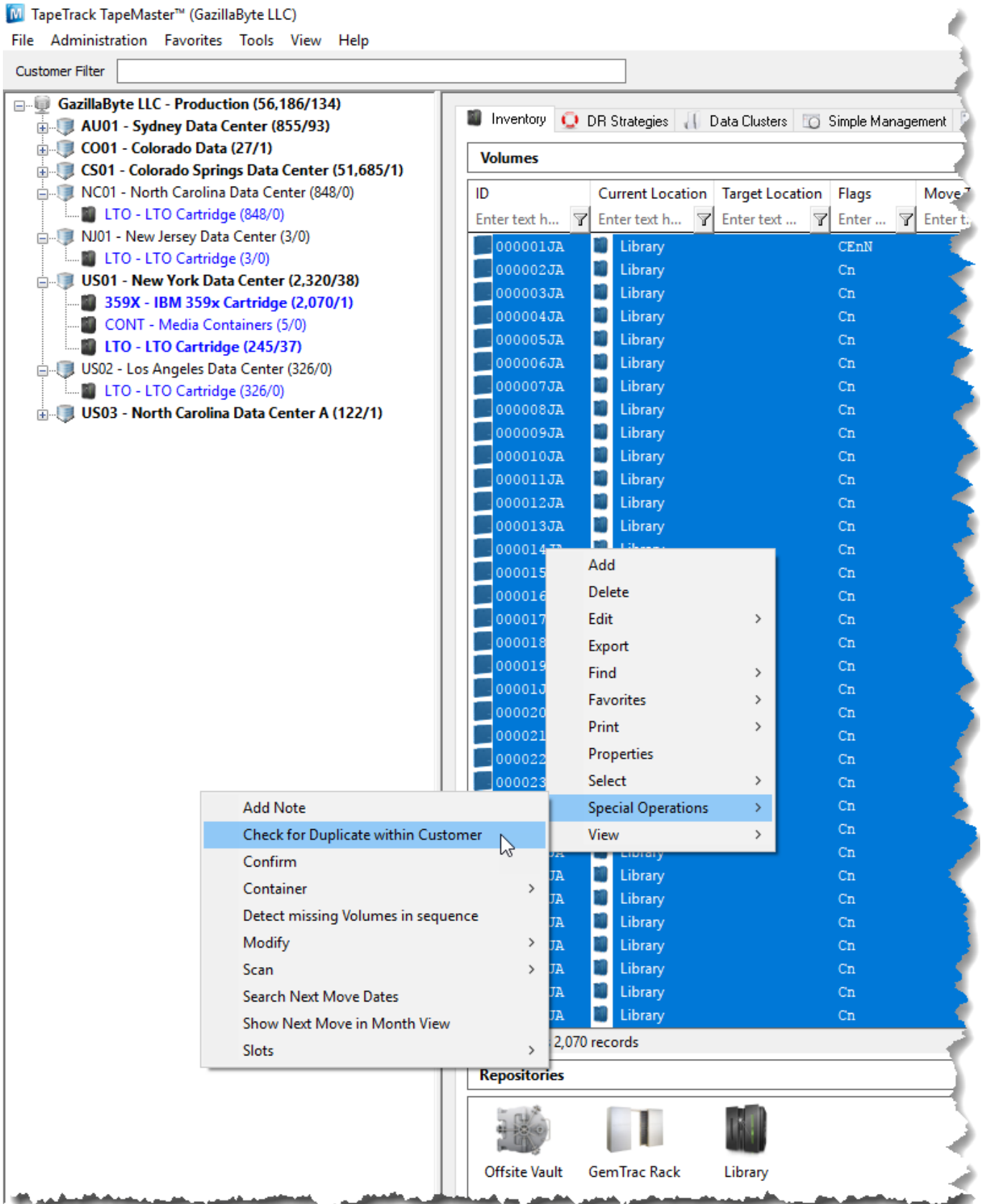
A Volume-ID is a string of characters associated with a Volume. Volume-IDs can be used to create Barcodes. They are often referred to as Volume Serials or Volsers.

## Setting Rules for Volume-IDs

Allowable Volume-IDs can be set in the Options Tab of the Media Type Properties window.

## Duplicate Volume-IDs

It is recommended that there be no duplicate Volume-IDs in a Customer. To verify that there are no duplicate Volumes in a Customer, select **Select All** from the Right-Click Menu in the Volume list, then use the **Check for Duplicate within Customer** function in the Special Operations menu under the Right-Click Menu.



## Types of Volumes

Two types of Volumes can exist within a given Media Type:

**Volumes** - Any single physical object.

**Containers** - A Container is a Volume that can hold other Volumes.

Further Reading

Volume Properties Window

Moving Volumes

Volume List

## Parent

- [Media Type](#)

[Adding and deleting a Volume](#)

From:  
<https://rtfm.tapetrack.com/> - **TapeTrack Documentation**

Permanent link:  
<https://rtfm.tapetrack.com/object/volume?rev=1505403981>

Last update: **2025/01/21 22:07**

