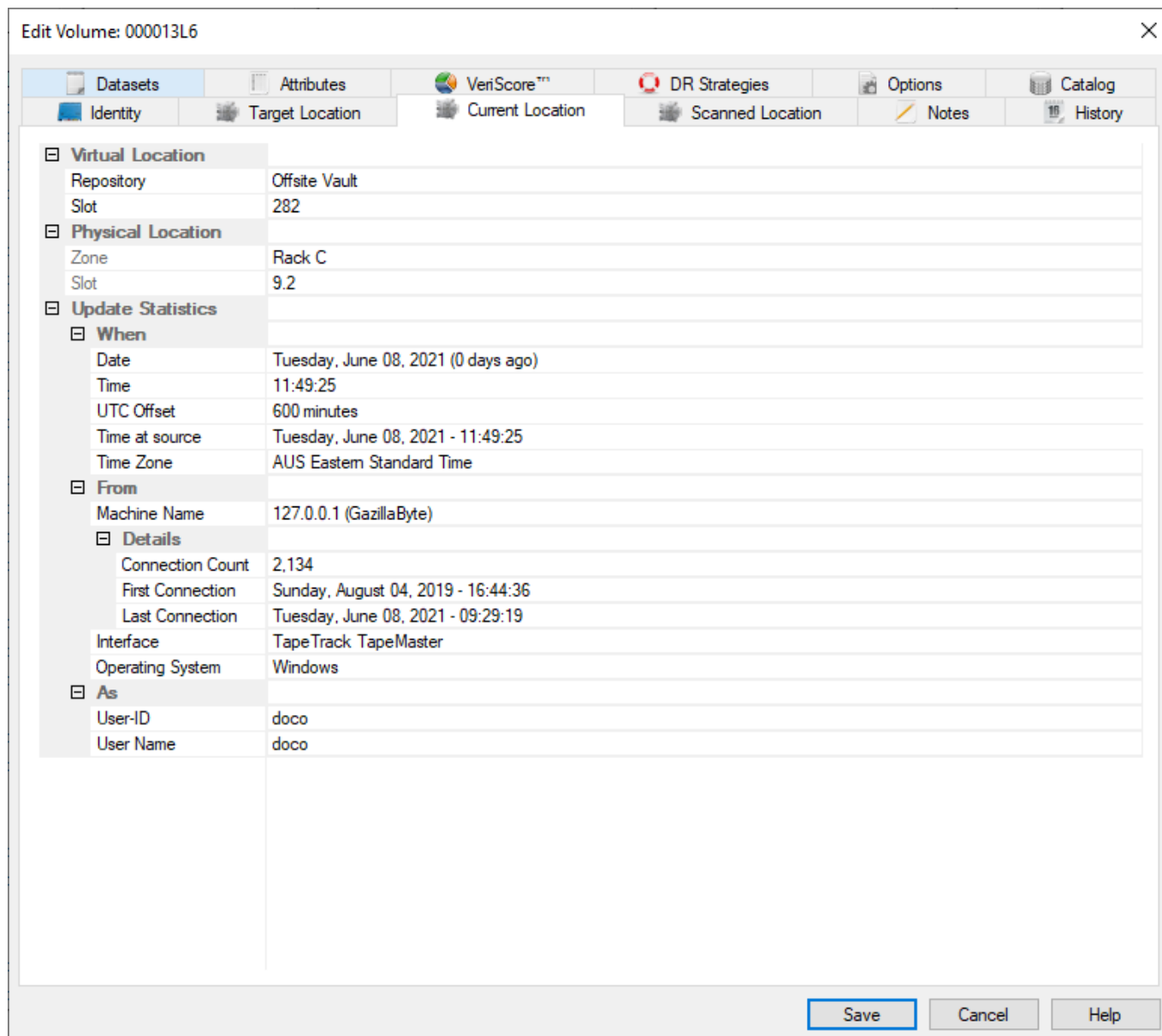


Volume Current Location

A volumes current location is the last repository the volume was confirmed at. If the current location matches the target location it is also the physical location the volume should be at.

If slotting is enabled the current location will include the slot allocation details as well.



The **Relative location** panel (A) displays:

- Repository-ID and Description.
- Slot Number allocated.
- Maximum number of slots assigned to the target repository.

If slotting is not enabled, or no zones mapped to the repository, slot number and maximum will display as zero.

The **Absolute Location** (B) displays:

- The Zone-ID.
- Level location.
- Slot loction

The absolute location is a physical representation of where the slot is located based on racking parameters, such as number or drawers/shelves and slots per drawer/shelf, to enable users to easily locate the current location. If slotting is not enabled, or no zones mapped to the repository, Zone-ID will be blank, level and slot will display as zero.

Expanding the lower section **Update Statistics** (C) displays information of when, where and who placed the volume into a move to the target location. These values are set automatically on creation of the volume and are non editable fields.

From:

<https://rtfm.tapetrack.com/> - **TapeTrack Documentation**

Permanent link:

https://rtfm.tapetrack.com/object/volume_current?rev=1525226205

Last update: **2025/01/21 22:07**

