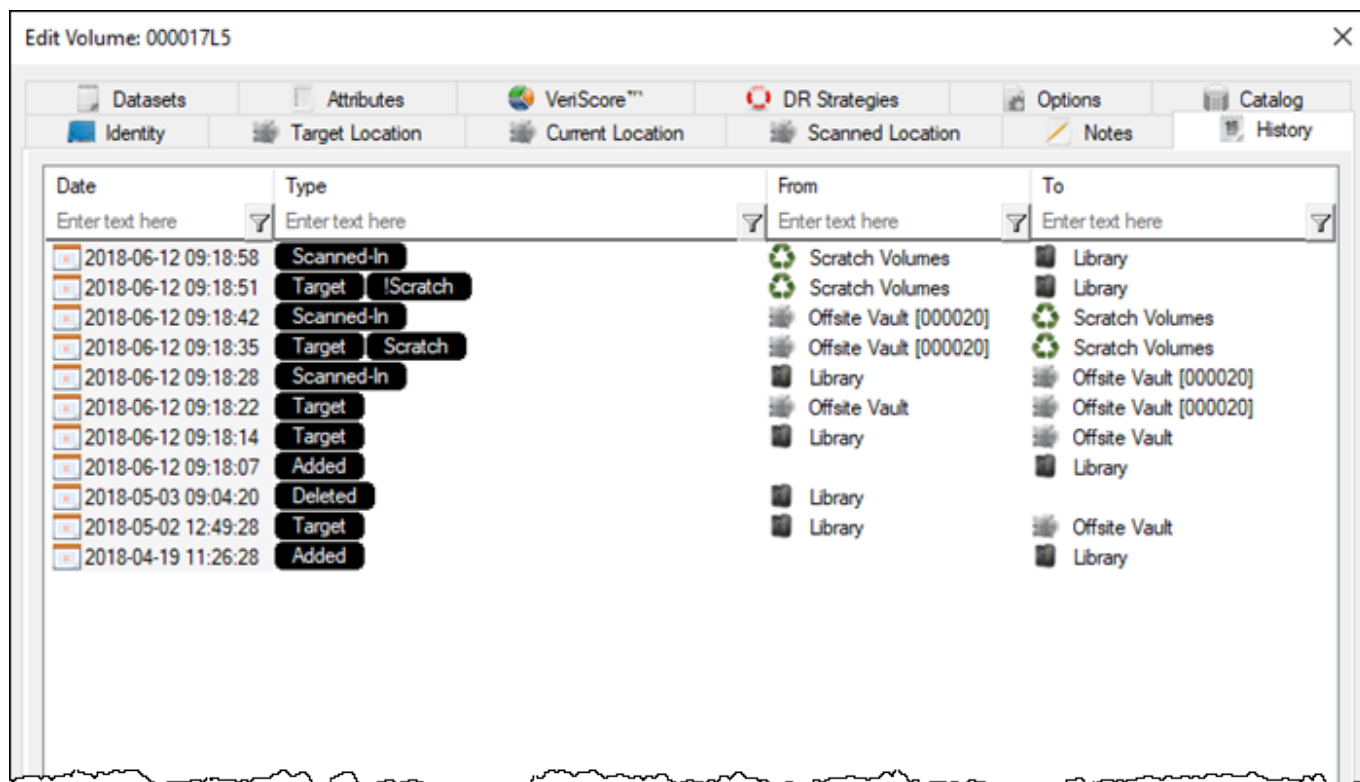


# Volume History

Volume history tab displays all historical records attached to a volume including creation, location movements and user interactions.



Historical events for the volume display summary details on the **History** tab.

For each of these events, the date, time type and locations are listed.

Types of historical events include:

- Added - Creation of volume.
- Deleted - Removal of volume.
- Target - New Target location, volume place in a move.
- Scanned-Out - Scanning volume out to record leaving current repository.
- Scanned-In - Scanning in volume to confirm arrival at target repository.
- Date - Adding next move date to volume.

Right clicking on a historical entry, or double clicking, and selecting **Details** will open a **History Details** window. This provides a more verbose listing of the historical entry including:

- **When**
  - Date
  - Time of entry
  - UTC offset
  - Time at source
  - Time zone at source
- **User**
  - User ID

- User Name
- Using
  - IP address of user access
  - TapeTrack interface or software used
  - User operating system
- Micellaneous
  - Next move date
  - Fields Updated
- Repository
  - From
    - Relative
      - Repository
      - Slot
    - Absolute
      - Zone
      - Zone Slot
  - To
    - Relative
      - Repository
      - Slot
    - Absolute
      - Zone
      - Zone Slot

From:  
<https://rtfm.tapetrack.com/> - **TapeTrack Documentation**

Permanent link:  
[https://rtfm.tapetrack.com/object/volume\\_history?rev=1525917159](https://rtfm.tapetrack.com/object/volume_history?rev=1525917159)

Last update: **2025/01/21 22:07**

