

# Volume History

Volume history tab displays all historical records attached to a volume including creation, location movements and user interactions.

## History Summary

Date	Type	From	To
2018-06-12 09:18:58	Scanned-In	Scratch Volumes	Library
2018-06-12 09:18:51	Target	Scratch Volumes	Library
2018-06-12 09:18:42	Scanned-In	Offsite Vault [000020]	Scratch Volumes
2018-06-12 09:18:35	Target	Offsite Vault [000020]	Scratch Volumes
2018-06-12 09:18:28	Scanned-In	Library	Offsite Vault [000020]
2018-06-12 09:18:22	Target	Offsite Vault	Offsite Vault [000020]
2018-06-12 09:18:14	Target	Library	Offsite Vault
2018-06-12 09:18:07	Added	Library	Library
2018-05-03 09:04:20	Deleted	Library	Library
2018-05-02 12:49:28	Target	Library	Offsite Vault
2018-04-19 11:26:28	Added	Library	Library

Historical events for the volume display summary details on the **History** tab.

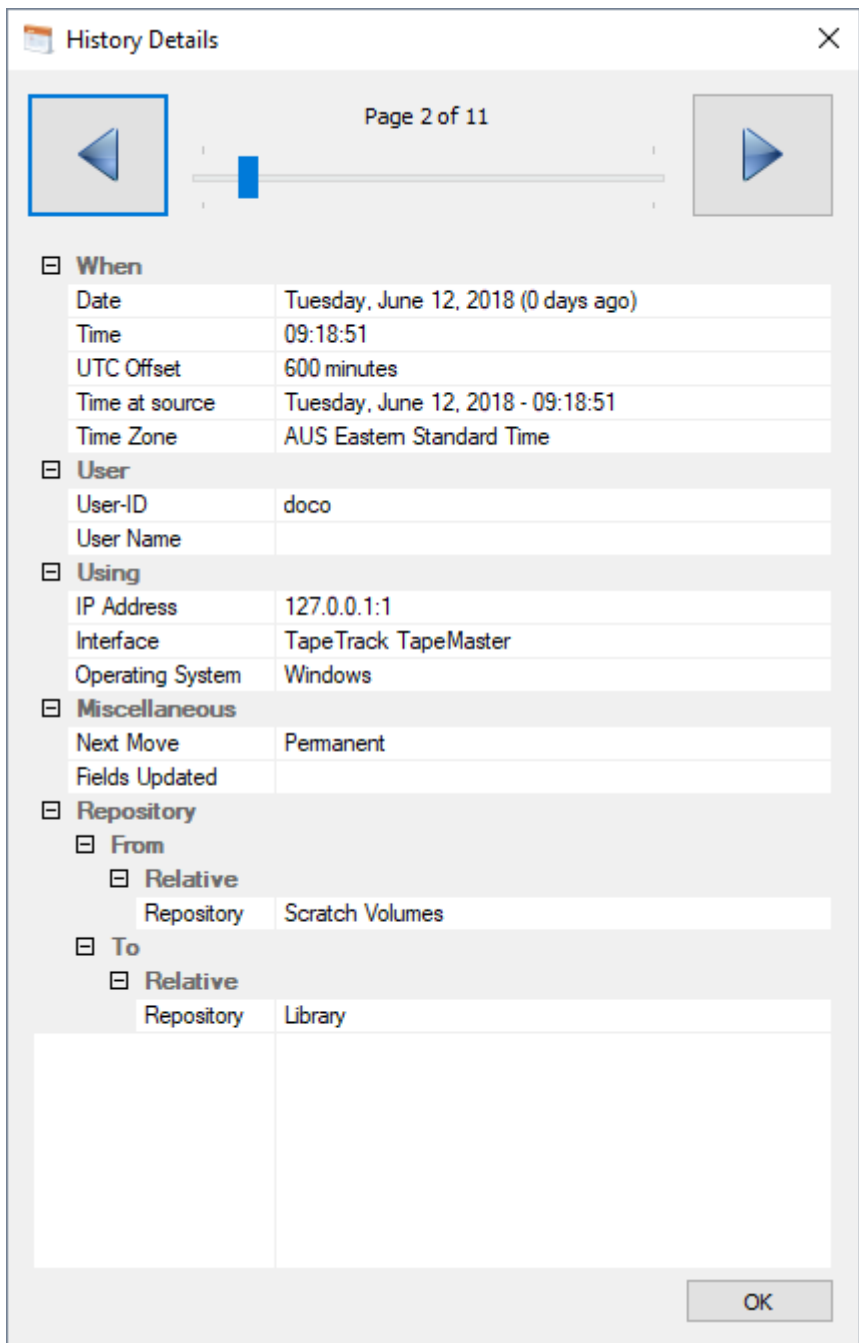
For each of these events, the date, time type and locations are listed.

Types of historical events include:

- Added - Creation of volume.
- Deleted - Removal of volume.
- Target - New Target location, volume place in a move.
- Scanned-Out - Scanning volume out to record leaving current repository.
- Scanned-In - Scanning in volume to confirm arrival at target repository.
- Date - Adding next move date to volume.

## History Details

Right clicking on a historical entry, or double clicking, and selecting **Details** will open a **History Details** window.

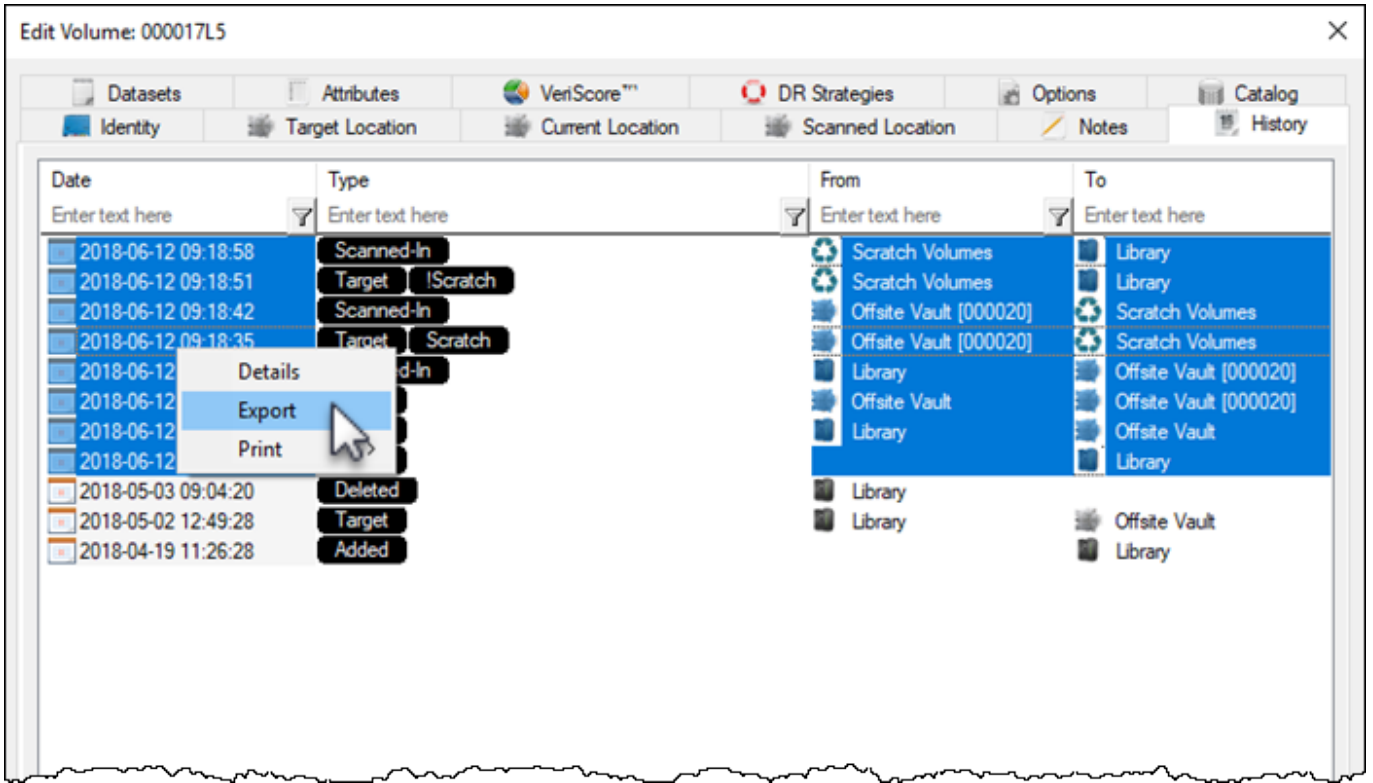


This provides a more verbose listing of the historical entry including:

- Dates and Times including UTC offset, source time and time zone.
- User performing the action including IP, TapeTrack software and operating system.
- Next Move date
- Locations including to, from and zone information if applicable.

## Exporting History

To export historical entries, select required entry or range select entries (ctrl + click, shift + click), right click and select Export and follow prompts to export to required file type.



### Export Sample

Export historical records to text file.

```

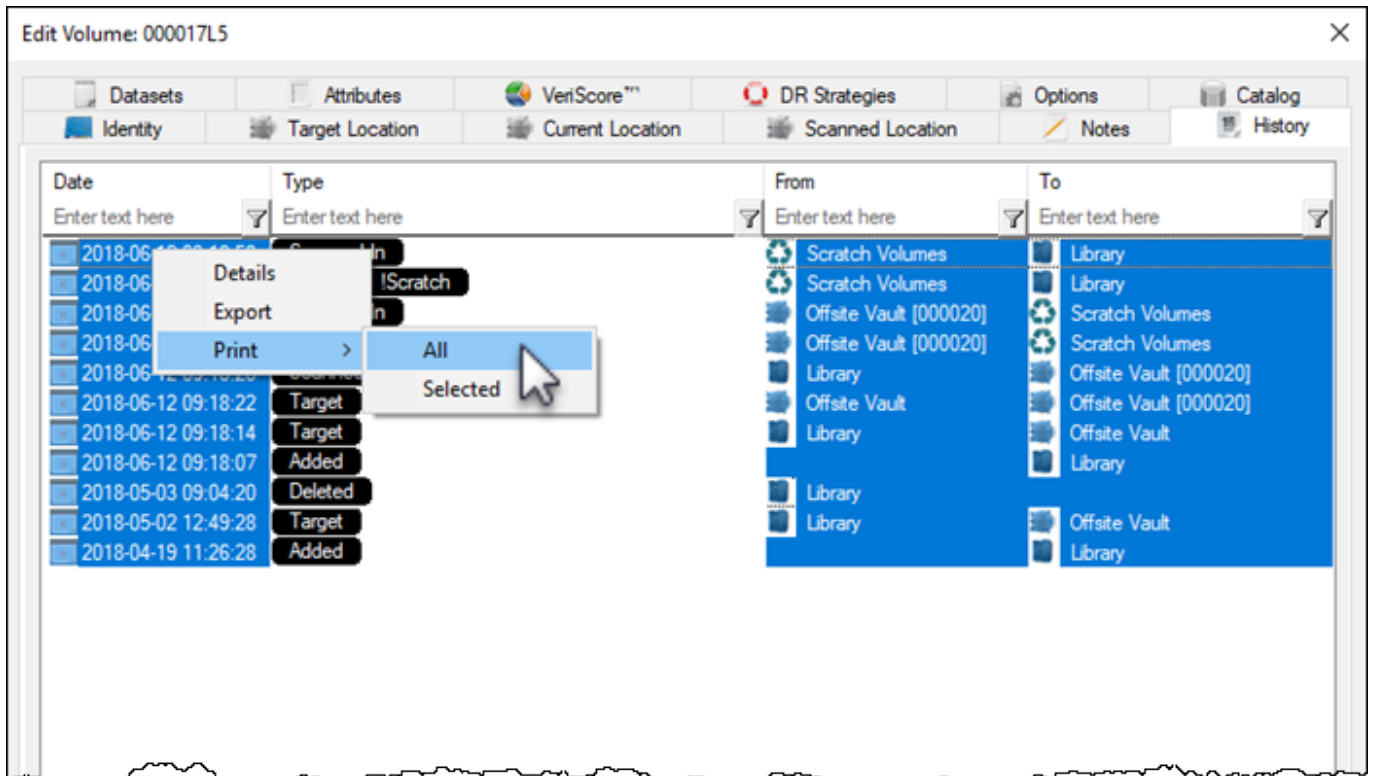
System: TapeTrack
Report Description: TapeTrack Volume History
Production Time: Thursday, May 10, 2018 - 12:02:18 (AUS Eastern Standard Time)
Report Width: 81 bytes

Date                Type                From                To
-----
2018-05-10 11:28:30 [Scanned-Out]                Library
2018-05-10 11:28:12 [Target][Date] Offsite Vault [000003] Library
2018-05-10 11:06:29 [Date]                Offsite Vault
[000003]
2018-05-10 11:06:22 [Scanned-In]    Library                Offsite Vault
[000003]
2018-05-10 11:06:08 [Target]                Offsite Vault        Offsite Vault
[000003]
2018-05-10 11:04:57 [Target]                Library                Offsite Vault
2018-05-10 11:04:52 [Added]                Library
2018-05-03 09:04:20 [Deleted]                Library
2018-05-02 12:49:28 [Target]                Library                Offsite Vault
2018-04-19 11:22:04 [Added]                Library
-----

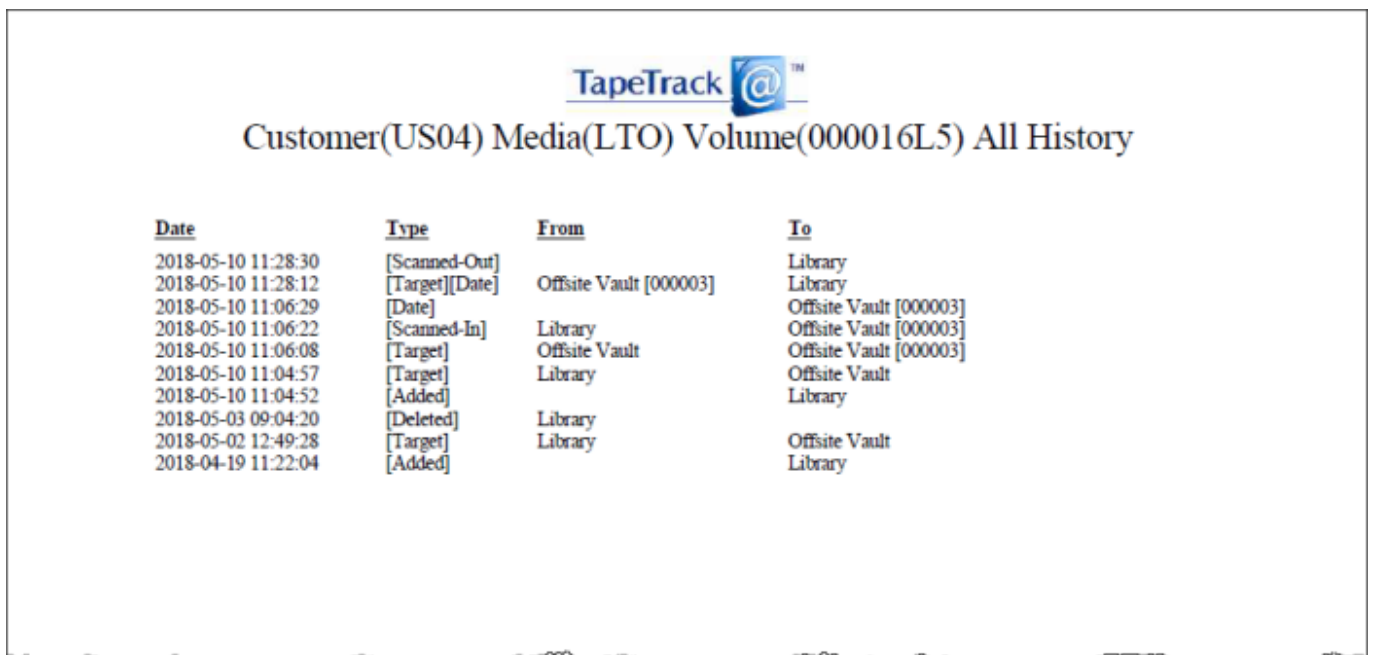
```

# Printing History

To export historical entries, select required entry or range select entries (ctrl + click, shift + click), right click and select Print and then Selected or All.



## Print Sample



From:

<https://rtfm.tapetrack.com/> - **TapeTrack Documentation**

Permanent link:

[https://rtfm.tapetrack.com/object/volume\\_history?rev=1525919784](https://rtfm.tapetrack.com/object/volume_history?rev=1525919784)

Last update: **2025/01/21 22:07**

