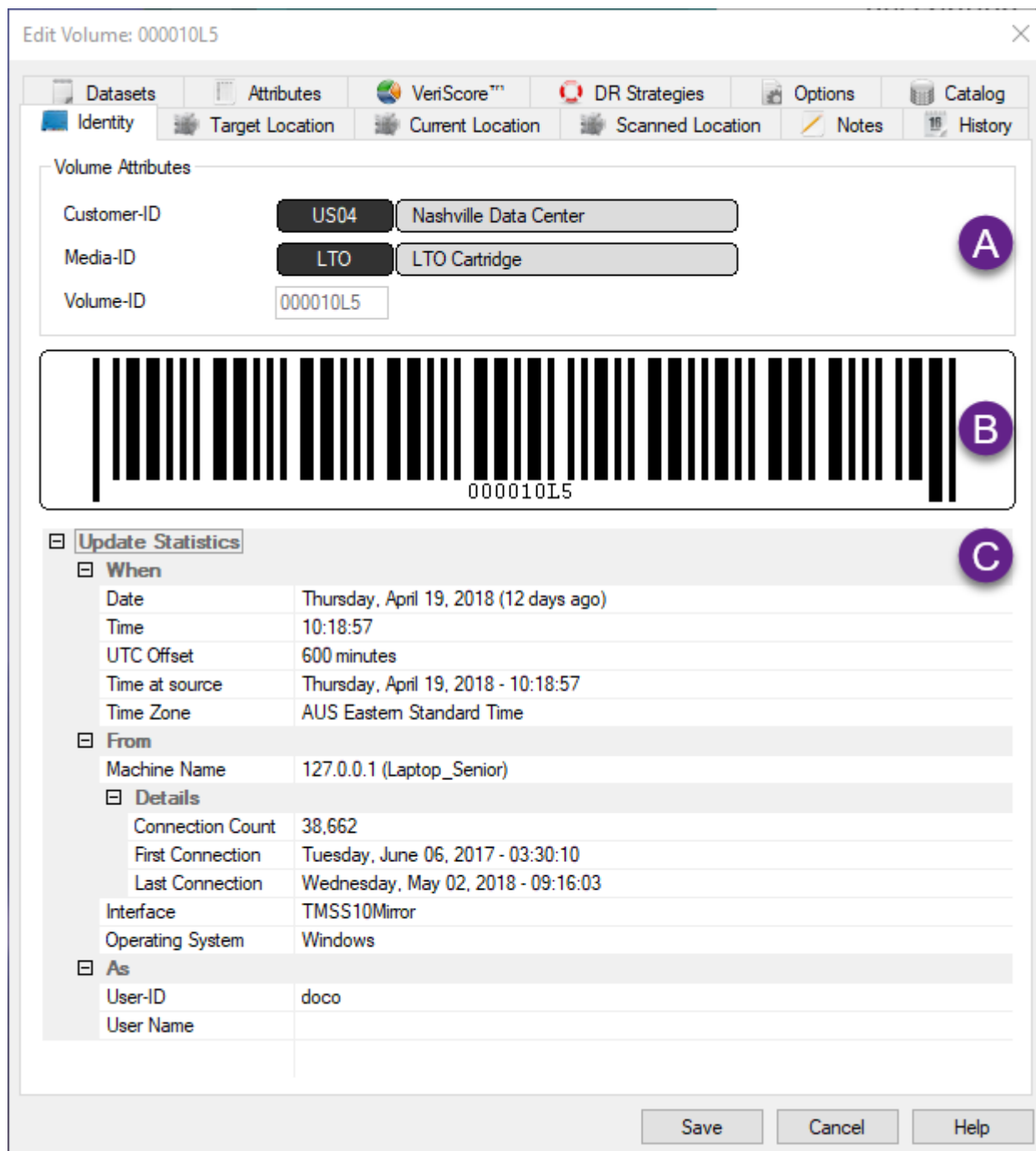


# Volume Identity

The **Identity** tab of the volumes properties displays the volume's unique identification attributes including Customer ID, Media ID and volume ID as well as other data specific to the volume's identity.



The **Volume Attributes** panel displays:

- Customer-ID and Description.
- Media-ID and Description.
- Volume ID.

The volume ID is set on creation of the volume and is then, in normal operation, a non editable field as are the Customer ID and Media ID fields.

The center panel shows a barcode image of the volume's ID.

Expanding the lower section **Update Statistics** displays information of when, where and who created the volume. These values are set automatically on creation of the volume and are non editable fields.

From:

<https://rtfm.tapetrack.com/> - **TapeTrack Documentation**

Permanent link:

[https://rtfm.tapetrack.com/object/volume\\_identity?rev=1525218561](https://rtfm.tapetrack.com/object/volume_identity?rev=1525218561)

Last update: **2025/01/21 22:07**

