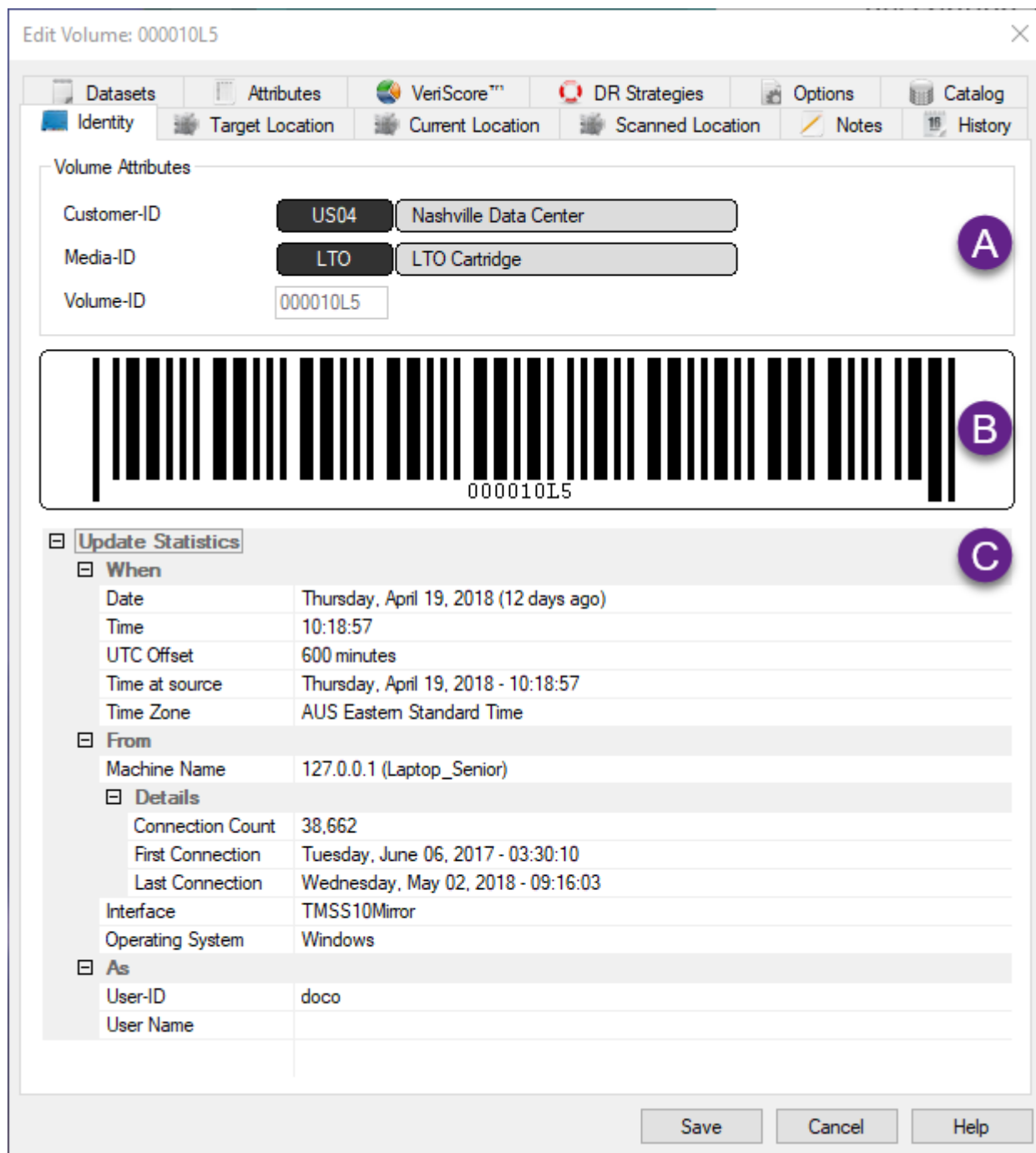


# Volume-Identity

The **Identity** tab of the volumes properties displays the volume's unique identification Attributes including Customer-ID, Media-ID and Volume-ID as well as other data specific to the volume's identity.



The **Volume Attributes** panel (A) displays:

- Customer-ID and Description.
- Media-ID and Description.
- Volume-ID.

The Volume-ID is set on creation of the volume and is then, in normal operation, a non editable field as are the Customer-ID and Media-ID fields.

The center panel (B) shows a barcode image of the volume's ID.

Expanding the lower section **Update Statistics** (C) displays information of when, where and who created the volume. These values are set automatically on creation of the volume and are non editable fields.

From:  
<https://rtfm.tapetrack.com/> - **TapeTrack Documentation**

Permanent link:  
[https://rtfm.tapetrack.com/object/volume\\_identity?rev=1565826381](https://rtfm.tapetrack.com/object/volume_identity?rev=1565826381)

Last update: **2025/01/21 22:07**

