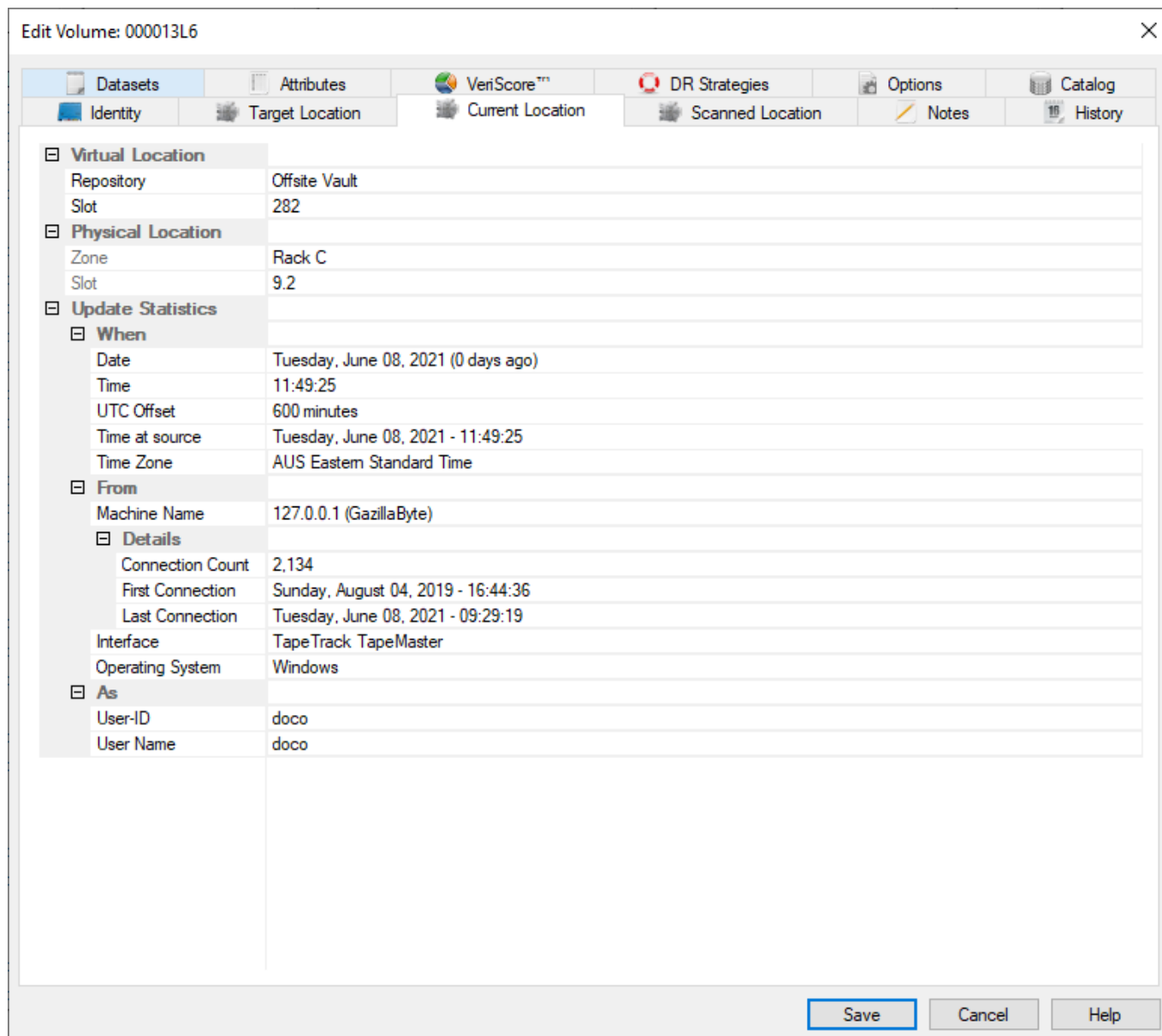


# Volume Scanned Location

A **Volumes** Current Location is the last **Repository** the **Volume** was confirmed at. If the Current Location matches the Target Location it is also the physical location the **Volume** should be at.

If **Slotting** is enabled the Current Location will include the **Slot** allocation details as well.



The Virtual Location panel displays:

- **Repository**.
- **Slot** Number allocation.

If **Slotting** is not enabled, or no **Zones** mapped to the **Repository**, **Slot** number field will not be displayed.

The Physical Location displays:

- The **Zone**.

- [Slot](#) location

The **Physical Location** is a physical representation of where the [Slot](#) is located based on racking parameters, such as number of drawers/shelves and [Slots](#) per drawer/shelf, to enable users to easily locate the Current Location. If [Slotting](#) is not enabled, or no [Zones](#) mapped to the [Repository](#), [Zone](#) will display as No-Alloc, [Slot](#) will display as zero.

Expanding the lower section **Update Statistics** displays information of when, where and who placed the [Volume](#) into a move to the Target Location. These values are set automatically on creation of the [Volume](#) and are non editable fields.

## See Also

- [Repository](#)
- [Target Location](#)
- [Current Location](#)

From:

<https://rtfm.tapetrack.com/> - **TapeTrack Documentation**

Permanent link:

[https://rtfm.tapetrack.com/object/volume\\_scanned](https://rtfm.tapetrack.com/object/volume_scanned)

Last update: **2025/01/21 22:07**

