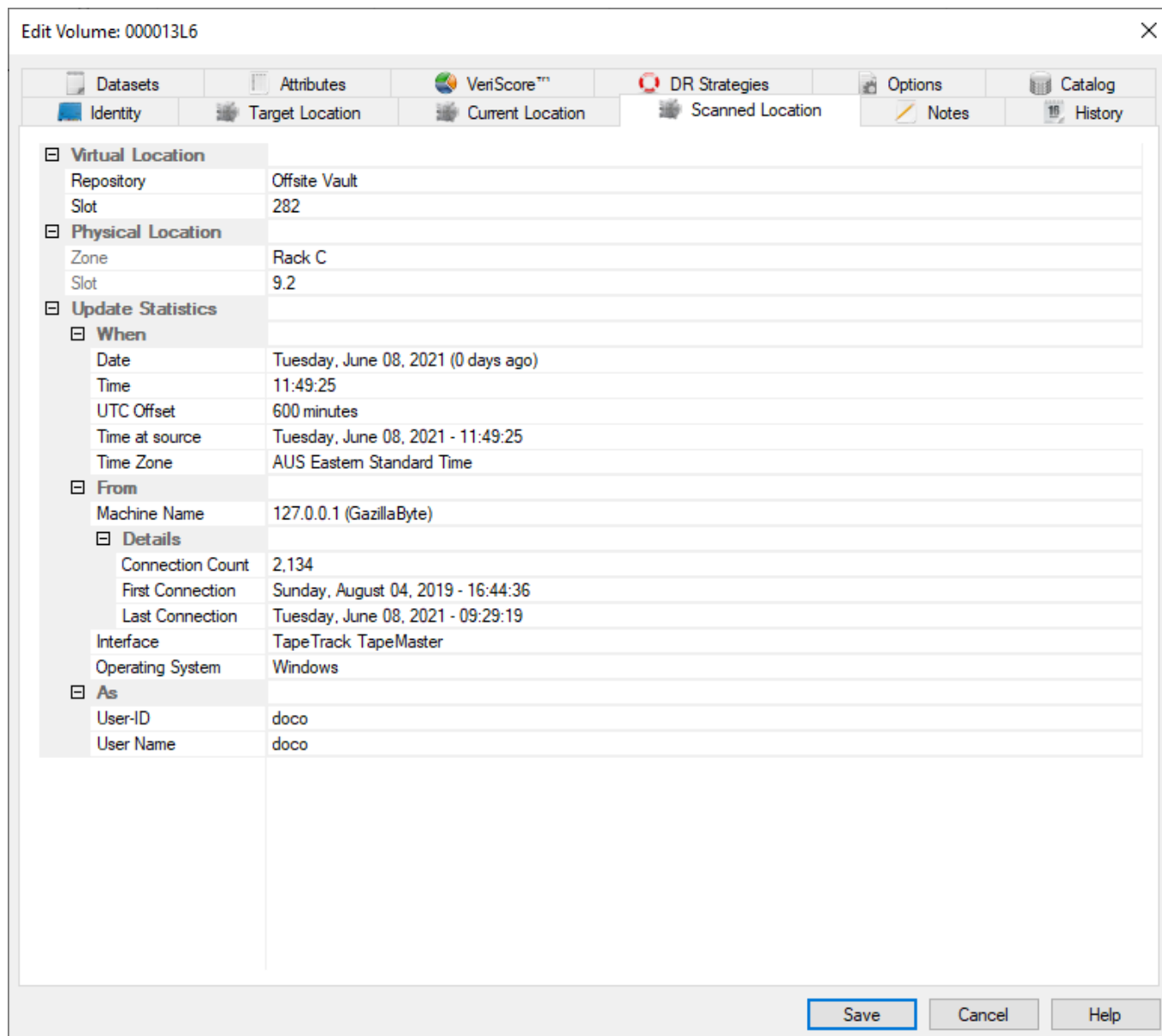


# Volume Scanned Location

The volume scanned location displays the last repository that the volume was confirmed at.

If slotting is enabled the target location will, when a slot is assigned, include the slot allocation details as well.



The **Relative location** panel (A) displays:

- Repository-ID and Description.
- Slot Number allocated.
- Maximum number of slots assigned to the target repository.

If slotting is not enabled, or no zones mapped to the repository, slot number and maximum will display as zero.

The **Absolute Location** (B) displays:

- The Zone-ID.
- Level location.
- Slot location

The absolute location is a physical representation of where the slot is located based on racking parameters, such as number or drawers/shelves and slots per drawer/shelf, to enable users to easily locate the volume. If slotting is not enabled, or no zones mapped to the repository, Zone-ID will be blank, level and slot will display as zero.

Expanding the lower section **Update Statistics** (C) displays information of when, where and who scanned the volume into the location. These values are set automatically when the volume is scanned in and are non editable fields.

## See Also

- [Repository](#)
- [Target Location](#)
- [Current Location](#)

From:  
<https://rtfm.tapetrack.com/> - **TapeTrack Documentation**

Permanent link:  
[https://rtfm.tapetrack.com/object/volume\\_scanned?rev=1576192584](https://rtfm.tapetrack.com/object/volume_scanned?rev=1576192584)

Last update: **2025/01/21 22:07**

