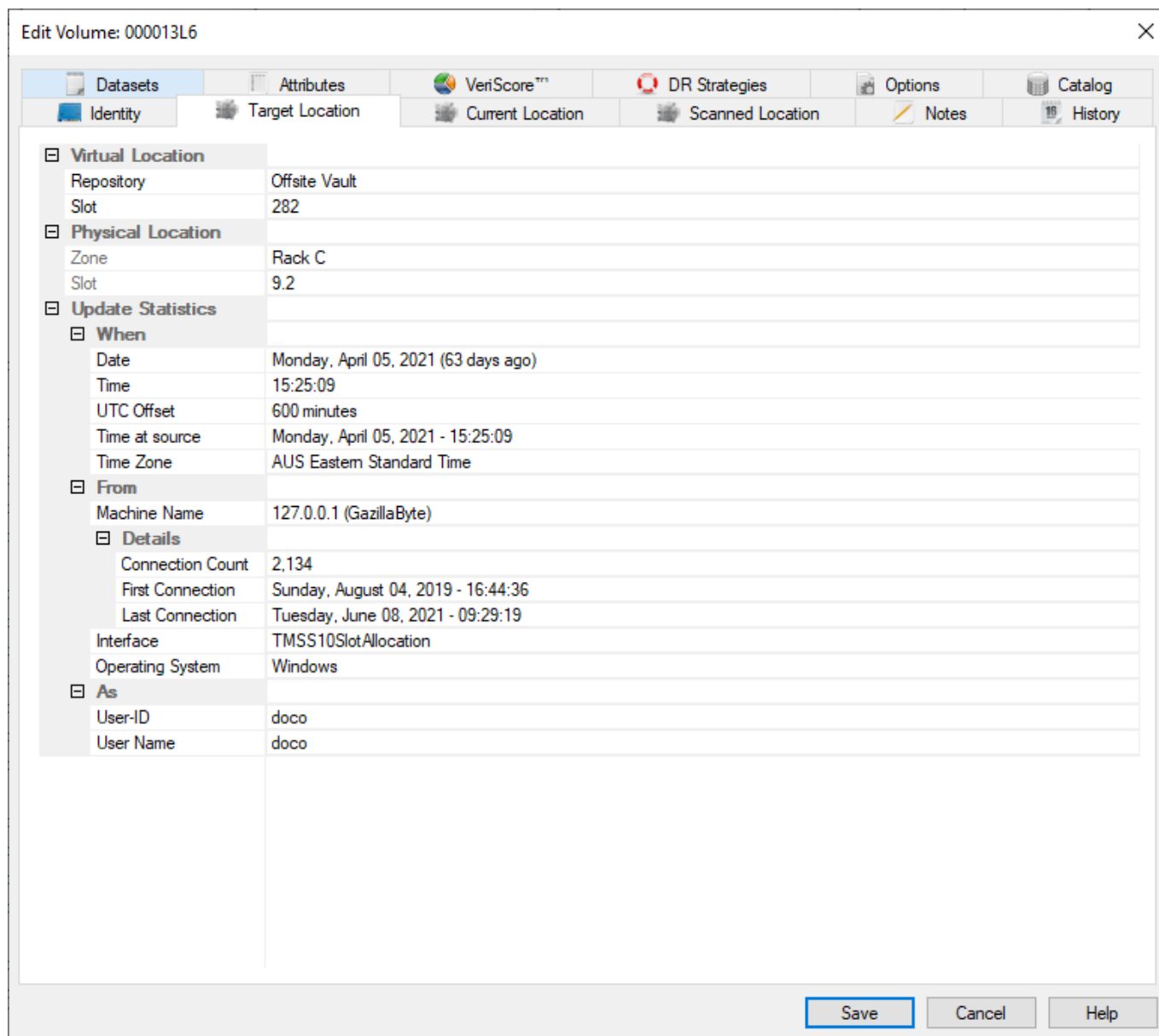


Volume Target

When a volume is placed in a move from its' current location to another location, that other location is a target location until the volume is has a confirmed arrival.

If slotting is enabled the target location will, when a slot is assigned, include the slot allocation details as well.



The **Relative location** panel (A) displays:

- Repository-ID and Description.
- Slot Number allocated.
- Maximum number of slots assigned to the target repository.

If slotting is not enabled, or no zones mapped to the repository, slot number and maximum will display as zero.

The **Absolute Location** (B) displays:

- The Zone-ID.
- Level location.
- Slot loction

The absolute location is a physical representation of where the slot is located based on racking parameters, such as number or drawers/shelves and slots per drawer/shelf, to enable users to easily locate the target location. If slotting is not enabled, or no zones mapped to the repository, Zone-ID will be blank, level and slot will display as zero.

Expanding the lower section **Update Statistics** (C) displays information of when, where and who placed the volume into a move to the target location. These values are set automatically on creation of the volume and are non editable fields.

From:
<https://rtfm.tapetrack.com/> - **TapeTrack Documentation**

Permanent link:
https://rtfm.tapetrack.com/object/volume_target?rev=1525224088

Last update: **2025/01/21 22:07**

