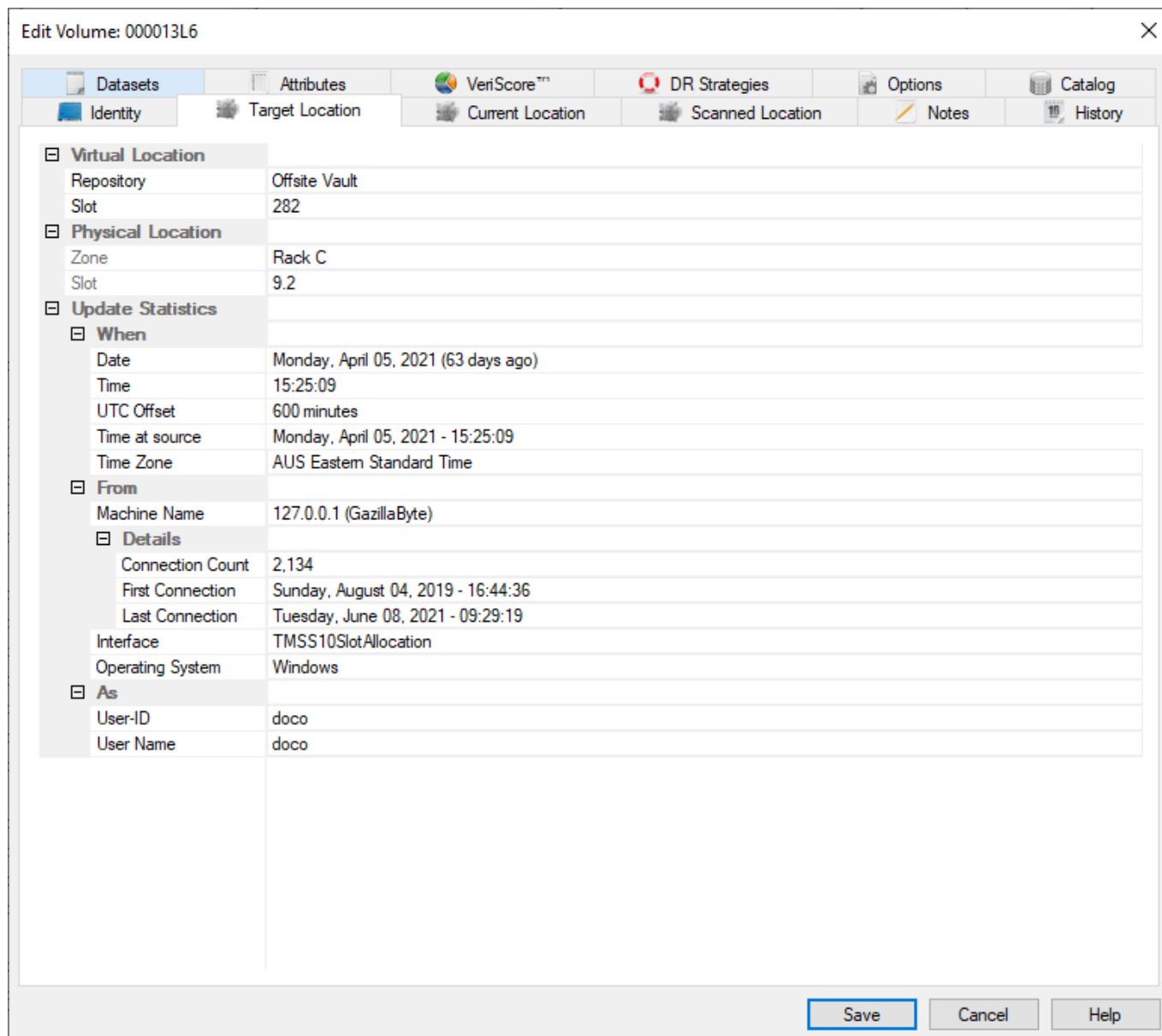


# Volume Target Location

When a volume is placed in a move from its' current location to another location, that other location is a target location.

Once the volume is confirmed at the target location, the volumes current location is updated to match the target location, removing the volumes move (M) flag and move status.

If slotting is enabled the target location will, when a slot is assigned, include the slot allocation details as well.



The **Relative location** panel (A) displays:

- Repository-ID and Description.
- Slot Number allocated.
- Maximum number of slots assigned to the target repository.

If slotting is not enabled, or no zones mapped to the repository, slot number and maximum will

display as zero.

The **Absolute Location** (B) displays:

- The Zone-ID.
- Level location.
- Slot location

The absolute location is a physical representation of where the slot is located based on racking parameters, such as number or drawers/shelves and slots per drawer/shelf, to enable users to easily locate the target location. If slotting is not enabled, or no zones mapped to the repository, Zone-ID will be blank, level and slot will display as zero.

Expanding the lower section **Update Statistics** (C) displays information of when, where and who placed the volume into a move to the target location. These values are set automatically on creation of the volume and are non editable fields.

## See Also

- [Repository](#)
- [Current Location](#)
- [Scanned Location](#)

From:

<https://rtfm.tapetrack.com/> - **TapeTrack Documentation**

Permanent link:

[https://rtfm.tapetrack.com/object/volume\\_target?rev=1556982902](https://rtfm.tapetrack.com/object/volume_target?rev=1556982902)

Last update: **2025/01/21 22:07**

