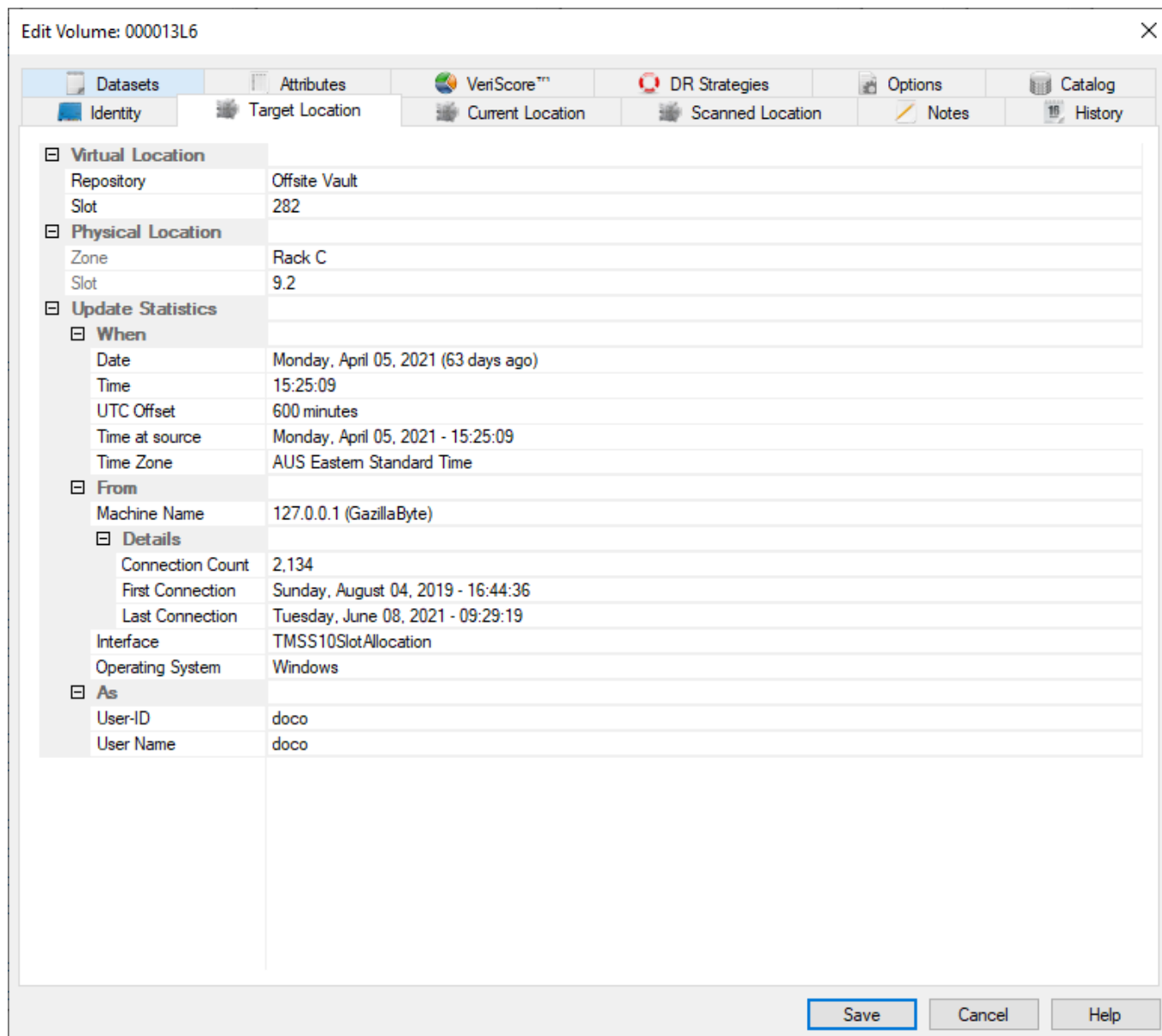


Volume Target Location

When a **Volume** is placed in a move from its' Current Location to another Location, that other Location is a Target Location.

Once the **Volume** is confirmed at the Target Location, the **Volume's** Current Location is updated to match the Target Location, removing the **Volume's** Move (M) **Flag** and Move Status.

If Slotting is enabled the Target Location will, when a Slot is assigned, include the Slot Allocation details as well.



The **Relative location** panel (A) displays:

- **Repository-ID** and **Description**.
- Slot Number allocated.
- Maximum number of Slots assigned to the Target **Repository**.

If slotting is not enabled, or no zones mapped to the **Repository**, Slot number and maximum will

display as zero.

The **Absolute Location** (B) displays:

- The Zone-ID.
- Level location.
- Slot location

The absolute location is a physical representation of where the Slot is located based on racking parameters, such as number or drawers/shelves and Slots per drawer/shelf, to enable users to easily locate the Target Location. If Slotting is not enabled, or no Zones mapped to the [Repository](#), Zone-ID will be blank, level and Slot will display as zero.

Expanding the lower section **Update Statistics** (C) displays information of when, where and who placed the [Volume](#) into a move to the Target Location. These values are set automatically on creation of the [Volume](#) and are non editable fields.

See Also

- [Repository](#)
- [Current Location](#)
- [Scanned Location](#)

From:

<https://rtfm.tapetrack.com/> - **TapeTrack Documentation**

Permanent link:

https://rtfm.tapetrack.com/object/volume_target?rev=1578360984

Last update: **2025/01/21 22:07**

