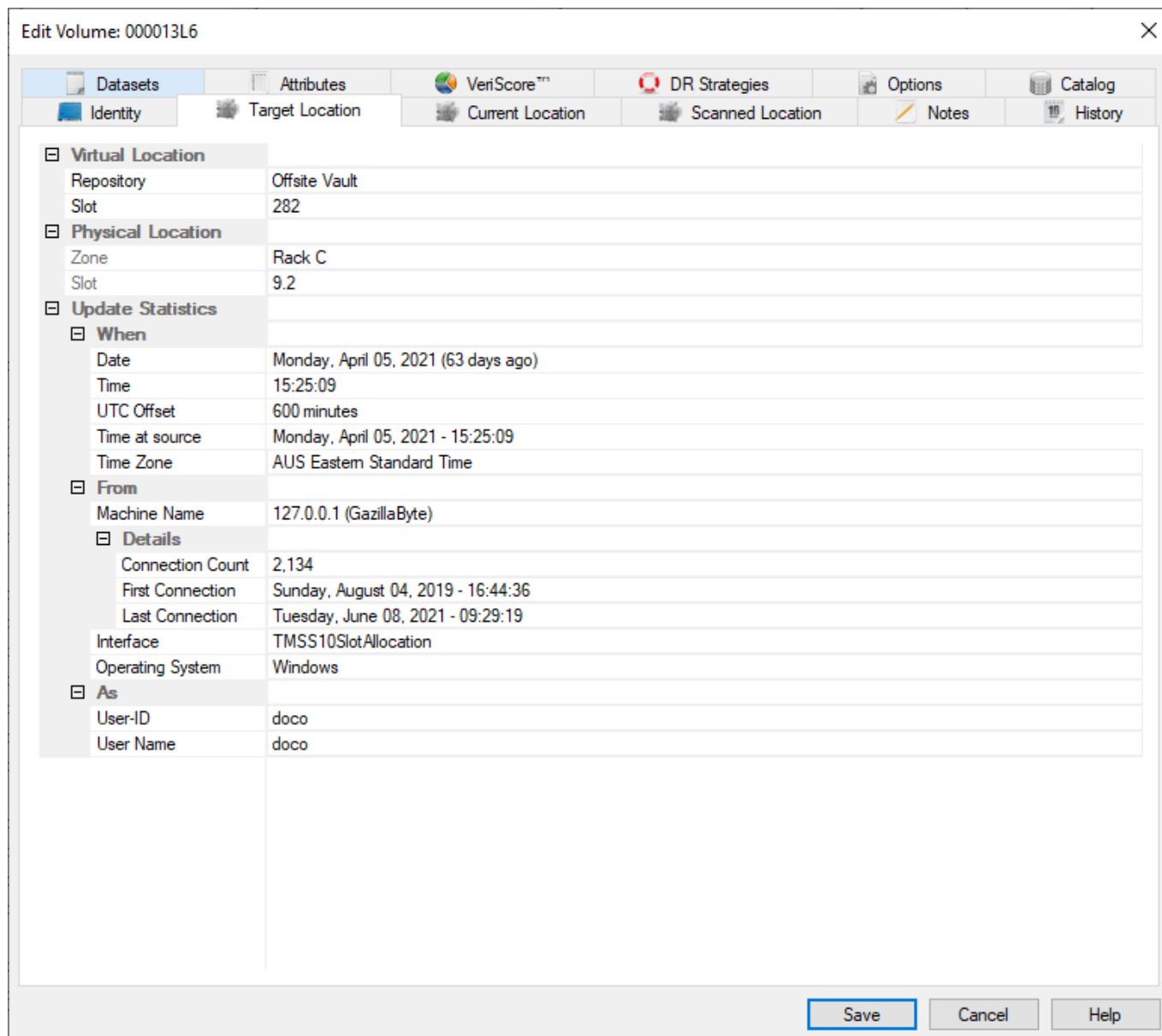


Volume Target Location

When a [Volume](#) is placed in a move from its' Current Location to another Location, that other Location is a Target Location.

Once the [Volume](#) is confirmed at the Target Location, the [Volume's](#) Current Location is updated to match the Target Location, removing the [Volume's](#) Move (M) [Flag](#) and Move Status.

If Slotting is enabled the Target Location will, when a Slot is assigned, include the Slot Allocation details as well.



The **Virtual location** panel displays:

- Target [Repository](#).
- Slot Number allocated (if Slotting is enabled and Volume is allocated to a Slot).

If slotting is not enabled, or no zones mapped to the [Repository](#), Slot number will display as zero.

The **Physical Location** displays:

- The Zone.
- Level location.
- Slot location

The physical location is a physical representation of where the Slot is located based on racking parameters, such as number or drawers/shelves and Slots per drawer/shelf, to enable users to easily locate the Target Location. If Slotting is not enabled, or no Zones mapped to the [Repository](#), Zone will be displayed as No-Alloc, Slot will display as zero.

Expanding the lower section **Update Statistics** (C) displays information of when, where and who placed the [Volume](#) into a move to the Target Location. These values are set automatically on creation of the [Volume](#) and are non editable fields.

See Also

- [Repository](#)
- [Current Location](#)
- [Scanned Location](#)

From:
<https://rtfm.tapetrack.com/> - **TapeTrack Documentation**

Permanent link:
https://rtfm.tapetrack.com/object/volume_target?rev=1623113859

Last update: **2025/01/21 22:07**

