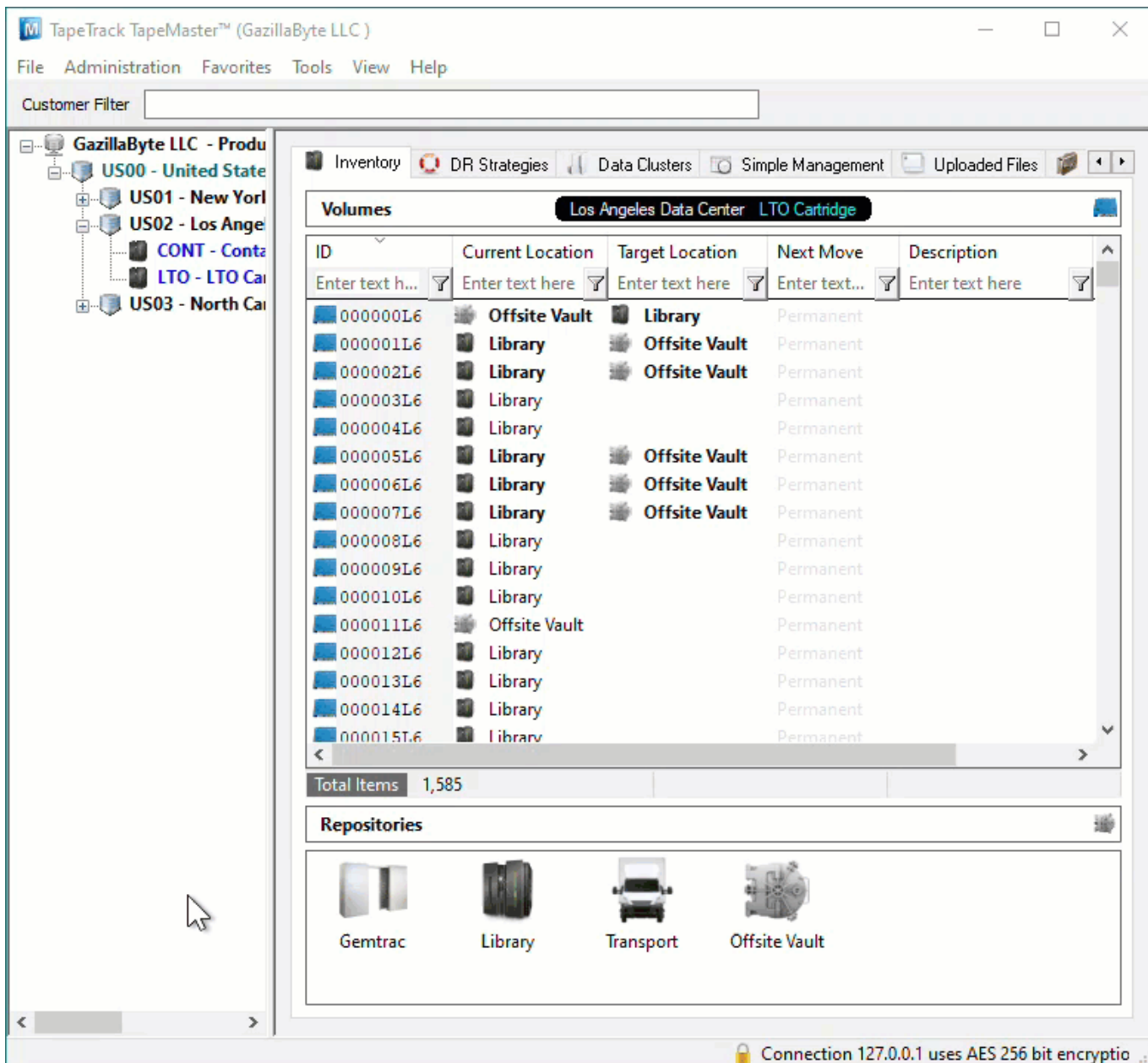


Sort Sequence

The [Repository](#) Option Sort Sequence allows the display order of the [Repositories](#) to be customized.

To set the sort sequence, right click the required Repository and select Properties.

Adjust the Sort Sequence value to determine the sort order and click Save to update.



Sort Sequence Options

The Sort Sequence is set numerically from 0 to 255.

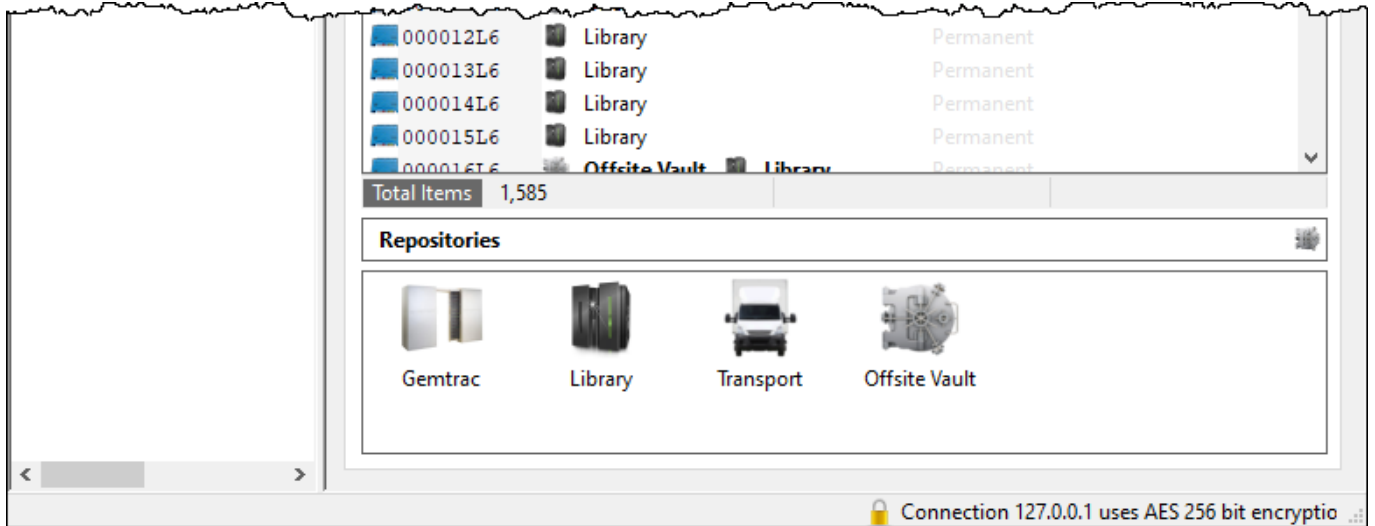
[Repositories](#) will be displayed in numerical order, lowest to highest, left to right.

The Sort Sequence values do not have to be sequential.

[options](#), [repository options](#)

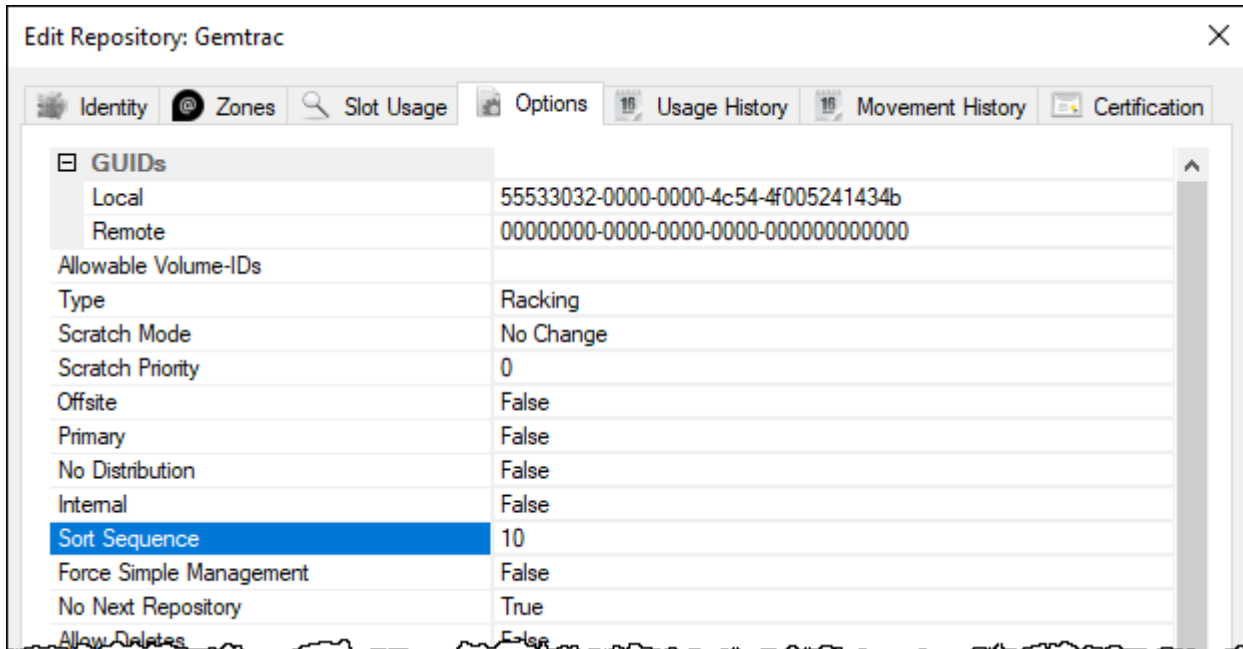
Example Sorting

TapeMaster Display



Repository Sort Sequence

- Gemtrac: 10
- Library: 20
- Transport: 30
- Vault: 43



Edit Repository: Library

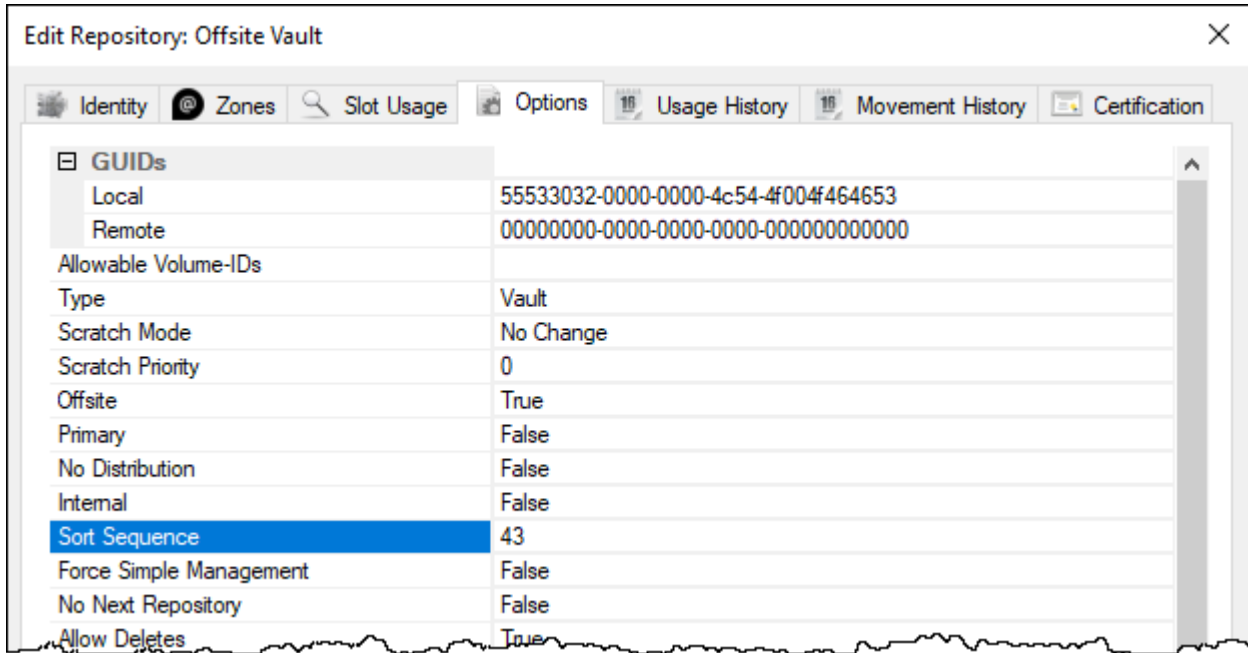
Identity Zones Slot Usage Options Usage History Movement History Certification

| | |
|-------------------------|--------------------------------------|
| GUIDs | |
| Local | 55533032-0000-0000-4c54-4f004c494252 |
| Remote | 00000000-0000-0000-0000-000000000000 |
| Allowable Volume-IDs | |
| Type | Library |
| Scratch Mode | No Change |
| Scratch Priority | 0 |
| Offsite | False |
| Primary | False |
| No Distribution | False |
| Internal | False |
| Sort Sequence | 20 |
| Force Simple Management | False |
| No Next Repository | False |
| Allow Deletes | False |

Edit Repository: Transport

Identity Zones Slot Usage Options Usage History Movement History Certification

| | |
|-------------------------|--------------------------------------|
| GUIDs | |
| Local | 55533032-0000-0000-4c54-4f005452414e |
| Remote | 00000000-0000-0000-0000-000000000000 |
| Allowable Volume-IDs | |
| Type | Transportation |
| Scratch Mode | No Change |
| Scratch Priority | 0 |
| Offsite | False |
| Primary | False |
| No Distribution | False |
| Internal | False |
| Sort Sequence | 30 |
| Force Simple Management | False |
| No Next Repository | True |
| Allow Deletes | False |



The screenshot shows a web interface titled "Edit Repository: Offsite Vault". At the top, there are several tabs: Identity, Zones, Slot Usage, Options (which is active), Usage History, Movement History, and Certification. Below the tabs is a table of configuration options. The "Sort Sequence" option is highlighted in blue and has a value of 43. Other options include GUIDs (Local and Remote), Allowable Volume-IDs, Type (Vault), Scratch Mode (No Change), Scratch Priority (0), Offsite (True), Primary (False), No Distribution (False), Internal (False), Force Simple Management (False), No Next Repository (False), and Allow Deletes (True).

| Option | Value |
|-------------------------|--------------------------------------|
| GUIDs | |
| Local | 55533032-0000-0000-4c54-4f004f464653 |
| Remote | 00000000-0000-0000-0000-000000000000 |
| Allowable Volume-IDs | |
| Type | Vault |
| Scratch Mode | No Change |
| Scratch Priority | 0 |
| Offsite | True |
| Primary | False |
| No Distribution | False |
| Internal | False |
| Sort Sequence | 43 |
| Force Simple Management | False |
| No Next Repository | False |
| Allow Deletes | True |

From: <https://rtfm.tapetrack.com/> - **TapeTrack Documentation**

Permanent link: https://rtfm.tapetrack.com/options/repository/sort_sequence?rev=1614123745

Last update: **2025/01/21 22:07**

