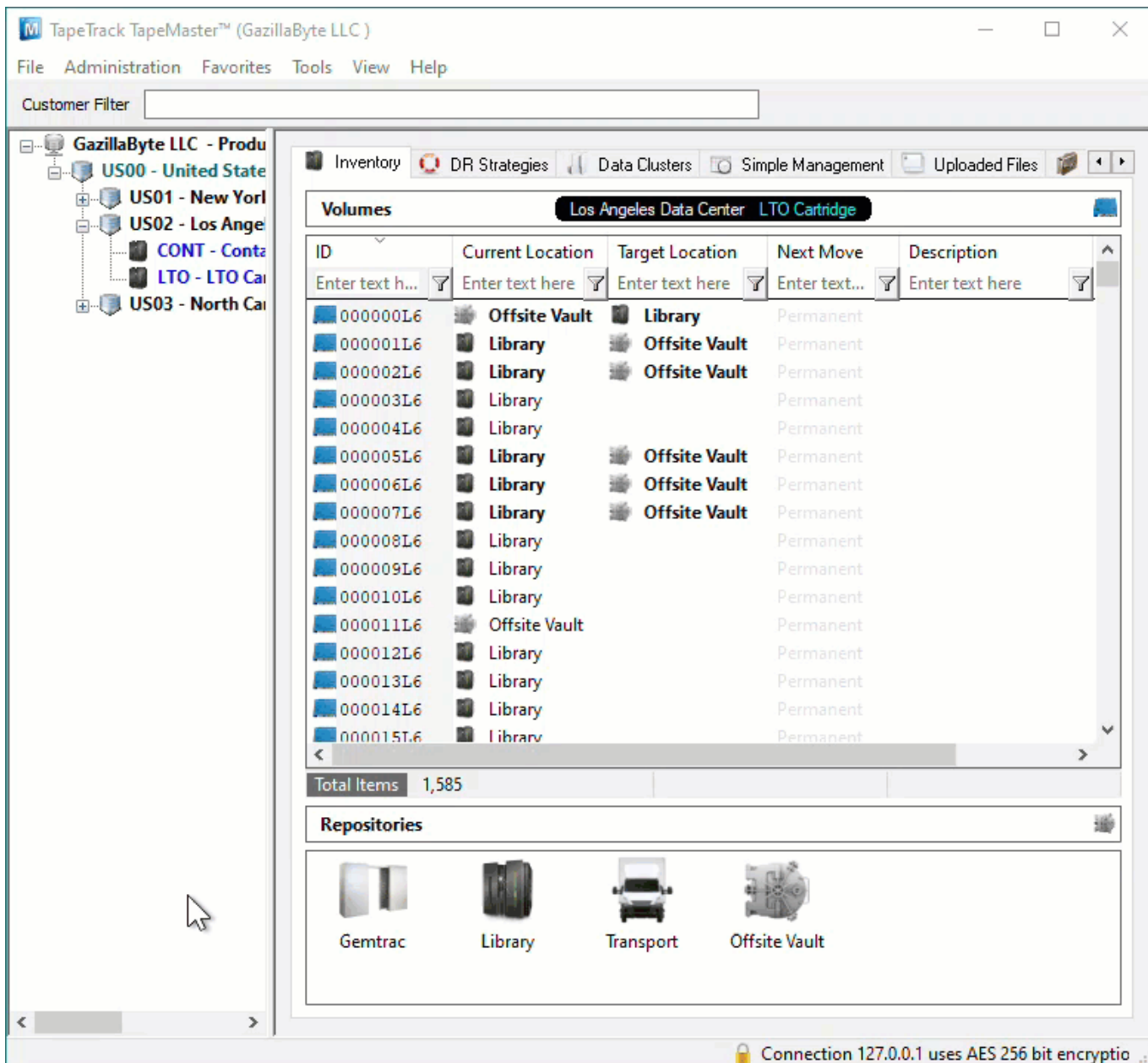


# Sort Sequence

The [Repository](#) Option Sort Sequence allows the display order of the [Repositories](#) to be customized.

To set the sort sequence, right click the required Repository and select Properties.

Adjust the Sort Sequence value to determine the sort order and click Save to update.



## Sort Sequence Options

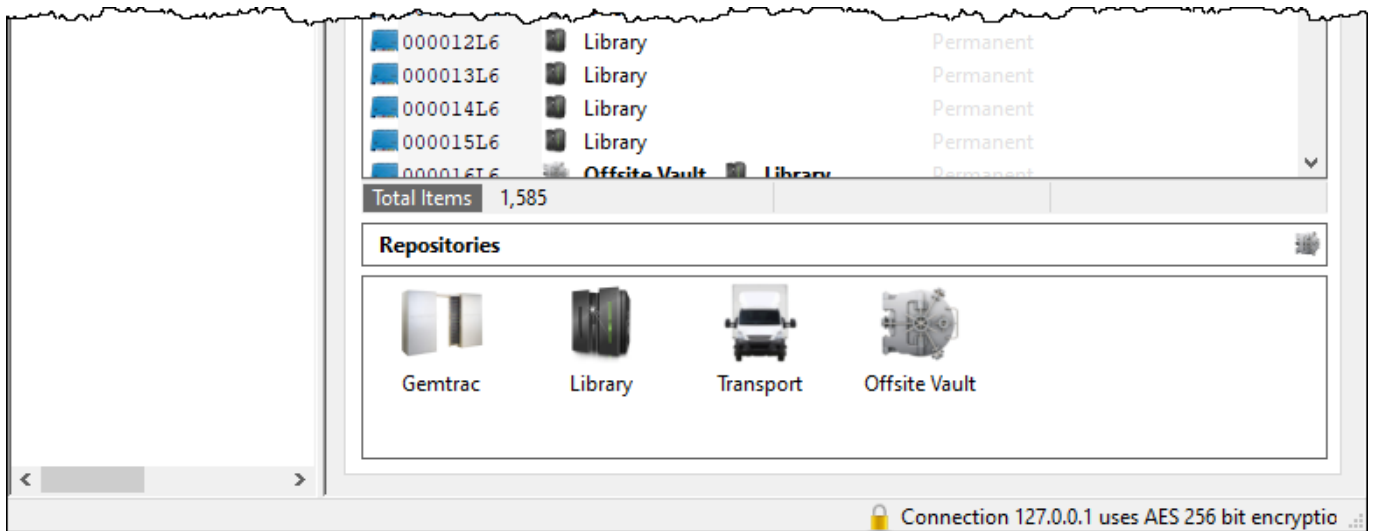
The Sort Sequence is set numerically from 0 to 255.

[Repositories](#) will be displayed in numerical order, lowest to highest, left to right.

The Sort Sequence values do not have to be sequential.

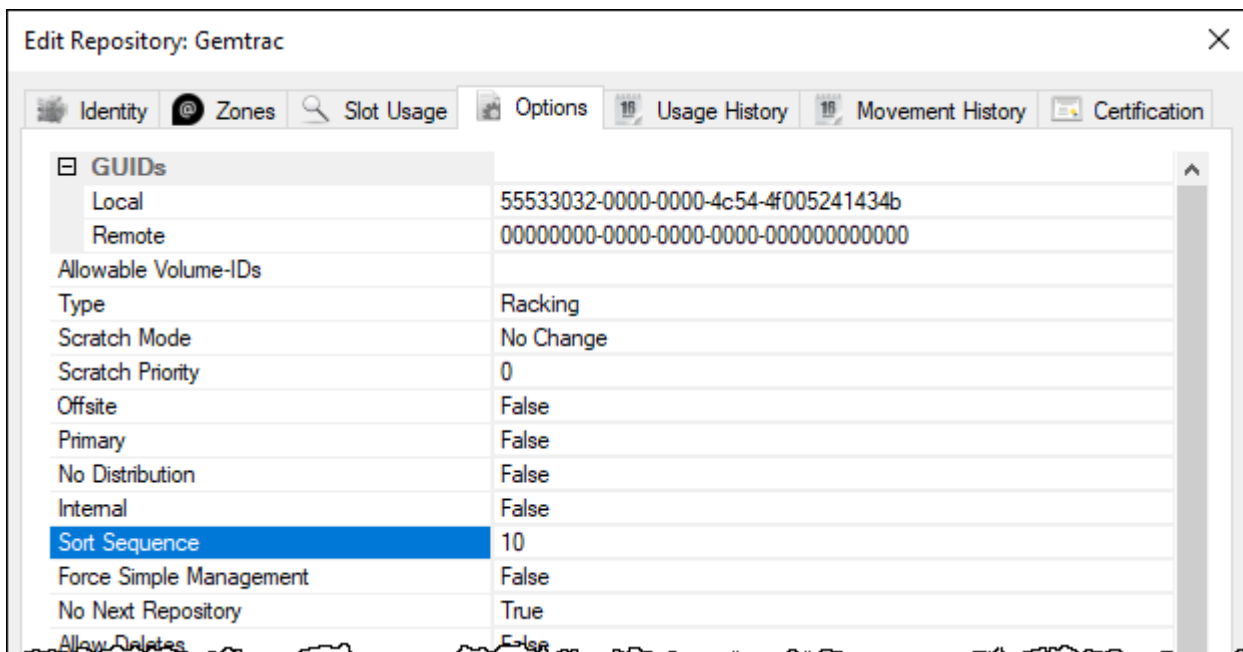
# Example Sorting Order

## TapeMaster Display



## Repository Sort Sequence

- Gemtrac: 10
- Library: 20
- Transport: 30
- Vault: 43



**Edit Repository: Library** [Close]

Identity [Zones] [Slot Usage] [Options] [Usage History] [Movement History] [Certification]

GUIDs	
Local	55533032-0000-0000-4c54-4f004c494252
Remote	00000000-0000-0000-0000-000000000000
Allowable Volume-IDs	
Type	Library
Scratch Mode	No Change
Scratch Priority	0
Offsite	False
Primary	False
No Distribution	False
Internal	False
<b>Sort Sequence</b>	<b>20</b>
Force Simple Management	False
No Next Repository	False
Allow Deletes	False

**Edit Repository: Transport** [Close]

Identity [Zones] [Slot Usage] [Options] [Usage History] [Movement History] [Certification]

GUIDs	
Local	55533032-0000-0000-4c54-4f005452414e
Remote	00000000-0000-0000-0000-000000000000
Allowable Volume-IDs	
Type	Transportation
Scratch Mode	No Change
Scratch Priority	0
Offsite	False
Primary	False
No Distribution	False
Internal	False
<b>Sort Sequence</b>	<b>30</b>
Force Simple Management	False
No Next Repository	True
Allow Deletes	False

GUIDs	
Local	55533032-0000-0000-4c54-4f004f464653
Remote	00000000-0000-0000-0000-000000000000
Allowable Volume-IDs	
Type	Vault
Scratch Mode	No Change
Scratch Priority	0
Offsite	True
Primary	False
No Distribution	False
Internal	False
<b>Sort Sequence</b>	<b>43</b>
Force Simple Management	False
No Next Repository	False
Allow Deletes	True

[options, repository options](#)

From: <https://rtfm.tapetrack.com/> - **TapeTrack Documentation**

Permanent link: [https://rtfm.tapetrack.com/options/repository/sort\\_sequence?rev=1614125905](https://rtfm.tapetrack.com/options/repository/sort_sequence?rev=1614125905)

Last update: **2025/01/21 22:07**

