

# Printing Unqualified Barcode Labels

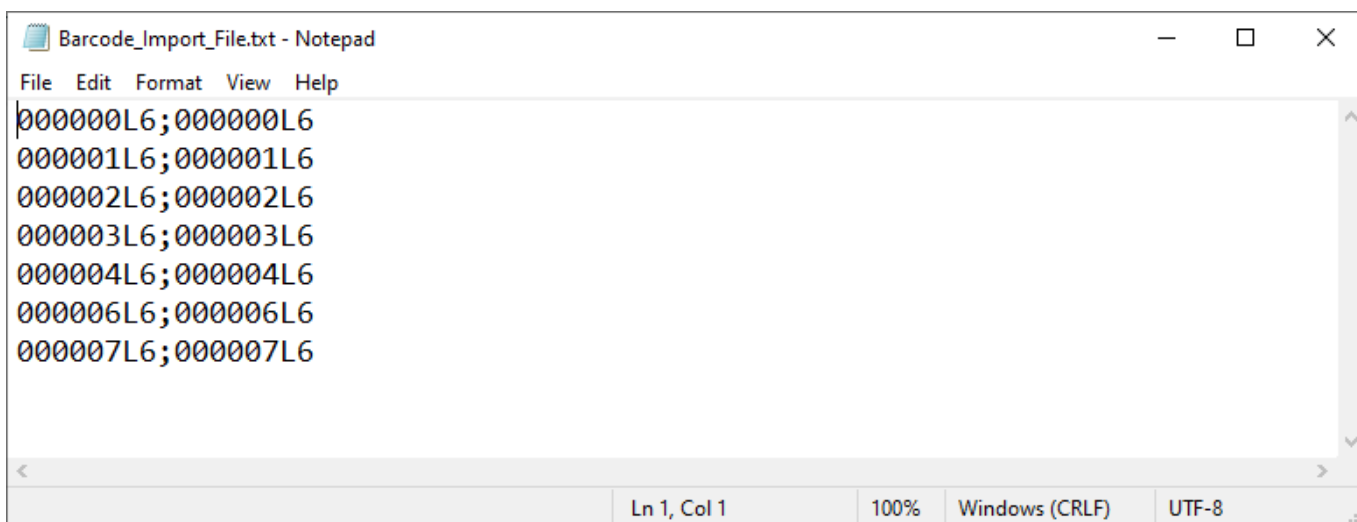
Printing Unqualified Barcodes with TapeTrack Barcode Printer is accomplished by loading the Barcodes via a text file.

## Creating The Barcode Text File

Information in the text file has the format of barcode : text\_under\_barcode, one barcode per line.

The Barcode Text File can be created several different ways, which method is best used depends on the quantity of Barcode labels required.

If only a couple of labels are required, the easiest method is to use a text editor like Notepad to manually type the labels required.



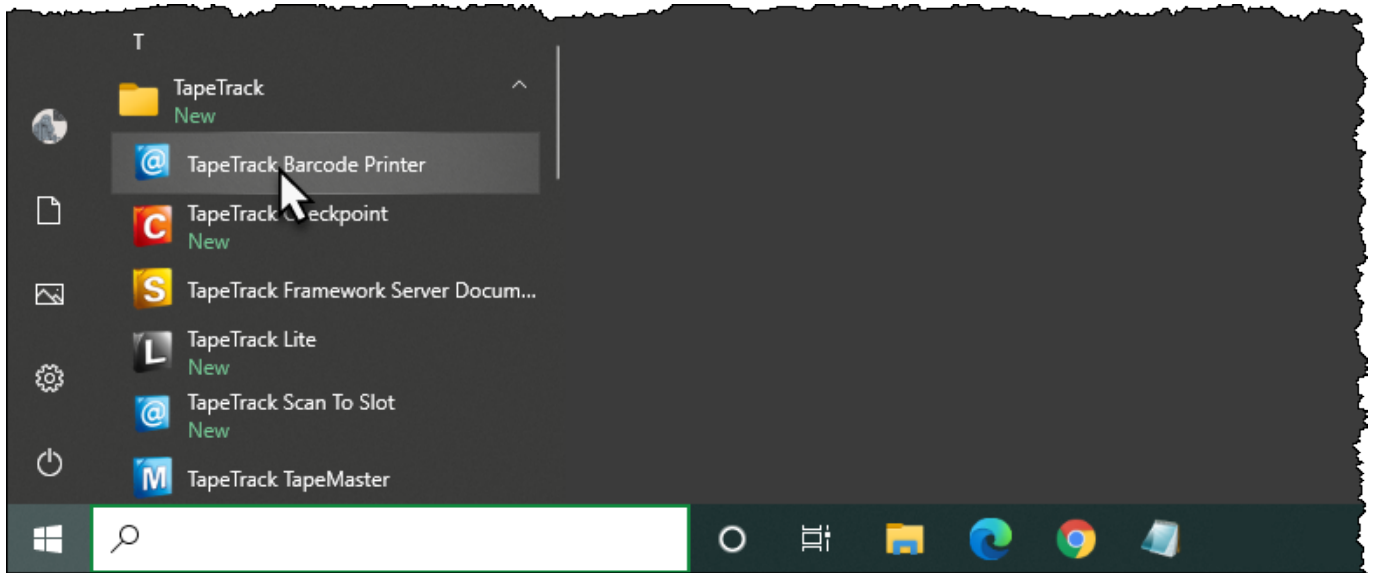
```
Barcode_Import_File.txt - Notepad
File Edit Format View Help
000000L6;000000L6
000001L6;000001L6
000002L6;000002L6
000003L6;000003L6
000004L6;000004L6
000006L6;000006L6
000007L6;000007L6
Ln 1, Col 1 100% Windows (CRLF) UTF-8
```

If a large number of Barcode Labels using Excel to create the required values for the text file.

- Selecting the Volumes in TapeMaster and copying values to your clipboard by right clicking the highlighted Volumes and selecting Edit → Copy → Unqualified Volumes.
- Open Excel and paste Volume-ID's into an Excel spreadsheet column A
- Add ; to column B and drag cell to auto fill the cells next to column A values
- Use cell formulas to concatenate the cell values to one column using formula =CONCAT(A1,B1,A1) to create the barcode;barcode format.
- Copy the concatenated column and paste into a Notepad file, saving under a known name and location.

## Opening The Barcode Printer

Open the Barcode Printer via the Windows Start Menu at TapeTrack → Barcode Printer

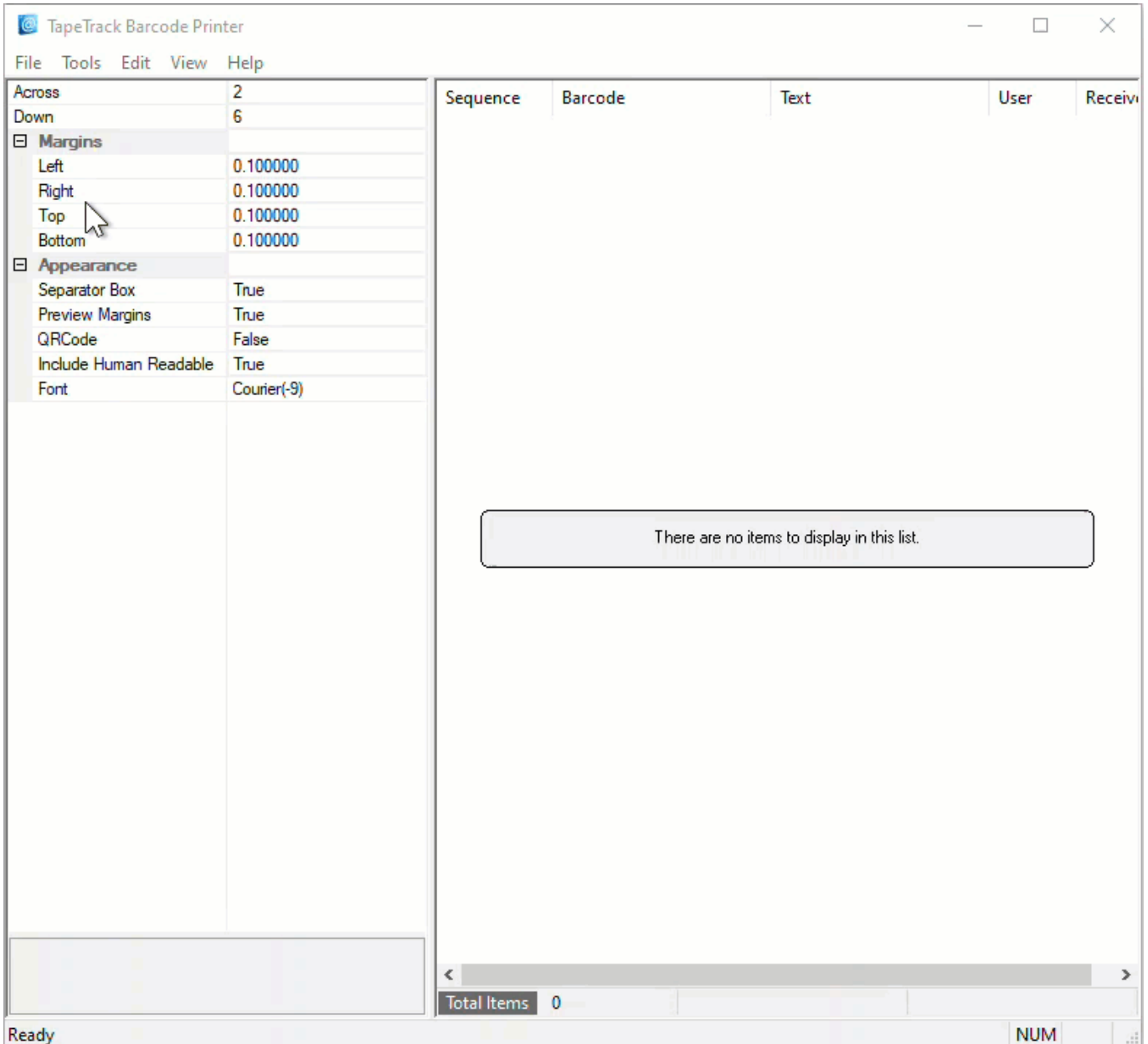


Alternatively, navigate in File Explorer to the TapeTrack TapeMaster installation directory and run the executable `TMSSBarcodePrinter.exe`.

## Loading Barcodes From Text File

From the Main Menu select `File` → `Open`

Navigate to and select the Barcode Text File. Click `Open` to load the file.



==== Editing Print Layout ==== Use the left window pane on the Barcode Printer to edit the print layout options to suit your requirements. \* Across: Number of barcodes to print across the page. \* Down: The number of barcodes to print down the page. \* Margins: Margins to be placed around the barcodes \* Left: Left margin padding \* Right: Right margin padding \* Top: Top margin padding \* Bottom: Bottom margin padding \* Appearance: \* Separator Box: Adds a grey border around each Barcode to aid in separating individual Barcodes. \* Preview Margins: Adds a preview of print boundaries to aid in confirming Barcode will print within a specified area. \* QR Code: Adds a QR code to the Barcode label. \* Include Human Readable: Adds text representation of Barcode to make it readable by Humans. \* Font: Sets font for Human Readable content, does not alter Barcode.

From:

<https://rtfm.tapetrack.com/> - **TapeTrack Documentation**

Permanent link:

[https://rtfm.tapetrack.com/print\\_barcodes/unqualified?rev=1617337969](https://rtfm.tapetrack.com/print_barcodes/unqualified?rev=1617337969)

Last update: **2025/01/21 22:07**

