

Printing Unqualified Barcode Labels

Printing Unqualified Barcodes with TapeTrack Barcode Printer is accomplished by either loading the Barcodes via a text file or copy/pasting the Barcodes.

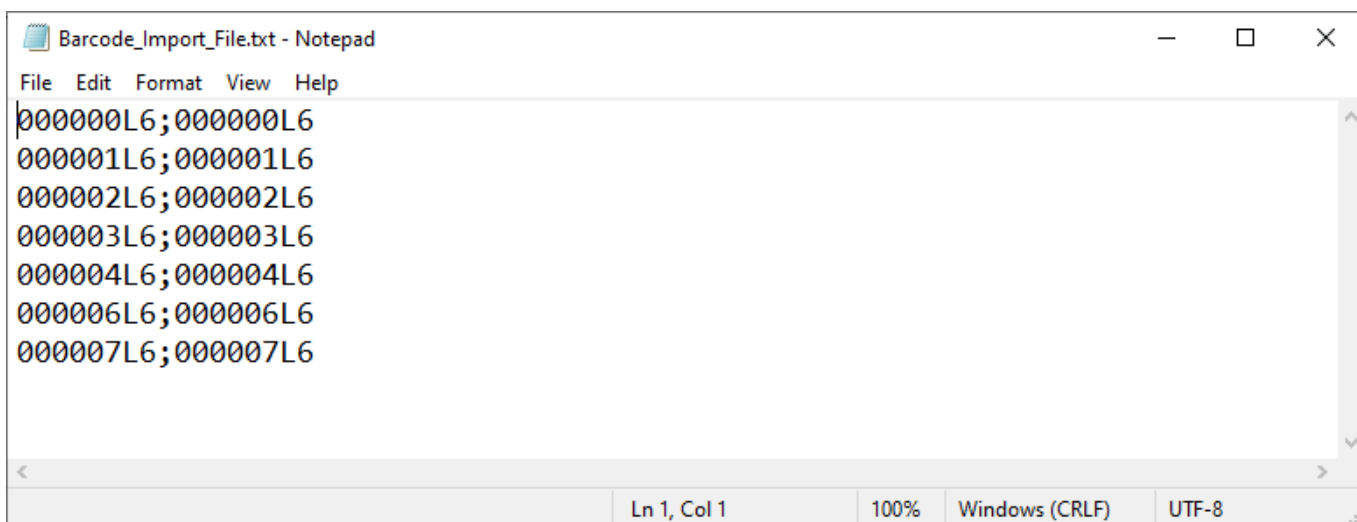
Loading Barcodes With A Text File

Creating The Barcode Text File

Information in the text file has the format of barcode;Human_readable_barcode, one barcode per line.

The Barcode Text File can be created several different ways, which method is best used depends on the quantity of Barcode labels required.

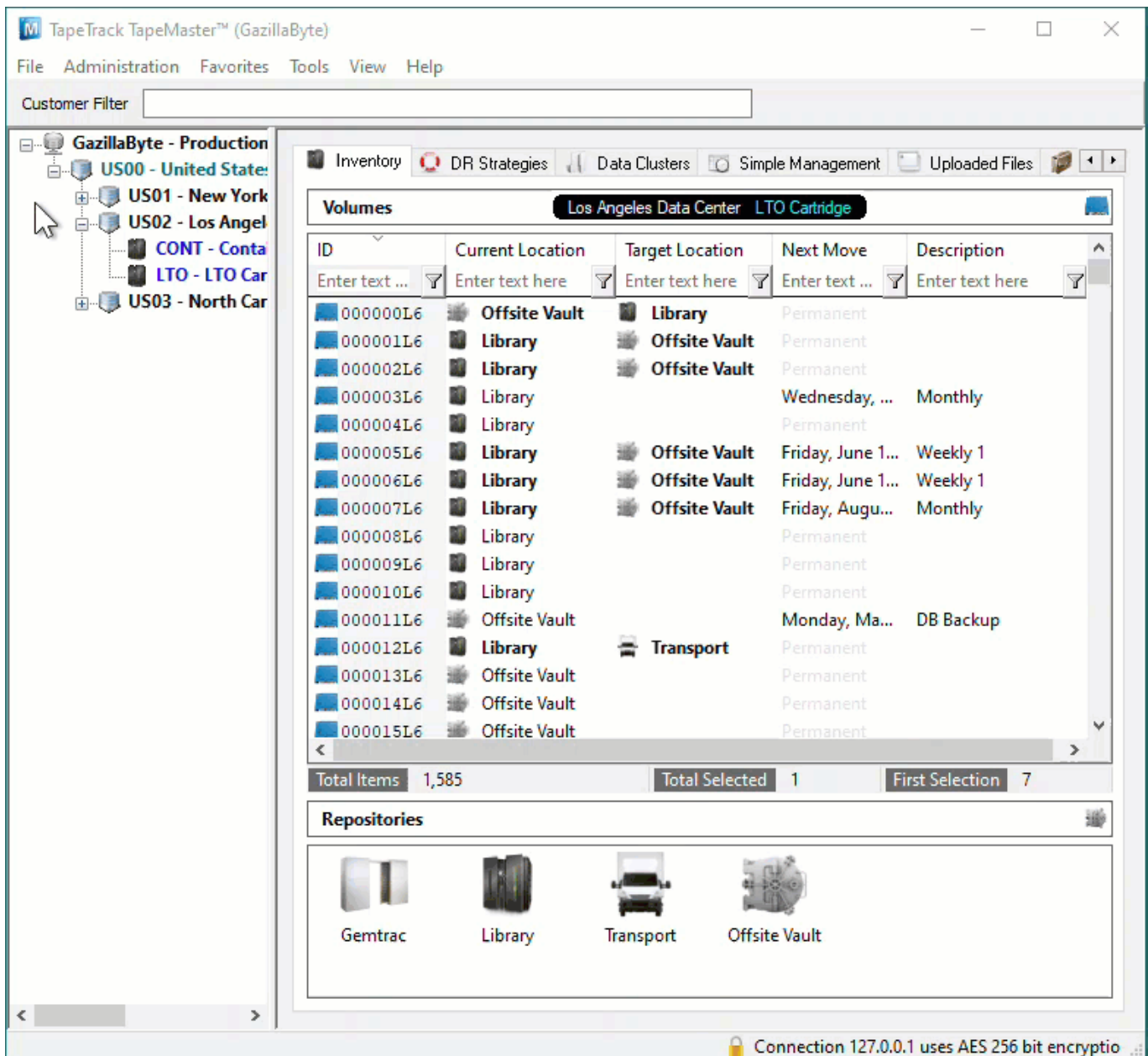
If only a couple of labels are required, the easiest method is to use a text editor like Notepad to manually type the labels required.



```
Barcode_Import_File.txt - Notepad
File Edit Format View Help
000000L6;000000L6
000001L6;000001L6
000002L6;000002L6
000003L6;000003L6
000004L6;000004L6
000006L6;000006L6
000007L6;000007L6
Ln 1, Col 1 100% Windows (CRLF) UTF-8
```

If a large number of Barcode Labels using Excel to create the required values for the text file.

- Selecting the Volumes in TapeMaster and copying values to your clipboard by right clicking the highlighted Volumes and selecting Edit → Copy → Unqualified Volumes.
- Open Excel and paste Volume-ID's into an Excel spreadsheet column A
- Add ; to column B and drag cell to auto fill the cells next to column A values
- Use cell formulas to concatenate the cell values to one column using formula =CONCAT(A1,B1,A1) to create the barcode;barcode format.
- Copy the concatenated column and paste into a Notepad file, saving under a known name and location.



Opening The Barcode Printer

Open the Barcode Printer via the Windows Start Menu at TapeTrack → Barcode Printer



Alternatively, navigate in File Explorer to the TapeTrack TapeMaster installation directory and run the executable `TMSSBarcodePrinter.exe`.

Loading Barcodes From Text File

From the Main Menu select **File** → **Open**

Navigate to and select the Barcode Text File. Click **Open** to load the file.



Loading Barcodes Using Cut/Paste

Printing Barcodes

Editing Print Layout

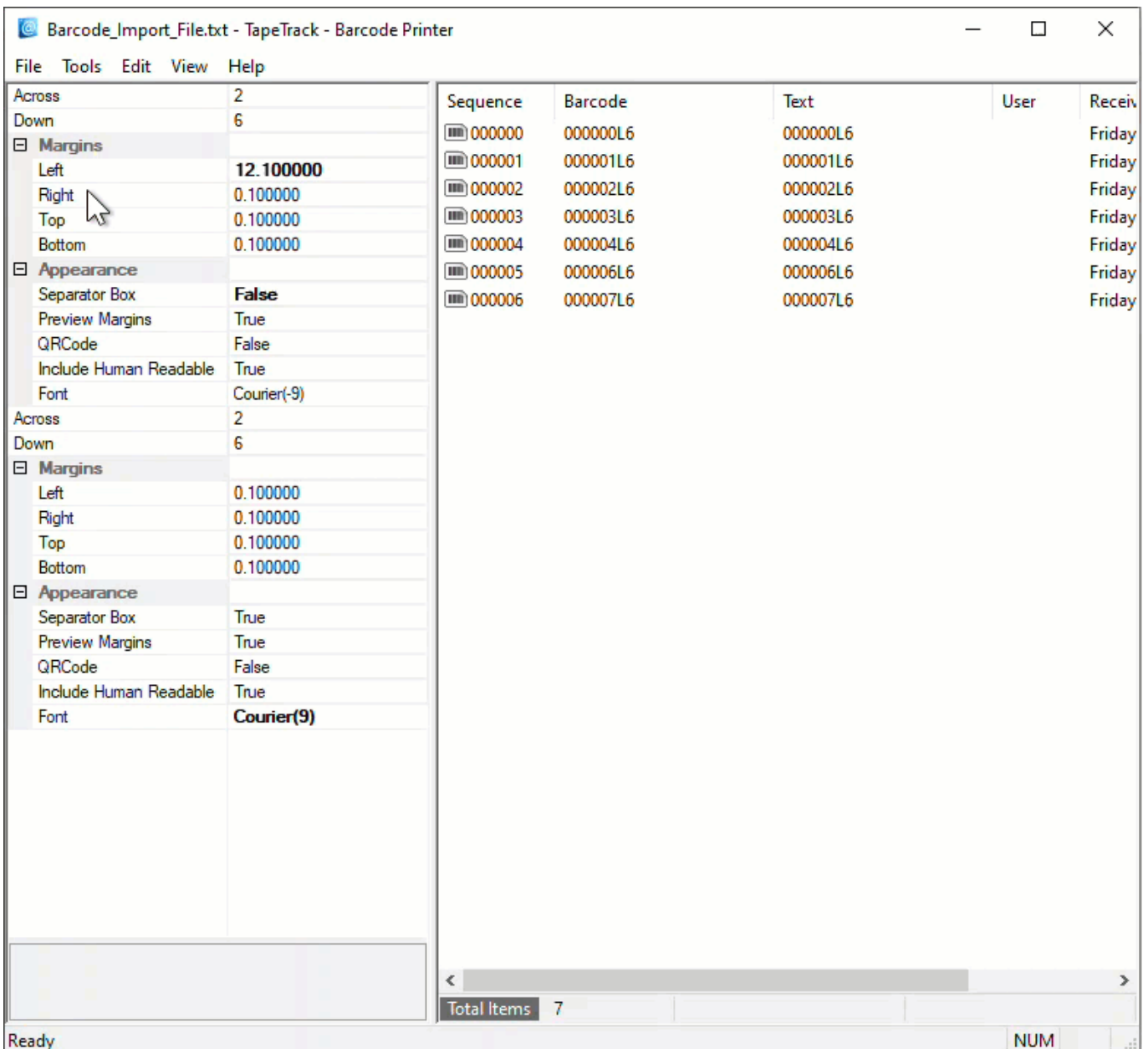
Use the left window pane on the Barcode Printer to edit the print layout options to suit your requirements.

- Across: Number of barcodes to print across the page.
- Down: The number of barcodes to print down the page.
- Margins: Margins to be placed around the barcodes
 - Left: Left margin padding
 - Right: Right margin padding

- Top: Top margin padding
- Bottom: Bottom margin padding
- Appearance:
 - Separator Box: Adds a grey border around each Barcode to aid in separating individual Barcodes when manually cutting them out.
 - Preview Margins: Adds a preview of print boundaries to aid in confirming Barcode will print within a specified area.
 - QR Code: Adds a QR code to the Barcode label.
 - Include Human Readable: Adds text representation of Barcode to make it readable by Humans.
 - Font: Sets font for Human Readable content, does not alter Barcode.

Preview Print Layout

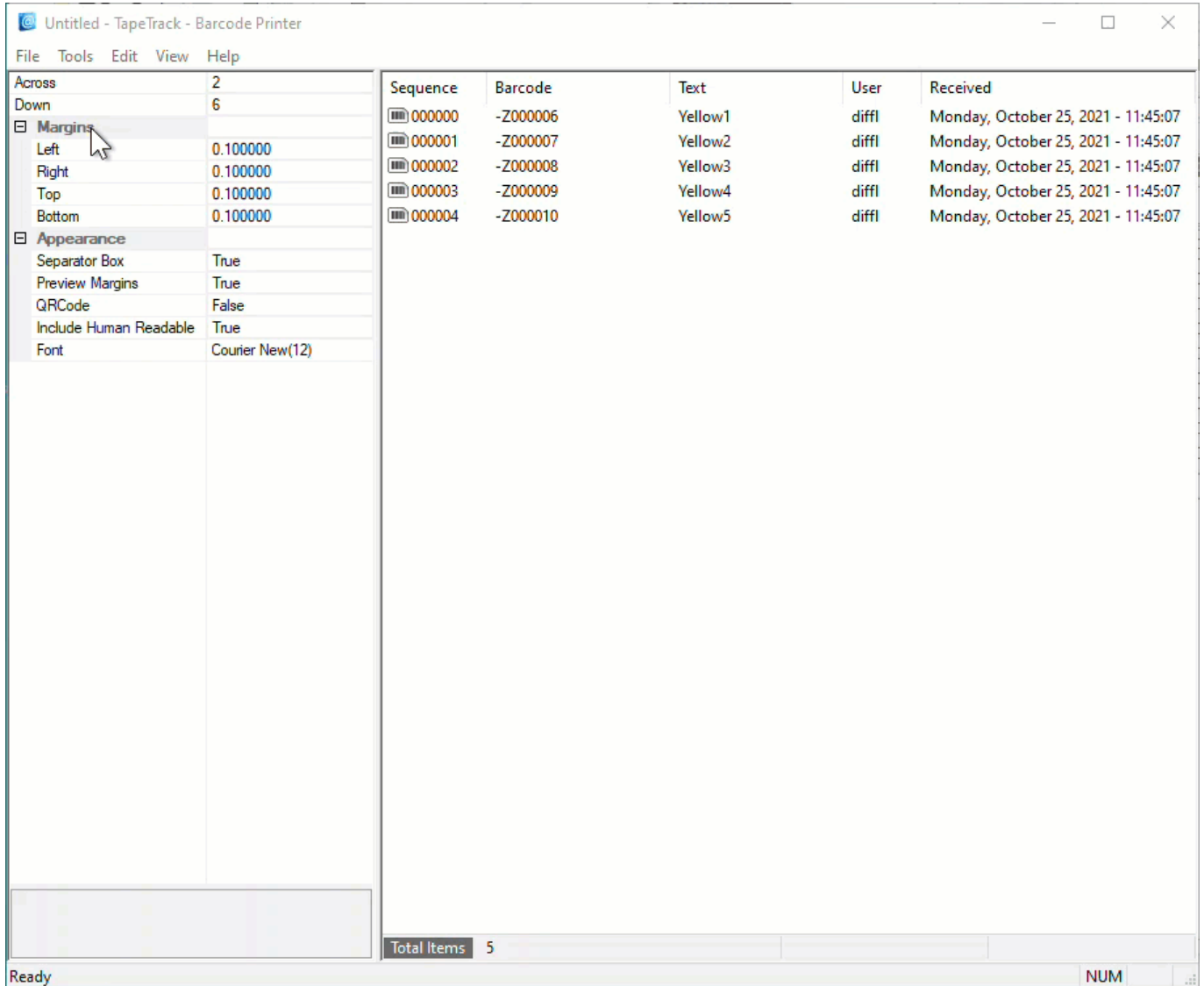
From the Main Menu, select File → Print Preview



From the preview screen, you can click Zoom to enlarge the barcodes, Print if your happy with the layout, or Close to return back to the Barcode Printer to make further adjustments.

Print Labels

To print the labels, from the Main Menu select File → Print to open the Print dialog, select your desired printer and click OK.



Closing The Barcode Printer

To close the Barcode Printer, from the Main Menu select File → Exit or click the X at the top right of the window.

Barcode_Import_File.txt - TapeTrack - Barcode Printer

File Tools Edit View Help

Across	2
Down	6
Margins	
Left	12.100000
Right	0.100000
Top	0.100000
Bottom	0.100000
Appearance	
Separator Box	False
Preview Margins	True
QRCode	False
Include Human Readable	True
Font	Courier(-9)
Across	2
Down	6
Margins	
Left	0.100000
Right	0.100000
Top	0.100000
Bottom	0.100000
Appearance	
Separator Box	True
Preview Margins	True
QRCode	False
Include Human Readable	True
Font	Courier(9)

Sequence	Barcode	Text	User	Receiv
000000	000000L6	000000L6		Friday
000001	000001L6	000001L6		Friday
000002	000002L6	000002L6		Friday
000003	000003L6	000003L6		Friday
000004	000004L6	000004L6		Friday
000005	000006L6	000006L6		Friday
000006	000007L6	000007L6		Friday

Total Items 7

Ready NUM

[barcode](#), [print](#), [tapemaster](#), [update doco](#), [technote](#)

From: <https://rtfm.tapetrack.com/> - **TapeTrack Documentation**

Permanent link: https://rtfm.tapetrack.com/print_barcodes/unqualified?rev=1617667412

Last update: **2025/01/21 22:07**

