

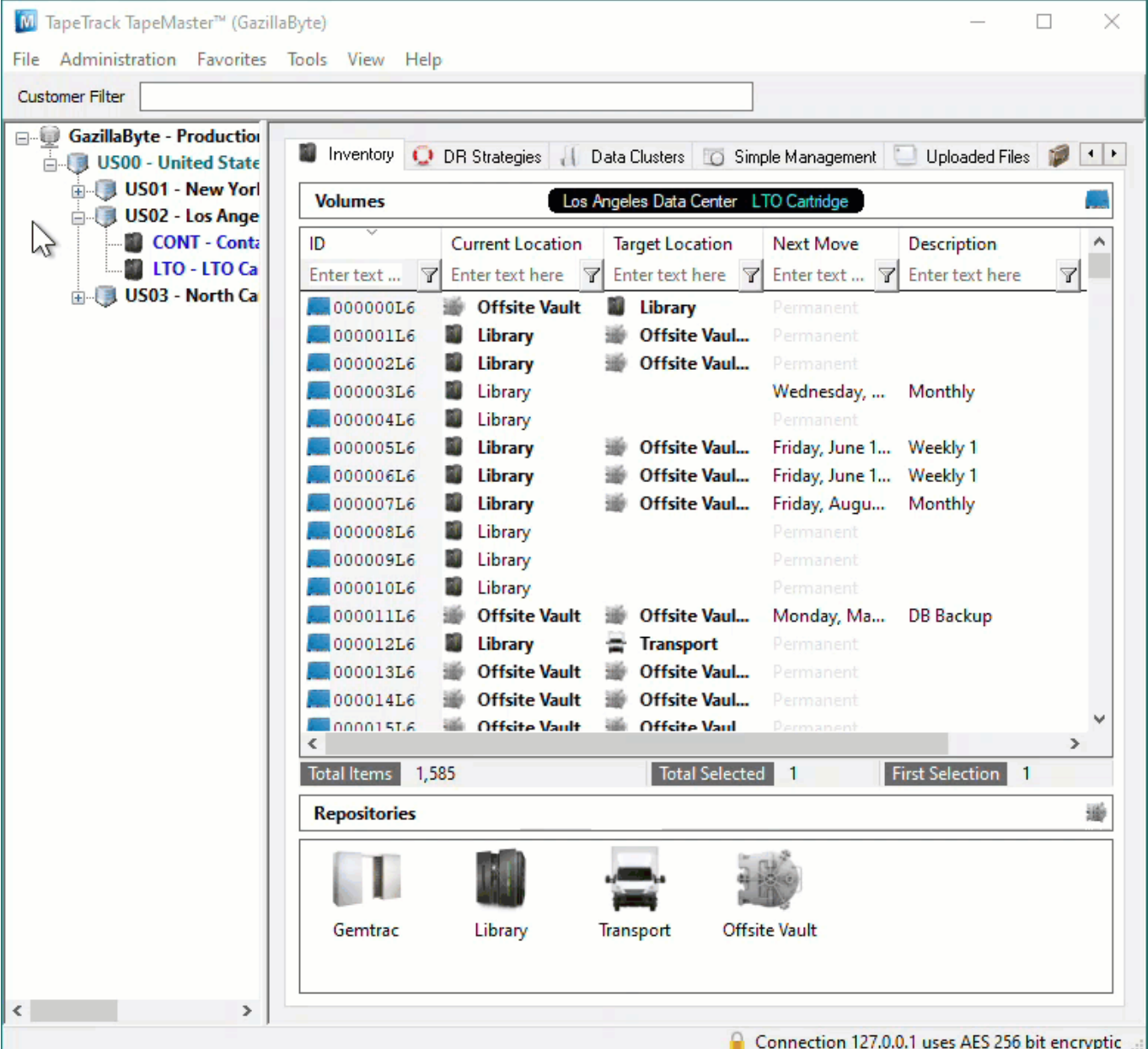
# Printing Unqualified Barcode Labels

Printing Unqualified Barcodes with TapeTrack Barcode Printer is accomplished by either copy/pasting the Barcodes or loading the Barcodes via a text file.

## Loading Barcodes Via Copy/Paste

### Copy The Barcodes To The Clipboard

Load the required Barcodes to your Windows Clipboard, this can be accomplished simply copying the Barcode values from a text file, email or, if the Volumes are already present in TapeTrack, copied directly via TapeMaster.



The screenshot displays the TapeTrack TapeMaster™ (GazillaByte) application window. The interface includes a menu bar (File, Administration, Favorites, Tools, View, Help), a Customer Filter, and a tree view on the left showing the production structure (GazillaByte - Production, US00 - United State, US01 - New York, US02 - Los Angeles, CONT - Cont..., LTO - LTO Ca, US03 - North Carolina). The main area shows a table of Volumes for the Los Angeles Data Center LTO Cartridge. The table has columns for ID, Current Location, Target Location, Next Move, and Description. Below the table, there are summary statistics: Total Items: 1,585, Total Selected: 1, and First Selection: 1. At the bottom, there is a Repositories section with icons for Gemtrac, Library, Transport, and Offsite Vault. A connection status bar at the very bottom indicates 'Connection 127.0.0.1 uses AES 256 bit encryption'.

ID	Current Location	Target Location	Next Move	Description
000000L6	Offsite Vault	Library	Permanent	
000001L6	Library	Offsite Vault	Permanent	
000002L6	Library	Offsite Vault	Permanent	
000003L6	Library		Wednesday, ...	Monthly
000004L6	Library		Permanent	
000005L6	Library	Offsite Vault	Friday, June 1...	Weekly 1
000006L6	Library	Offsite Vault	Friday, June 1...	Weekly 1
000007L6	Library	Offsite Vault	Friday, Augu...	Monthly
000008L6	Library		Permanent	
000009L6	Library		Permanent	
000010L6	Library		Permanent	
000011L6	Offsite Vault	Offsite Vault	Monday, Ma...	DB Backup
000012L6	Library	Transport	Permanent	
000013L6	Offsite Vault	Offsite Vault	Permanent	
000014L6	Offsite Vault	Offsite Vault	Permanent	
000015L6	Offsite Vault	Offsite Vault	Permanent	

## Opening The Barcode Printer

Open the Barcode Printer via the Windows Start Menu at TapeTrack → Barcode Printer



Alternatively, navigate in File Explorer to the TapeTrack TapeMaster installation directory and run the executable `TMSSBarcodePrinter.exe`.

## Pasting The Barcodes In The Barcode Printer

In the right window of the Barcode Printer, right click and select `Edit → Paste` to add the Barcodes.



## [[#printing-the-barcodes|Printing The Barcodes]]

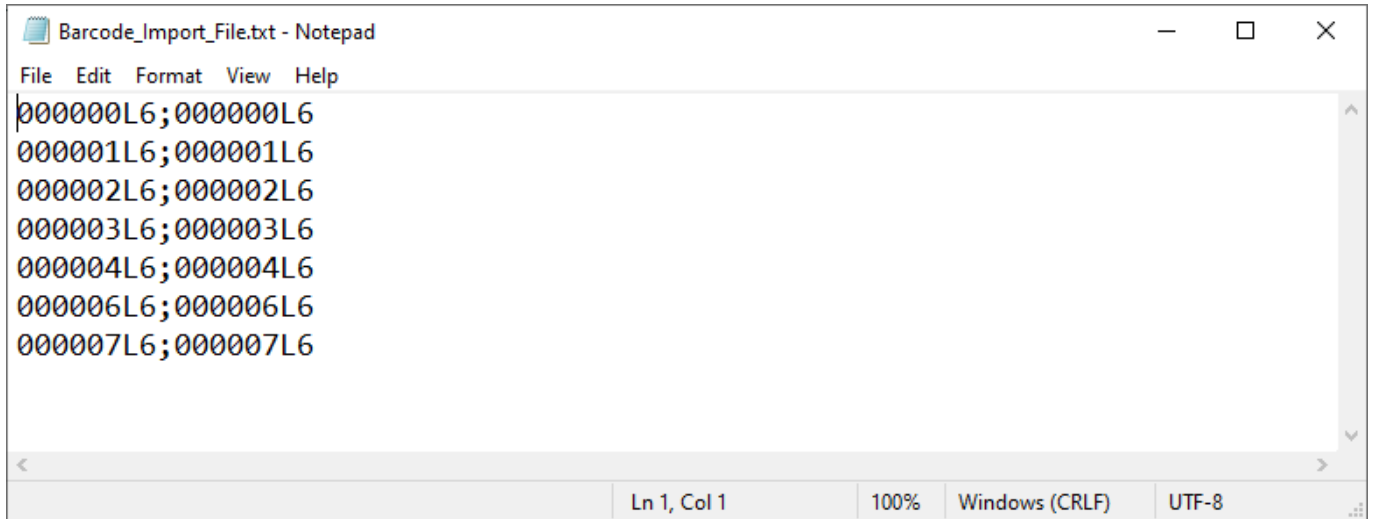
# Loading Barcodes With A Text File

## Creating The Barcode Text File

Information in the text file has the format of barcode;Human\_readable\_barcode, one barcode per line.

The Barcode Text File can be created several different ways, which method is best used depends on the quantity of Barcode labels required.

If only a couple of labels are required, the easiest method is to use a text editor like Notepad to manually type the labels required.



If a large number of Barcode Labels using Excel to create the required values for the text file.

- Selecting the Volumes in TapeMaster and copying values to your clipboard by right clicking the highlighted Volumes and selecting Edit → Copy → Unqualified Volumes.
- Open Excel and paste Volume-ID's into an Excel spreadsheet column A
- Add ; to column B and drag cell to auto fill the cells next to column A values
- Use cell formulas to concatenate the cell values to one column using formula =CONCAT(A1,B1,A1) to create the barcode;barcode format.
- Copy the concatenated column and paste into a Notepad file, saving under a known name and location.



## Opening The Barcode Printer

Open the Barcode Printer via the Windows Start Menu at TapeTrack → Barcode Printer

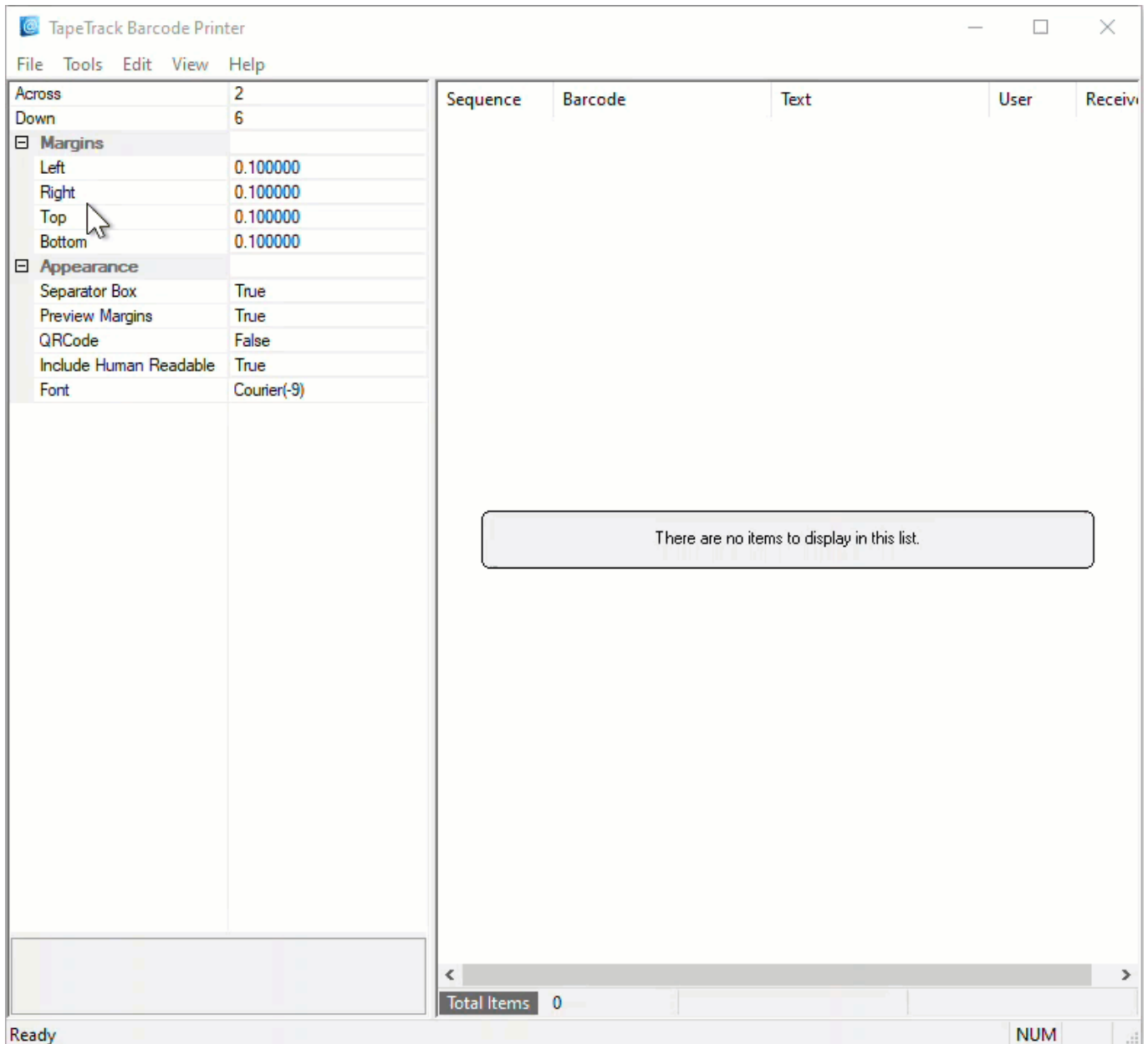


Alternatively, navigate in File Explorer to the TapeTrack TapeMaster installation directory and run the executable `TMSSBarcodePrinter.exe`.

### Loading Barcodes From Text File

From the Main Menu select `File → Open`

Navigate to and select the Barcode Text File. Click `Open` to load the file.



## Printing The Barcodes

### Editing Print Layout

Use the left window pane on the Barcode Printer to edit the print layout options to suit your requirements.

- **Across:** Number of barcodes to print across the page.
- **Down:** The number of barcodes to print down the page.
- **Margins:** Margins to be placed around the barcodes
  - **Left:** Left margin padding
  - **Right:** Right margin padding
  - **Top:** Top margin padding
  - **Bottom:** Bottom margin padding
- **Appearance:**
  - **Separator Box:** Adds a grey border around each Barcode to aid in separating individual

Barcodes when manually cutting them out.

- Preview Margins: Adds a preview of print boundaries to aid in confirming Barcode will print within a specified area.
- QR Code: Adds a QR code to the Barcode label.
- Include Human Readable: Adds text representation of Barcode to make it readable by Humans.
- Font: Sets font for Human Readable content, does not alter Barcode.

## Preview Print Layout

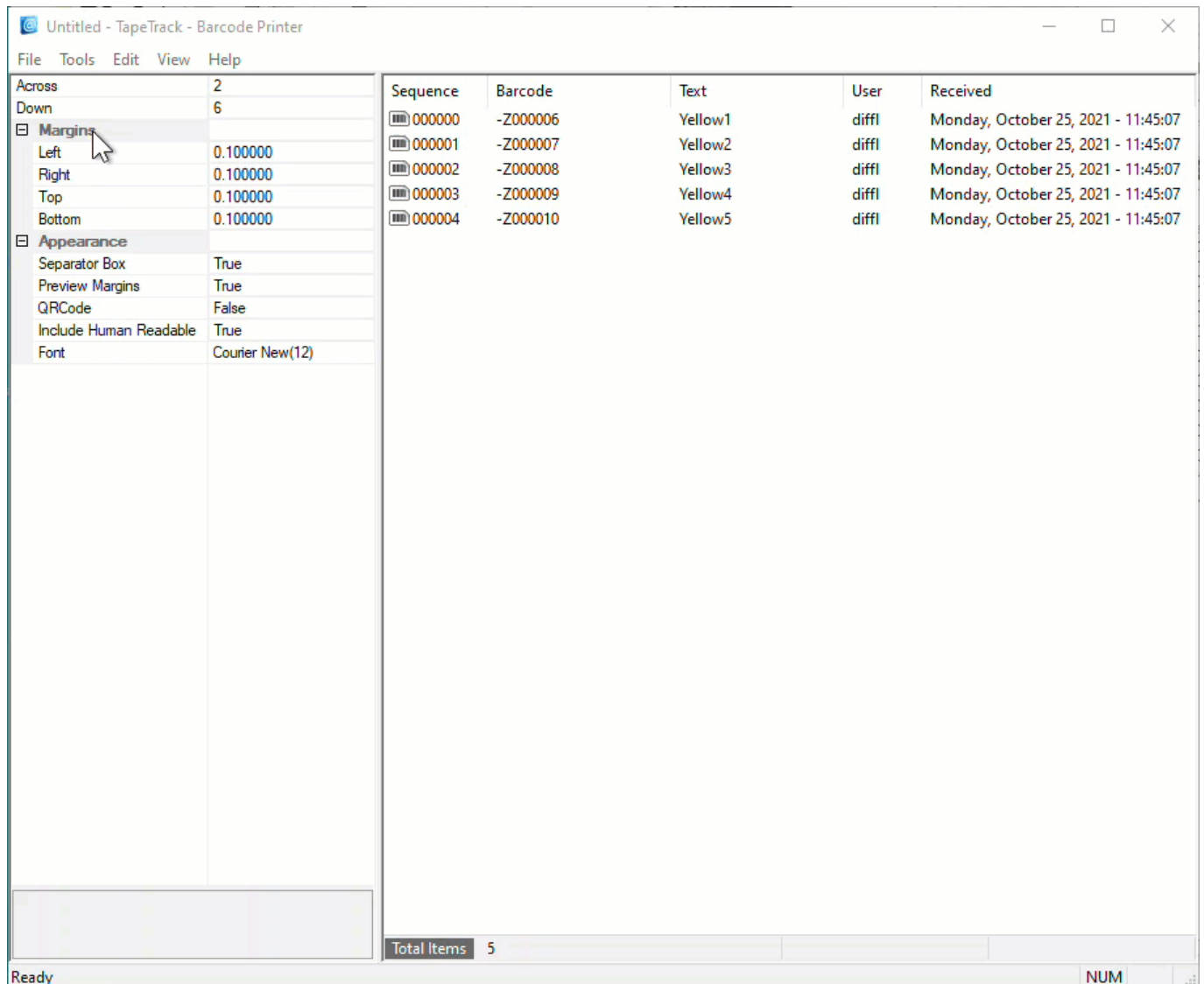
From the Main Menu, select File → Print Preview



From the preview screen, you can click Zoom to enlarge the barcodes, Print if your happy with the layout, or Close to return back to the Barcode Printer to make further adjustments.

## Print Labels

To print the labels, from the Main Menu select File → Print to open the Print dialog, select your desired printer and click OK.



## Closing The Barcode Printer

To close the Barcode Printer, from the Main Menu select File → Exit or click the X at the top right of the window.

Barcode\_Import\_File.txt - TapeTrack - Barcode Printer

File Tools Edit View Help

Across	2
Down	6
<b>Margins</b>	
Left	12.100000
Right	0.100000
Top	0.100000
Bottom	0.100000
<b>Appearance</b>	
Separator Box	False
Preview Margins	True
QRCode	False
Include Human Readable	True
Font	Couner(-9)
Across	2
Down	6
<b>Margins</b>	
Left	0.100000
Right	0.100000
Top	0.100000
Bottom	0.100000
<b>Appearance</b>	
Separator Box	True
Preview Margins	True
QRCode	False
Include Human Readable	True
Font	Courier(9)

Sequence	Barcode	Text	User	Receiv
000000	00000L6	00000L6		Friday
000001	000001L6	000001L6		Friday
000002	000002L6	000002L6		Friday
000003	000003L6	000003L6		Friday
000004	000004L6	000004L6		Friday
000005	000006L6	000006L6		Friday
000006	000007L6	000007L6		Friday

Total Items 7

Ready NUM

[barcode](#), [print](#), [tapemaster](#), [update doco](#), [technote](#)

From: <https://rtfm.tapetrack.com/> - **TapeTrack Documentation**

Permanent link: [https://rtfm.tapetrack.com/print\\_barcodes/unqualified?rev=1617671796](https://rtfm.tapetrack.com/print_barcodes/unqualified?rev=1617671796)

Last update: **2025/01/21 22:07**

