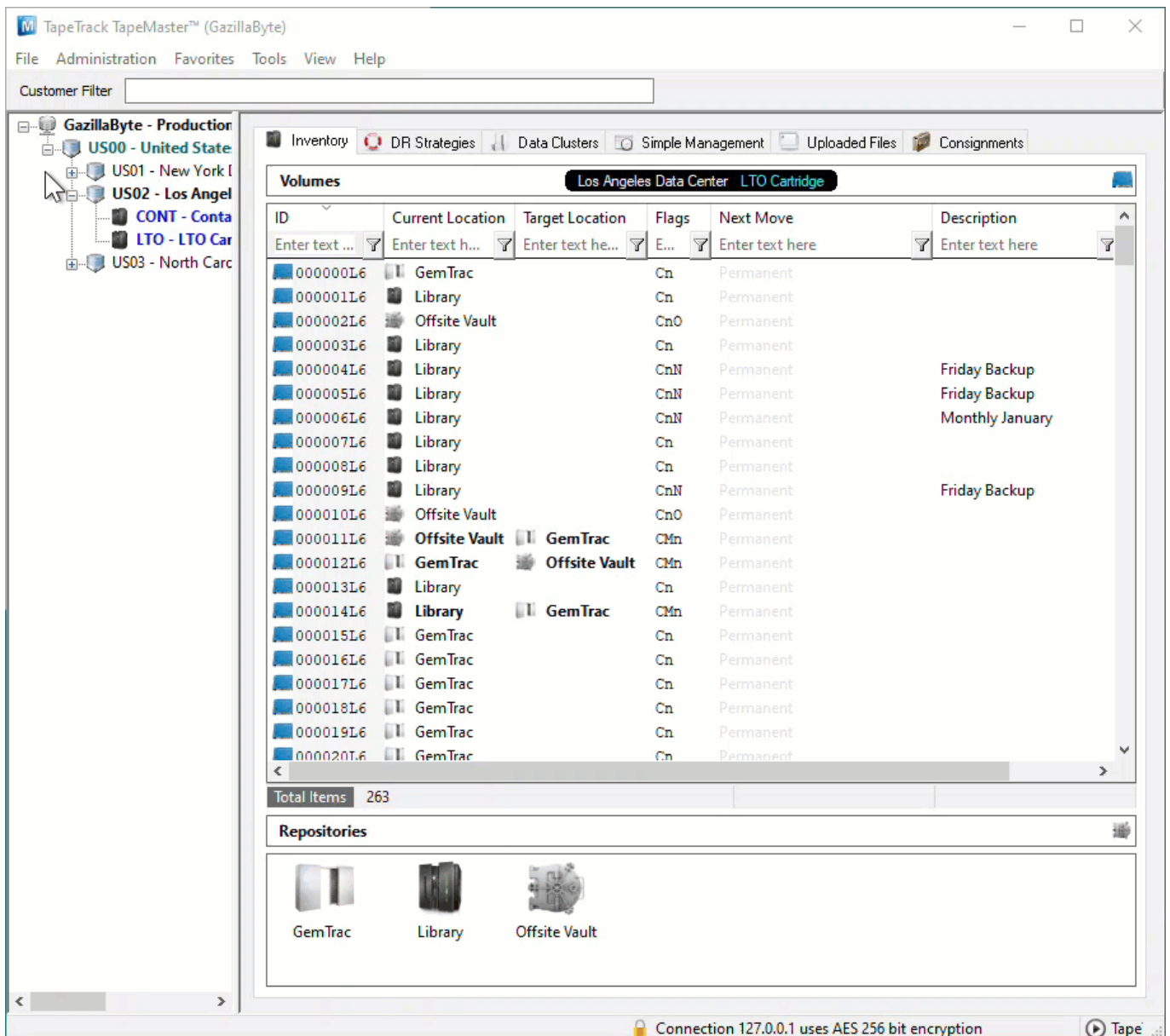


# Printing Zone Barcodes

Zone barcodes can be printed from TapeTrack TapeMaster using the TapeTrack Barcode Printer.

Identify what zone ID barcodes required to print by right-clicking the repositories, in the respective customer media types, and select Properties and then the Zones tab.

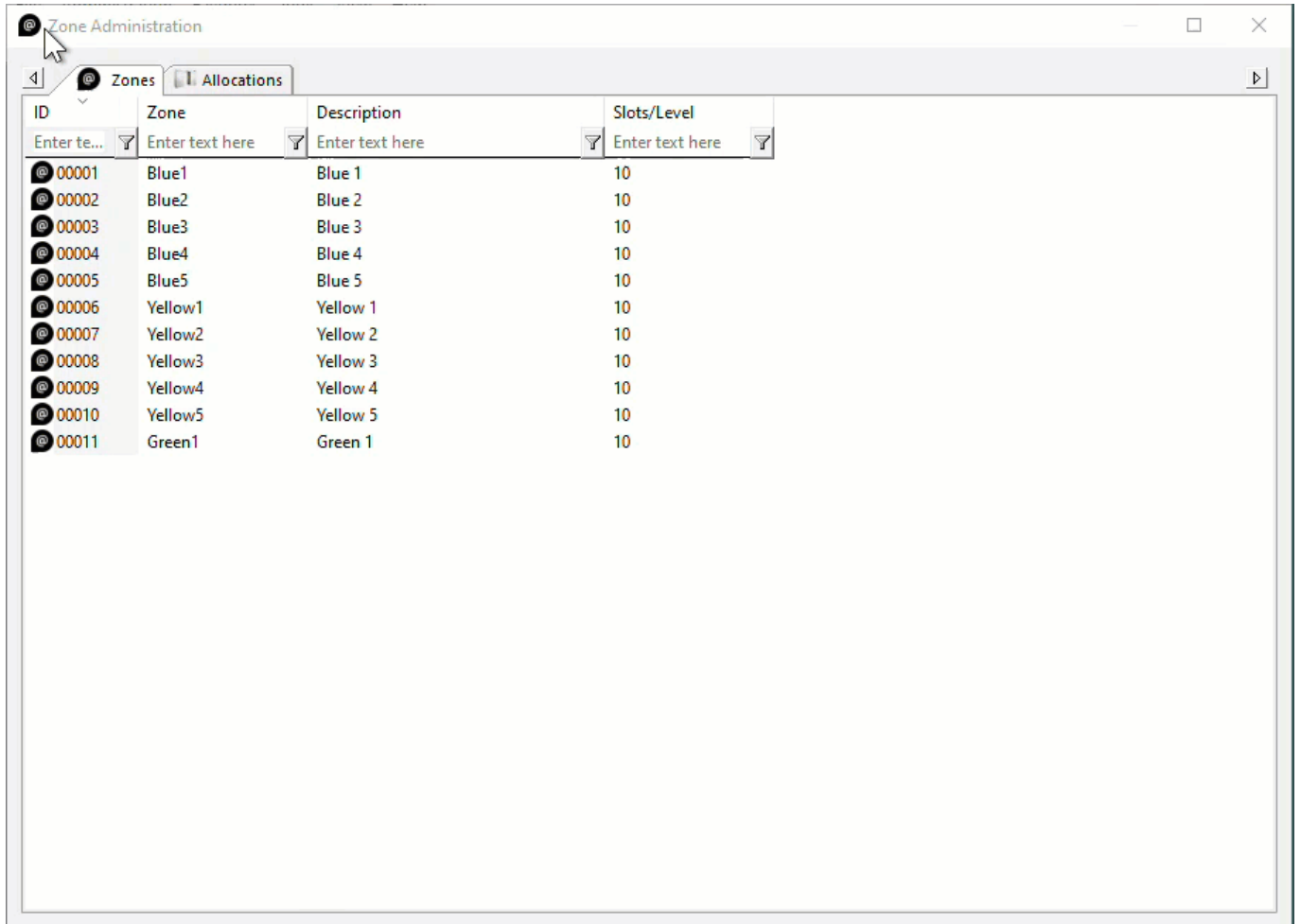
In the Zone Administration window under the heading **Zone** is the Zone-ID number and Zone description (in the format number:description). Record these details and close the window by the X at the top right or using the Cancel button.



From the main menu, select Administration→Zone Administration.

From the displayed zones, select the required zones (range select Shift+Click, Control+Click).

Right-click the highlighted zones and select Print→Labels to pass the barcodes through to the TapeTrack Barcode Printer.



The screenshot shows a web browser window titled "Zone Administration". It has two tabs: "Zones" (selected) and "Allocations". Below the tabs is a table with the following columns: ID, Zone, Description, and Slots/Level. Each column has a search filter box. The table contains 11 rows of data:

ID	Zone	Description	Slots/Level
@00001	Blue1	Blue 1	10
@00002	Blue2	Blue 2	10
@00003	Blue3	Blue 3	10
@00004	Blue4	Blue 4	10
@00005	Blue5	Blue 5	10
@00006	Yellow1	Yellow 1	10
@00007	Yellow2	Yellow 2	10
@00008	Yellow3	Yellow 3	10
@00009	Yellow4	Yellow 4	10
@00010	Yellow5	Yellow 5	10
@00011	Green1	Green 1	10

In the left window of the Barcode Printer set your preferred specifications on barcode layout. If unsure of the layout or sizing of the barcodes, selecting File→Print Preview will allow you to see the output before committing to printing. Once satisfied with the settings, barcodes can be printed by selecting File→Print.

## Closing The Barcode Printer

To close the Barcode Printer, from the Main Menu select File → Exit or click the X at the top right of the window.

Barcode\_Import\_File.txt - TapeTrack - Barcode Printer

File Tools Edit View Help

Across	2
Down	6
<b>Margins</b>	
Left	<b>12.100000</b>
Right	0.100000
Top	0.100000
Bottom	0.100000
<b>Appearance</b>	
Separator Box	<b>False</b>
Preview Margins	True
QRCode	False
Include Human Readable	True
Font	Couner(-9)
Across	2
Down	6
<b>Margins</b>	
Left	0.100000
Right	0.100000
Top	0.100000
Bottom	0.100000
<b>Appearance</b>	
Separator Box	True
Preview Margins	True
QRCode	False
Include Human Readable	True
Font	<b>Courier(9)</b>

Sequence	Barcode	Text	User	Receiv
000000	00000L6	00000L6		Friday
000001	00001L6	00001L6		Friday
000002	00002L6	00002L6		Friday
000003	00003L6	00003L6		Friday
000004	00004L6	00004L6		Friday
000005	00006L6	00006L6		Friday
000006	00007L6	00007L6		Friday

Total Items 7

Ready NUM

barcode, print, tapemaster, update doco

From: <https://rtfm.tapetrack.com/> - **TapeTrack Documentation**

Permanent link: [https://rtfm.tapetrack.com/print\\_barcodes/zones?rev=1617601798](https://rtfm.tapetrack.com/print_barcodes/zones?rev=1617601798)

Last update: **2025/01/21 22:07**

