

Printing Zone Barcodes

Zone barcodes can be printed from TapeTrack TapeMaster using the TapeTrack Barcode Printer.

Identify what zone ID barcodes required to print by right-clicking the [Repositoriess](#), in the respective [Customer Media Types](#), and select Properties and then the Zones tab.

In the Zone Administration window under the heading **Zone** is the Zone-ID number and Zone description (in the format number:description). Record these details and close the window by the X at the top right or using the Cancel button.

The screenshot displays the TapeTrack TapeMaster software interface. The main window shows a list of volumes under the heading "Los Angeles Data Center LTO Cartridge". The table below represents the data shown in the interface:

ID	Current Location	Target Location	Flags	Next Move	Description
000000L6	GemTrac		Cn	Permanent	
000001L6	Library		Cn	Permanent	
000002L6	Offsite Vault		CnO	Permanent	
000003L6	Library		Cn	Permanent	
000004L6	Library		CnN	Permanent	Friday Backup
000005L6	Library		CnN	Permanent	Friday Backup
000006L6	Library		CnN	Permanent	Monthly January
000007L6	Library		Cn	Permanent	
000008L6	Library		Cn	Permanent	
000009L6	Library		CnN	Permanent	Friday Backup
000010L6	Offsite Vault		CnO	Permanent	
000011L6	Offsite Vault	GemTrac	CMn	Permanent	
000012L6	GemTrac	Offsite Vault	CMn	Permanent	
000013L6	Library		Cn	Permanent	
000014L6	Library	GemTrac	CMn	Permanent	
000015L6	GemTrac		Cn	Permanent	
000016L6	GemTrac		Cn	Permanent	
000017L6	GemTrac		Cn	Permanent	
000018L6	GemTrac		Cn	Permanent	
000019L6	GemTrac		Cn	Permanent	
000020L6	GemTrac		Cn	Permanent	

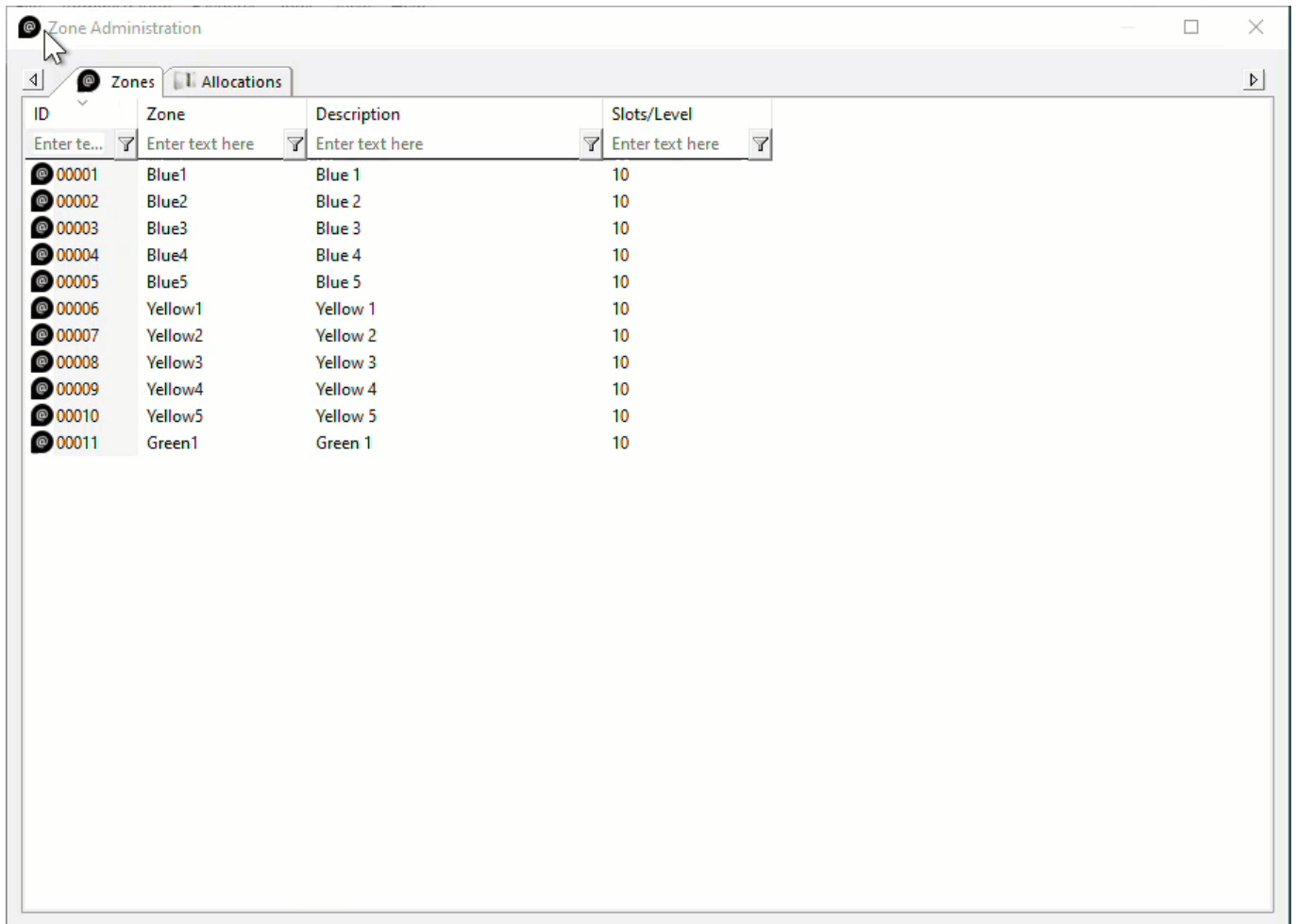
Below the table, the interface shows "Total Items 263" and a "Repositories" section with icons for GemTrac, Library, and Offsite Vault. The status bar at the bottom indicates "Connection 127.0.0.1 uses AES 256 bit encryption" and a "Tape" icon.

From the main menu, select Administration→Zone Administration.

From the displayed [Zones](#), select the required [Zones](#) (range select Shift+Click, Control+Click).

Right-click the highlighted [Zones](#) and select Print→Labels to pass the barcodes through to the TapeTrack Barcode Printer.

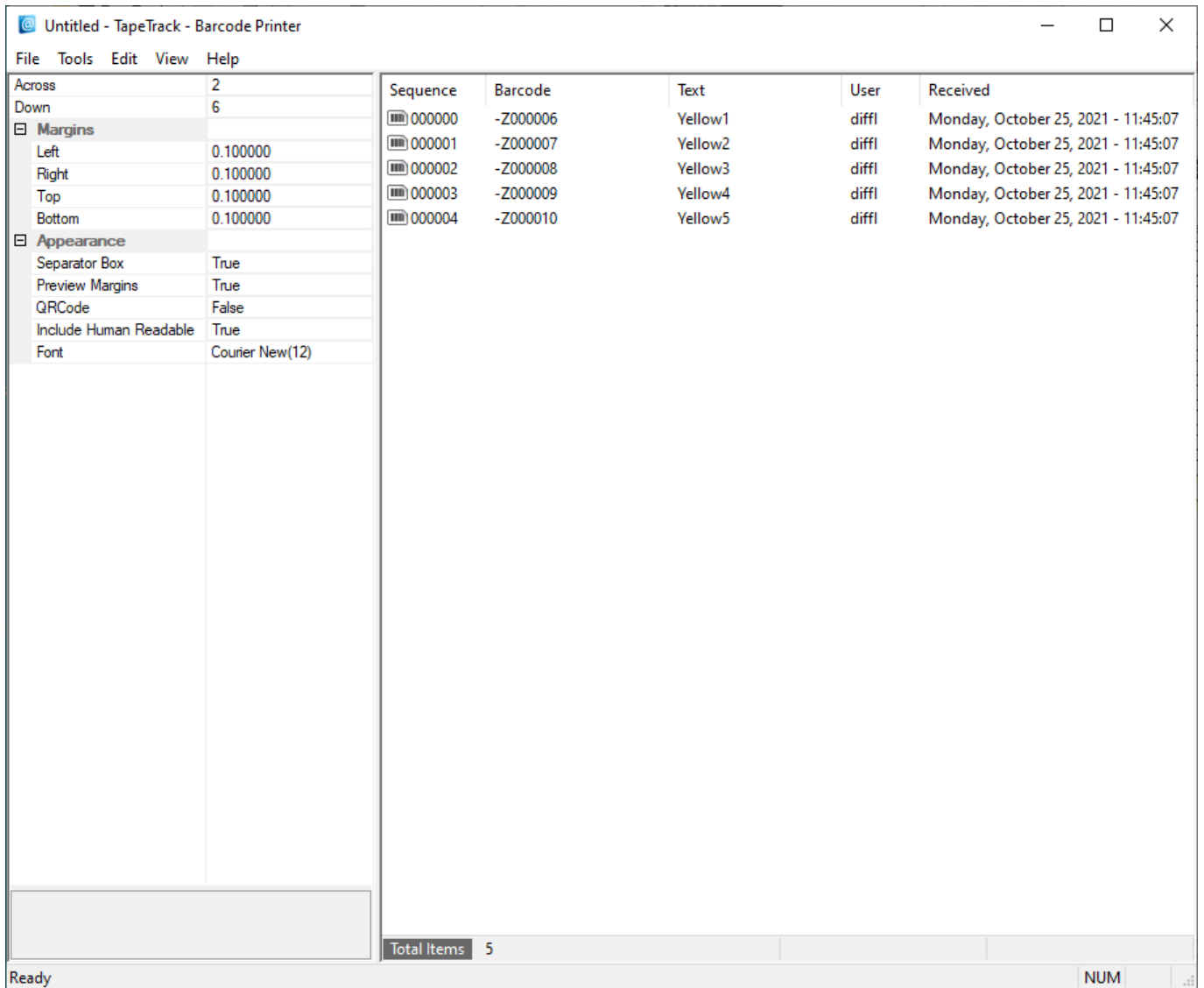
The Barcode Printer will open minimized in your toolbar, maximise to continue.



Editing Print Layout

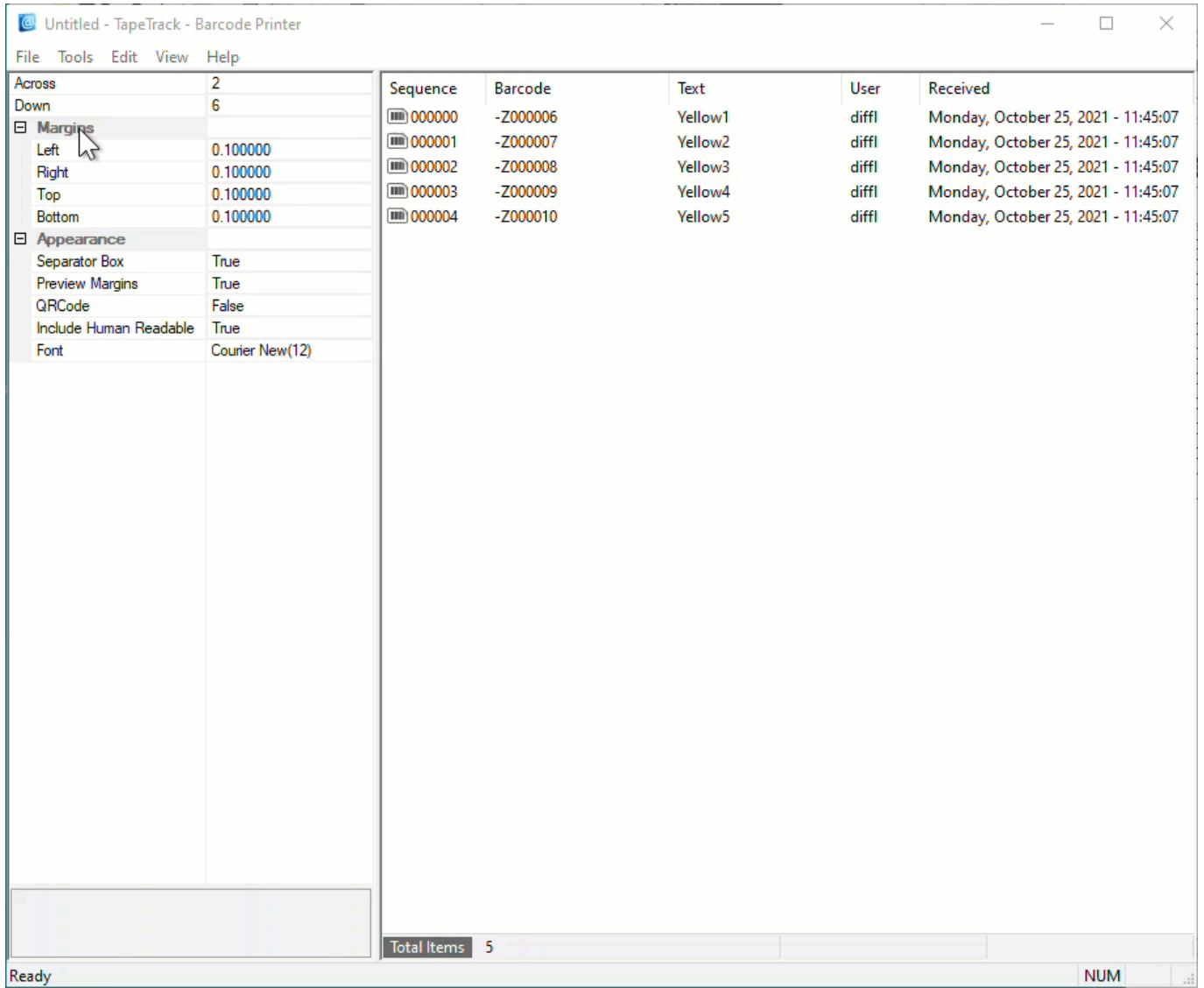
Use the left window pane on the Barcode Printer to edit the print layout options to suit your requirements.

- Across: Number of barcodes to print across the page.
- Down: The number of barcodes to print down the page.
- Margins: Margins to be placed around the barcodes
 - Left: Left margin padding
 - Right: Right margin padding
 - Top: Top margin padding
 - Bottom: Bottom margin padding
- Appearance:
 - Separator Box: Adds a grey border around each Barcode to aid in separating individual Barcodes when manually cutting them out.
 - Preview Margins: Adds a preview of print boundaries to aid in confirming Barcode will print within a specified area.
 - QR Code: Adds a QR code to the Barcode label.
 - Include Human Readable: Adds text representation of Barcode to make it readable by Humans.
 - Font: Sets font for Human Readable content, does not alter Barcode.



Preview Print Layout

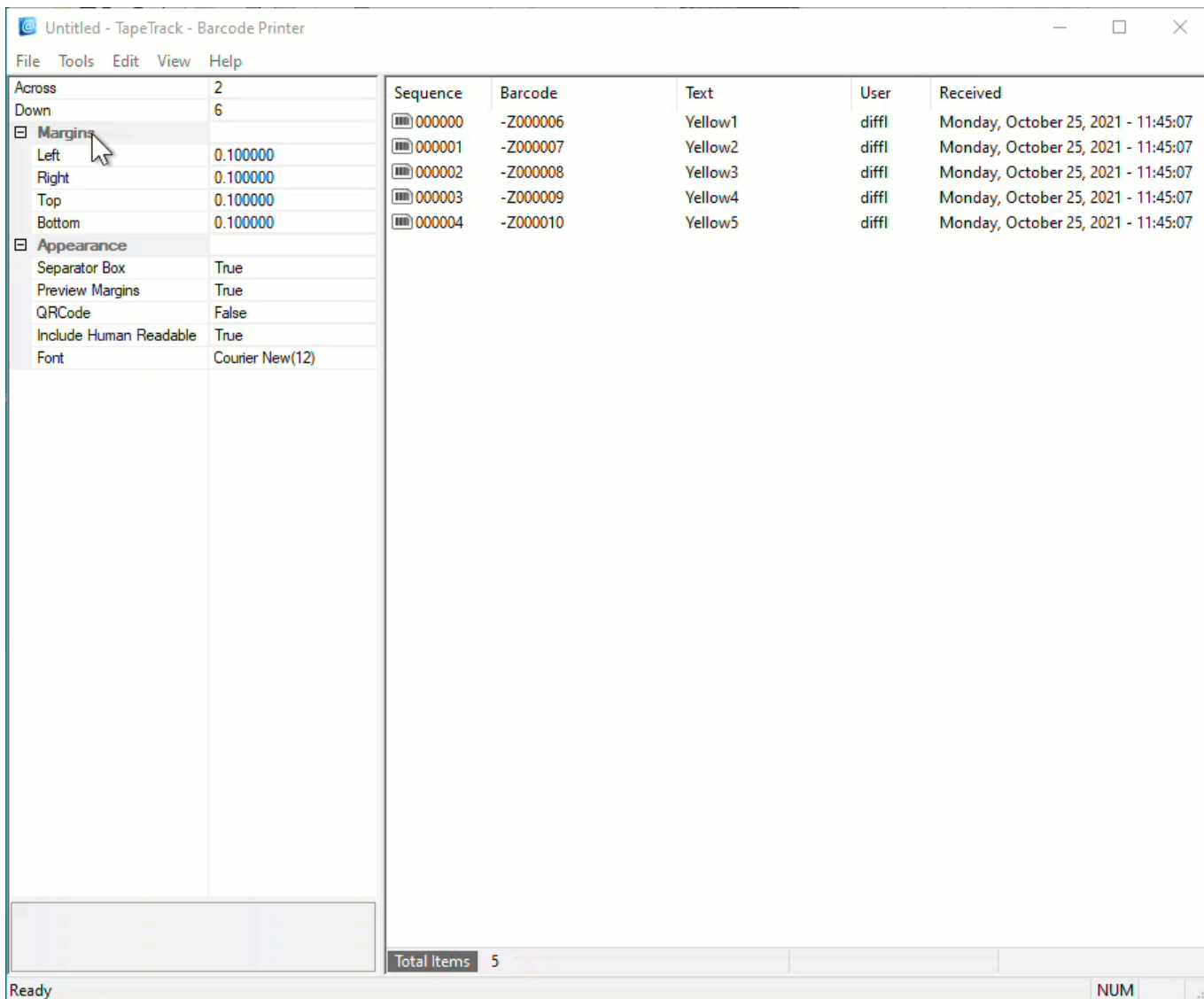
From the Main Menu, select File → Print Preview



From the preview screen, you can click Zoom to enlarge the barcodes, Print if your happy with the layout, or Close to return back to the Barcode Printer to make further adjustments.

Print Labels

To print the labels, from the Main Menu select File → Print to open the Print dialog, select your desired printer and click OK.



Closing The Barcode Printer

To close the Barcode Printer, from the Main Menu select File → Exit or click the X at the top right of the window.

Sequence	Barcode	Text	User	Received
000000	-Z000006	Yellow1	diff1	Monday, October 25, 2021 - 11:45:07
000001	-Z000007	Yellow2	diff1	Monday, October 25, 2021 - 11:45:07
000002	-Z000008	Yellow3	diff1	Monday, October 25, 2021 - 11:45:07
000003	-Z000009	Yellow4	diff1	Monday, October 25, 2021 - 11:45:07
000004	-Z000010	Yellow5	diff1	Monday, October 25, 2021 - 11:45:07

[barcode](#), [print](#), [tapemaster](#), [update doco](#)

From: <https://rtfm.tapetrack.com/> - **TapeTrack Documentation**

Permanent link: https://rtfm.tapetrack.com/print_barcodes/zones?rev=1617605026

Last update: **2025/01/21 22:07**

