

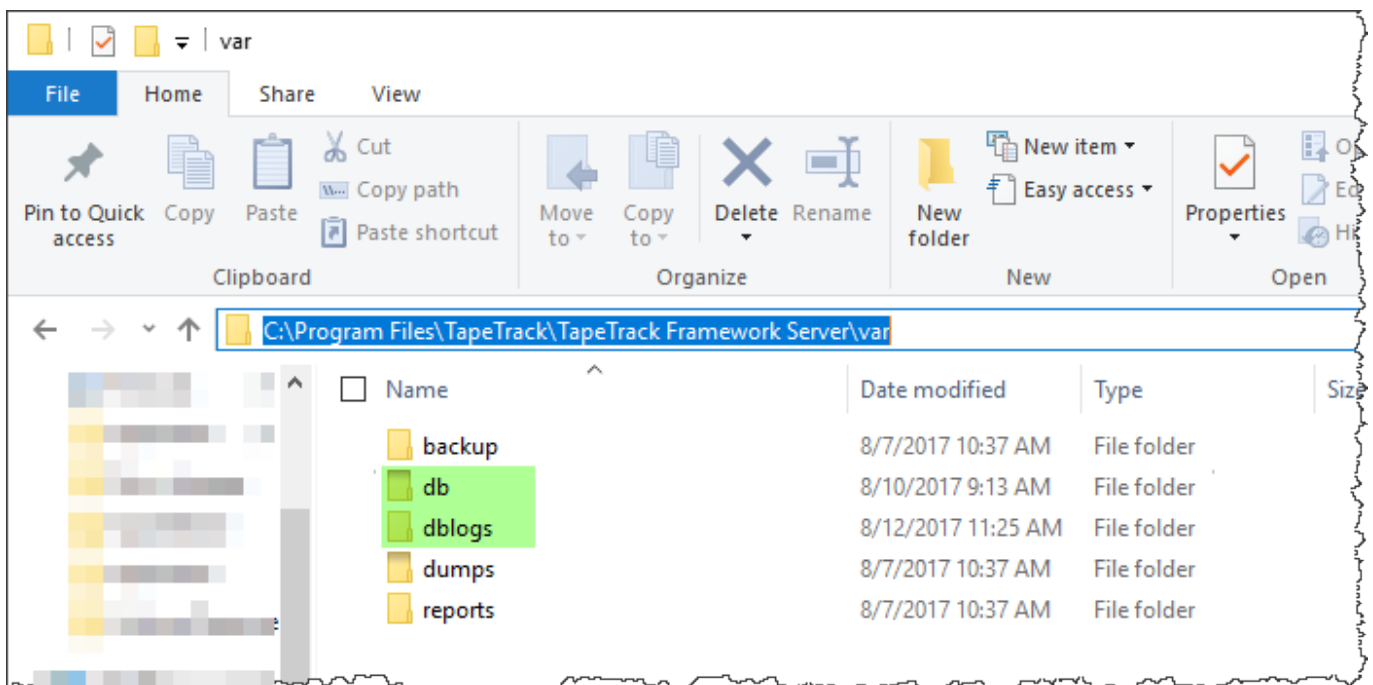
Backups

It is critical that you regularly backup your TapeTrack Framework Server to enable, should a failure occur, to restore not only the TapeTrack database but quickly identify which Volumes are required for data restoration and their current location.

Windows

To backup the TapeTrack database you should backup the following folders in the listed sequence:

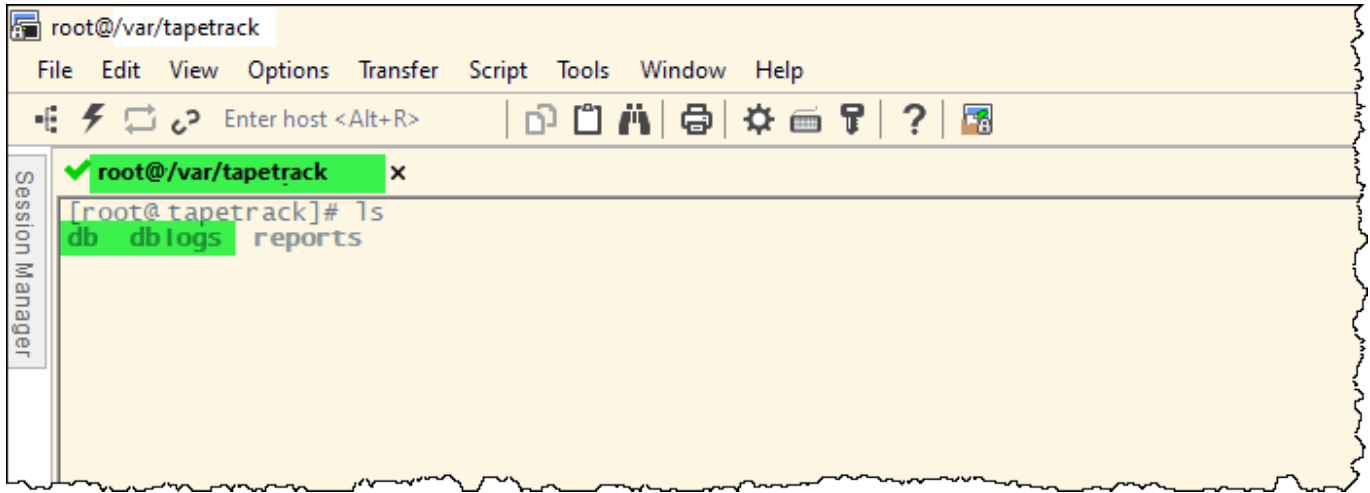
1. /var/db
2. /var/dblogs



Linux

To backup the TapeTrack database you should backup the following folders in the listed sequence:

1. /var/tapetrack/db
2. /var/tapetrack/dblogs



Backup

This backup can be performed using a utility such as tar, or ideally using a backup software agent to ensure that backups are performed regularly and successfully.

From: <https://rtfm.tapetrack.com/> - **TapeTrack Documentation**

Permanent link: <https://rtfm.tapetrack.com/server/backups>

Last update: **2025/01/21 22:07**

