

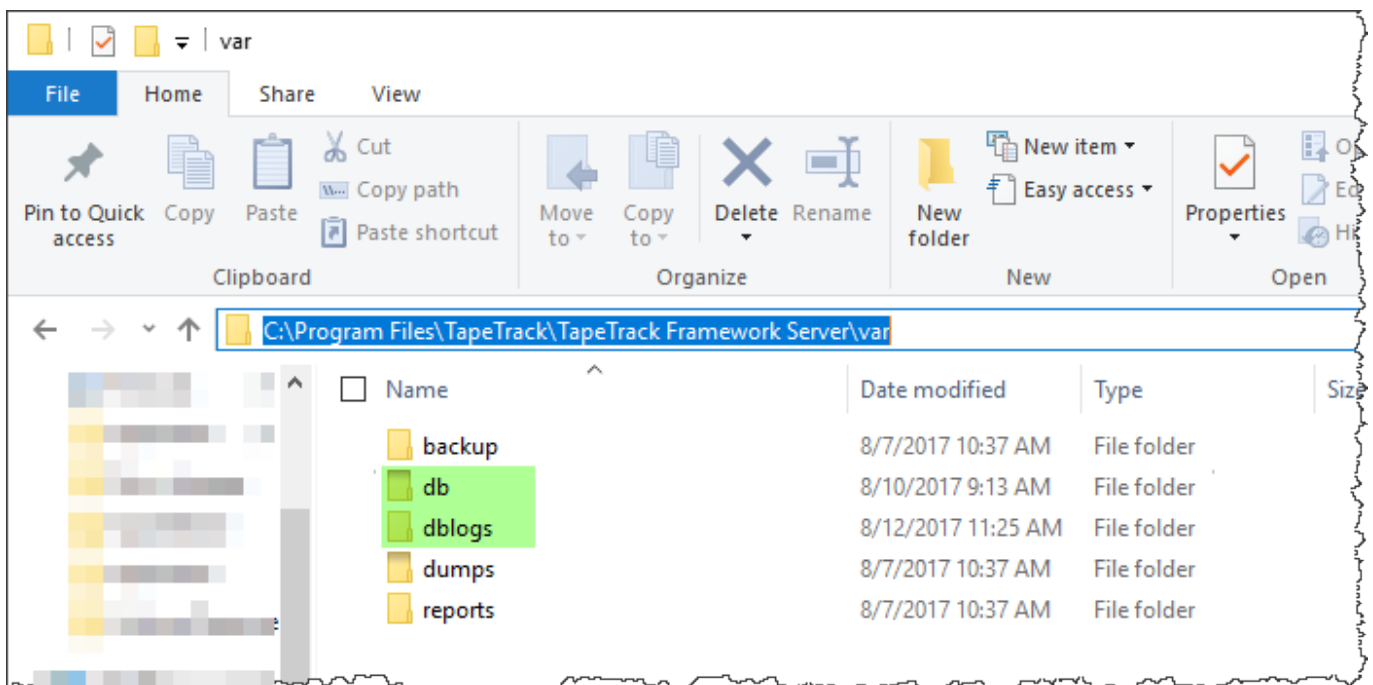
# Backups

It is critical that you regularly backup your TapeTrack Framework Server to enable, should a failure occur, to restore not only the TapeTrack database but quickly identify which Volumes are required for data restoration and their current location.

## Windows

To backup the TapeTrack database you should backup the following folders in the listed sequence:

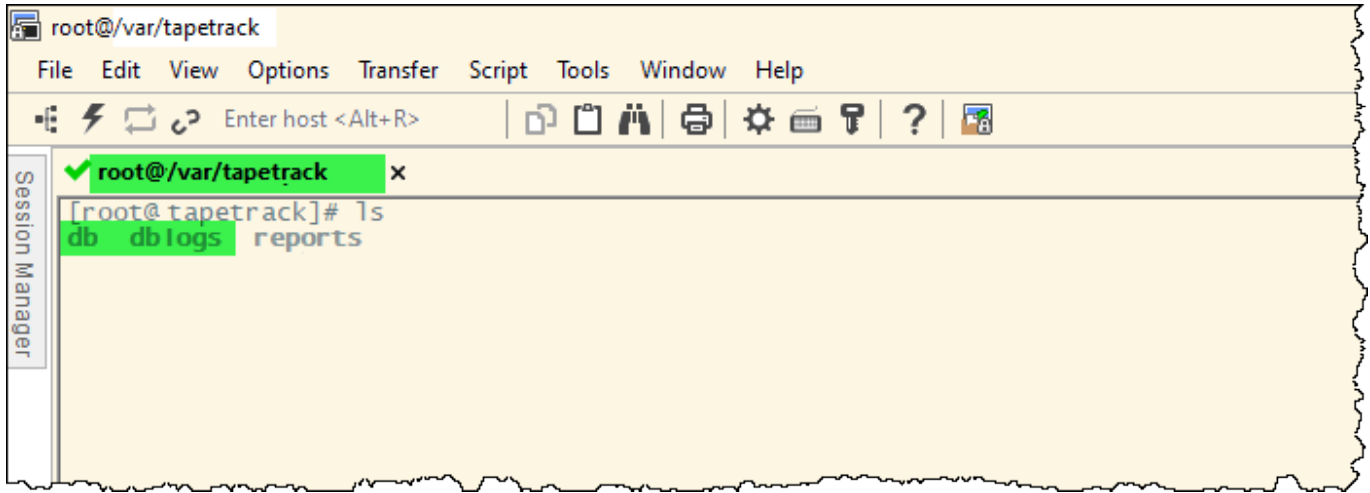
1. /var/db
2. /var/dblogs



## Linux

To backup the TapeTrack database you should backup the following folders in the listed sequence:

1. /var/tapetrack/db
2. /var/tapetrack/dblogs



## Backup

This backup can be performed using a utility such as tar, or ideally using a backup software agent to ensure that backups are performed regularly and successfully.

From: <https://rtfm.tapetrack.com/> - **TapeTrack Documentation**

Permanent link: <https://rtfm.tapetrack.com/server/backups?rev=1589415112>

Last update: **2025/01/21 22:07**

