

Changing the Database Location

The TapeTrack database location can be changed by specifying the `-h` argument when starting TapeTrack.



It is recommended that the TapeTrack database not be stored on an SMB or NFS share.

Changing The Database Location Via The Server Helper

Double click the Server Helper icon, installed on your desktop by default, to start the **Server Helper**.



Alternatively, in your TapeTrack Install directory (`\TapeTrack\TapeTrack Framework Server`), double click the file `TMSS10ServerHelper.exe`.

In the field **Home** insert the fully qualified directory location for the `var/db` directory.

Service	
Name	TMSS10SVC
Status	Running
Process ID	14792
Binary	C:\Program Files\TapeTrack\TapeTrack Framework Server\TMSS10Server.exe

Options	
Home Directory	C:\Program Files (x86)\TapeTrack\var\db
Port	5000
Syslogd Server	
Enable Replication	True

Click **Save Service Settings** to update the server's database location.

Click **Stop** under the **Control Service** until the **Status** reads **Stopped**, and then click **Start** to restart the service using the new settings.

Login to TapeMaster to check the database redirection was successful.

Changing The Database Location Manually In Windows

Editing The Registry

Changes made to the Windows registry happen immediately, and no backup is automatically made. Do not edit the Windows registry unless you are qualified and confident about doing so.



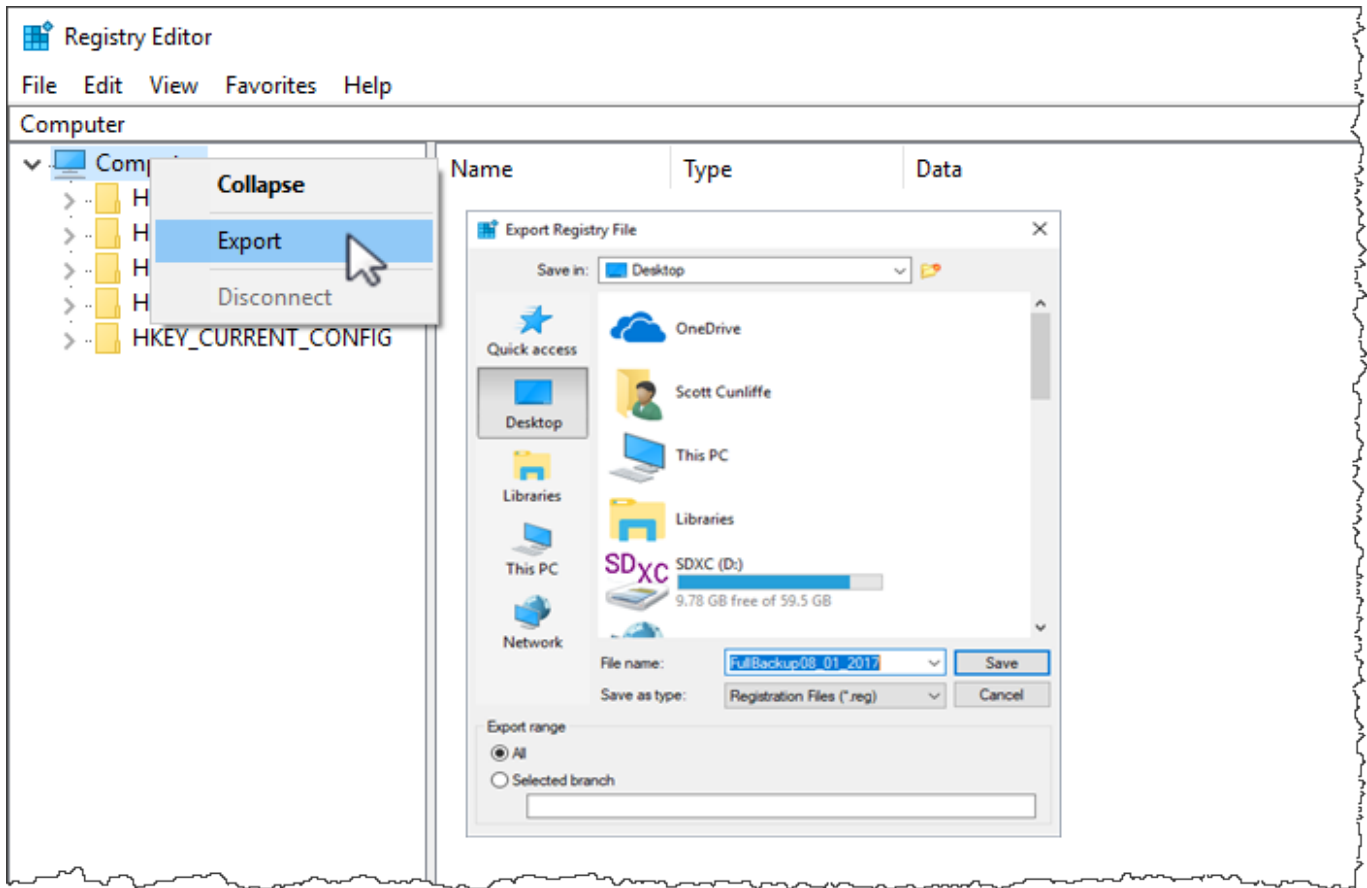
Microsoft have issued the following warning with respect to the Registry Editor:
"Using Registry Editor incorrectly can cause serious, system-wide problems that may require you to re-install Windows to correct them. Microsoft cannot guarantee that any problems resulting from the use of Registry Editor can be solved. Use this tool at your own risk."

Registry Backup



Backup the registry before any making any modifications

Open regedit and create registry backup by right-clicking the top of the registry tree and selecting **Export** and saving to an appropriate location.



2018/04/04 04:14 · Scott Cunliffe
[technote](#), [registry](#)

Open administrative command window and stop the TapeTrack service with the command **net stop TMSS10SVC**.

In regedit, navigate to **HKEY_LOCAL_MACHINE\SYSTEM\ControlSet001\Services\TMSS10SVC**.

Double click on **ImagePath** to open the Edit String window.

Add **-h** argument to end of current String and fully qualified path of db folder.

Click OK and exit out of registry.

In the administrative command window restart the TapeTrack service with the **net start TMSS10SVC**.

Login to TapeMaster to check the database redirection was successful.

From:
<https://rtfm.tapetrack.com/> - **TapeTrack Documentation**

Permanent link:
https://rtfm.tapetrack.com/server/database_location?rev=1615265823

Last update: **2025/01/21 22:07**

