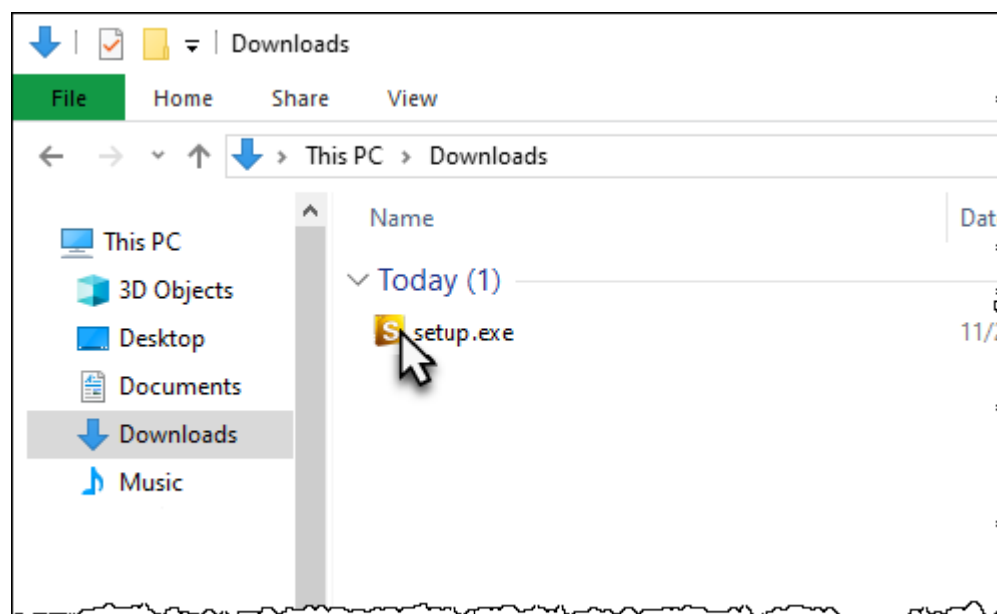


Installing

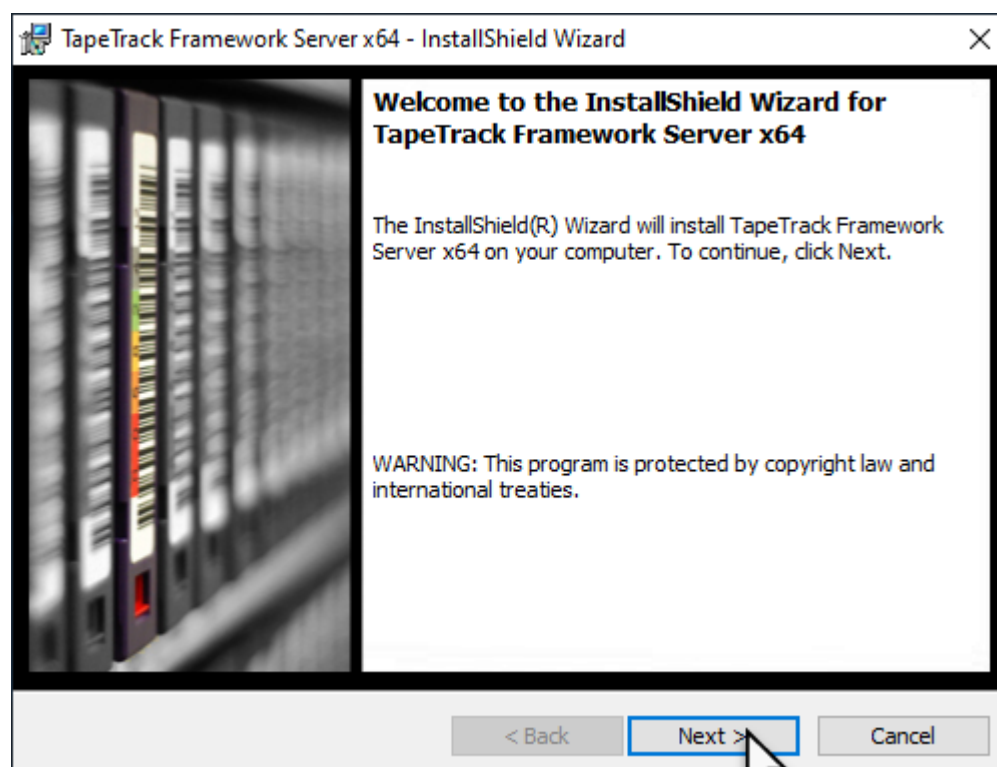
Windows

The TapeTrack Framework Server Software installs automatically via an InstallShield installer.

Locate the executable you downloaded, setup.exe, and double click to initiate the installation.



Click Next > to start the Install Shield Wizard.



After reading and agreeing to the License Agreement click I accept the terms in the

license agreement and Next > to proceed

[image](#)

Confirm the installation directory is correct,
or click Change to select another installation directory. Click Next > to proceed.

[image](#)

Click Install to begin the installation

[image](#)

Click Finish to exit the installer.

At the conclusion of the installation process, the installer will also kick-off an install of the following packages, which can optionally be installed:

1. TapeTrack TapeMaster
2. TapeTrack Server Utilities

Linux

The TapeTrack Framework Server will be installed by the Redhat Package Manager (RPM).

An example installation command is:

Install the Client package (must be installed before the Server package).

```
rpm -i  
http://mirror-us.tapetrack.com/Linux-x86/tapetrack-clients-latest.i386.rpm
```

Install the Server package.

```
rpm -i  
http://mirror-us.tapetrack.com/Linux-x86/tapetrack-server-latest.i386.rpm
```

From:
<https://rtfm.tapetrack.com/> - **TapeTrack Documentation**

Permanent link:
<https://rtfm.tapetrack.com/server/installing?rev=1595308788>

Last update: **2025/01/21 22:07**

